

# SPY

Design by  
Rocco Este

IT Istruzioni di montaggio

EN Assembly instructions

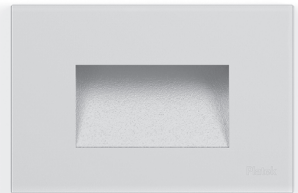
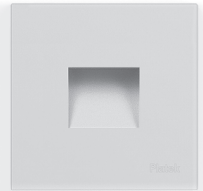
DE Instructions de montage

FR Montageanleitung

ES Instrucciones de montaje

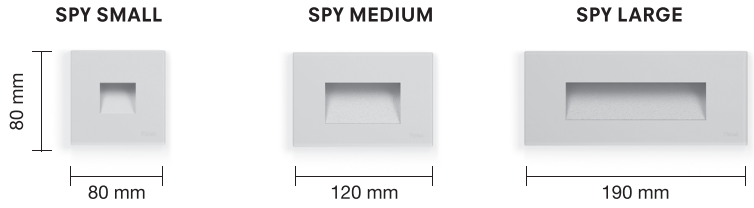


More details at:  
[platek.eu/SPY](https://platek.eu/SPY)



**Platek®**

TECHNICAL DATA



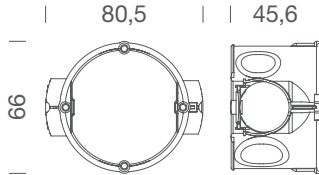
Alimentazione Supply Versorgung Alimentation Suministro	220-240V 50/60Hz	220-240V 50/60Hz	220-240V 50/60Hz
Classe Class Schutzklasse Classe Clase	II □	II □	II □
White LED 230V ASYMM.	2,5W / 250 lm Nominal data	4W / 400 lm Nominal data	5,5W / 550 lm Nominal data
	<b>3,8W / 25 lm Real data</b>	<b>6W / 130 lm Real data</b>	<b>8W / 150 lm Real data</b>
White LED 230V DIFFUSE	2,5W / 250 lm Nominal data	4W / 400 lm Nominal data	5,5W / 550 lm Nominal data
	<b>3,8W / 15 lm Real data</b>	<b>6W / 50 lm Real data</b>	<b>8W / 60 lm Real data</b>
Grado di protezione Protection degree Schutzart Degré de protection Grado de protección	IP 66 - IK 05	IP 66 - IK 05	IP 66 - IK 05
Recessed box for concrete included	<b>89 45 047</b>	<b>89 45 044</b>	<b>89 45 049</b>

RECESSED BOX CONCRETE

Cassaforma per cemento inclusa.  
Recessed box for concrete included.

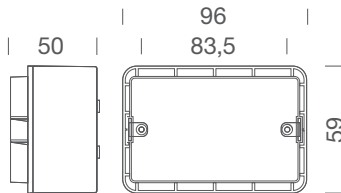
IT	CEMENTO
EN	CONCRETE
DE	ZEMENT/BETON
FR	CIMENT
ES	CEMENTO

SPY SMALL



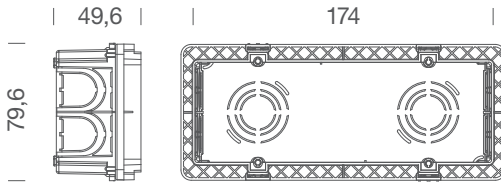
89 45 047

SPY MEDIUM

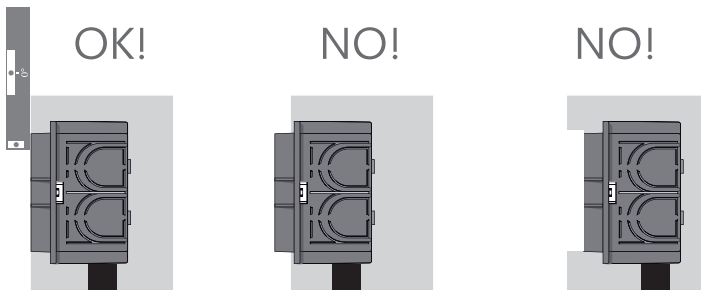


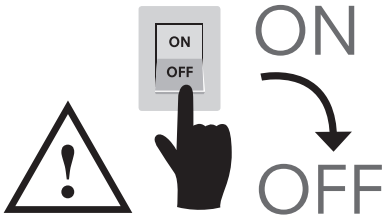
89 45 044

SPY LARGE

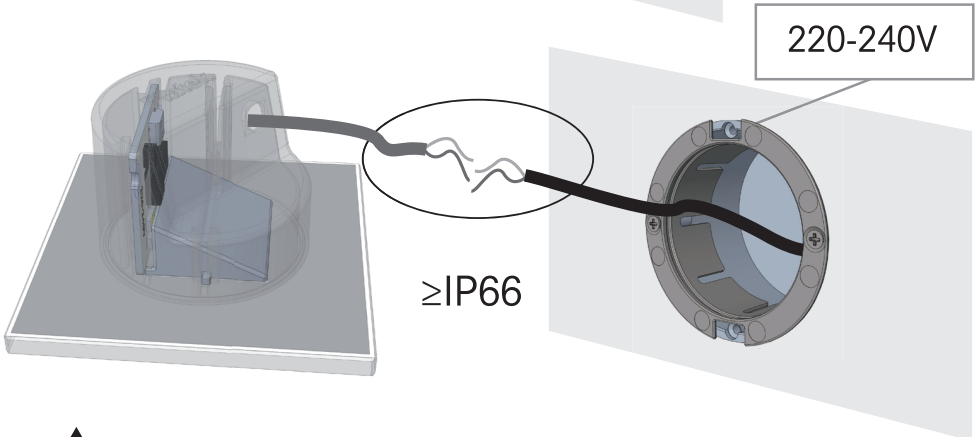
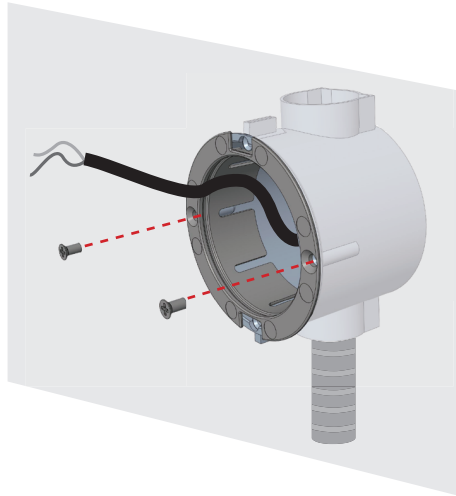


89 45 049





- IT** Collegamento elettrico
- EN** Electric connection
- DE** Elektrischer Anschluss
- FR** Raccordement électrique
- ES** Conexión eléctrica



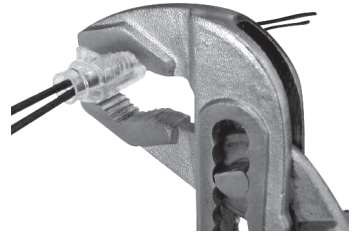
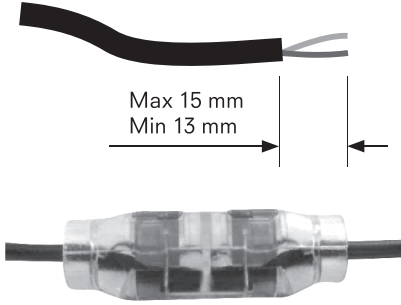
**YES**



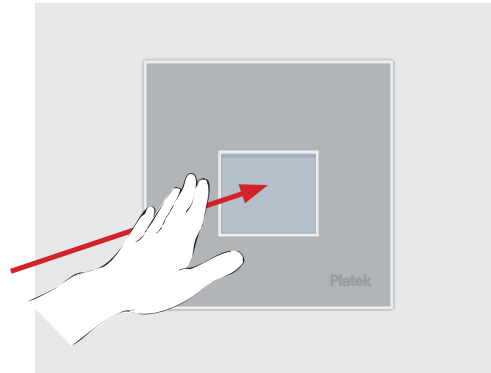
**NO**



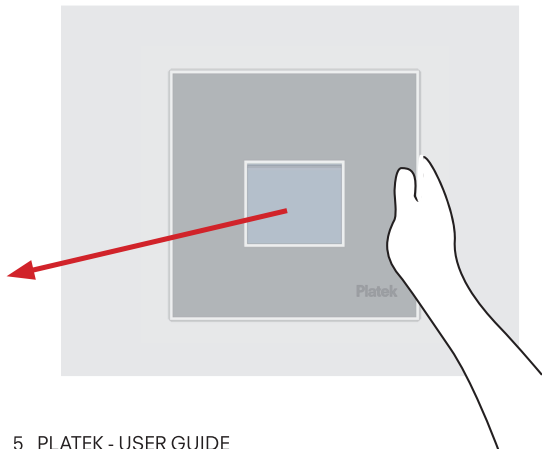
INSTALLATION RECESSED BOX CONCRETE



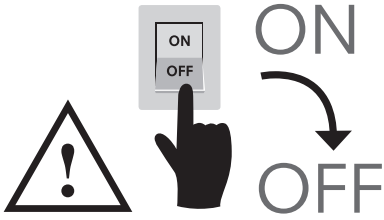
SPY FIX



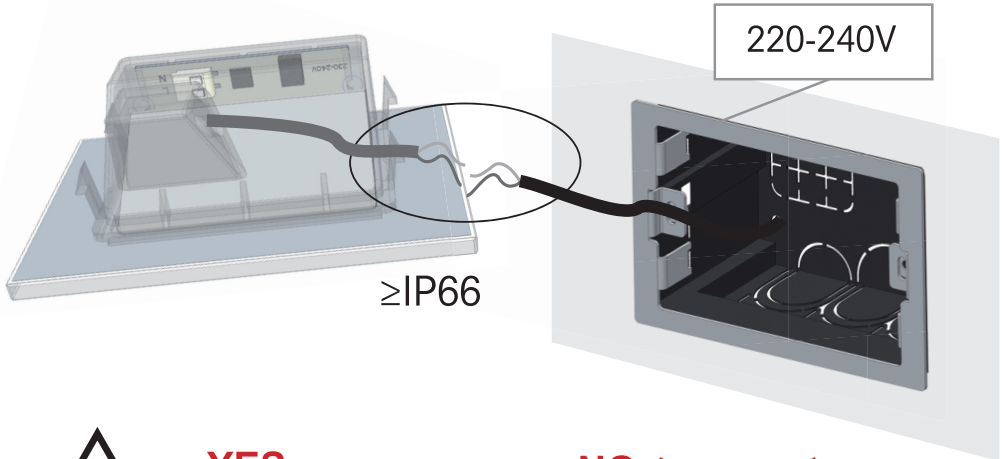
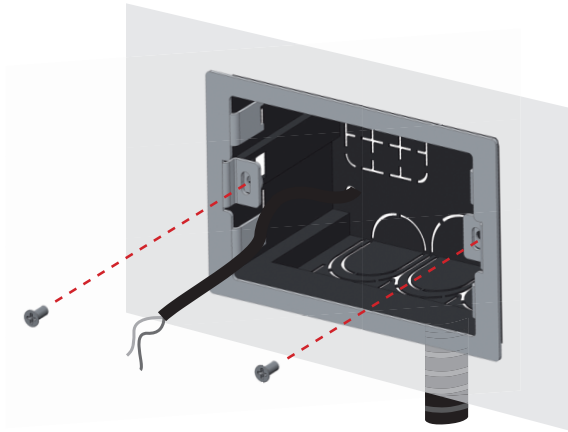
SPY EXTRACT



SPY MEDIUM



- IT** Collegamento elettrico
- EN** Electric connection
- DE** Elektrischer Anschluss
- FR** Raccordement électrique
- ES** Conexión eléctrica



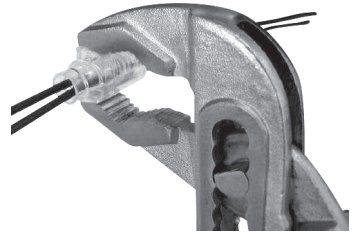
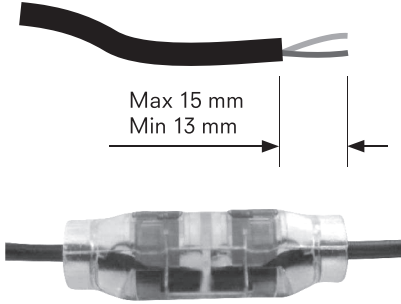
**YES**



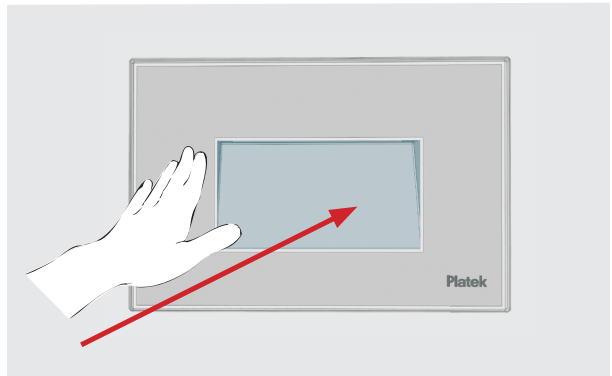
**NO**



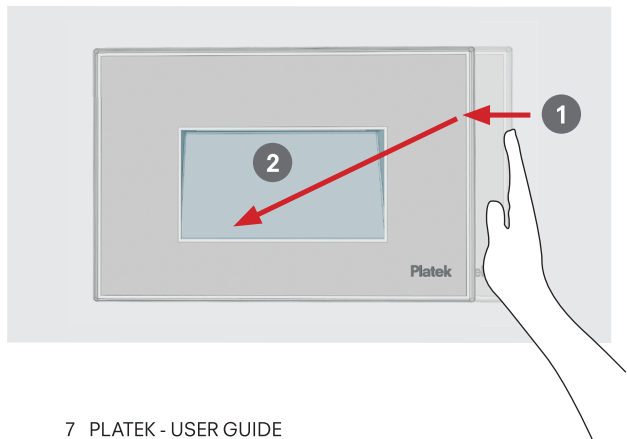
INSTALLATION RECESSED BOX CONCRETE

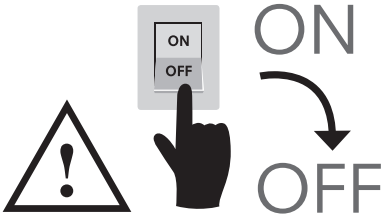


SPY FIX

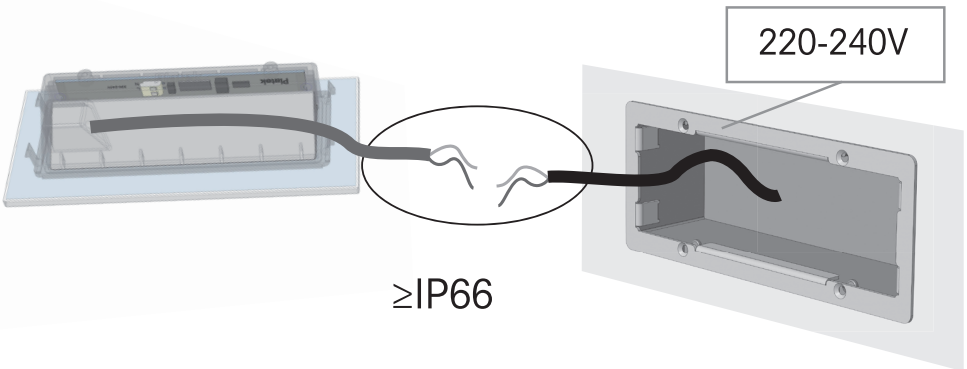
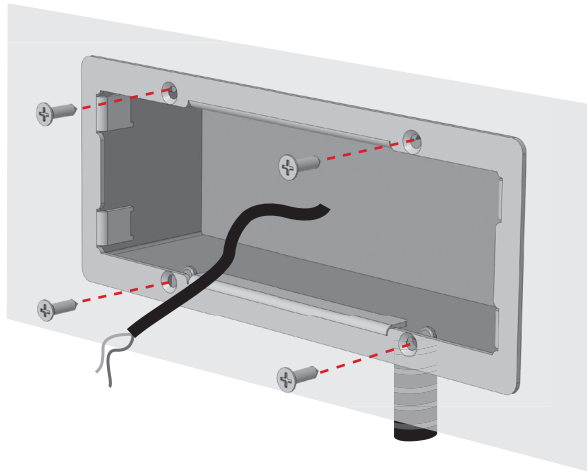
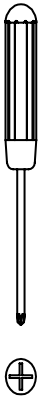


SPY EXTRACT





- IT** Collegamento elettrico
- EN** Electric connection
- DE** Elektrischer Anschluss
- FR** Raccordement électrique
- ES** Conexión eléctrica



**YES**

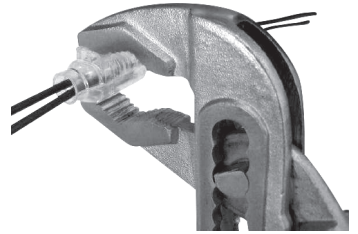
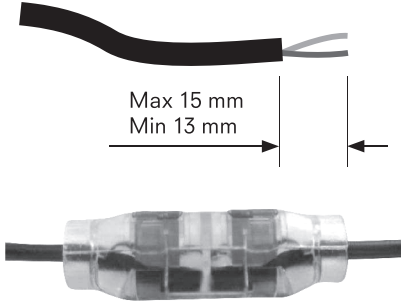


**NO**

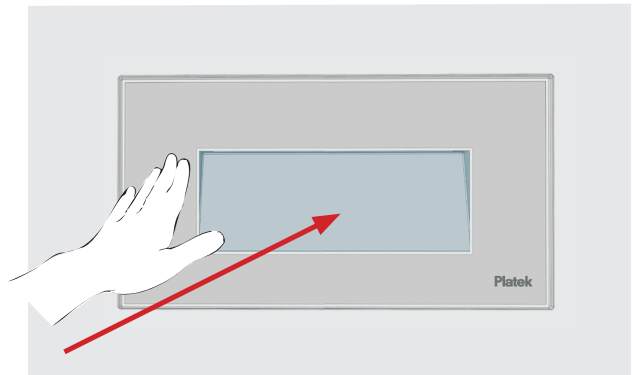




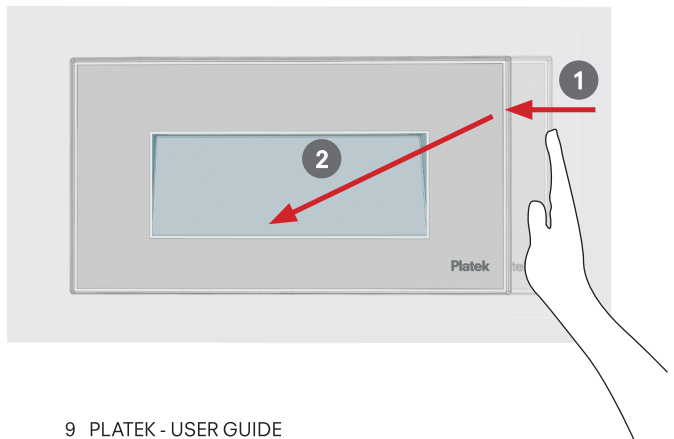
INSTALLATION RECESSED BOX CONCRETE



SPY FIX



SPY EXTRACT



INSTALLATION RECESSED BOX DRYWALL

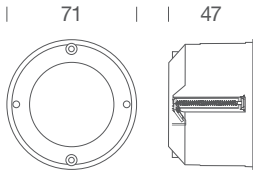
Cassaforma per cartongesso da ordinare separatamente.  
Recessed box drywall to be ordered separately.

IT	CARTONGESSO
EN	PLASTERBOARD
DE	GIPSKARTON
FR	PLAQUES DE PLÂTRE
ES	LAMINAS DE YESO

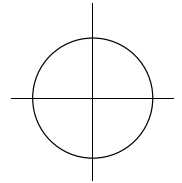
**SPY SMALL**



**89 45 046**



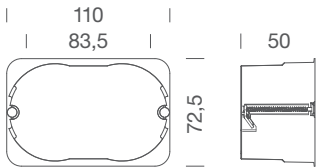
Ø 68



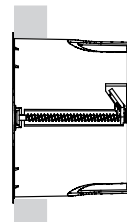
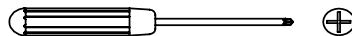
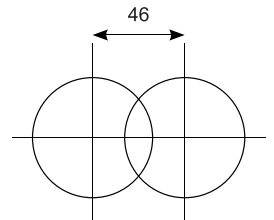
**SPY MEDIUM**



**89 45 045**

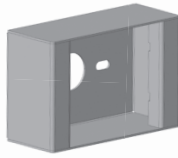


Ø 68

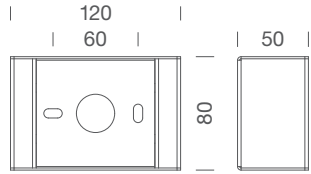


INSTALLATION BOX INSURFACE

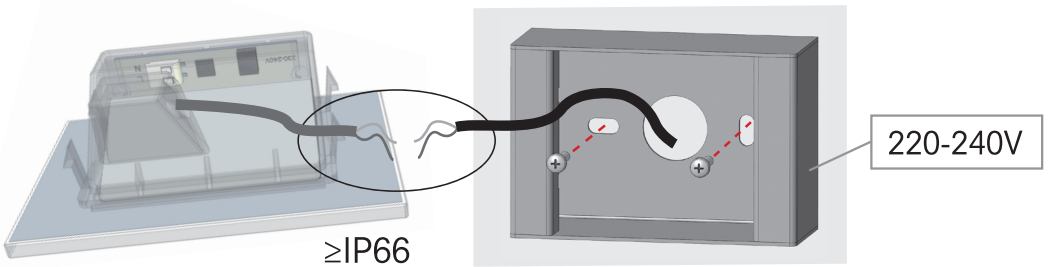
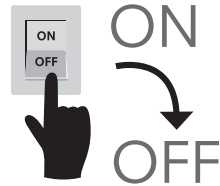
SPY MEDIUM



89 45 042



- IT** Collegamento elettrico
- EN** Electric connection
- DE** Elektrischer Anschluss
- FR** Raccordement électrique
- ES** Conexión eléctrica



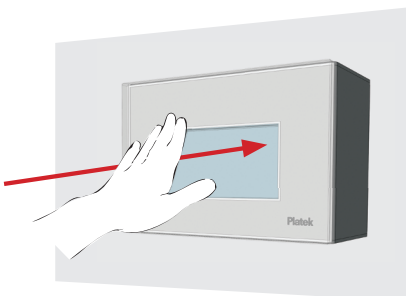
**YES**



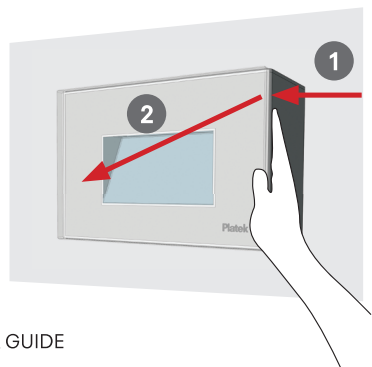
**NO**



SPY FIX



SPY EXTRACT



**IT COME POSSIAMO ESSERE D'AIUTO?**

Ottieni supporto tramite telefono o E-mail, contattandoci al +39 030 68 18 201 o scrivendo all'indirizzo E-mail [supporto@platek.eu](mailto:supporto@platek.eu)

**EN HOW CAN WE HELP YOU?**

Get support by phone or e-mail, call us on +39 030 68 18 201 or send us an email [supporto@platek.eu](mailto:supporto@platek.eu)

**DE WIE KÖNNEN WIR IHNEN HELFEN?**

Sie können unseren Kundendienst per Telefon oder E-Mail erreichen. Kontaktieren Sie uns unter der Telefonnummer +39 030 68 18 201 oder schreiben Sie an folgende E-Mail-Adresse [supporto@platek.eu](mailto:supporto@platek.eu)

**FR COMMENT POUVONS-NOUS VOUS AIDER?**

Vous pouvez obtenir de l'aide par téléphone ou bien par email, en nous contactant +39 030 68 18 201 ou bien en nous écrivant à l'adresse email [supporto@platek.eu](mailto:supporto@platek.eu)

**ES ¿PODEMOS AYUDARTE?**

Solicita soporte a través de nuestro teléfono o email, contactándonos al +39 030 68 18 201 o escribiendo a nuestra dirección de correo electrónico [supporto@platek.eu](mailto:supporto@platek.eu)

PLATEK SRL  
T + 39 030 6818201  
E-MAIL [INFO@PLATEK.EU](mailto:INFO@PLATEK.EU)  
[WWW.PLATEK.EU](http://WWW.PLATEK.EU)

REGISTERED OFFICE:  
VIA PADERNO 19  
25050 RODENGO SAIANO  
(BS) ITALY

HEAD OFFICE:  
VIA MARROCCO 4  
25050 RODENGO SAIANO  
(BS) ITALY



- IT** Conservare le istruzioni.
- EN** Retain the instructions.
- DE** Bewahren Sie die Anleitung.
- FR** Conservez ces instructions.
- ES** Conserve las instrucciones.