

ARTICOLO / Item
Artículo / Article
/ Artikel

900.32

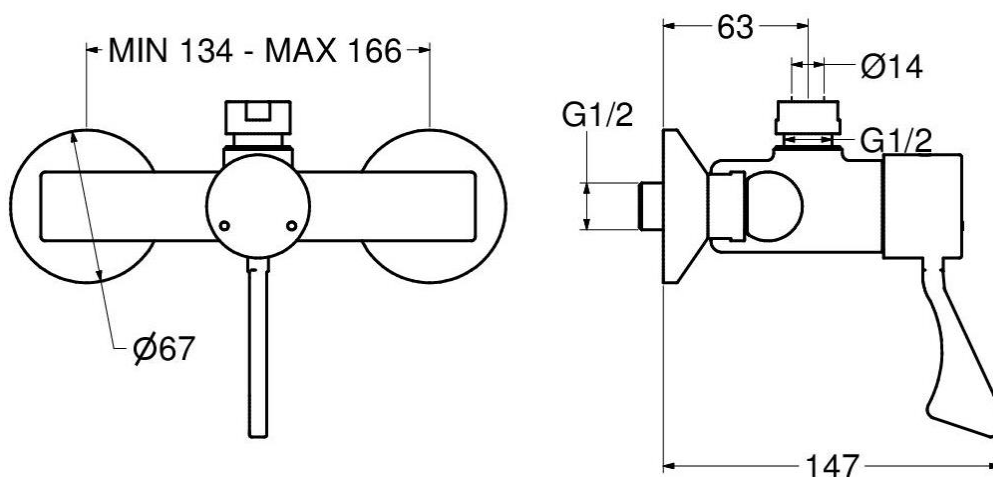
*Miscelatore termostatico progressivo per doccia con
leva clinica.*


*Thermostatic progressive mixer for shower with
clinical lever.*


*Mezclador progresivo termostático para ducha con
palanca medical.*


*Mitigeur progressif thermostatique pour douche à
manette clinique.*


*Thermostatbatterie mit progressivem Mischverhalten
für Dusche, mit Langhebel*



IT 	
COMPOSIZIONE	
<ul style="list-style-type: none"> - Rubinetto in ottone cromato - Cartuccia termostatica progressiva TMV3 - Valvole di ritegno 	
CARATTERISTICHE FUNZIONALI	
Pressione di alimentazione:	Min 1 – max 5 bar
Temperatura alimentazione acqua calda:	50 – 63 °C (55 – 60 °C raccomandata)
Temperatura alimentazione acqua fredda:	5 – 20 °C
Temperatura minima differenziale (calda-miscelata):	10 °C
Campo di regolazione:	15 – MAX °C
Tolleranza di regolazione:	± 2 °C
Temperatura massima selezionabile (taratura di fabbrica):	41 ± 1 °C, regolabile

EN 	
COMPOSITION	
<ul style="list-style-type: none"> - Chromed brass tap - TMV3 thermostatic progressive cartridge - Non-return valves 	
OPERATING CHARACTERISTICS	
Operating pressure:	Min 1 – max 5 bar
Hot water inlet temperature:	50 – 63 °C (55 – 60 °C recommended)
Cold water inlet temperature:	5 – 20 °C
Minimum differential temperature (hot-mixed):	10 °C
Outlet water temperature range:	15 – MAX °C
Setting tolerance:	± 2 °C
Maximum temperature (factory setting):	41 ± 1 °C, adjustable

ES 	
COMPOSICIÓN	
<ul style="list-style-type: none"> - Grifo en latón cromado - Cartucho termostático progresivo TMV3 - Válvulas de retención 	
CARACTERÍSTICAS FUNCIONALES	
Presión de alimentación:	Min 1 – max 5 bar
Temperatura de alimentación agua caliente:	50 – 63 °C (55 – 60 °C recomendada)
Temperatura de alimentación agua fría:	5 – 20 °C
Temperatura mínima diferencial (caliente-mixta):	10 °C
Campo de regulación:	15 – MAX °C
Tolerancia de regulación:	± 2 °C

FR 	
COMPOSITION	
<ul style="list-style-type: none"> - Robinet en laiton chromé - Cartouche progressif thermostatique TMV3 - Clapets anti-retour 	
CARACTÉRISTIQUES FONCTIONNELLES	
Pression d'alimentation:	Min 1 – max 5 bar
Température entrée eau chaude:	50 – 63 °C (55 – 60 °C recommandé)
Température entrée eau froide:	5 – 20 °C
Température différentielle minimum (chaud-mixte):	10 °C
Plage de réglage température:	15 – MAX °C
Tolérance de régulation:	± 2 °C

Temperatura máxima 41 ± 1 °C, ajustable
(calibración de fábrica):

Température maximale 41 ± 1 °C, réglable
(calibration d'usine):

DE



LIEFERUMFANG

- Körper aus verchromten Messing
- Progressive Thermostatkartusche TMV3
- Rückschlagventile

FUNKTIONELLE EIGENSCHAFTEN

Zulaufdruck: Min 1 – max 5 bar

Warmwassertemperatur: 50 – 63 °C
(55 – 60 °C
empfohlen)

Kaltwassertemperatur: 5 – 20 °C

Mindesttemperaturunterschied 10 °C
(Warm- und Mischwasser):

Einstellbereich: 15 – MAX °C

Einstelltoleranz: ± 2 °C

Höchstauswählbare Temperatur 41 ± 1 °C,
(Werkseinstellung) einstellbar