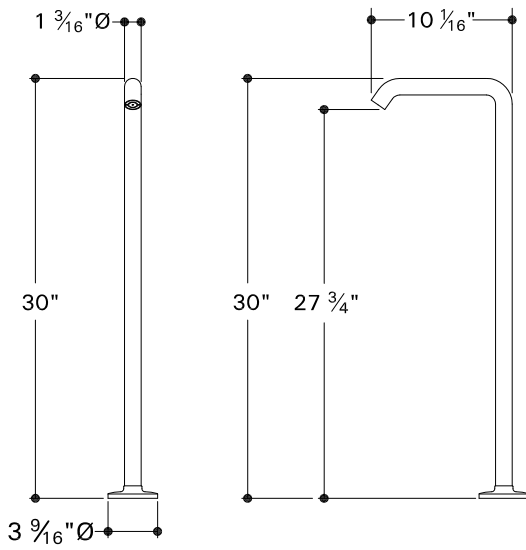
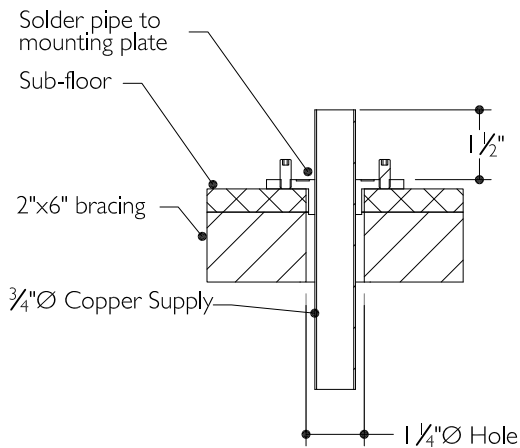


PTTU28



- Check tub filler dimensions to assure the spout projects far enough into the tub.
- The spout can not be cut to adjust height.
- Refer to the specification and assembly drawings attached. This product is sold partially assembled but shown fully disassembled for illustrative and service purposes only.
- Inspect this product to assure you have all parts required for proper installation.
- Use only a strap wrench or protected/smooth-jaw wrench on any finished surface.
- Install accessible hot and cold service stop valves to facilitate servicing.

FIGURE 1



ROUGH-IN:

1. Run well supported 3/4" hot and cold copper supply lines for maximum water flow then install a wall valve (sold separately) for each supply line.
2. Run both supply lines into a copper tee.

INSTALLATION IN WOOD:

(for concrete skip to step 8)

Refer to Figure 1 and 2 for steps 3-7

3. Determine the location where the spout supply line will come up through the floor and install a piece of 2x6 on its side between joists to serve as 6" blocking surface for securing the spout assembly to the floor.
4. Drill a 1 1/4" diameter hole through the 2x6 blocking and sub floor for the 3/4" supply line to pass through.
5. Run the 3/4" copper supply line up through the hole in the floor.
6. Slide the floor mounting flange (9) over the copper and position the flange in the proper location. Proper location is determined by drawing an imaginary line between 2 wood screw holes or 2 thread studs as shown in Figure 2. This imaginary line should be perpendicular to the spout to assure the spout is positioned properly and projects far enough into the tub.

IMPORTANT

- To ensure this product is installed properly, you must read and follow these guidelines.
- The owner/user of this product must keep this information for future reference.
- Be sure your installation conforms to local codes. Anti scald protection is the responsibility of the installer and according to applicable codes.
- This tub filler should be on-site prior to rough in and allows the installer to visualize the installation.

FIGURE 2- MOUNTING PLATE ALIGNMENT

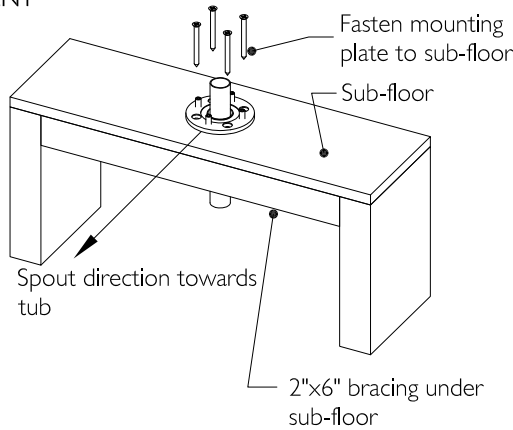
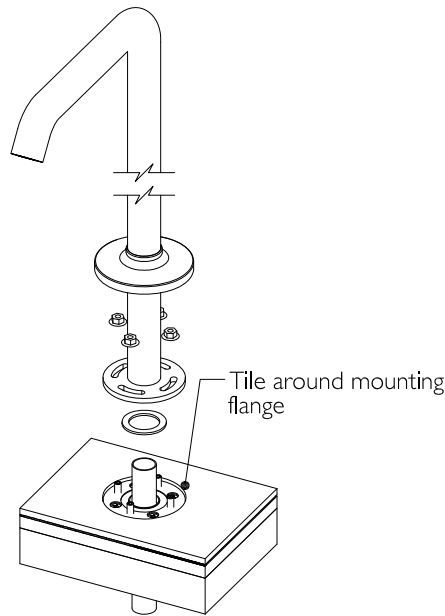


FIGURE 3



7. Screw the floor mounting flange (9) to the floor using the 4 - 2 inch screws (8) provided. Cut the copper supply so that it extends 1 1/2" above the flange then solder the ID of flange to the copper supply line as shown in Figure 1.

INSTALLATION IN CONCRETE:

(for wood skip to step 13)

Refer to figure 1 and 2 for steps 8-12

8. Make sure you have an area of concrete free from rebar or post-tension cables. Drill a 1 1/4" diameter hole through the concrete. This hole must be perfectly vertical to ensure the spout will install properly.

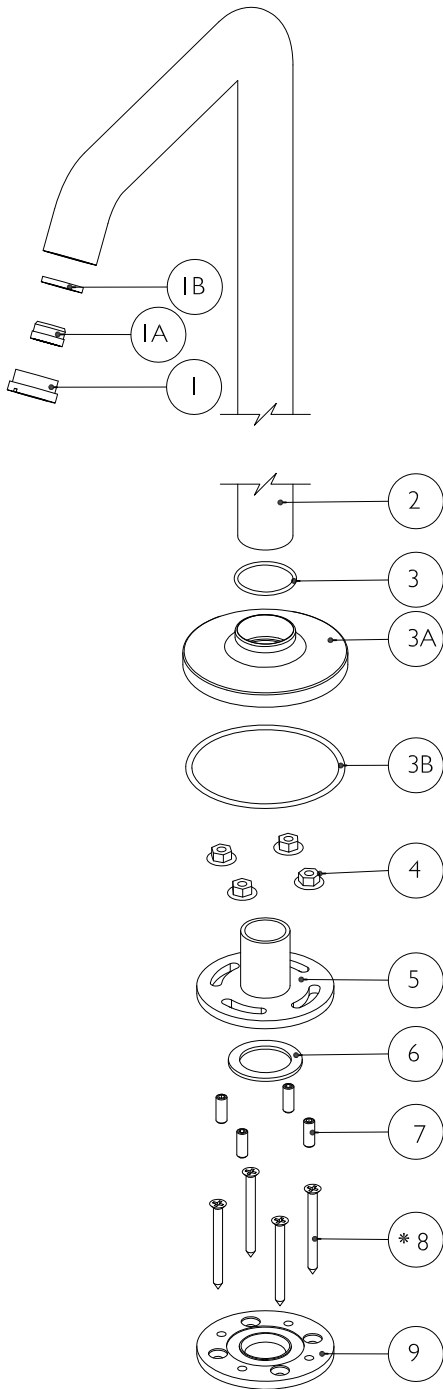
9. Run the 3/4" copper supply line up through the hole in the floor.
10. Slide the floor mounting flange (9) over the copper and position the flange in the proper orientation. Proper orientation is determined by drawing an imaginary line between two thread stud holes as shown in Figure 2. This imaginary line should be perpendicular to the spout to assure the spout is positioned properly and projects far enough into the tub.
11. Screw the floor mounting flange (9) to the floor using four Tapcon 3/16" x 1 3/4" phillips flat head blue concrete screws (not included). It is important that these screws have flat heads so the mating flanges (5 and 9) sit flat against each other. **DO NOT** use the four wood screws provided in concrete.
12. Cut the copper supply so that it extends 1 1/2" above the flange, then solder the ID of the flange to the copper supply line as shown in Figure 1.

SPOUT INSTALLATION:

Refer to Figure 3 for steps 13-20

- 13. **IMPORTANT** - tile up to the floor mounting flange (9). **DO NOT TILE OVER THE FLANGE.**
- 14. Thread the 4 studs (7) into the floor mounting flange then place the rubber flange washer (6) onto the flange.
- 15. Slide the escutcheon assembly (3-3b) up the spout then place the spout assembly onto the floor mounting flange.
- 16. Thread a nut (4) partially onto each stud (7) then rotate the spout to the proper position. Note that the spout has 45 degrees of rotational adjustment if the floor mounting flange is positioned properly as described in step 6.
- 17. Verify the rubber flange washer (6) is positioned properly on the flange then tighten the 4 nuts to secure the spout to the floor.
- 18. Slide the escutcheon assembly down onto the floor.
- 19. Remove the aerator assembly (1-1b) using the tool provided.
- 20. Turn the supplies on, check for leaks and verify proper function. Reinstall the aerator assembly.

If further assistance is required, please contact
 ➤ Product Support at 1-800-927-2120 (8am-7pm EST).



PARTS TABLE		
ITEM NO.	DESCRIPTION	QTY.
1	HOUSING	1
1A	FLOW STRAIGHTENER	1
1B	HOUSING WASHER	1
2	FLOOR MOUNTED TUB SPOUT	1
3	O-RING	1
3A	ESCUTCHEON	1
3B	RUBBER O-RING	1
4	10MM FLANGE NUT	4
5	SPOUT FLANGE	1
6	RUBBER FLANGE WASHER	1
7	3MM HEX ALLEN STUD	4
* 8	2" WOOD SCREW	4
9	FLOOR MOUNTING FLANGE	1

* Use for wood sub-floor application only.

- For concrete flooring use Tapcon screws (not provided)