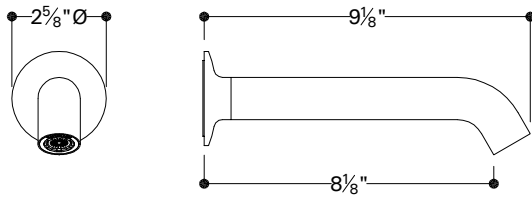
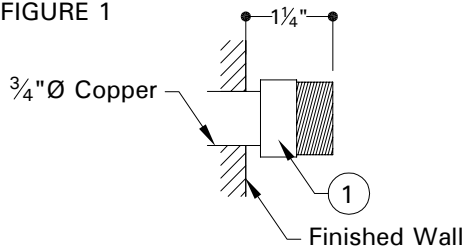


PTTU82**FIGURE 1****IMPORTANT**

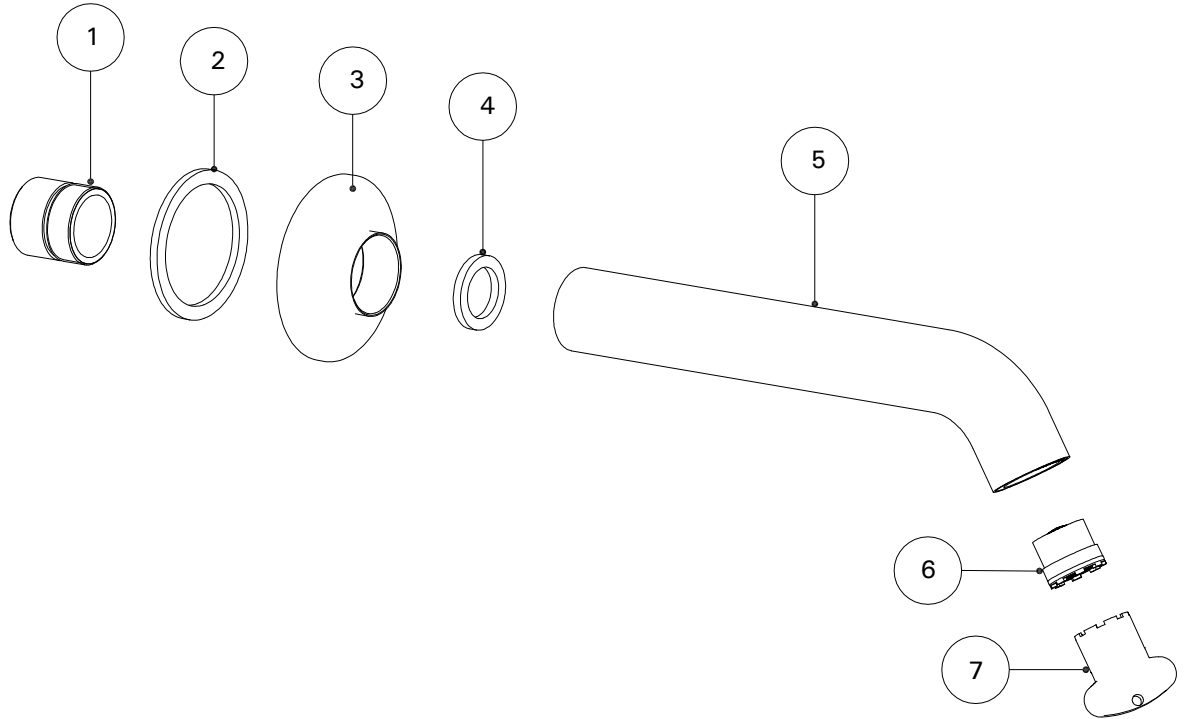
- To ensure this product is installed properly, you must read and follow these guidelines.
- The owner/user of this product must keep this information for future reference.
- Be sure your installation conforms to local codes.
- This product must be installed by a professional contractor.
- Inspect this product to assure you have all parts required for proper installation.
- Use only a strap wrench or protected/smooth-jaw wrench on any finished surface

INSTALLATION:

1. Install $\frac{3}{4}$ " supplies for optimum flow and stub-out a section of $\frac{3}{4}$ " copper.
2. After the finished wall is complete, cut the copper so it protrudes $\frac{3}{4}$ " from the surface of the finished wall.
3. Unpack the spout and verify the spout adapter (1) is threaded completely into the spout.
4. To verify alignment of the spout and adapter, make a mark at 12:00 that extends from the spout onto the adapter.
5. Unthread the adapter from the spout then slide the adapter onto the copper.

6. The face of the adapter (1) requires being $\frac{1}{4}$ " from the finished wall, see figure 1.
7. After verifying fit, make sure the mark made in step 4 remains at 12:00 then sweat the spout adapter (1) onto the copper. If it is not aligned, the spout will not thread on completely and cause a leak or not align properly so the tip points down at 6:00.
8. Allow the adapter to cool then slide the escutcheon (3) onto the adapter.
9. Thread the spout onto the adapter making sure the washer (4) is in place.
10. Remove aerator using tool provided.
11. Turn on the supplies to check leaks and verify proper function.
12. Reinstall aerator.

If further assistance is required, please contact Product Support at 1-800-927-2120 (8am-7pm EST).



PARTS TABLE

ITEM NO.	DESCRIPTION	QTY.
1	SPOUT ADAPTER	1
2	ESCUTCHEON GASKET	1
3	ESCUTCHEON	1
4	WASHER	1
5	SPOUT	1
6	AERATOR	1
7	AERATOR TOOL	1

These guidelines have been prepared for the professional contractor to aid in the installation of: **.25 WALL MOUNTED TUB SPOUT (PTTU82)** All dimensions are based on origin specification and are subject to change and variation. Please consult your Design Associate for current specifications.

W A T E R W O R K S