

Con le sue sei colonne Tesi6 è la versione della gamma Tesi che fornisce il maggior apporto calorico. I Termoarredatori Tesi rappresentano il sistema più funzionale, modulare ed elegante per il riscaldamento di tutti gli ambienti anche di grandi dimensioni. Tesi6 ha una profondità di 215 mm e altezze da 200 ai 2500 mm.



Tesi 6, 40 elementi, altezza 600 mm, larghezza 1800 mm, Bianco Standard

Caratteristiche costruttive

tubi in lamiera d'acciaio di diametro 25 mm
collettori in lamiera d'acciaio stampati
larghezza elementi 45 mm (passo del singolo elemento)
filettature estremità collettore sup. e inf. 1"1/4 G dx o sx
pressione di esercizio massima ammessa 8 bar
temperatura di esercizio massima ammessa 95°C
lunghezza radiatore con tappi montati: (N° elem. x 45) + 24 mm
misura dell'interasse valvola Irsap pari a 41÷44 mm
misura dell'interasse detentore Irsap pari a 41÷44 mm

Certificazioni



Plus



Dati tecnici

| Modello | Profondità (mm) | Altezza (mm) | Interasse (mm) | Peso (kg) | Capacità (lt) | $\Delta t=50^{\circ}\text{C}$ (kcal/h) | $\Delta t=50^{\circ}\text{C}$ (Watt) | $\Delta t=40^{\circ}\text{C}$ (Watt) | $\Delta t=30^{\circ}\text{C}$ (Watt) | $\Delta t=20^{\circ}\text{C}$ (Watt) | Esponente |
|---------|-----------------|--------------|----------------|-----------|---------------|--|--------------------------------------|--------------------------------------|--------------------------------------|--------------------------------------|-----------|
| 200 | 215,0 | 200 | 127 | 0,97 | 0,86 | 32,1 | 37,4 | 27,5 | 18,5 | 10,6 | 1,374 |
| 300 | 215,0 | 300 | 235 | 1,35 | 1,13 | 52,2 | 60,7 | 45,5 | 31,4 | 18,6 | 1,293 |
| 400 | 215,0 | 400 | 335 | 1,71 | 1,38 | 67,5 | 78,5 | 58,6 | 40,2 | 23,6 | 1,310 |
| 500 | 215,0 | 500 | 435 | 2,06 | 1,63 | 82,4 | 95,8 | 71,2 | 48,6 | 28,4 | 1,327 |
| 565 | 215,0 | 565 | 500 | 2,30 | 1,79 | 91,9 | 106,9 | 79,3 | 54,0 | 31,4 | 1,339 |
| 600 | 215,0 | 600 | 535 | 2,42 | 1,88 | 97,0 | 112,8 | 83,6 | 56,8 | 32,9 | 1,345 |
| 665 | 215,0 | 665 | 600 | 2,65 | 2,04 | 106,4 | 123,7 | 91,4 | 61,9 | 35,7 | 1,356 |
| 685 | 215,0 | 685 | 620 | 2,72 | 2,09 | 109,3 | 127,1 | 93,8 | 63,5 | 36,6 | 1,359 |
| 750 | 215,0 | 750 | 685 | 2,95 | 2,25 | 118,6 | 137,9 | 101,6 | 68,5 | 39,3 | 1,370 |
| 765 | 215,0 | 765 | 700 | 3,00 | 2,29 | 120,7 | 140,4 | 103,3 | 69,6 | 39,9 | 1,373 |
| 865 | 215,0 | 865 | 800 | 3,36 | 2,54 | 134,9 | 156,9 | 115,0 | 77,1 | 43,9 | 1,390 |
| 885 | 215,0 | 885 | 820 | 3,43 | 2,59 | 137,7 | 160,2 | 117,4 | 78,6 | 44,7 | 1,394 |
| 900 | 215,0 | 900 | 835 | 3,48 | 2,62 | 139,8 | 162,6 | 119,1 | 79,7 | 45,2 | 1,396 |
| 1000 | 215,0 | 1000 | 935 | 3,84 | 2,87 | 153,9 | 178,9 | 131,3 | 88,1 | 50,2 | 1,388 |
| 1200 | 215,0 | 1200 | 1135 | 4,89 | 3,33 | 181,6 | 211,2 | 155,5 | 104,8 | 60,1 | 1,371 |
| 1500 | 215,0 | 1500 | 1435 | 6,06 | 4,06 | 222,8 | 259,1 | 191,9 | 130,3 | 75,5 | 1,346 |
| 1800 | 215,0 | 1800 | 1735 | 7,22 | 4,80 | 263,6 | 306,5 | 227,6 | 155,1 | 90,3 | 1,334 |
| 2000 | 215,0 | 2000 | 1935 | 8,00 | 5,29 | 290,6 | 337,9 | 251,1 | 171,3 | 99,9 | 1,330 |
| 2200 | 215,0 | 2200 | 2135 | 8,78 | 5,78 | 317,6 | 369,3 | 274,6 | 187,5 | 109,5 | 1,327 |
| 2500 | 215,0 | 2500 | 2435 | 9,94 | 6,51 | 357,9 | 416,2 | 309,9 | 211,9 | 124,0 | 1,322 |

Grazie alle elevate prestazioni dei radiatori Tesi6, il Δt ideale per la progettazione a bassa temperatura è 30°C

Per Δt diversi da 50°C utilizzare la formula: $Q=Q_n (\Delta t / 50)^n$

A partire dalle vendite dell'anno 2010, tutta la gamma dei radiatori TESI è garantita 10 anni.

Rese a batteria

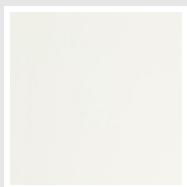
| Lunghezza (mm) | N° Elementi | 200 | 300 | 400 | 500 | 565 | 600 | 665 | 685 | 750 | 765 | 865 | 885 | 900 | 1000 | 1200 | 1500 | 1800 | 2000 | 2200 | 2500 |
|----------------|-------------|-------------|------|------|------|------|------|------|------|------|------|------|------|------|------|------|------|------|------|------|------|
| 90 | 2 | <i>Watt</i> | | | | | | | | | | | | | | | | | | | |
| | | = 75 | 121 | 157 | 192 | 214 | 226 | 247 | 254 | 276 | 281 | 314 | 320 | 325 | 358 | 422 | 518 | 613 | 676 | 739 | 832 |
| 135 | 3 | <i>Watt</i> | | | | | | | | | | | | | | | | | | | |
| | | = 112 | 182 | 235 | 287 | 321 | 338 | 371 | 381 | 414 | 421 | 471 | 480 | 488 | 537 | 634 | 777 | 919 | 1014 | 1108 | 1249 |
| 180 | 4 | <i>Watt</i> | | | | | | | | | | | | | | | | | | | |
| | | = 149 | 243 | 314 | 383 | 428 | 451 | 495 | 508 | 552 | 562 | 628 | 641 | 650 | 716 | 845 | 1036 | 1226 | 1352 | 1477 | 1665 |
| 225 | 5 | <i>Watt</i> | | | | | | | | | | | | | | | | | | | |
| | | = 187 | 304 | 392 | 479 | 534 | 564 | 619 | 635 | 690 | 702 | 784 | 801 | 813 | 895 | 1056 | 1295 | 1532 | 1690 | 1846 | 2081 |
| 270 | 6 | <i>Watt</i> | | | | | | | | | | | | | | | | | | | |
| | | = 224 | 364 | 471 | 575 | 641 | 677 | 742 | 763 | 827 | 842 | 941 | 961 | 976 | 1074 | 1267 | 1554 | 1839 | 2027 | 2216 | 2497 |
| 315 | 7 | <i>Watt</i> | | | | | | | | | | | | | | | | | | | |
| | | = 262 | 425 | 549 | 671 | 748 | 790 | 866 | 890 | 965 | 983 | 1098 | 1121 | 1138 | 1252 | 1478 | 1813 | 2145 | 2365 | 2585 | 2913 |
| 360 | 8 | <i>Watt</i> | | | | | | | | | | | | | | | | | | | |
| | | = 299 | 486 | 628 | 766 | 855 | 902 | 990 | 1017 | 1103 | 1123 | 1255 | 1281 | 1301 | 1431 | 1690 | 2073 | 2452 | 2703 | 2954 | 3330 |
| 405 | 9 | <i>Watt</i> | | | | | | | | | | | | | | | | | | | |
| | | = 336 | 546 | 706 | 862 | 962 | 1015 | 1114 | 1144 | 1241 | 1264 | 1412 | 1441 | 1464 | 1610 | 1901 | 2332 | 2758 | 3041 | 3323 | 3746 |
| 450 | 10 | <i>Watt</i> | | | | | | | | | | | | | | | | | | | |
| | | = 374 | 607 | 785 | 958 | 1069 | 1128 | 1237 | 1271 | 1379 | 1404 | 1569 | 1602 | 1626 | 1789 | 2112 | 2591 | 3065 | 3379 | 3693 | 4162 |
| 495 | 11 | <i>Watt</i> | | | | | | | | | | | | | | | | | | | |
| | | = 411 | 668 | 863 | 1054 | 1176 | 1241 | 1361 | 1398 | 1517 | 1544 | 1726 | 1762 | 1789 | 1968 | 2323 | 2850 | 3371 | 3717 | 4062 | 4578 |
| 540 | 12 | <i>Watt</i> | | | | | | | | | | | | | | | | | | | |
| | | = 448 | 729 | 942 | 1149 | 1283 | 1354 | 1485 | 1525 | 1655 | 1685 | 1883 | 1922 | 1951 | 2147 | 2535 | 3109 | 3678 | 4055 | 4431 | 4994 |
| 585 | 13 | <i>Watt</i> | | | | | | | | | | | | | | | | | | | |
| | | = 486 | 789 | 1020 | 1245 | 1389 | 1467 | 1609 | 1652 | 1793 | 1825 | 2039 | 2082 | 2114 | 2326 | 2746 | 3368 | 3984 | 4393 | | |
| 630 | 14 | <i>Watt</i> | | | | | | | | | | | | | | | | | | | |
| | | = 523 | 850 | 1098 | 1341 | 1496 | 1579 | 1732 | 1779 | 1931 | 1966 | 2196 | 2242 | 2277 | 2505 | 2957 | 3627 | 4291 | 4731 | | |
| 675 | 15 | <i>Watt</i> | | | | | | | | | | | | | | | | | | | |
| | | = 561 | 911 | 1177 | 1437 | 1603 | 1692 | 1856 | 1906 | 2069 | 2106 | 2353 | 2402 | 2439 | 2684 | 3168 | 3886 | 4597 | 5069 | | |
| 720 | 16 | <i>Watt</i> | | | | | | | | | | | | | | | | | | | |
| | | = 598 | 971 | 1255 | 1533 | 1710 | 1805 | 1980 | 2033 | 2207 | 2246 | 2510 | 2563 | 2602 | 2863 | | | | | | |
| 765 | 17 | <i>Watt</i> | | | | | | | | | | | | | | | | | | | |
| | | = 635 | 1032 | 1334 | 1628 | 1817 | 1918 | 2104 | 2161 | 2344 | 2387 | 2667 | 2723 | 2765 | 3042 | | | | | | |

| Lunghezza (mm) | N° Elementi | 200 | 300 | 400 | 500 | 565 | 600 | 665 | 685 | 750 | 765 | 865 | 885 | 900 | 1000 | 1200 | 1500 | 1800 | 2000 | 2200 | 2500 |
|----------------|-------------|---|-----|-----|-----|-----|-----|-----|-----|-----|-----|-----|-----|-----|------|------|------|------|------|------|------|
| 810 | 18 | <i>Watt</i> = 673 1093 1412 1724 1924 2031 2227 2288 2482 2527 2824 2883 2927 3221 <i>W =</i> | | | | | | | | | | | | | | | | | | | |
| 855 | 19 | <i>Watt</i> = 710 1153 1491 1820 2031 2143 2351 2415 2620 2668 2981 3043 3090 3399 <i>W =</i> | | | | | | | | | | | | | | | | | | | |
| 900 | 20 | <i>Watt</i> = 747 1214 1569 1916 2138 2256 2475 2542 2758 2808 3138 3203 3252 3578 <i>W =</i> | | | | | | | | | | | | | | | | | | | |
| 945 | 21 | <i>Watt</i> = 785 1275 1648 2012 2244 2369 2599 2669 2896 2948 3294 3363 3415 3757 <i>W =</i> | | | | | | | | | | | | | | | | | | | |
| 990 | 22 | <i>Watt</i> = 822 1336 1726 2107 2351 2482 2722 2796 3034 3089 3451 3524 3578 3936 <i>W =</i> | | | | | | | | | | | | | | | | | | | |
| 1035 | 23 | <i>Watt</i> = 860 1396 1805 2203 2458 2595 2846 2923 3172 3229 3608 3684 3740 4115 <i>W =</i> | | | | | | | | | | | | | | | | | | | |
| 1080 | 24 | <i>Watt</i> = 897 1457 1883 2299 2565 2707 2970 3050 3310 3370 3765 3844 3903 4294 <i>W =</i> | | | | | | | | | | | | | | | | | | | |
| 1125 | 25 | <i>Watt</i> = 934 1518 1961 2395 2672 2820 3094 3177 3448 3510 3922 4004 4066 4473 <i>W =</i> | | | | | | | | | | | | | | | | | | | |
| 1170 | 26 | <i>Watt</i> = 972 1578 2040 2491 2779 2933 3217 <i>W =</i> | | | | | | | | | | | | | | | | | | | |
| 1215 | 27 | <i>Watt</i> = 1009 1639 2118 2586 2886 3046 3341 <i>W =</i> | | | | | | | | | | | | | | | | | | | |
| 1260 | 28 | <i>Watt</i> = 1046 1700 2197 2682 2993 3159 3465 <i>W =</i> | | | | | | | | | | | | | | | | | | | |
| 1305 | 29 | <i>Watt</i> = 1084 1761 2275 2778 3100 3271 3588 <i>W =</i> | | | | | | | | | | | | | | | | | | | |
| 1350 | 30 | <i>Watt</i> = 1121 1821 2354 2874 3206 3384 3712 <i>W =</i> | | | | | | | | | | | | | | | | | | | |
| 1395 | 31 | <i>Watt</i> = 1158 1882 2432 2969 3313 3497 3836 <i>W =</i> | | | | | | | | | | | | | | | | | | | |
| 1440 | 32 | <i>Watt</i> = 1196 1943 2511 3065 3420 3610 3960 <i>W =</i> | | | | | | | | | | | | | | | | | | | |
| 1485 | 33 | <i>Watt</i> = 1233 2003 2589 3161 3527 3723 4083 <i>W =</i> | | | | | | | | | | | | | | | | | | | |
| 1530 | 34 | <i>Watt</i> = 1271 2064 2668 3257 3634 3836 4207 <i>W =</i> | | | | | | | | | | | | | | | | | | | |

| Lunghezza (mm) | N° Elementi | 200 | 300 | 400 | 500 | 565 | 600 | 665 | 685 | 750 | 765 | 865 | 885 | 900 | 1000 | 1200 | 1500 | 1800 | 2000 | 2200 | 2500 |
|----------------|-------------|---|-----|-----|-----|-----|-----|-----|-----|-----|-----|-----|-----|-----|------|------|------|------|------|------|------|
| 1575 | 35 | <i>Watt</i> = 1308 2125 2746 3353 3741 3948 4331 <i>W</i> = | | | | | | | | | | | | | | | | | | | |
| 1620 | 36 | <i>Watt</i> = 1345 2186 2825 3448 <i>W</i> = | | | | | | | | | | | | | | | | | | | |
| 1665 | 37 | <i>Watt</i> = 1383 2246 2903 3544 <i>W</i> = | | | | | | | | | | | | | | | | | | | |
| 1710 | 38 | <i>Watt</i> = 1420 2307 2981 3640 <i>W</i> = | | | | | | | | | | | | | | | | | | | |
| 1755 | 39 | <i>Watt</i> = 1457 2368 3060 3736 <i>W</i> = | | | | | | | | | | | | | | | | | | | |
| 1800 | 40 | <i>Watt</i> = 1495 2428 3138 3832 <i>W</i> = | | | | | | | | | | | | | | | | | | | |

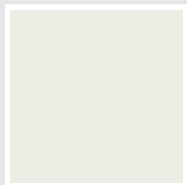
Colori e finiture

STANDARD



Bianco Standard
Cod. 01

CLASSIC



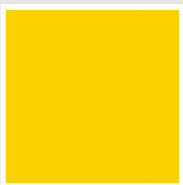
Bianco Edelweiss
Cod. 34



Avorio - RAL 1013
Cod. 02



Beige Cream
Cod. 26



Giallo - RAL 1021
Cod. 04



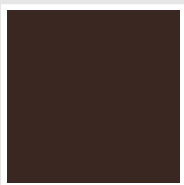
**Giallo Melone -
RAL 1028**
Cod. E7



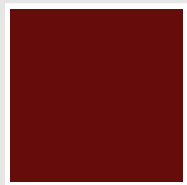
Arancio - RAL 2004
Cod. 17



**Marrone Ruggine -
RAL 8004**
Cod. E1



Marrone - RAL 8017
Cod. 09



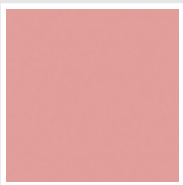
**Amaranto - RAL
3003**
Cod. 06



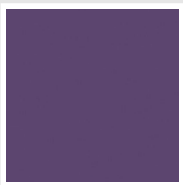
Rosso - RAL 3000
Cod. 05



**Rosso Fragola -
RAL 3018**
Cod. Y3



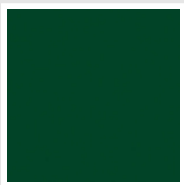
Rosa - RAL 3015
Cod. R2



**Lilla Bluastro - RAL
4005**
Cod. R3



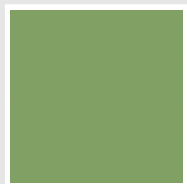
**Porpora Traffico -
RAL 4006**
Cod. R6



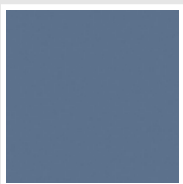
**Verde Bosco - RAL
6005**
Cod. 19



**Verde Erba - RAL
6018**
Cod. N3



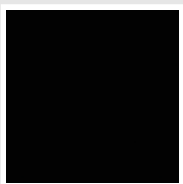
**Verde Salvia - RAL
6021**
Cod. E6



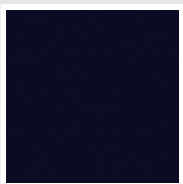
**Blu Pastello - RAL
5024**
Cod. G7



Grigio Manhattan
Cod. 03

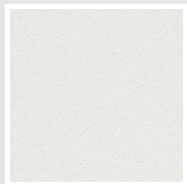


Nero - RAL 9005
Cod. 10

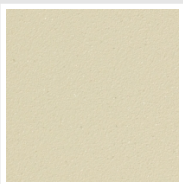


Deep Blue
Cod. 2F

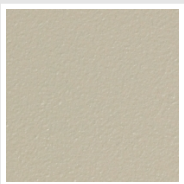
SPECIAL



Bianco Perla
Cod. 16



Quartz 1
Cod. 1C



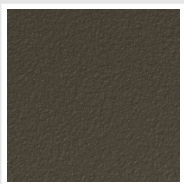
Sablé
Cod. Y4



Quartz 2
Cod. 2C



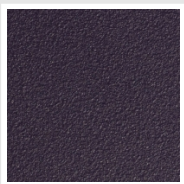
Sunstone
Cod. 2D



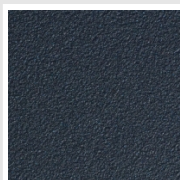
Bruno Tabacco
Cod. 1B



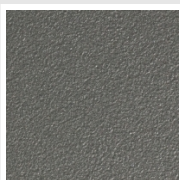
Flame Red
Cod. 7D



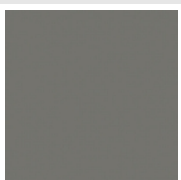
Purple Blue
Cod. 1D



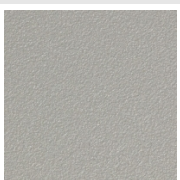
Azurite 3
Cod. 6C



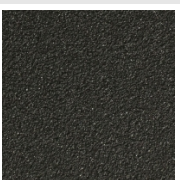
Grigio Medio
Cod. 4D



**Grigio Titanio
Metallizzato - RAL
9023**
Cod. L3



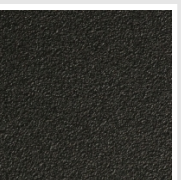
Grigio Perla
Cod. L6



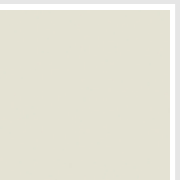
Nero Grafite
Cod. 18



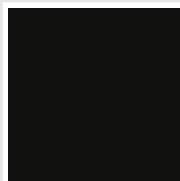
Grigio Quarzo
Cod. 31



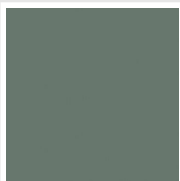
Nero Satinato
Cod. 30



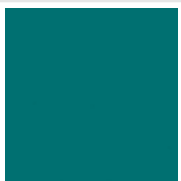
Bianco Opaco
Cod. J8



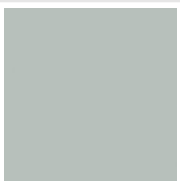
Nero Opaco
Cod. K1



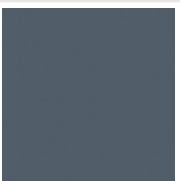
Agave
Cod. 9N



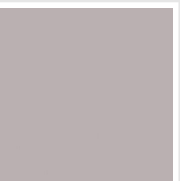
Blu Baltico
Cod. 1P



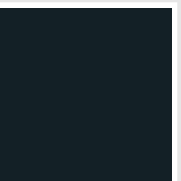
Ghiaccio
Cod. 3P



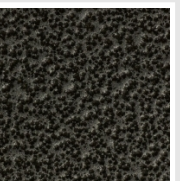
**Blu Colomba
Opaco - RAL 5014**
Cod. 4P



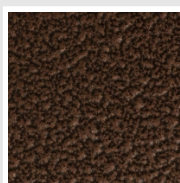
**Grigio Chiaro
Opaco**
Cod. 8N



**Grigio Cenere - Ral
7021**
Cod. G1

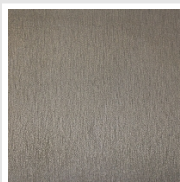


Grigio Martellato
Cod. 32



Rame Martellato
Cod. J4

FINISHES



Trattamento Loft
Cod. TR

RAL



Altri colori RAL (previa fattibilità)
Cod. ALTRIRAL

I colori rappresentati in questa cartella non sono da considerarsi impegnativi. I diversi processi tecnologici di verniciatura ed i materiali utilizzati per la realizzazione possono non avere una perfetta corrispondenza cromatica con il prodotto consegnato. L'azienda Irsap si riserva la facoltà di apportare in qualsiasi momento tutte le modifiche necessarie per il miglioramento del prodotto.