

Piano nella versione orizzontale rappresenta la flessibilità interpretativa di questo Termoarredo. La geometria piatta dei tubi e l'ampia gamma dimensionale rende Piano un radiatore versatile; disponibile in 9 altezze, da 4 a 30 elementi in numero pari.



Piano Orizzontale, 10 elementi, altezza 1820 mm, larghezza 568 mm, Blu Colomba Opaco - RAL 5014

## Caratteristiche costruttive

collettori a sezione circolare diametro 30 mm  
elementi in lamiera d'acciaio di sezione rettangolare 50x10 mm  
filettature estremità collettore 1/2" gas destra  
pressione di esercizio massima ammessa: 4 bar  
temperatura di esercizio massima ammessa: 95°C

## Dotazione di serie

sistemi di fissaggio al muro con viti e tasselli  
tappo cieco da 1/2" con copri tappo  
valvola sfiato da 1/2"

## Certificazioni



## Plus



## Dati tecnici

Modello	Profondità (mm)	Lunghezza (mm)	Interasse (mm)	Peso (kg)	Capacità (lt)
520	38,0	520	470	0,64	0,25
700	38,0	700	650	0,82	0,31
920	38,0	920	870	1,04	0,39
1220	38,0	1220	1170	1,39	0,48
1520	38,0	1520	1470	1,64	0,60
1820	38,0	1820	1770	1,94	0,70
2020	38,0	2020	1970	2,14	0,77
2220	38,0	2220	2170	2,39	0,83
2520	38,0	2520	2470	2,64	0,94

(\*) Grazie alle elevate prestazioni dei radiatori Piano Orizzontale, il  $\Delta t$  ideale per la progettazione a bassa temperatura è 30°C

Per  $\Delta t$  diversi da 50°C utilizzare la formula:  $Q=Q_n (\Delta t / 50)^n$

### Dotazione di serie

- sistemi di fissaggio al muro con viti e tasselli • tappo cieco da 1/2" con copri tappo • valvola sfiato da 1/2"

Numero Elementi	4	6	8	10	12	14	16	18	20	22	24	26	28	30
Resa a mt lineare Kcal/h a $\Delta t=50^\circ\text{C}$	226,5	334,4	439,8	542,7	643,2	741,3	837,0	930,2	1.021,1	1.109,7	1.196,1	1.280,2	1.362,2	1.442,7
Resa a mt lineare Watt a $\Delta t=50^\circ\text{C}$	263,4	388,8	511,4	631,1	747,9	862,0	973,2	1.081,6	1.187,3	1.290,4	1.390,8	1.488,6	1.583,9	1.677,5
Resa a mt lineare Watt a $\Delta t=40^\circ\text{C}$	200,3	294,8	389,0	481,5	572,4	661,8	749,5	835,5	920,1	998,9	1.075,5	1.149,9	1.222,2	1.293,0
Resa a mt lineare Watt a $\Delta t=30^\circ\text{C}$	140,7	206,3	273,3	339,7	405,4	470,6	535,2	599,0	662,3	718,0	772,0	824,3	875,0	924,4
Resa a mt lineare Watt a $\Delta t=20^\circ\text{C}$	85,5	124,8	166,2	207,8	249,4	291,1	332,9	374,8	416,7	450,9	483,9	515,7	546,3	576,0
Esponente modifica	1,228	1,241	1,227	1,213	1,199	1,185	1,171	1,157	1,143	1,148	1,152	1,157	1,162	1,167

## Rese a batteria

Altezza (mm)	N° Elementi	520	700	920	1220	1520	1820	2020	2220	2520
232	4	Watt = W = 137	184	242	321	400	479	532	585	664
344	6	Watt = W = 202	272	358	474	591	708	785	863	980
456	8	Watt = W = 266	358	470	624	777	931	1033	1135	1289
568	10	Watt = W = 328	442	581	770	959	1149	1275	1401	1590
680	12	Watt = W = 389	524	688	912	1137	1361	1511	1660	1885
792	14	Watt = W = 448	603	793	1052	1310	1569	1741	1914	2172
904	16	Watt = W = 506	681	895	1187	1479	1771	1966	2161	2452
1016	18	Watt = W = 562	757	995	1320	1644	1969	2185	2401	2726
1128	20	Watt = W = 617	831	1092	1449	1805	2161	2398	2636	2992
1240	22	Watt = W = 671	903	1187	1574	1961	2349	2607	2865	3252
1352	24	Watt = W = 723	974	1280	1697	2114	2531	2809	3088	
1464	26	Watt = W = 774	1042	1370	1816	2263	2709	3007		
1576	28	Watt = W = 824	1109	1457	1932	2408	2883			
1688	30	Watt = W = 872	1174	1543	2047	2550	3053			

## Colori e finiture

### STANDARD



**Bianco Standard**  
Cod. 01

### CLASSIC



**Bianco Edelweiss**  
Cod. 34



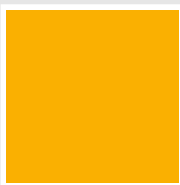
**Avorio - RAL 1013**  
Cod. 02



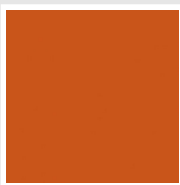
**Beige Cream**  
Cod. 26



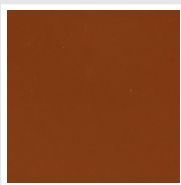
**Giallo - RAL 1021**  
Cod. 04



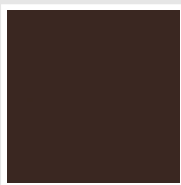
**Giallo Melone -  
RAL 1028**  
Cod. E7



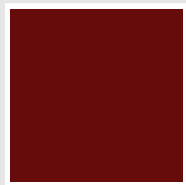
**Arancio - RAL 2004**  
Cod. 17



**Marrone Ruggine -  
RAL 8004**  
Cod. E1



**Marrone - RAL 8017**  
Cod. 09



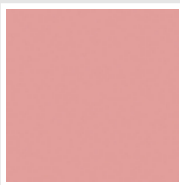
**Amaranto - RAL  
3003**  
Cod. 06



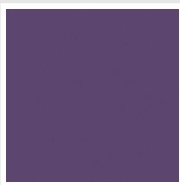
**Rosso - RAL 3000**  
Cod. 05



**Rosso Fragola -  
RAL 3018**  
Cod. Y3



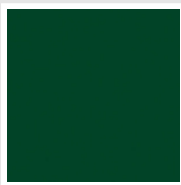
**Rosa - RAL 3015**  
Cod. R2



**Lilla Bluastro - RAL  
4005**  
Cod. R3



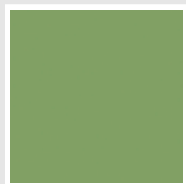
**Porpora Traffico -  
RAL 4006**  
Cod. R6



**Verde Bosco - RAL  
6005**  
Cod. 19



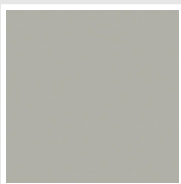
**Verde Erba - RAL  
6018**  
Cod. N3



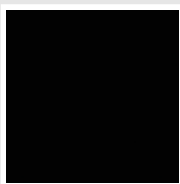
**Verde Salvia - RAL  
6021**  
Cod. E6



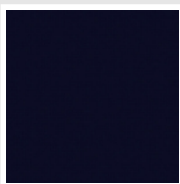
**Blu Pastello - RAL  
5024**  
Cod. G7



**Grigio Manhattan**  
Cod. 03

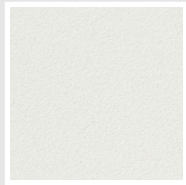


**Nero - RAL 9005**  
Cod. 10

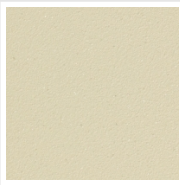


**Deep Blue**  
Cod. 2F

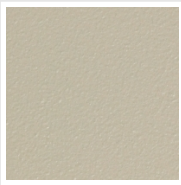
### SPECIAL



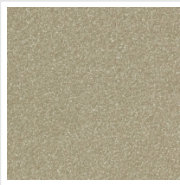
**Bianco Perla**  
Cod. 16



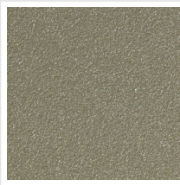
**Quartz 1**  
Cod. 1C



**Sablé**  
Cod. Y4



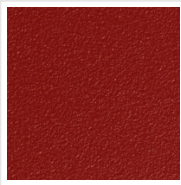
**Quartz 2**  
Cod. 2C



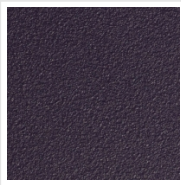
**Sunstone**  
Cod. 2D



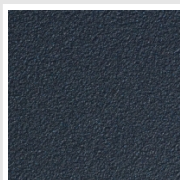
**Bruno Tabacco**  
Cod. 1B



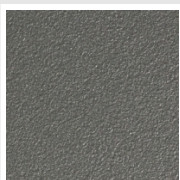
**Flame Red**  
Cod. 7D



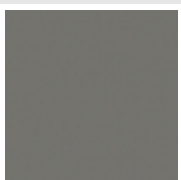
**Purple Blue**  
Cod. 1D



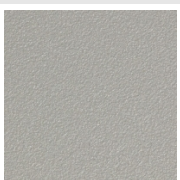
**Azurite 3**  
Cod. 6C



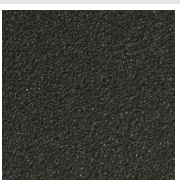
**Grigio Medio**  
Cod. 4D



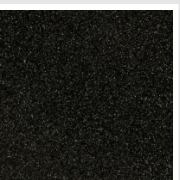
**Grigio Titanio  
Metallizzato - RAL  
9023**  
Cod. L3



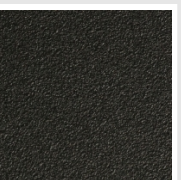
**Grigio Perla**  
Cod. L6



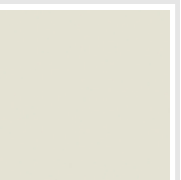
**Nero Grafite**  
Cod. 18



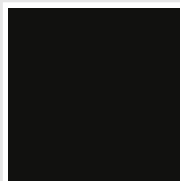
**Grigio Quarzo**  
Cod. 31



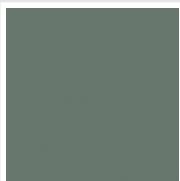
**Nero Satinato**  
Cod. 30



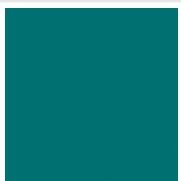
**Bianco Opaco**  
Cod. J8



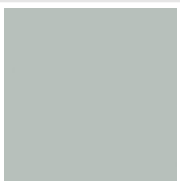
**Nero Opaco**  
Cod. K1



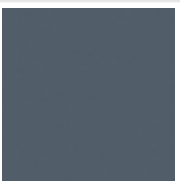
**Agave**  
Cod. 9N



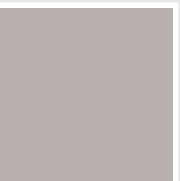
**Blu Baltico**  
Cod. 1P



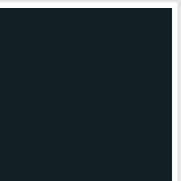
**Ghiaccio**  
Cod. 3P



**Blu Colomba  
Opaco - RAL 5014**  
Cod. 4P



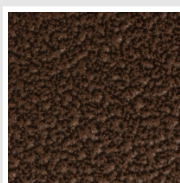
**Grigio Chiaro  
Opaco**  
Cod. 8N



**Grigio Cenere - Ral  
7021**  
Cod. G1



**Grigio Martellato**  
Cod. 32



**Rame Martellato**  
Cod. J4

## RAL



**Altri colori RAL (previa fattibilità)**  
Cod. ALTRIRAL

I colori rappresentati in questa cartella non sono da considerarsi impegnativi. I diversi processi tecnologici di verniciatura ed i materiali utilizzati per la realizzazione possono non avere una perfetta corrispondenza cromatica con il prodotto consegnato. L'azienda Irsap si riserva la facoltà di apportare in qualsiasi momento tutte le modifiche necessarie per il miglioramento del prodotto.