

Concealed single-lever mixer with cover plate with integrated shower connection - Brushed Chrome

TARA

36 045 660



- cover plate Ø 78 mm
- WRAS 2101023

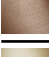
Intrinsic protection against back flow.

Article cannot be extended, please check the depth of the installation location!

Intrinsic protection against back flow.

Article cannot be extended, please check the depth of the installation location!

Fits: TARA, META

	Brushed Chrome	36 045 660-93
	Chrome	36 045 660-00
	Brushed Platinum	36 045 660-06
	Platinum	36 045 660-08
	Dark Chrome	36 045 660-19
	Light Gold	36 045 660-26
	Brushed Light Gold	36 045 660-27
	Brushed Durabronze (23kt Gold)	36 045 660-28
	Matte Black	36 045 660-33
	Brushed Bronze	36 045 660-42
	Brushed Champagne (22kt Gold)	36 045 660-46
	Champagne (22kt Gold)	36 045 660-47
	Brushed Dark Platinum	36 045 660-99

Required miscellaneous

Concealed wall mounting - 35 003 970 90

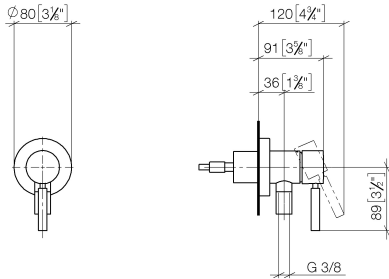


- max. recess depth 103 mm
- min. recess depth 78 mm

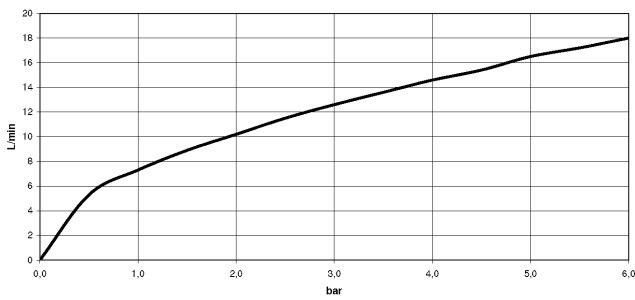
Concealed single-lever mixer with cover plate with integrated shower connection - Brushed Chrome

TARA

36 045 660
mm [inches]



Flow rate chart



Codes & Standards

DIN 4109

EN 1717

ISO 3822

Scottish Water
Byelaws

UK Water Supply
Regulations

Ü-Zeichen



Concealed single-lever mixer with cover plate with integrated shower connection - Brushed Chrome

TARA

36 045 660

Certificates

WRAS_2101

Belgaqua_21-025-2 LGA_29



Concealed single-lever mixer with cover plate with integrated shower connection - Brushed Chrome

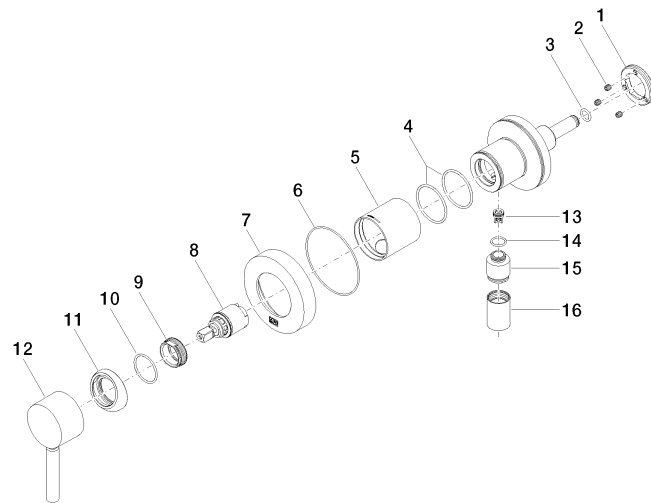
TARA

36 045 660

Product version up to 5/15/2020

Product version from 5/15/2020 to 5/15/2020

Product version from 5/15/2020





Concealed single-lever mixer with cover plate with integrated shower connection - Brushed Chrome

TARA

36 045 660

Spare parts list

Product version up to 5/15/2020

Product version from 5/15/2020 to 5/15/2020

Product version from 5/15/2020

No.	Item Number	Name	Quantity used	Delivery time
	09 24 77 002 90	nut	19	2