

Tesi Join va ad arricchire Tesi Collezione con la sua linea sinuosa ed accattivante. Le linee morbide che si intrecciano fanno di questo corpo scaldante il protagonista di ogni ambiente in cui viene inserito.



Tesi Join, verticale, 10 elementi, altezza 2002 mm, larghezza 474 mm, Bianco Perla

Caratteristiche costruttive

tubi in lamiera d'acciaio di diametro 25 mm
collettori in lamiera d'acciaio stampati
passo elemento 45 mm
fillettature estremità collettore sup. e inf. 1/2" G dx
pressione di esercizio massima ammessa 8 bar
temperatura di esercizio massima ammessa 95°C
misura dell'interasse valvola Irsap pari a 41÷44 mm
misura dell'interasse detentore Irsap pari a 41÷44 mm

Dotazione di serie

kit per il fissaggio a muro in finitura coordinata al radiatore
kit allacciamento idraulico (valvola e detentore) in finitura coordinata al radiatore
kit valvola sfiato cromata
kit copri tubi e copri foro a muro (rosette)
tappo cieco da 1/2" completo di copri tappo cromato.
N.B.: Il kit di allacciamento idraulico, fornito in dotazione con il radiatore, comprende valvola e detentore in versione squadra, sia per valvola e detentore separati sia per valvola passo 50 mm.

Plus



Dati tecnici

Modello	Profondità (mm)	Altezza (mm)	Larghezza (mm)	Interasse (mm)	Peso (kg)	Capacità (lt)	$\Delta t=50^{\circ}\text{C}$ (kcal/h)	$\Delta t=50^{\circ}\text{C}$ (Watt)	$\Delta t=40^{\circ}\text{C}$ (Watt)	$\Delta t=30^{\circ}\text{C}$ (Watt)	$\Delta t=20^{\circ}\text{C}$ (Watt)	Esponente
1800 08 el.	65,0	1802	391	1735	19,30	13,10	855,2	994,4	739,2	504,0	294,4	1,329
1800 10 el.	65,0	1802	481	1735	24,10	16,40	1.069,0	1.243,0	924,0	630,0	368,0	1,329
1800 12 el.	65,0	1802	571	1735	28,90	19,70	1.282,8	1.491,6	1.108,8	756,0	441,6	1,329
2000 08 el.	65,0	2002	391	1935	21,40	14,40	956,0	1.112,0	828,8	567,2	332,0	1,319
2000 10 el.	65,0	2002	481	1935	26,70	18,00	1.195,0	1.390,0	1.036,0	709,0	415,0	1,319
2000 12 el.	65,0	2002	571	1935	32,00	21,60	1.434,0	1.668,0	1.243,2	850,8	498,0	1,319

(*) Grazie alle elevate prestazioni dei radiatori Tesi Join, il Δt ideale per la progettazione a bassa temperatura è 30°C

Per Δt diversi da 50°C utilizzare la formula: $Q=Q_n (\Delta t / 50)^n$

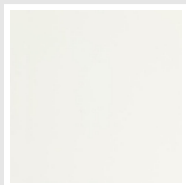
A partire dalle vendite dell'anno 2010, tutta la gamma dei radiatori TESI è garantita 10 anni.

Dotazione di serie

• kit per il fissaggio a muro in finitura coordinata al radiatore • kit allacciamento idraulico (valvola e detentore) in finitura coordinata al radiatore • kit valvola sfiato cromata • kit copri tubi e copri foro a muro (rosette) • tappo cieco da 1/2" completo di copri tappo cromato.
N.B.: Il kit di allacciamento idraulico, fornito in dotazione con il radiatore, comprende valvola e detentore in versione squadro, sia per valvola e detentore separati sia per valvola passo 50 mm.

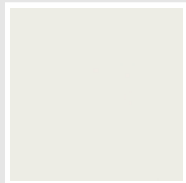
Colori e finiture

STANDARD



Bianco Standard
Cod. 01

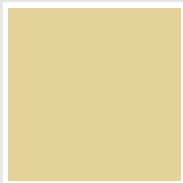
CLASSIC



Bianco Edelweiss
Cod. 34



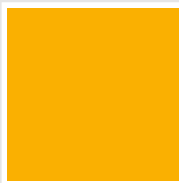
Avorio - RAL 1013
Cod. 02



Beige Cream
Cod. 26



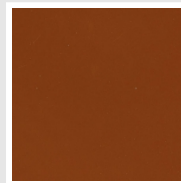
Giallo - RAL 1021
Cod. 04



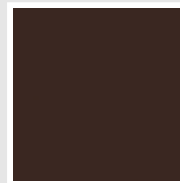
**Giallo Melone -
RAL 1028**
Cod. E7



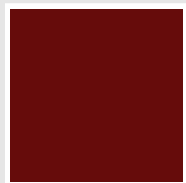
Arancio - RAL 2004
Cod. 17



**Marrone Ruggine -
RAL 8004**
Cod. E1



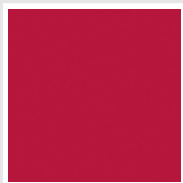
Marrone - RAL 8017
Cod. 09



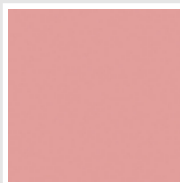
**Amaranto - RAL
3003**
Cod. 06



Rosso - RAL 3000
Cod. 05



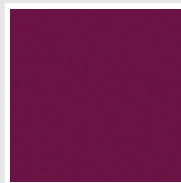
**Rosso Fragola -
RAL 3018**
Cod. Y3



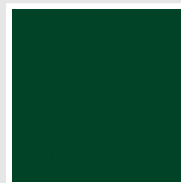
Rosa - RAL 3015
Cod. R2



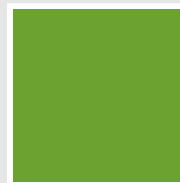
**Lilla Bluastro - RAL
4005**
Cod. R3



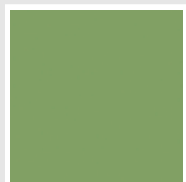
**Porpora Traffico -
RAL 4006**
Cod. R6



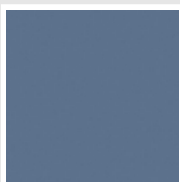
**Verde Bosco - RAL
6005**
Cod. 19



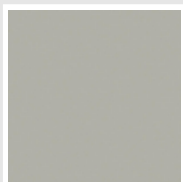
**Verde Erba - RAL
6018**
Cod. N3



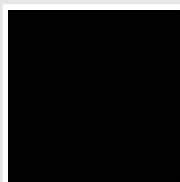
**Verde Salvia - RAL
6021**
Cod. E6



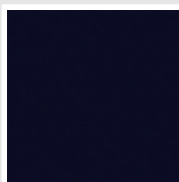
**Blu Pastello - RAL
5024**
Cod. G7



Grigio Manhattan
Cod. 03

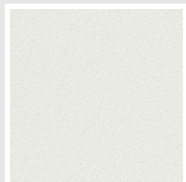


Nero - RAL 9005
Cod. 10

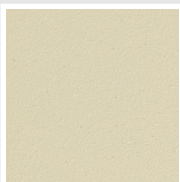


Deep Blue
Cod. 2F

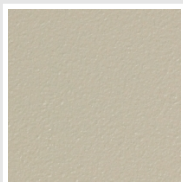
SPECIAL



Bianco Perla
Cod. 16



Quartz 1
Cod. 1C



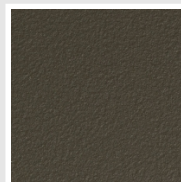
Sablé
Cod. Y4



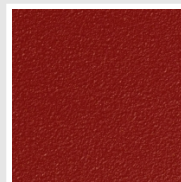
Quartz 2
Cod. 2C



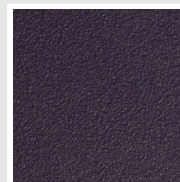
Sunstone
Cod. 2D



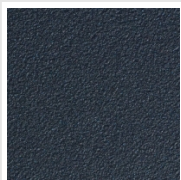
Bruno Tabacco
Cod. 1B



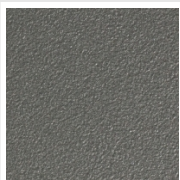
Flame Red
Cod. 7D



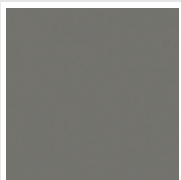
Purple Blue
Cod. 1D



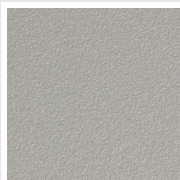
Azurite 3
Cod. 6C



Grigio Medio
Cod. 4D



**Grigio Titanio
Metallizzato - RAL
9023**
Cod. L3



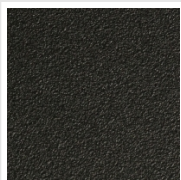
Grigio Perla
Cod. L6



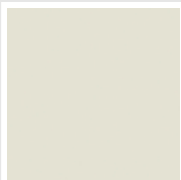
Nero Grafite
Cod. 18



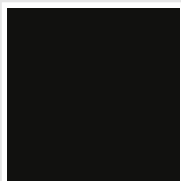
Grigio Quarzo
Cod. 31



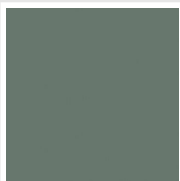
Nero Satinato
Cod. 30



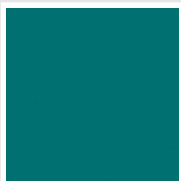
Bianco Opaco
Cod. J8



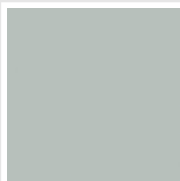
Nero Opaco
Cod. K1



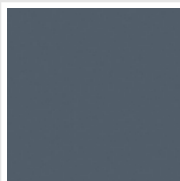
Agave
Cod. 9N



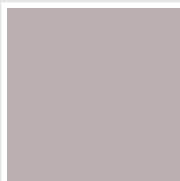
Blu Baltico
Cod. 1P



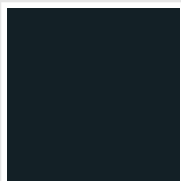
Ghiaccio
Cod. 3P



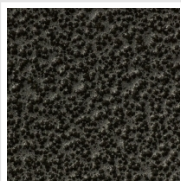
**Blu Colomba
Opaco - RAL 5014**
Cod. 4P



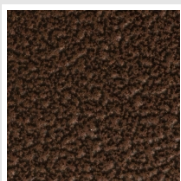
**Grigio Chiaro
Opaco**
Cod. 8N



**Grigio Cenere - Ral
7021**
Cod. G1

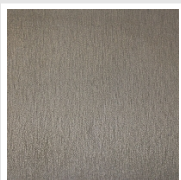


Grigio Martellato
Cod. 32



Rame Martellato
Cod. J4

FINISHES



Trattamento Loft
Cod. TR

RAL



Altri colori RAL (previa fattibilità)
Cod. ALTRIRAL

I colori rappresentati in questa cartella non sono da considerarsi impegnativi. I diversi processi tecnologici di verniciatura ed i materiali utilizzati per la realizzazione possono non avere una perfetta corrispondenza cromatica con il prodotto consegnato. L'azienda Irsap si riserva la facoltà di apportare in qualsiasi momento tutte le modifiche necessarie per il miglioramento del prodotto.