

# Arpa12\_2 Orizzontale

Arpa12\_2 Orizzontale rappresenta una moderna estetica che si integra in qualsiasi ambiente. Lo stile di Arpa12\_2 si completa nella modulare funzionalità.



Arpa12 2, orizzontale, 30 elementi, altezza 544 mm, larghezza 1820 mm, Bianco Standard

## Caratteristiche costruttive

collettori a sezione circolare diametro 30 mm  
elementi in lamiera d'acciaio diametro 12 mm  
filettature estremità collettore 1/2" Gas destra  
pressione di esercizio massima ammessa: 10 bar  
temperatura di esercizio massima ammessa: 95°C

## Dotazione di serie

sistemi di fissaggio al muro con viti e tasselli  
tappo cieco da 1/2" con copri tappo  
valvola sfiato da 1/2"

## Certificazioni



## Plus



## Dati tecnici

| Modello | Profondità (mm) | Lunghezza (mm) | Interasse (mm) | Peso (kg) | Capacità (lt) |
|---------|-----------------|----------------|----------------|-----------|---------------|
| 520     | 50,0            | 520            | 470            | 0,39      | 0,10          |
| 550     | 50,0            | 550            | 500            | 0,41      | 0,10          |
| 650     | 50,0            | 650            | 600            | 0,47      | 0,11          |
| 670     | 50,0            | 670            | 620            | 0,49      | 0,12          |
| 700     | 50,0            | 700            | 650            | 0,51      | 0,12          |
| 750     | 50,0            | 750            | 700            | 0,54      | 0,13          |
| 850     | 50,0            | 850            | 800            | 0,60      | 0,14          |
| 870     | 50,0            | 870            | 820            | 0,62      | 0,15          |
| 920     | 50,0            | 920            | 870            | 0,65      | 0,15          |
| 1220    | 50,0            | 1220           | 1170           | 0,94      | 0,20          |
| 1520    | 50,0            | 1520           | 1470           | 1,03      | 0,24          |
| 1820    | 50,0            | 1820           | 1770           | 1,22      | 0,28          |
| 2020    | 50,0            | 2020           | 1970           | 1,35      | 0,31          |
| 2220    | 50,0            | 2220           | 2170           | 1,48      | 0,34          |
| 2520    | 50,0            | 2520           | 2470           | 1,67      | 0,39          |

(\*) Grazie alle elevate prestazioni dei radiatori Arpa12\_2 Orizzontale, il  $\Delta t$  ideale per la progettazione a bassa temperatura è 30°C

Per  $\Delta t$  diversi da 50°C utilizzare la formula:  $Q=Q_n (\Delta t / 50)^n$

### Dotazione di serie

- sistemi di fissaggio al muro con viti e tasselli • tappo cieco da 1/2" con copri tappo • valvola sfiato da 1/2"

### Numero Elementi

4 6 8 10 12 14 16 18 20 22 24 26 28 30 32 34 36 38 40 42 44 46 48 50 52

Resa a mt lineare Kcal/h a  $\Delta t=50^\circ\text{C}$  197,9267,7337,5407,3477,2547,0616,8686,6756,4826,2896,0 940,1 983,3 1.026,01.067,91.109,61.150,71.191,51.232,01.272,41.312,41.352,41.392,31.432,01.472,01.512,01.552,01.592,01.632,01.672,01.712,01.752,01.792,01.832,01.872,01.912,01.952,01.992,02.032,02.072,02.112,02.152,02.192,02.232,02.272,02.312,02.352,02.392,02.432,02.472,02.512,02.552,02.592,02.632,02.672,02.712,02.752,02.792,02.832,02.872,02.912,02.952,02.992,03.032,03.072,03.112,03.152,03.192,03.232,03.272,03.312,03.352,03.392,03.432,03.472,03.512,03.552,03.592,03.632,03.672,03.712,03.752,03.792,03.832,03.872,03.912,03.952,03.992,04.032,04.072,04.112,04.152,04.192,04.232,04.272,04.312,04.352,04.392,04.432,04.472,04.512,04.552,04.592,04.632,04.672,04.712,04.752,04.792,04.832,04.872,04.912,04.952,04.992,05.032,05.072,05.112,05.152,05.192,05.232,05.272,05.312,05.352,05.392,05.432,05.472,05.512,05.552,05.592,05.632,05.672,05.712,05.752,05.792,05.832,05.872,05.912,05.952,05.992,06.032,06.072,06.112,06.152,06.192,06.232,06.272,06.312,06.352,06.392,06.432,06.472,06.512,06.552,06.592,06.632,06.672,06.712,06.752,06.792,06.832,06.872,06.912,06.952,06.992,07.032,07.072,07.112,07.152,07.192,07.232,07.272,07.312,07.352,07.392,07.432,07.472,07.512,07.552,07.592,07.632,07.672,07.712,07.752,07.792,07.832,07.872,07.912,07.952,07.992,08.032,08.072,08.112,08.152,08.192,08.232,08.272,08.312,08.352,08.392,08.432,08.472,08.512,08.552,08.592,08.632,08.672,08.712,08.752,08.792,08.832,08.872,08.912,08.952,08.992,09.032,09.072,09.112,09.152,09.192,09.232,09.272,09.312,09.352,09.392,09.432,09.472,09.512,09.552,09.592,09.632,09.672,09.712,09.752,09.792,09.832,09.872,09.912,09.952,09.992,10.032,10.072,10.112,10.152,10.192,10.232,10.272,10.312,10.352,10.392,10.432,10.472,10.512,10.552,10.592,10.632,10.672,10.712,10.752,10.792,10.832,10.872,10.912,10.952,10.992,11.032,11.072,11.112,11.152,11.192,11.232,11.272,11.312,11.352,11.392,11.432,11.472,11.512,11.552,11.592,11.632,11.672,11.712,11.752,11.792,11.832,11.872,11.912,11.952,11.992,12.032,12.072,12.112,12.152,12.192,12.232,12.272,12.312,12.352,12.392,12.432,12.472,12.512,12.552,12.592,12.632,12.672,12.712,12.752,12.792,12.832,12.872,12.912,12.952,12.992,13.032,13.072,13.112,13.152,13.192,13.232,13.272,13.312,13.352,13.392,13.432,13.472,13.512,13.552,13.592,13.632,13.672,13.712,13.752,13.792,13.832,13.872,13.912,13.952,13.992,14.032,14.072,14.112,14.152,14.192,14.232,14.272,14.312,14.352,14.392,14.432,14.472,14.512,14.552,14.592,14.632,14.672,14.712,14.752,14.792,14.832,14.872,14.912,14.952,14.992,15.032,15.072,15.112,15.152,15.192,15.232,15.272,15.312,15.352,15.392,15.432,15.472,15.512,15.552,15.592,15.632,15.672,15.712,15.752,15.792,15.832,15.872,15.912,15.952,15.992,16.032,16.072,16.112,16.152,16.192,16.232,16.272,16.312,16.352,16.392,16.432,16.472,16.512,16.552,16.592,16.632,16.672,16.712,16.752,16.792,16.832,16.872,16.912,16.952,16.992,17.032,17.072,17.112,17.152,17.192,17.232,17.272,17.312,17.352,17.392,17.432,17.472,17.512,17.552,17.592,17.632,17.672,17.712,17.752,17.792,17.832,17.872,17.912,17.952,17.992,18.032,18.072,18.112,18.152,18.192,18.232,18.272,18.312,18.352,18.392,18.432,18.472,18.512,18.552,18.592,18.632,18.672,18.712,18.752,18.792,18.832,18.872,18.912,18.952,18.992,19.032,19.072,19.112,19.152,19.192,19.232,19.272,19.312,19.352,19.392,19.432,19.472,19.512,19.552,19.592,19.632,19.672,19.712,19.752,19.792,19.832,19.872,19.912,19.952,19.992,20.032,20.072,20.112,20.152,20.192,20.232,20.272,20.312,20.352,20.392,20.432,20.472,20.512,20.552,20.592,20.632,20.672,20.712,20.752,20.792,20.832,20.872,20.912,20.952,20.992,21.032,21.072,21.112,21.152,21.192,21.232,21.272,21.312,21.352,21.392,21.432,21.472,21.512,21.552,21.592,21.632,21.672,21.712,21.752,21.792,21.832,21.872,21.912,21.952,21.992,22.032,22.072,22.112,22.152,22.192,22.232,22.272,22.312,22.352,22.392,22.432,22.472,22.512,22.552,22.592,22.632,22.672,22.712,22.752,22.792,22.832,22.872,22.912,22.952,22.992,23.032,23.072,23.112,23.152,23.192,23.232,23.272,23.312,23.352,23.392,23.432,23.472,23.512,23.552,23.592,23.632,23.672,23.712,23.752,23.792,23.832,23.872,23.912,23.952,23.992,24.032,24.072,24.112,24.152,24.192,24.232,24.272,24.312,24.352,24.392,24.432,24.472,24.512,24.552,24.592,24.632,24.672,24.712,24.752,24.792,24.832,24.872,24.912,24.952,24.992,25.032,25.072,25.112,25.152,25.192,25.232,25.272,25.312,25.352,25.392,25.432,25.472,25.512,25.552,25.592,25.632,25.672,25.712,25.752,25.792,25.832,25.872,25.912,25.952,25.992,26.032,26.072,26.112,26.152,26.192,26.232,26.272,26.312,26.352,26.392,26.432,26.472,26.512,26.552,26.592,26.632,26.672,26.712,26.752,26.792,26.832,26.872,26.912,26.952,26.992,27.032,27.072,27.112,27.152,27.192,27.232,27.272,27.312,27.352,27.392,27.432,27.472,27.512,27.552,27.592,27.632,27.672,27.712,27.752,27.792,27.832,27.872,27.912,27.952,27.992,28.032,28.072,28.112,28.152,28.192,28.232,28.272,28.312,28.352,28.392,28.432,28.472,28.512,28.552,28.592,28.632,28.672,28.712,28.752,28.792,28.832,28.872,28.912,28.952,28.992,29.032,29.072,29.112,29.152,29.192,29.232,29.272,29.312,29.352,29.392,29.432,29.472,29.512,29.552,29.592,29.632,29.672,29.712,29.752,29.792,29.832,29.872,29.912,29.952,29.992,30.032,30.072,30.112,30.152,30.192,30.232,30.272,30.312,30.352,30.392,30.432,30.472,30.512,30.552,30.592,30.632,30.672,30.712,30.752,30.792,30.832,30.872,30.912,30.952,30.992,31.032,31.072,31.112,31.152,31.192,31.232,31.272,31.312,31.352,31.392,31.432,31.472,31.512,31.552,31.592,31.632,31.672,31.712,31.752,31.792,31.832,31.872,31.912,31.952,31.992,32.032,32.072,32.112,32.152,32.192,32.232,32.272,32.312,32.352,32.392,32.432,32.472,32.512,32.552,32.592,32.632,32.672,32.712,32.752,32.792,32.832,32.872,32.912,32.952,32.992,33.032,33.072,33.112,33.152,33.192,33.232,33.272,33.312,33.352,33.392,33.432,33.472,33.512,33.552,33.592,33.632,33.672,33.712,33.752,33.792,33.832,33.872,33.912,33.952,33.992,34.032,34.072,34.112,34.152,34.192,34.232,34.272,34.312,34.352,34.392,34.432,34.472,34.512,34.552,34.592,34.632,34.672,34.712,34.752,34.792,34.832,34.872,34.912,34.952,34.992,35.032,35.072,35.112,35.152,35.192,35.232,35.272,35.312,35.352,35.392,35.432,35.472,35.512,35.552,35.592,35.632,35.672,35.712,35.752,35.792,35.832,35.872,35.912,35.952,35.992,36.032,36.072,36.112,36.152,36.192,36.232,36.272,36.312,36.352,36.392,36.432,36.472,36.512,36.552,36.592,36.632,36.672,36.712,36.752,36.792,36.832,36.872,36.912,36.952,36.992,37.032,37.072,37.112,37.152,37.192,37.232,37.272,37.312,37.352,37.392,37.432,37.472,37.512,37.552,37.592,37.632,37.672,37.712,37.752,37.792,37.832,37.872,37.912,37.952,37.992,38.032,38.072,38.112,38.152,38.192,38.232,38.272,38.312,38.352,38.392,38.432,38.472,38.512,38.552,38.592,38.632,38.672,38.712,38.752,38.792,38.832,38.872,38.912,38.952,38.992,39.032,39.072,39.112,39.152,39.192,39.232,39.272,39.312,39.352,39.392,39.432,39.472,39.512,39.552,39.592,39.632,39.672,39.712,39.752,39.792,39.832,39.872,39.912,39.952,39.992,40.032,40.072,40.112,40.152,40.192,40.232,40.272,40.312,40.352,40.392,40.432,40.472,40.512,40.552,40.592,40.632,40.672,40.712,40.752,40.792,40.832,40.872,40.912,40.952,40.992,41.032,41.072,41.112,41.152,41.192,41.232,41.272,41.312,41.352,41.392,41.432,41.472,41.512,41.552,41.592,41.632,41.672,41.712,41.752,41.792,41.832,41.872,41.912,41.952,41.992,42.032,42.072,42.112,42.152,42.192,42.232,42.272,42.312,42.352,42.392,42.432,42.472,42.512,42.552,42.592,42.632,42.672,42.712,42.752,42.792,42.832,42.872,42.912,42.952,42.992,43.032,43.072,43.112,43.152,43.192,43.232,43.272,43.312,43.352,43.392,43.432,43.472,43.512,43.552,43.592,43.632,43.672,43.712,43.752,43.792,43.832,43.872,43.912,43.952,43.992,44.032,44.072,44.112,44.152,44.192,44.232,44.272,44.312,44.352,44.392,44.432,44.472,44.512,44.552,44.592,44.632,44.672,44.712,44.752,44.792,44.832,44.872,44.912,44.952,44.992,45.032,45.072,45.112,45.152,45.192,45.232,45.272,45.312,45.352,45.392,45.432,45.472,45.512,45.552,45.592,45.632,45.672,45.712,45.752,45.792,45.832,45.872,45.912,45.952,45.992,46.032,46.072,46.112,46.152,46.192,46.232,46.272,46.312,46.352,46.392,46.432,46.472,46.512,46.552,46.592,46.632,46.672,46.712,46.752,46.792,46.832,46.872,46.912,46.952,46.992,47.032,47.072,47.112,47.152,47.192,47.232,47.272,47.312,47.352,47.392,47.432,47.472,47.512,47.552,47.592,47.632,47.672,47.712,47.752,47.792,47.832,47.872,47.912,47.952,47.992,48.032,48.072,48.112,48.152,48.192,48.232,48.272,48.312,48.352,48.392,48.432,48.472,48.512,48.552,48.592,48.632,48.672,48.712,48.752,48.792,48.832,48.872,48.912,48.952,48.992,49.032,49.072,49.112,49.152,49.192,49.232,49.272,49.312,49.352,49.392,49.432,49.472,49.512,49.552,49.592,49.632,49.672,49.712,49.752,49.792,49.832,49.872,49.912,49.952,49.992,50.032,50.072,50.112,50.152,50.192,50.232,50.272,50.312,50.352,50.392,50.432,50.472,50.512,50.552,50.592,50.632,50.672,50.712,50.752,50.792,50.832,50.872,50.912,50.952,50.992,51.032,51.072,51.112,51.152,51.192,51.232,51.272,51.312,51.352,51.392,51.432,51.472,51.512,51.552,51.592,51.632,51.672,51.712,51.752,51.792,51.832,51.872,51.912,51.952,51.992,52.032,52.072,52.112,52.152,52.192,52.232,52.272,52.312,52.352,52.392,52.432,52.472,52.512,52.552,52.592,52.632,52.672,52.712,52.752,52.792,52.832,52.872,52.912,52.952,52.992,53.032,53.072,53.112,53.152,53.192,53.232,53.272,53.312,53.352,53.392,53.432,53.472,53.512,53.552,53.592,53.632,53.672,53.712,53.752,53.792,53.832,53.872,53.912,53.952,53.992,54.032,54.072,54.112,54.152,54.192,54.232,54.272,54.312,54.352,54.392,54.432,54.472,54.512,54.552,54.592,54.632,54.672,54.712,54.752,54.792,54.832,54.872,54.912,54.952,54.992,55.032,55.072,55.112,55.152,55.192,55.232,55.272,55.312,55.352,55.392,55.432,55.472,55.512,55.552,55.592,55.632,55.672,55.712,55.752,55.792,55.832,55.872,55.912,55.952,55.992,56.032,56.072,56.112,56.152,56.192,56.232,56.272,56.312,56.352,56.392,56.432,56.472,56.512,56.552,56.592,56.632,56.672,56.712,56.752,56.792,56.832,56.872,56.912,56.952,56.992,57.032,57.072,57.112,57.152,57.192,57.232,57.272,57.312,57.352,57.392,57.432,57.472,57.512,57.552,57.592,57.632,57.672,57.712,57.752,57.792,57.832,57.872,57.912,57.952,57.992,58.032,58.072,58.112,58.152,58.192,58.232,58.272,58.312,58.352,58.392,58.432,58.472,58.512,58.552,58.592,58.632,58.672,58.712,58.752,58.792,58.832,58.872,58.912,58.952,58.992,59.032,59.072,59.112,59.152,59.192,59.232,59.272,59.312,59.352,59.392,59.432,59.472,59.512,59.552,59.592,59.632,59.672,59.712,59.752,59.792,59.832,59.872,59.912,59.952,59.992,60.032,60.072,60.112,60.152,60.192,60.232,60.272,60.312,60.352,60.392,60.432,60.472,60.512,60.552,60.592,60.632,60.672,60.712,60.752,60.792,60.832

|  |   |  |       |       |       |       |   |
|--|---|--|-------|-------|-------|-------|---|
| Resa a mt lineare Watt a $\Delta t=40^{\circ}\text{C}$ | 175,2236,9298,5359,7423,2487,3547,2606,5664,1721,0797,6 | 835,0  | 871,5 | 907,3 | 942,3 | 978,7 | 1.014,71.050,41.085,91.121,11.156,11.190,91.225,51.260,01.1 |
| Resa a mt lineare Watt a $\Delta t=30^{\circ}\text{C}$ | 123,3166,6209,7252,3298,5345,7386,0425,5462,3498,0565,2 | 590,0  | 614,0 | 637,4 | 660,2 | 685,5 | 710,4 735,1 759,6 784,0 808,2 832,1 855,9 879,6 90          |
| Resa a mt lineare Watt a $\Delta t=20^{\circ}\text{C}$ | 75,1  | 101,4127,6153,0182,5213,1236,1258,2277,5295,7347,8 | 361,6 | 374,8 | 387,6 | 399,8 | 414,9 429,8 444,5 459,1 473,6 487,9 502,1 516,1 530,0 54    |
| Esponente modifica                                     | 1,2221,2241,2271,2331,2131,1941,2131,2321,2591,2861,197 | 1,207  | 1,217 | 1,227 | 1,237 | 1,238 | 1,239 1,241 1,242 1,243 1,244 1,246 1,248 1,249 1,          |

## Rese a batteria

| Altezza (mm) | N° Elementi | 520                   | 550 | 650 | 670  | 700  | 750  | 850  | 870  | 920  | 1220 | 1520 | 1820 | 2020 | 2220 | 2520 |
|--------------|-------------|-----------------------|-----|-----|------|------|------|------|------|------|------|------|------|------|------|------|
| 76           | 4           | $Watt = 120$<br>$W =$ | 127 | 150 | 154  | 161  | 173  | 196  | 200  | 212  | 281  | 350  | 419  | 465  | 511  | 580  |
| 112          | 6           | $Watt = 162$<br>$W =$ | 171 | 202 | 209  | 218  | 233  | 265  | 271  | 286  | 380  | 473  | 567  | 629  | 691  | 784  |
| 148          | 8           | $Watt = 204$<br>$W =$ | 216 | 255 | 263  | 275  | 294  | 334  | 341  | 361  | 479  | 597  | 714  | 793  | 871  | 989  |
| 184          | 10          | $Watt = 246$<br>$W =$ | 261 | 308 | 317  | 332  | 355  | 403  | 412  | 436  | 578  | 720  | 862  | 957  | 1052 | 1194 |
| 220          | 12          | $Watt = 289$<br>$W =$ | 305 | 361 | 372  | 388  | 416  | 472  | 483  | 510  | 677  | 843  | 1010 | 1121 | 1232 | 1398 |
| 256          | 14          | $Watt = 331$<br>$W =$ | 350 | 413 | 426  | 445  | 477  | 541  | 553  | 585  | 776  | 967  | 1158 | 1285 | 1412 | 1603 |
| 292          | 16          | $Watt = 373$<br>$W =$ | 394 | 466 | 481  | 502  | 538  | 610  | 624  | 660  | 875  | 1090 | 1305 | 1449 | 1592 | 1807 |
| 328          | 18          | $Watt = 415$<br>$W =$ | 439 | 519 | 535  | 559  | 599  | 679  | 695  | 734  | 974  | 1214 | 1453 | 1613 | 1772 | 2012 |
| 364          | 20          | $Watt = 457$<br>$W =$ | 484 | 572 | 589  | 616  | 660  | 748  | 765  | 809  | 1073 | 1337 | 1601 | 1777 | 1953 | 2216 |
| 400          | 22          | $Watt = 500$<br>$W =$ | 528 | 624 | 644  | 673  | 721  | 817  | 836  | 884  | 1172 | 1460 | 1749 | 1941 | 2133 | 2421 |
| 436          | 24          | $Watt = 542$<br>$W =$ | 573 | 677 | 698  | 729  | 781  | 886  | 906  | 959  | 1271 | 1584 | 1896 | 2105 | 2313 | 2626 |
| 472          | 26          | $Watt = 588$<br>$W =$ | 601 | 711 | 732  | 765  | 820  | 929  | 951  | 1006 | 1334 | 1662 | 1989 | 2208 | 2427 | 2755 |
| 508          | 28          | $Watt = 595$<br>$W =$ | 629 | 743 | 766  | 800  | 858  | 972  | 995  | 1052 | 1395 | 1738 | 2081 | 2310 | 2538 | 2881 |
| 544          | 30          | $Watt = 620$<br>$W =$ | 656 | 775 | 799  | 835  | 895  | 1014 | 1038 | 1098 | 1455 | 1813 | 2171 | 2410 | 2648 | 3006 |
| 580          | 32          | $Watt = 646$<br>$W =$ | 683 | 807 | 832  | 869  | 931  | 1056 | 1080 | 1142 | 1515 | 1888 | 2260 | 2508 | 2757 | 3129 |
| 616          | 34          | $Watt = 671$<br>$W =$ | 710 | 839 | 864  | 903  | 968  | 1097 | 1122 | 1187 | 1574 | 1961 | 2348 | 2606 | 2864 | 3251 |
| 652          | 36          | $Watt = 696$<br>$W =$ | 736 | 870 | 896  | 937  | 1004 | 1137 | 1164 | 1231 | 1632 | 2034 | 2435 | 2703 | 2970 | 3372 |
| 688          | 38          | $Watt = 720$<br>$W =$ | 762 | 901 | 928  | 970  | 1039 | 1178 | 1205 | 1275 | 1690 | 2106 | 2522 | 2799 | 3076 |      |
| 724          | 40          | $Watt = 745$<br>$W =$ | 788 | 931 | 960  | 1003 | 1074 | 1218 | 1246 | 1318 | 1748 | 2178 | 2607 | 2894 | 3180 |      |
| 760          | 42          | $Watt = 769$<br>$W =$ | 814 | 962 | 991  | 1036 | 1110 | 1258 | 1287 | 1361 | 1805 | 2249 | 2693 | 2989 | 3284 |      |
| 796          | 44          | $Watt = 794$<br>$W =$ | 839 | 992 | 1022 | 1068 | 1145 | 1297 | 1328 | 1404 | 1862 | 2320 | 2778 | 3083 | 3388 |      |

| Altezza (mm) | N° Elementi |               | 520 | 550  | 650  | 670  | 700  | 750  | 850  | 870  | 920  | 1220 | 1520 | 1820 | 2020 | 2220 | 2520 |
|--------------|-------------|---------------|-----|------|------|------|------|------|------|------|------|------|------|------|------|------|------|
| 832          | 46          | Watt =<br>W = | 818 | 865  | 1022 | 1054 | 1101 | 1179 | 1337 | 1368 | 1447 | 1919 | 2390 | 2862 | 3177 |      |      |
| 868          | 48          | Watt =<br>W = | 842 | 890  | 1052 | 1085 | 1133 | 1214 | 1376 | 1408 | 1489 | 1975 | 2461 | 2946 | 3270 |      |      |
| 904          | 50          | Watt =<br>W = | 866 | 916  | 1082 | 1116 | 1166 | 1249 | 1415 | 1449 | 1532 | 2031 | 2531 | 3030 | 3364 |      |      |
| 940          | 52          | Watt =<br>W = | 890 | 941  | 1112 | 1147 | 1198 | 1283 | 1455 | 1489 | 1574 | 2088 | 2601 | 3114 |      |      |      |
| 976          | 54          | Watt =<br>W = | 914 | 967  | 1142 | 1177 | 1230 | 1318 | 1494 | 1529 | 1617 | 2144 | 2671 | 3198 |      |      |      |
| 1012         | 56          | Watt =<br>W = | 938 | 992  | 1172 | 1208 | 1262 | 1353 | 1533 | 1569 | 1659 | 2200 | 2741 |      |      |      |      |
| 1048         | 58          | Watt =<br>W = | 962 | 1017 | 1202 | 1239 | 1295 | 1387 | 1572 | 1609 | 1702 | 2256 | 2811 |      |      |      |      |
| 1084         | 60          | Watt =<br>W = | 986 | 1043 | 1232 | 1270 | 1327 | 1422 | 1611 | 1649 | 1744 | 2313 | 2881 |      |      |      |      |

## Colori e finiture

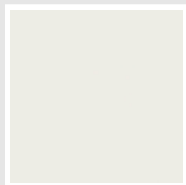
### STANDARD



**Bianco Standard**

Cod. 01

### CLASSIC



**Bianco Edelweiss**

Cod. 34



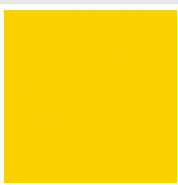
**Avorio - RAL 1013**

Cod. 02



**Beige Cream**

Cod. 26



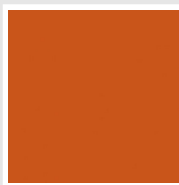
**Giallo - RAL 1021**

Cod. 04



**Giallo Melone -  
RAL 1028**

Cod. E7



**Arancio - RAL 2004**

Cod. 17



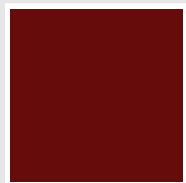
**Marrone Ruggine -  
RAL 8004**

Cod. E1



**Marrone - RAL 8017**

Cod. 09



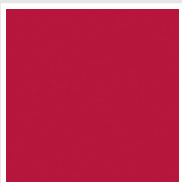
**Amaranto - RAL  
3003**

Cod. 06



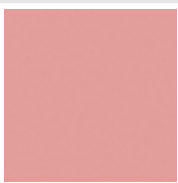
**Rosso - RAL 3000**

Cod. 05



**Rosso Fragola -  
RAL 3018**

Cod. Y3



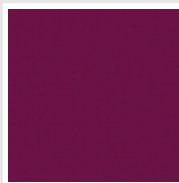
**Rosa - RAL 3015**

Cod. R2



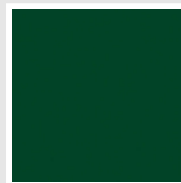
**Lilla Bluastro - RAL  
4005**

Cod. R3



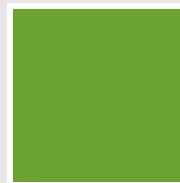
**Porpora Traffico -  
RAL 4006**

Cod. R6



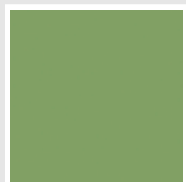
**Verde Bosco - RAL  
6005**

Cod. 19



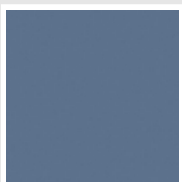
**Verde Erba - RAL  
6018**

Cod. N3



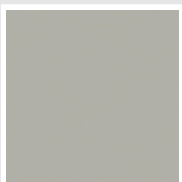
**Verde Salvia - RAL  
6021**

Cod. E6



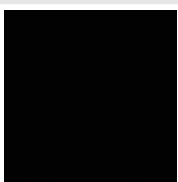
**Blu Pastello - RAL  
5024**

Cod. G7



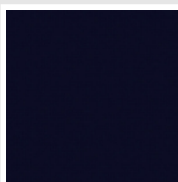
**Grigio Manhattan**

Cod. 03



**Nero - RAL 9005**

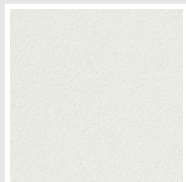
Cod. 10



**Deep Blue**

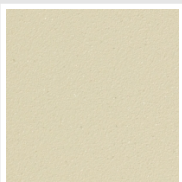
Cod. 2F

### SPECIAL



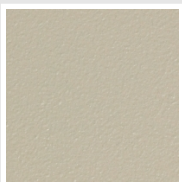
**Bianco Perla**

Cod. 16



**Quartz 1**

Cod. 1C



**Sablé**

Cod. Y4



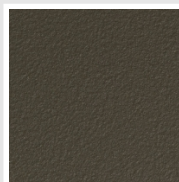
**Quartz 2**

Cod. 2C



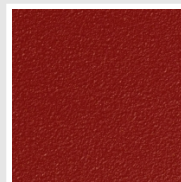
**Sunstone**

Cod. 2D



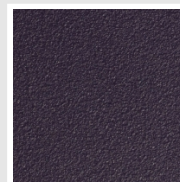
**Bruno Tabacco**

Cod. 1B



**Flame Red**

Cod. 7D



**Purple Blue**

Cod. 1D



**Azurite 3**  
Cod. 6C

**Grigio Medio**  
Cod. 4D

**Grigio Titanio  
Metallizzato - RAL  
9023**  
Cod. L3

**Grigio Perla**  
Cod. L6

**Nero Grafite**  
Cod. 18

**Grigio Quarzo**  
Cod. 31

**Nero Satinato**  
Cod. 30

**Bianco Opaco**  
Cod. J8



**Nero Opaco**  
Cod. K1

**Agave**  
Cod. 9N

**Blu Baltico**  
Cod. 1P

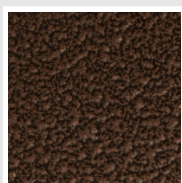
**Ghiaccio**  
Cod. 3P

**Blu Colomba  
Opaco - RAL 5014**  
Cod. 4P

**Grigio Chiaro  
Opaco**  
Cod. 8N

**Grigio Cenere - Ral  
7021**  
Cod. G1

**Grigio Martellato**  
Cod. 32



**Rame Martellato**  
Cod. J4

## RAL



**Altri colori RAL (previa fattibilità)**  
Cod. ALTRIRAL

I colori rappresentati in questa cartella non sono da considerarsi impegnativi. I diversi processi tecnologici di verniciatura ed i materiali utilizzati per la realizzazione possono non avere una perfetta corrispondenza cromatica con il prodotto consegnato. L'azienda Irsap si riserva la facoltà di apportare in qualsiasi momento tutte le modifiche necessarie per il miglioramento del prodotto.