

# Arpa18 Orizzontale

Arpa18 Orizzontale rappresenta una moderna estetica che si integra in qualsiasi ambiente. Lo stile di Arpa si completa nella modulare funzionalità.



Arpa18, orizzontale, 20 elementi, altezza 364 mm, larghezza 2020 mm, Quartz 1

## Caratteristiche costruttive

collettori a sezione circolare diametro 30 mm  
elementi in lamiera d'acciaio diametro 18 mm  
filettature estremità collettore 1/2" Gas destra  
pressione di esercizio massima ammessa: 10 bar  
temperatura di esercizio massima ammessa: 95°C

## Dotazione di serie

sistemi di fissaggio al muro con viti e tasselli  
tappo cieco da 1/2" con copri tappo  
valvola sfiato da 1/2"

## Certificazioni



## Plus



## Dati tecnici

| Modello | Profondità (mm) | Lunghezza (mm) | Interasse (mm) | Peso (kg) | Capacità (lt) |
|---------|-----------------|----------------|----------------|-----------|---------------|
| 520     | 46,0            | 520            | 470            | 0,30      | 0,13          |
| 550     | 46,0            | 550            | 500            | 0,32      | 0,13          |
| 650     | 46,0            | 650            | 600            | 0,36      | 0,15          |
| 670     | 46,0            | 670            | 620            | 0,37      | 0,16          |
| 700     | 46,0            | 700            | 650            | 0,39      | 0,16          |
| 750     | 46,0            | 750            | 700            | 0,41      | 0,17          |
| 850     | 46,0            | 850            | 800            | 0,45      | 0,19          |
| 870     | 46,0            | 870            | 820            | 0,46      | 0,20          |
| 920     | 46,0            | 920            | 870            | 0,49      | 0,20          |
| 1220    | 46,0            | 1220           | 1170           | 0,62      | 0,26          |
| 1520    | 46,0            | 1520           | 1470           | 0,76      | 0,32          |
| 1820    | 46,0            | 1820           | 1770           | 0,90      | 0,38          |
| 2020    | 46,0            | 2020           | 1970           | 0,99      | 0,42          |
| 2220    | 46,0            | 2220           | 2170           | 1,08      | 0,46          |
| 2520    | 46,0            | 2520           | 2470           | 1,22      | 0,52          |

(\*) Grazie alle elevate prestazioni dei radiatori Arpa18 Orizzontale, il  $\Delta t$  ideale per la progettazione a bassa temperatura è 30°C

Per  $\Delta t$  diversi da 50°C utilizzare la formula:  $Q=Q_n (\Delta t / 50)^n$

### Dotazione di serie

- sistemi di fissaggio al muro con viti e tasselli • tappo cieco da 1/2" con copri tappo • valvola sfiato da 1/2"

Numero Elementi      4    6    8    10    12    14    16    18    20    22    24    26    28    30    32    34    36    38    40    42    44    46    48    50    52

Resa a mt lineare Kcal/h a  $\Delta t=50^\circ\text{C}$  214,1272,4330,7389,1447,4505,7564,0622,4682,8741,1796,4851,8904,3 954,9 1.003,51.050,31.095,41.138,61.180,11.234,61.289,01.343,51.397,91.452,41.506

Resa a mt lineare Watt a  $\Delta t=50^\circ\text{C}$  248,9316,7384,6452,4520,2588,0655,9723,7793,9861,8926,1990,51.051,51.110,31.166,91.221,31.273,71.323,91.372,21.435,51.498,81.562,21.625,51.688,81.752

|  |   |       |       |       |       |   |
|--|---|-------|-------|-------|-------|---|
| Resa a mt lineare Watt a $\Delta t=40^{\circ}\text{C}$ | 187,3238,6289,9341,3392,8445,1497,6550,2606,0660,5712,5765,2811,1 | 855,2 | 897,5 | 935,2 | 971,0 | 1.004,81.036,91.096,01.144,71.193,51.244,41.295,51.341, |
| Resa a mt lineare Watt a $\Delta t=30^{\circ}\text{C}$ | 129,9165,5201,3237,3273,4310,8348,5386,5427,9468,7508,2548,6580,4 | 610,8 | 639,8 | 662,9 | 684,4 | 704,2 722,6 773,9 808,7 843,6 881,8 920,5 950,6         |
| Resa a mt lineare Watt a $\Delta t=20^{\circ}\text{C}$ | 77,5 98,9 120,5142,2164,1187,3211,0234,9261,9289,0315,6343,3362,2 | 380,1 | 397,0 | 408,1 | 418,0 | 426,7 434,3 474,0 495,6 517,3 542,7 568,6 585,0         |
| Esponente modifica                                     | 1,2741,2701,2671,2631,2591,2481,2381,2281,2101,1921,1751,1571,163 | 1,170 | 1,177 | 1,196 | 1,216 | 1,236 1,256 1,209 1,208 1,206 1,197 1,188 1,197         |

## Rese a batteria

| Altezza (mm) | N° Elementi | 520                   | 550 | 650 | 670  | 700  | 750  | 850  | 870  | 920  | 1220 | 1520 | 1820 | 2020 | 2220 | 2520 |
|--------------|-------------|-----------------------|-----|-----|------|------|------|------|------|------|------|------|------|------|------|------|
| 109          | 4           | $Watt = 129$<br>$W =$ | 137 | 162 | 167  | 174  | 187  | 212  | 217  | 229  | 304  | 378  | 453  | 503  | 553  | 627  |
| 163          | 6           | $Watt = 165$<br>$W =$ | 174 | 206 | 212  | 222  | 238  | 269  | 276  | 291  | 386  | 481  | 576  | 640  | 703  | 798  |
| 217          | 8           | $Watt = 200$<br>$W =$ | 212 | 250 | 258  | 269  | 288  | 327  | 335  | 354  | 469  | 585  | 700  | 777  | 854  | 969  |
| 271          | 10          | $Watt = 235$<br>$W =$ | 249 | 294 | 303  | 317  | 339  | 385  | 394  | 416  | 552  | 688  | 823  | 914  | 1004 | 1140 |
| 325          | 12          | $Watt = 271$<br>$W =$ | 286 | 338 | 349  | 364  | 390  | 442  | 453  | 479  | 635  | 791  | 947  | 1051 | 1155 | 1311 |
| 379          | 14          | $Watt = 306$<br>$W =$ | 323 | 382 | 394  | 412  | 441  | 500  | 512  | 541  | 717  | 894  | 1070 | 1188 | 1305 | 1482 |
| 433          | 16          | $Watt = 341$<br>$W =$ | 361 | 426 | 439  | 459  | 492  | 557  | 571  | 603  | 800  | 997  | 1194 | 1325 | 1456 | 1653 |
| 487          | 18          | $Watt = 376$<br>$W =$ | 398 | 470 | 485  | 507  | 543  | 615  | 630  | 666  | 883  | 1100 | 1317 | 1462 | 1607 | 1824 |
| 541          | 20          | $Watt = 413$<br>$W =$ | 437 | 516 | 532  | 556  | 595  | 675  | 691  | 730  | 969  | 1207 | 1445 | 1604 | 1762 | 2001 |
| 595          | 22          | $Watt = 448$<br>$W =$ | 474 | 560 | 577  | 603  | 646  | 733  | 750  | 793  | 1051 | 1310 | 1568 | 1741 | 1913 | 2172 |
| 649          | 24          | $Watt = 482$<br>$W =$ | 509 | 602 | 620  | 648  | 695  | 787  | 806  | 852  | 1130 | 1408 | 1686 | 1871 | 2056 | 2334 |
| 703          | 26          | $Watt = 515$<br>$W =$ | 545 | 644 | 664  | 693  | 743  | 842  | 862  | 911  | 1208 | 1506 | 1803 | 2001 | 2199 | 2496 |
| 757          | 28          | $Watt = 547$<br>$W =$ | 578 | 683 | 705  | 736  | 789  | 894  | 915  | 967  | 1283 | 1598 | 1914 | 2124 | 2334 | 2650 |
| 811          | 30          | $Watt = 577$<br>$W =$ | 611 | 722 | 744  | 777  | 833  | 944  | 966  | 1021 | 1355 | 1688 | 2021 | 2243 | 2465 | 2798 |
| 865          | 32          | $Watt = 607$<br>$W =$ | 642 | 758 | 782  | 817  | 875  | 992  | 1015 | 1074 | 1424 | 1774 | 2124 | 2357 | 2591 | 2941 |
| 919          | 34          | $Watt = 635$<br>$W =$ | 672 | 794 | 818  | 855  | 916  | 1038 | 1063 | 1124 | 1490 | 1856 | 2223 | 2467 | 2711 | 3078 |
| 973          | 36          | $Watt = 662$<br>$W =$ | 701 | 828 | 853  | 892  | 955  | 1083 | 1108 | 1172 | 1554 | 1936 | 2318 | 2573 | 2828 | 3210 |
| 1027         | 38          | $Watt = 688$<br>$W =$ | 728 | 861 | 887  | 927  | 993  | 1125 | 1152 | 1218 | 1615 | 2012 | 2409 | 2674 | 2939 | 3336 |
| 1081         | 40          | $Watt = 714$<br>$W =$ | 755 | 892 | 919  | 961  | 1029 | 1166 | 1194 | 1262 | 1674 | 2086 | 2497 | 2772 | 3046 |      |
| 1135         | 42          | $Watt = 746$<br>$W =$ | 790 | 933 | 962  | 1005 | 1077 | 1220 | 1249 | 1321 | 1751 | 2182 | 2613 | 2900 | 3187 |      |
| 1189         | 44          | $Watt = 779$<br>$W =$ | 824 | 974 | 1004 | 1049 | 1124 | 1274 | 1304 | 1379 | 1829 | 2278 | 2728 | 3028 | 3327 |      |

| Altezza (mm) | N° Elementi |               | 520  | 550  | 650  | 670  | 700  | 750  | 850  | 870  | 920  | 1220 | 1520 | 1820 | 2020 | 2220 | 2520 |
|--------------|-------------|---------------|------|------|------|------|------|------|------|------|------|------|------|------|------|------|------|
| 1243         | 46          | Watt =<br>W = | 812  | 859  | 1015 | 1047 | 1094 | 1172 | 1328 | 1359 | 1437 | 1906 | 2375 | 2843 | 3156 |      |      |
| 1297         | 48          | Watt =<br>W = | 845  | 894  | 1057 | 1089 | 1138 | 1219 | 1382 | 1414 | 1495 | 1983 | 2471 | 2958 | 3284 |      |      |
| 1351         | 50          | Watt =<br>W = | 878  | 929  | 1098 | 1132 | 1182 | 1267 | 1435 | 1469 | 1554 | 2060 | 2567 | 3074 |      |      |      |
| 1405         | 52          | Watt =<br>W = | 911  | 964  | 1139 | 1174 | 1227 | 1314 | 1489 | 1524 | 1612 | 2138 | 2663 | 3189 |      |      |      |
| 1459         | 54          | Watt =<br>W = | 944  | 999  | 1180 | 1216 | 1271 | 1362 | 1543 | 1579 | 1670 | 2215 | 2760 |      |      |      |      |
| 1513         | 56          | Watt =<br>W = | 977  | 1033 | 1221 | 1259 | 1315 | 1409 | 1597 | 1635 | 1728 | 2292 | 2856 |      |      |      |      |
| 1567         | 58          | Watt =<br>W = | 1010 | 1068 | 1262 | 1301 | 1359 | 1457 | 1651 | 1690 | 1787 | 2369 | 2952 |      |      |      |      |
| 1621         | 60          | Watt =<br>W = | 1043 | 1103 | 1304 | 1344 | 1404 | 1504 | 1705 | 1745 | 1845 | 2447 | 3048 |      |      |      |      |

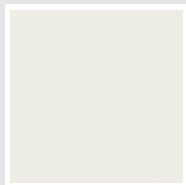
## Colori e finiture

### STANDARD



**Bianco Standard**  
Cod. 01

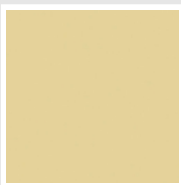
### CLASSIC



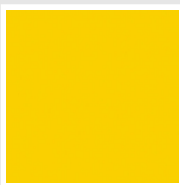
**Bianco Edelweiss**  
Cod. 34



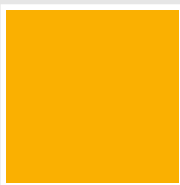
**Avorio - RAL 1013**  
Cod. 02



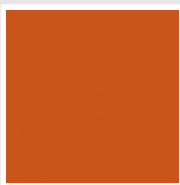
**Beige Cream**  
Cod. 26



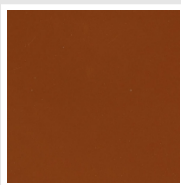
**Giallo - RAL 1021**  
Cod. 04



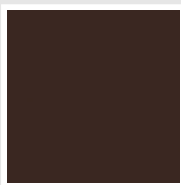
**Giallo Melone -  
RAL 1028**  
Cod. E7



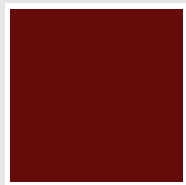
**Arancio - RAL 2004**  
Cod. 17



**Marrone Ruggine -  
RAL 8004**  
Cod. E1



**Marrone - RAL 8017**  
Cod. 09



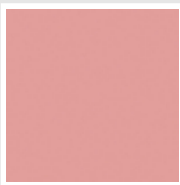
**Amaranto - RAL  
3003**  
Cod. 06



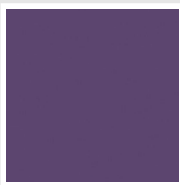
**Rosso - RAL 3000**  
Cod. 05



**Rosso Fragola -  
RAL 3018**  
Cod. Y3



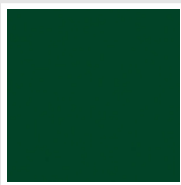
**Rosa - RAL 3015**  
Cod. R2



**Lilla Bluastro - RAL  
4005**  
Cod. R3



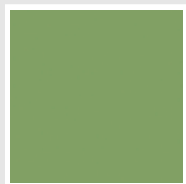
**Porpora Traffico -  
RAL 4006**  
Cod. R6



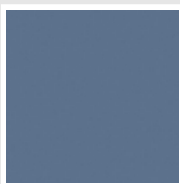
**Verde Bosco - RAL  
6005**  
Cod. 19



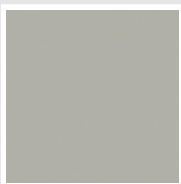
**Verde Erba - RAL  
6018**  
Cod. N3



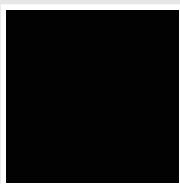
**Verde Salvia - RAL  
6021**  
Cod. E6



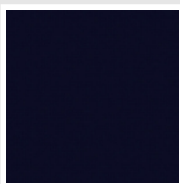
**Blu Pastello - RAL  
5024**  
Cod. G7



**Grigio Manhattan**  
Cod. 03

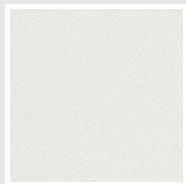


**Nero - RAL 9005**  
Cod. 10



**Deep Blue**  
Cod. 2F

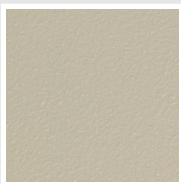
### SPECIAL



**Bianco Perla**  
Cod. 16



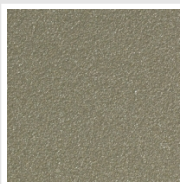
**Quartz 1**  
Cod. 1C



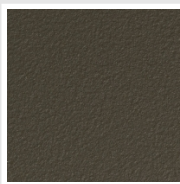
**Sablé**  
Cod. Y4



**Quartz 2**  
Cod. 2C



**Sunstone**  
Cod. 2D



**Bruno Tabacco**  
Cod. 1B



**Flame Red**  
Cod. 7D



**Purple Blue**  
Cod. 1D



**Azurite 3**  
Cod. 6C

**Grigio Medio**  
Cod. 4D

**Grigio Titanio  
Metallizzato - RAL  
9023**  
Cod. L3

**Grigio Perla**  
Cod. L6

**Nero Grafite**  
Cod. 18

**Grigio Quarzo**  
Cod. 31

**Nero Satinato**  
Cod. 30

**Bianco Opaco**  
Cod. J8



**Nero Opaco**  
Cod. K1

**Agave**  
Cod. 9N

**Blu Baltico**  
Cod. 1P

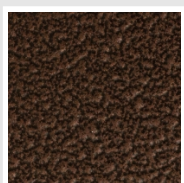
**Ghiaccio**  
Cod. 3P

**Blu Colomba  
Opaco - RAL 5014**  
Cod. 4P

**Grigio Chiaro  
Opaco**  
Cod. 8N

**Grigio Cenere - Ral  
7021**  
Cod. G1

**Grigio Martellato**  
Cod. 32



**Rame Martellato**  
Cod. J4

## RAL



**Altri colori RAL (previa fattibilità)**  
Cod. ALTRIRAL

I colori rappresentati in questa cartella non sono da considerarsi impegnativi. I diversi processi tecnologici di verniciatura ed i materiali utilizzati per la realizzazione possono non avere una perfetta corrispondenza cromatica con il prodotto consegnato. L'azienda Irsap si riserva la facoltà di apportare in qualsiasi momento tutte le modifiche necessarie per il miglioramento del prodotto.