

Piano2 Orizzontale è la versione a doppio rango di Piano Orizzontale, adatta per gli ambienti che richiedono una maggior resa calorica. Radiatore molto flessibile; disponibile in 9 altezze, da 4 a 30 elementi.



Piano 2 Orizzontale, 10 elementi, altezza 568 mm, larghezza 1820 mm, Agave

Caratteristiche costruttive

collettori a sezione circolare diametro 30 mm
elementi in lamiera d'acciaio di sezione rettangolare 50x10 mm
filettature estremità collettore 1/2" gas destra
pressione di esercizio massima ammessa: 4 bar
temperatura di esercizio massima ammessa: 95°C

Dotazione di serie

sistemi di fissaggio al muro con viti e tasselli
tappo cieco da 1/2" con copri tappo
valvola sfiato da 1/2"

Certificazioni



Plus



Dati tecnici

Modello	Profondità (mm)	Lunghezza (mm)	Interasse (mm)	Peso (kg)	Capacità (lt)
520	46,0	520	470	1,16	0,43
700	46,0	700	650	1,52	0,55
920	46,0	920	870	1,96	0,71
1220	46,0	1220	1170	2,61	0,91
1520	46,0	1520	1470	3,16	1,13
1820	46,0	1820	1770	3,76	1,34
2020	46,0	2020	1970	4,16	1,48
2220	46,0	2220	2170	4,61	1,61
2520	46,0	2520	2470	5,16	1,82

(*) Grazie alle elevate prestazioni dei radiatori Piano2 Orizzontale, il Δt ideale per la progettazione a bassa temperatura è 30°C

Per Δt diversi da 50°C utilizzare la formula: $Q=Q_n (\Delta t / 50)^n$

Dotazione di serie

- sistemi di fissaggio al muro con viti e tasselli • tappo cieco da 1/2" con copri tappo • valvola sfiato da 1/2"

Numero Elementi	4	6	8	10	12	14	16	18	20	22	24	26	28	30
Resa a mt lineare Kcal/h a $\Delta t=50^\circ\text{C}$	372,6	521,4	660,9	793,2	919,6	1.040,9	1.157,6	1.270,2	1.379,1	1.515,5	1.586,7	1.685,8	1.782,0	1.875,5
Resa a mt lineare Watt a $\Delta t=50^\circ\text{C}$	433,3	606,3	768,5	922,3	1.069,3	1.210,3	1.346,0	1.477,0	1.603,6	1.762,2	1.845,0	1.960,2	2.072,1	2.180,8
Resa a mt lineare Watt a $\Delta t=40^\circ\text{C}$	329,2	459,7	586,9	709,4	822,7	931,6	1.036,5	1.137,9	1.236,0	1.358,5	1.423,0	1.512,5	1.599,5	1.684,2
Resa a mt lineare Watt a $\Delta t=30^\circ\text{C}$	230,9	321,8	414,6	505,8	586,7	664,8	740,0	812,9	883,5	971,4	1.018,0	1.082,7	1.145,7	1.207,0
Resa a mt lineare Watt a $\Delta t=20^\circ\text{C}$	140,1	194,6	254,1	314,0	364,4	413,2	460,3	506,0	550,4	605,4	635,0	675,9	715,8	754,7
Esponente modifica	1,232	1,240	1,208	1,176	1,175	1,173	1,171	1,169	1,167	1,166	1,164	1,162	1,160	1,158

Rese a batteria

Altezza (mm)	N° Elementi	520	700	920	1220	1520	1820	2020	2220	2520
232	4	Watt = W = 225	303	399	529	659	789	875	962	1092
344	6	Watt = W = 315	424	558	740	922	1103	1225	1346	1528
456	8	Watt = W = 400	538	707	938	1168	1399	1552	1706	1937
568	10	Watt = W = 480	646	849	1125	1402	1679	1863	2048	2324
680	12	Watt = W = 556	749	984	1305	1625	1946	2160	2374	2695
792	14	Watt = W = 629	847	1113	1477	1840	2203	2445	2687	3050
904	16	Watt = W = 700	942	1238	1642	2046	2450	2719	2988	3392
1016	18	Watt = W = 768	1034	1359	1802	2245	2688	2984	3279	
1128	20	Watt = W = 834	1123	1475	1956	2437	2919			
1240	22	Watt = W = 916	1234	1621	2150	2679				
1352	24	Watt = W = 959	1292	1697	2251	2804				
1464	26	Watt = W = 1019	1372	1803	2391					
1576	28	Watt = W = 1077	1450	1906	2528					
1688	30	Watt = W = 1134	1527	2006	2661					

Colori e finiture

STANDARD



Bianco Standard
Cod. 01

CLASSIC



Bianco Edelweiss
Cod. 34



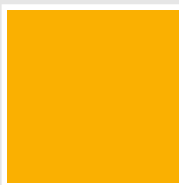
Avorio - RAL 1013
Cod. 02



Beige Cream
Cod. 26



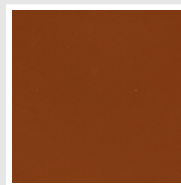
Giallo - RAL 1021
Cod. 04



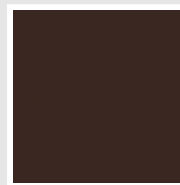
**Giallo Melone -
RAL 1028**
Cod. E7



Arancio - RAL 2004
Cod. 17



**Marrone Ruggine -
RAL 8004**
Cod. E1



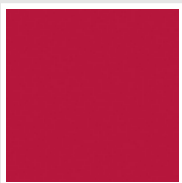
Marrone - RAL 8017
Cod. 09



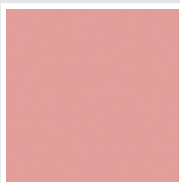
**Amaranto - RAL
3003**
Cod. 06



Rosso - RAL 3000
Cod. 05



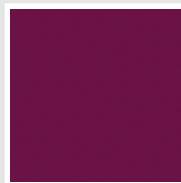
**Rosso Fragola -
RAL 3018**
Cod. Y3



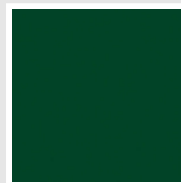
Rosa - RAL 3015
Cod. R2



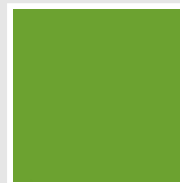
**Lilla Bluastro - RAL
4005**
Cod. R3



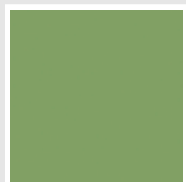
**Porpora Traffico -
RAL 4006**
Cod. R6



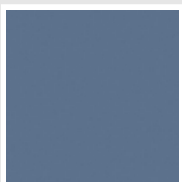
**Verde Bosco - RAL
6005**
Cod. 19



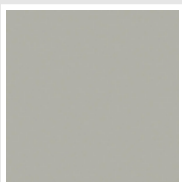
**Verde Erba - RAL
6018**
Cod. N3



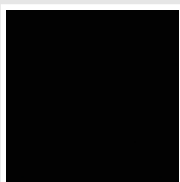
**Verde Salvia - RAL
6021**
Cod. E6



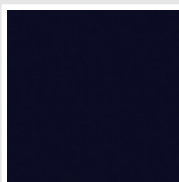
**Blu Pastello - RAL
5024**
Cod. G7



Grigio Manhattan
Cod. 03

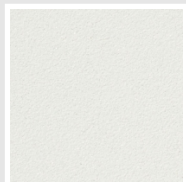


Nero - RAL 9005
Cod. 10

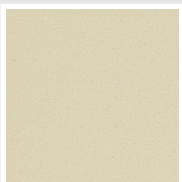


Deep Blue
Cod. 2F

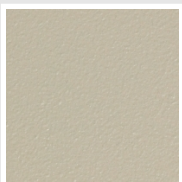
SPECIAL



Bianco Perla
Cod. 16



Quartz 1
Cod. 1C



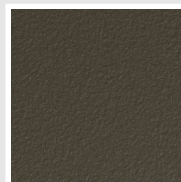
Sablé
Cod. Y4



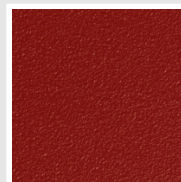
Quartz 2
Cod. 2C



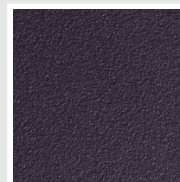
Sunstone
Cod. 2D



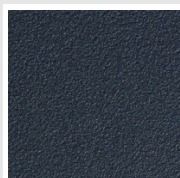
Bruno Tabacco
Cod. 1B



Flame Red
Cod. 7D



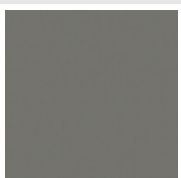
Purple Blue
Cod. 1D



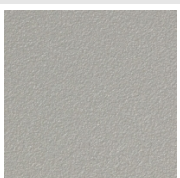
Azurite 3
Cod. 6C



Grigio Medio
Cod. 4D



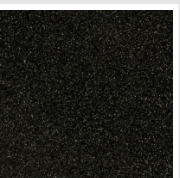
**Grigio Titanio
Metallizzato - RAL
9023**
Cod. L3



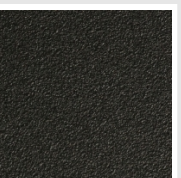
Grigio Perla
Cod. L6



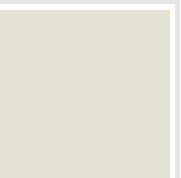
Nero Grafite
Cod. 18



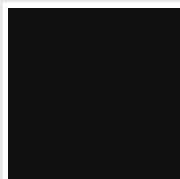
Grigio Quarzo
Cod. 31



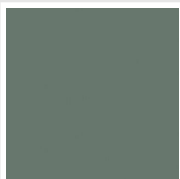
Nero Satinato
Cod. 30



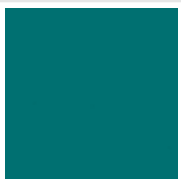
Bianco Opaco
Cod. J8



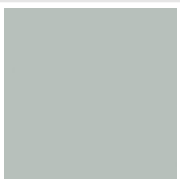
Nero Opaco
Cod. K1



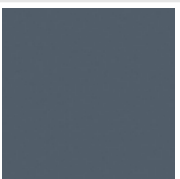
Agave
Cod. 9N



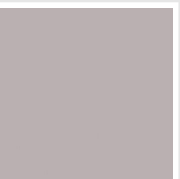
Blu Baltico
Cod. 1P



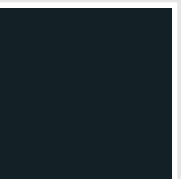
Ghiaccio
Cod. 3P



**Blu Colomba
Opaco - RAL 5014**
Cod. 4P



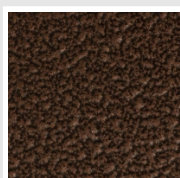
**Grigio Chiaro
Opaco**
Cod. 8N



**Grigio Cenere - Ral
7021**
Cod. G1



Grigio Martellato
Cod. 32



Rame Martellato
Cod. J4

RAL



Altri colori RAL (previa fattibilità)
Cod. ALTRIRAL

I colori rappresentati in questa cartella non sono da considerarsi impegnativi. I diversi processi tecnologici di verniciatura ed i materiali utilizzati per la realizzazione possono non avere una perfetta corrispondenza cromatica con il prodotto consegnato. L'azienda Irsap si riserva la facoltà di apportare in qualsiasi momento tutte le modifiche necessarie per il miglioramento del prodotto.