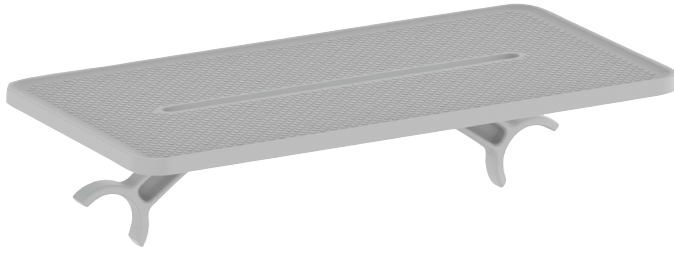


E24315



Collection: MÉTRO

Finish*:



NF - Sans finition



BL - Noir mat

Main features:



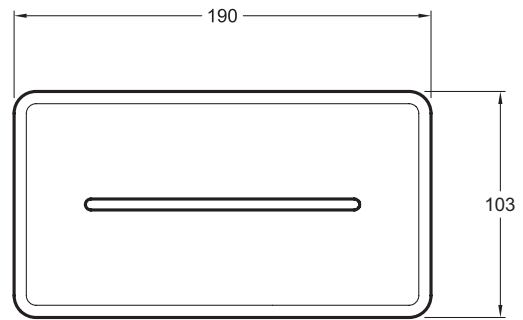
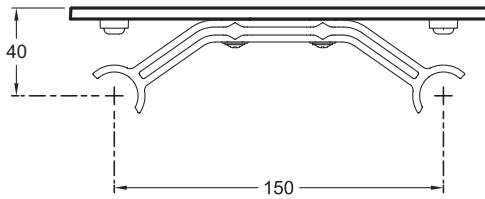
Features

- DIMENSIONS: 10.30 x 4.80 cm
- MATERIAL: 54
- TYPE: 8
- WEIGHT: 0.3 kg
- INSTALLATION TYPE: 36

Optional products

- E21767: Single-lever thermostatic wall-mount shower mixer
- E21768: Single-lever thermostatic wall-mount bath/shower mixer

Technical drawing



Product Specification: Anti-slip shelf. E24315. Collection: MÉTRO. DIMENSIONS: 10.30 x 4.80 cm. WEIGHT: 0.3 kg. MATERIAL: 54. INSTALLATION TYPE: 36. TYPE: 8.