

Fat escutcheon w/ key hole - steel

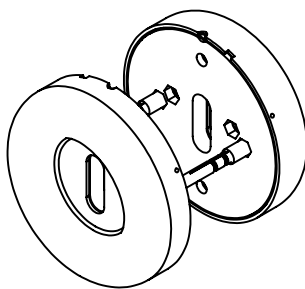
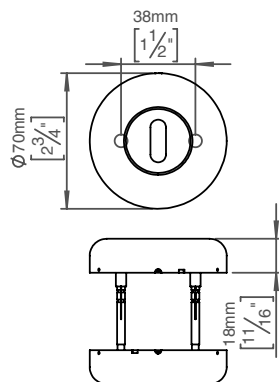
Tom Dixon collection

Product Ø70x17mm, cc 38/27mm, satin

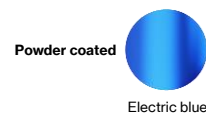
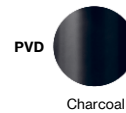
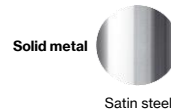
Tender text

FAT escutcheon w/key hole, Ø70x17mm, cc 38/27mm, satin finish. The FAT collection is a series of architectural hardware pieces designed by English industrial designer Tom Dixon. Manufactured in the highest quality marine grade, AISI 316 stainless steel, protecting against high levels of corrosion. W: 70mmxH: 70mmxD: 17.5mm. 20-year warranty.

Product specification Dimensions: 70x70x17,5mm.
Material: stainless steel AISI 316
Surface finish: satin grain 320, crafted by hand
[20-year warranty \(5 years for coated items\)](#)



Available finishes



Spare parts/ accessories

P 80 - Sectioned bolt M4x110mm with bush

Mounting

<https://dline.com/mounting-instructions/>

17 sets per box

Product care

d line products are produced in the highest quality marine grade AISI 316 stainless steel. To sustain the unique d line finish please follow the below instructions:

- Wash down the surfaces using soapy water or mild detergent
- Always thoroughly rinse off with clean water
- To complete the cleaning procedure dry/polish the surface with a soft dry cloth

Please do not use scouring powder, steel wool, chloride based detergents or other aggressive cleaning products as these may damage the surface.

If spots or corrosion appear on the surface it is not due to the stainless steel quality, but to impurities in the environment, aggressive conditions or improper or insufficient cleaning.