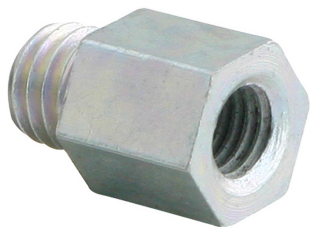


# BIS Переходники

создание резьбового соединения

(K 55 35)



6473XXX



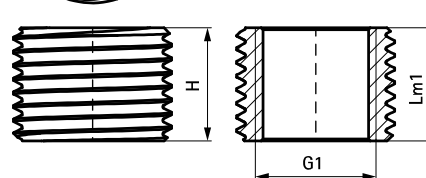
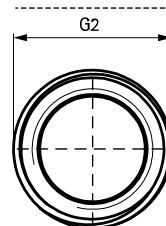
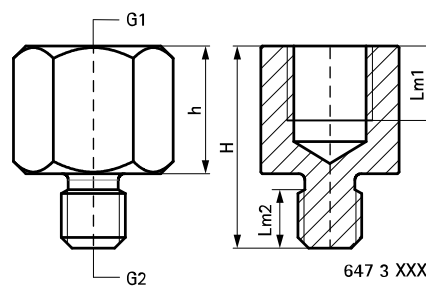
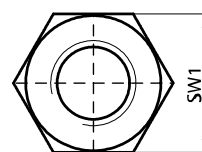
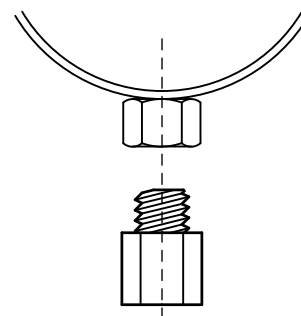
6473521  
6484321

## Свойства и преимущества

- для увеличения или уменьшения соединительной резьбы хомутов и т.д.
- материал: сталь
- оцинковка: электролитическая
- испытаны согласно требованиям противопожарной безопасности MLAR/LAR/RbALei

| Арт. №  | H    | h    | G1   | G2   | Lm1  | Lm2  | SW1 | Уп.мин | Уп.макс |
|---------|------|------|------|------|------|------|-----|--------|---------|
|         | (мм) | (мм) |      |      |      |      |     |        |         |
| 6473008 | 19   | 12   | M8   | M6   | 7,0  | 5,5  | 13  | 100    | 1 000   |
| 6473206 | 20   | 12   | M6   | M8   | 7,0  | 6,0  | 13  | 100    | 2 000   |
| 6473210 | 23   | 15   | M10  | M8   | 9,0  | 6,0  | 13  | 100    | 2 000   |
| 6473212 | 23   | 15   | M12  | M8   | 8,0  | 6,0  | 17  | 50     | -       |
| 6473221 | 30   | 22   | G1/2 | M8   | 13,0 | 8,0  | 27  | 50     | 250     |
| 6473306 | 21   | 13   | M6   | M10  | 7,0  | 6,0  | 13  | 100    | -       |
| 6473308 | 21   | 13   | M8   | M10  | 7,0  | 6,0  | 13  | 100    | 2 000   |
| 6473312 | 25   | 15   | M12  | M10  | 8,0  | 8,0  | 17  | 50     | 500     |
| 6473316 | 32   | 22   | M16  | M10  | 13,0 | 8,0  | 24  | 25     | -       |
| 6473321 | 31   | 21   | G1/2 | M10  | 12,0 | 8,0  | 27  | 25     | 250     |
| 6473408 | 23   | 13   | M8   | M12  | 7,0  | 7,5  | 13  | 50     | 1 000   |
| 6473410 | 23   | 13   | M10  | M12  | 8,0  | 7,5  | 13  | 50     | 1 000   |
| 6473416 | 32   | 22   | M16  | M12  | 11,0 | 8,0  | 24  | 50     | -       |
| 6473510 | 32   | 18   | M10  | M16  | 9,0  | 11,0 | 19  | 50     | -       |
| 6473512 | 32   | 18   | M12  | M16  | 10,0 | 11,0 | 19  | 50     | -       |
| 6473421 | 26   | 11   | M10  | G1/2 | 9,0  | 13,0 | 27  | 25     | 250     |
| 6473521 | 15   | -    | M16  | G1/2 | 15,0 | -    | -   | 50     | 250     |
| 6473621 | 25   | 15   | G3/4 | G1/2 | 12,0 | 7,0  | -   | 50     | 700     |
| 6473721 | 32   | 20   | G1   | G1/2 | 17,0 | 9,0  | -   | 10     | 100     |

От M10 испытаны на огнестойкость.



647 3 521 /  
648 4 321