

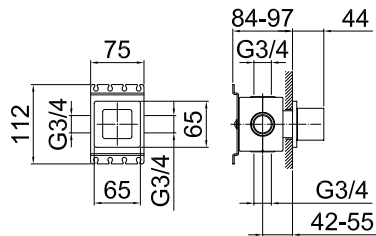


FANTINI

RUBINETTI

MINT

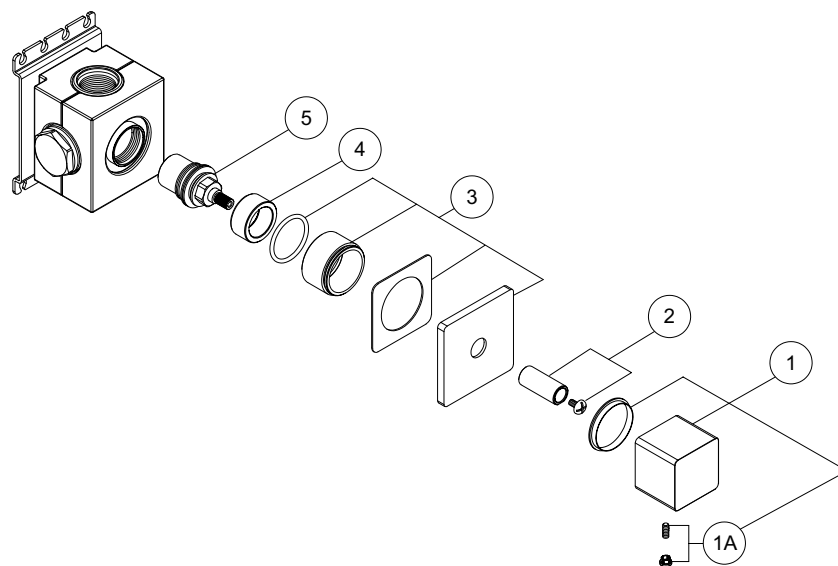
Rubinetto di arresto ad incasso 3/4" Art. D291A+F291B / 3/4" Built-in stop valve Art. D291A+F291B /
Robinet d'arrêt à encastrer en 3/4" Art. D291A+F291B



N°	Codice / Code	Descrizione / Description / Désignation
1	90 00 8772	Maniglia completa per vitone per Art. F291B Complete handle for valve for Art. F291B Manette complete pour tête pour Art. F291B
1A	90 00 9533	Confezione fissaggio per maniglia vitone Art. 3903S Fixing kit for valve handle Art. 3903S Kit de fixation pour manette du robinet pour Art. 3903S
2	90 00 8799	Adattatore broccia per Art. F291B Mint Adapter broach Art. F291B Mint Adaptateur broche Art. F291B Mint
3	90 00 8798	Piastra completa per rubinetto d'arresto per Art. F291B Mint Plate for the shut-off valve for Art. F291B Mint Plaque pour robinet d'arrêt pour Art. F291B Mint
4	90 00 9941	Collarino sottomaniglia per Art. 6001S/6002S/6003S Collar under lever for ceramic valve of the Art. 6001S/6002S/6003S Gorgerin sous manette pour tête céramique de l'Art. 6001S/6002S/6003S
5	90 00 9493	Vitone ceramico 90 3/4" per rub. arresto per Art. 3903S 90° ceramic valve 3/4" for stop tap for Art. 3903S Tête céramique 90° 3/4" pour robinet d'arrêt Art. 3903S

MINT

Rubinetto di arresto ad incasso 3/4" Art. D291A+F291B / 3/4" Built-in stop valve Art. D291A+F291B /
Robinet d'arrêt à encastrer en 3/4" Art. D291A+F291B



USCITA PRIMARIA

Pressione - Pressure Pression	Portata - Flow rate Debit d'eau
0,5 bar	15 l/min
1 bar	24 l/min
2 bar	37 l/min
3 bar	48 l/min
4 bar	57 l/min
5 bar	65 l/min

Con uscita libera