

Relax Power è la rappresentazione di un design raffinato ed essenziale. Le sue linee squadrate e l'ampia gamma di colori ne fanno un oggetto che diventa un forte elemento di arredo, inserendosi con discrezione in qualsiasi tipologia di ambiente. Il portasalviette (opzionale) rende Relax adatto anche all'ambiente bagno. È fornito con l'innovativo sistema di collegamento idraulico a scomparsa installato direttamente in azienda.



Relax Power, verticale, altezza 1963 mm, larghezza 381 mm, Sablé

## Caratteristiche costruttive

piastra radiante

filettature passo 50 mm da M24 x 19

pressione di esercizio massima ammessa 10 bar

temperatura di esercizio massima ammessa 95°C

Il radiatore è già predisposto per l'inserimento della testa

termostatica opzionale

## Dotazione di serie

innovativo sistema di collegamento idraulico a scomparsa, installato sul prodotto, completo di raccordi per allacciamento con tubi rame (diametri 12, 14 e 15 mm) e multistrato (14 sp. 2 e 16 sp. 2)

sistema per fissaggio a muro

valvola sfiato

dima per l'installazione

## Certificazioni

CE 15-C -s2, d0  
EN442-1

## Plus



## Dati tecnici

Modello	Profondità (mm)	Altezza (mm)	Larghezza (mm)	Interasse (mm)	Peso (kg)	Capacità (lt)	Δt=50°C (kcal/h)	Δt=50°C (Watt)	Δt=40°C (Watt)	Δt=30°C (Watt)	Δt=20°C (Watt)	Esponente
688 x 1061	47,5	688	1061	45 / 100	19,30	4,30	606,0	705,0	538,0	380,0	232,0	1,212
688 x 1197	47,5	688	1197	45 / 100	21,70	4,80	685,0	796,0	607,0	429,0	262,0	1,212
688 x 1401	47,5	688	1401	45 / 100	25,30	5,70	801,0	931,0	710,0	501,0	307,0	1,212
688 x 653	47,5	688	653	45 / 100	12,10	2,60	373,0	434,0	331,0	234,0	143,0	1,212
688 x 857	47,5	688	857	45 / 100	15,70	3,40	490,0	570,0	435,0	307,0	188,0	1,212
868 x 1061	47,5	868	1061	45 / 100	24,30	5,30	763,0	887,0	673,0	471,0	285,0	1,239
868 x 1197	47,5	868	1197	45 / 100	27,30	6,00	861,0	1.001,0	759,0	532,0	322,0	1,239
868 x 1401	47,5	868	1401	45 / 100	31,90	7,10	1.007,0	1.171,0	888,0	622,0	376,0	1,239
868 x 653	47,5	868	653	45 / 100	15,20	3,20	470,0	546,0	414,0	290,0	175,0	1,239
868 x 857	47,5	868	857	45 / 100	19,70	4,30	617,0	717,0	544,0	381,0	230,0	1,239
1663 x 381	47,5	1663	381	45 / 100	17,00	3,40	523,0	608,0	458,0	318,0	190,0	1,270
1663 x 517	47,5	1663	517	45 / 100	22,90	4,70	710,0	825,0	621,0	431,0	258,0	1,270
1663 x 653	47,5	1663	653	45 / 100	28,80	6,10	896,0	1.042,0	785,0	545,0	325,0	1,270
1963 x 381	47,5	1963	381	45 / 100	20,00	4,00	598,0	695,0	522,0	361,0	215,0	1,282
1963 x 517	47,5	1963	517	45 / 100	26,90	5,50	811,0	943,0	708,0	490,0	291,0	1,282
1963 x 653	47,5	1963	653	45 / 100	33,90	7,10	1.024,0	1.191,0	895,0	619,0	368,0	1,282
2163 x 381	47,5	2163	381	45 / 100	21,90	4,40	634,0	737,0	555,0	385,0	230,0	1,273
2163 x 517	47,5	2163	517	45 / 100	29,60	6,10	861,0	1.001,0	753,0	522,0	312,0	1,273
2163 x 653	47,5	2163	653	45 / 100	37,30	7,80	1.087,0	1.264,0	951,0	660,0	394,0	1,273

(\*) Grazie alle elevate prestazioni delle piastre Relax Power, il Δt ideale per la progettazione a bassa temperatura è 30°C

Per Δt diversi da 50°C utilizzare la formula:  $Q=Q_n (\Delta t / 50)^n$

### Dotazione di serie

- innovativo sistema di collegamento idraulico a scomparsa, installato sul prodotto, completo di raccordi per allacciamento con tubi

rame (diametri 12, 14 e 15 mm) e multistrato (14 sp. 2 e 16 sp. 2) • sistema per fissaggio a muro • valvola sfiato • dima per l'installazione

## Colori e finiture

### STANDARD



**Bianco Standard**  
Cod. 01

### CLASSIC



**Bianco Edelweiss**  
Cod. 34



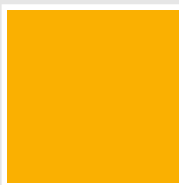
**Avorio - RAL 1013**  
Cod. 02



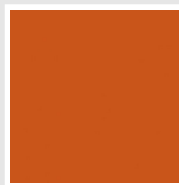
**Beige Cream**  
Cod. 26



**Giallo - RAL 1021**  
Cod. 04



**Giallo Melone -  
RAL 1028**  
Cod. E7



**Arancio - RAL 2004**  
Cod. 17



**Marrone Ruggine -  
RAL 8004**  
Cod. E1



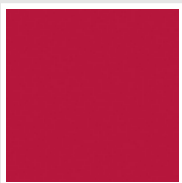
**Marrone - RAL 8017**  
Cod. 09



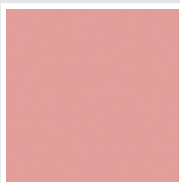
**Amaranto - RAL  
3003**  
Cod. 06



**Rosso - RAL 3000**  
Cod. 05



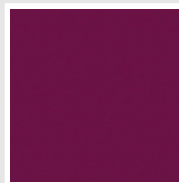
**Rosso Fragola -  
RAL 3018**  
Cod. Y3



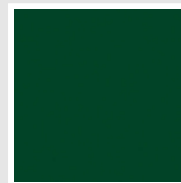
**Rosa - RAL 3015**  
Cod. R2



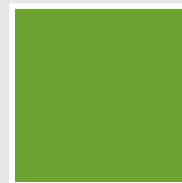
**Lilla Bluastro - RAL  
4005**  
Cod. R3



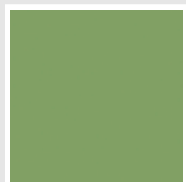
**Porpora Traffico -  
RAL 4006**  
Cod. R6



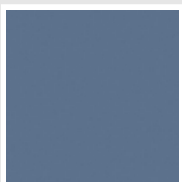
**Verde Bosco - RAL  
6005**  
Cod. 19



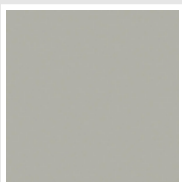
**Verde Erba - RAL  
6018**  
Cod. N3



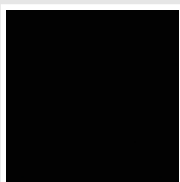
**Verde Salvia - RAL  
6021**  
Cod. E6



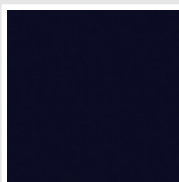
**Blu Pastello - RAL  
5024**  
Cod. G7



**Grigio Manhattan**  
Cod. 03

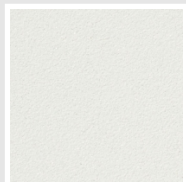


**Nero - RAL 9005**  
Cod. 10

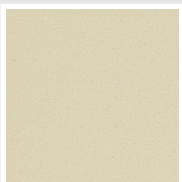


**Deep Blue**  
Cod. 2F

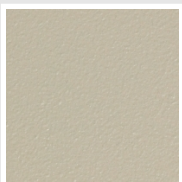
### SPECIAL



**Bianco Perla**  
Cod. 16



**Quartz 1**  
Cod. 1C



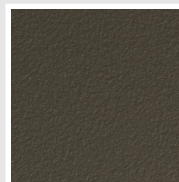
**Sablé**  
Cod. Y4



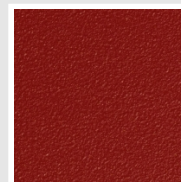
**Quartz 2**  
Cod. 2C



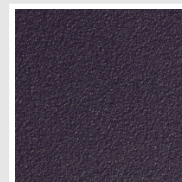
**Sunstone**  
Cod. 2D



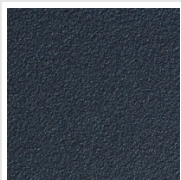
**Bruno Tabacco**  
Cod. 1B



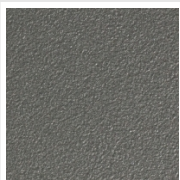
**Flame Red**  
Cod. 7D



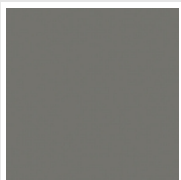
**Purple Blue**  
Cod. 1D



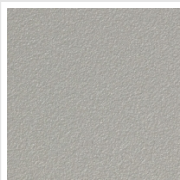
**Azurite 3**  
Cod. 6C



**Grigio Medio**  
Cod. 4D



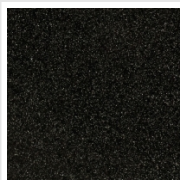
**Grigio Titanio  
Metallizzato - RAL  
9023**  
Cod. L3



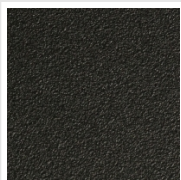
**Grigio Perla**  
Cod. L6



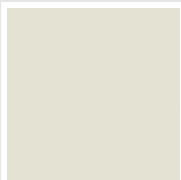
**Nero Grafite**  
Cod. 18



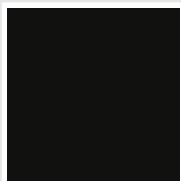
**Grigio Quarzo**  
Cod. 31



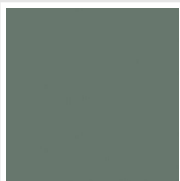
**Nero Satinato**  
Cod. 30



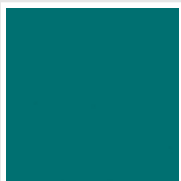
**Bianco Opaco**  
Cod. J8



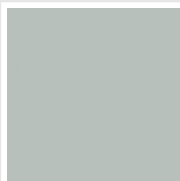
**Nero Opaco**  
Cod. K1



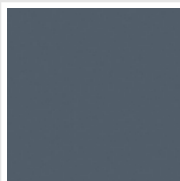
**Agave**  
Cod. 9N



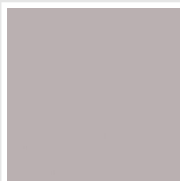
**Blu Baltico**  
Cod. 1P



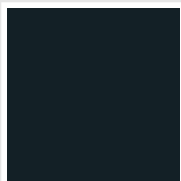
**Ghiaccio**  
Cod. 3P



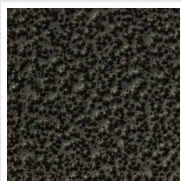
**Blu Colomba  
Opaco - RAL 5014**  
Cod. 4P



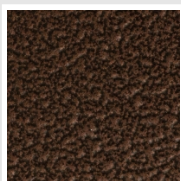
**Grigio Chiaro  
Opaco**  
Cod. 8N



**Grigio Cenere - Ral  
7021**  
Cod. G1

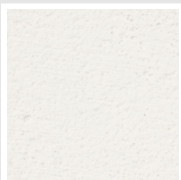


**Grigio Martellato**  
Cod. 32

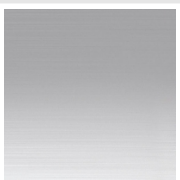


**Rame Martellato**  
Cod. J4

## FINISHES



**Wall Finished**  
Cod. 6B



**Satinato**  
Cod. AS



**Specchio**  
Cod. IS

## RAL



**Altri colori RAL (previa fattibilità)**  
Cod. ALTRIRAL

I colori rappresentati in questa cartella non sono da considerarsi impegnativi. I diversi processi tecnologici di verniciatura ed i materiali utilizzati per la realizzazione possono non avere una perfetta corrispondenza cromatica con il prodotto consegnato. L'azienda Irsap si riserva la facoltà di apportare in qualsiasi momento tutte le modifiche necessarie per il miglioramento del prodotto.