

Collection

HERMES ELLE

Article

HL397_3

Description

Four holes filler with overflow outlet connection, diverter and shower kit.

Box Dimensions

360x220x150 mm

Weight

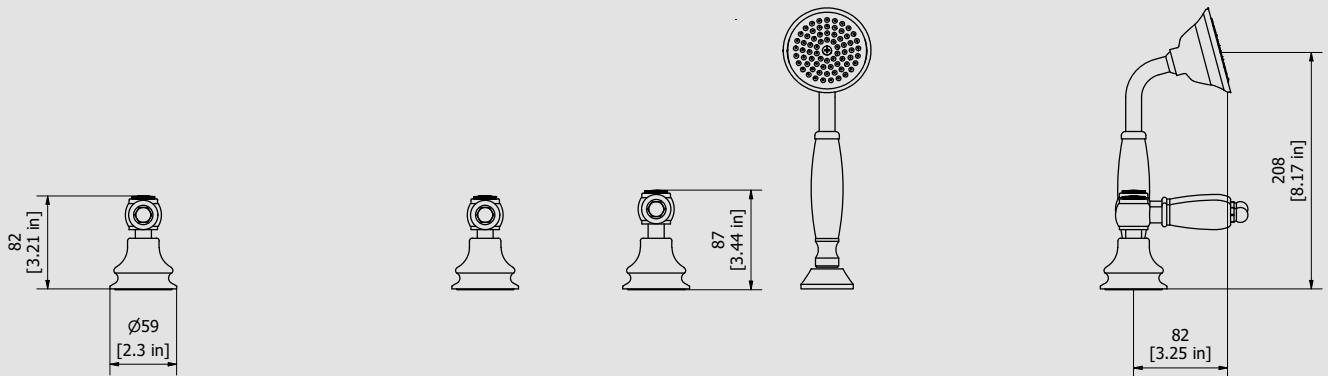
5 kg

Finishes

- **CC**
CHROME
- **PL**
PLATINUM
- **SS**
BRUSHED
NICKEL
- **ON**
NATURAL
BRASS
- **BO**
MATT
WHITE
- **NP**
MATT
BLACK
- **CF**
BLACK
CHROME
- **CS**
BRUSHED
BLACK
CHROME
- **II**
PALE
GOLD
- **IS**
BRUSHED
PALE GOLD
- **RS**
ROSE
GOLD
- **SR**
BRUSHED
ROSE GOLD
- **OO**
GOLD
- **OS**
BRUSHED
GOLD
- **RR**
ANTIQUÉ
COPPER
- **BB**
ANTIQUÉ
BRONZE



Dimensions



Cartridge

Ceramic headwork

Hoses

Flex inox G1/2" F G1/2" F

Aerator

-

Flow Rate (+/-10%)

1 BAR	2 BAR	3 BAR
19.7 l/m	27.5 l/m	33.1 l/m

Production

Main body is a single casted pieces.

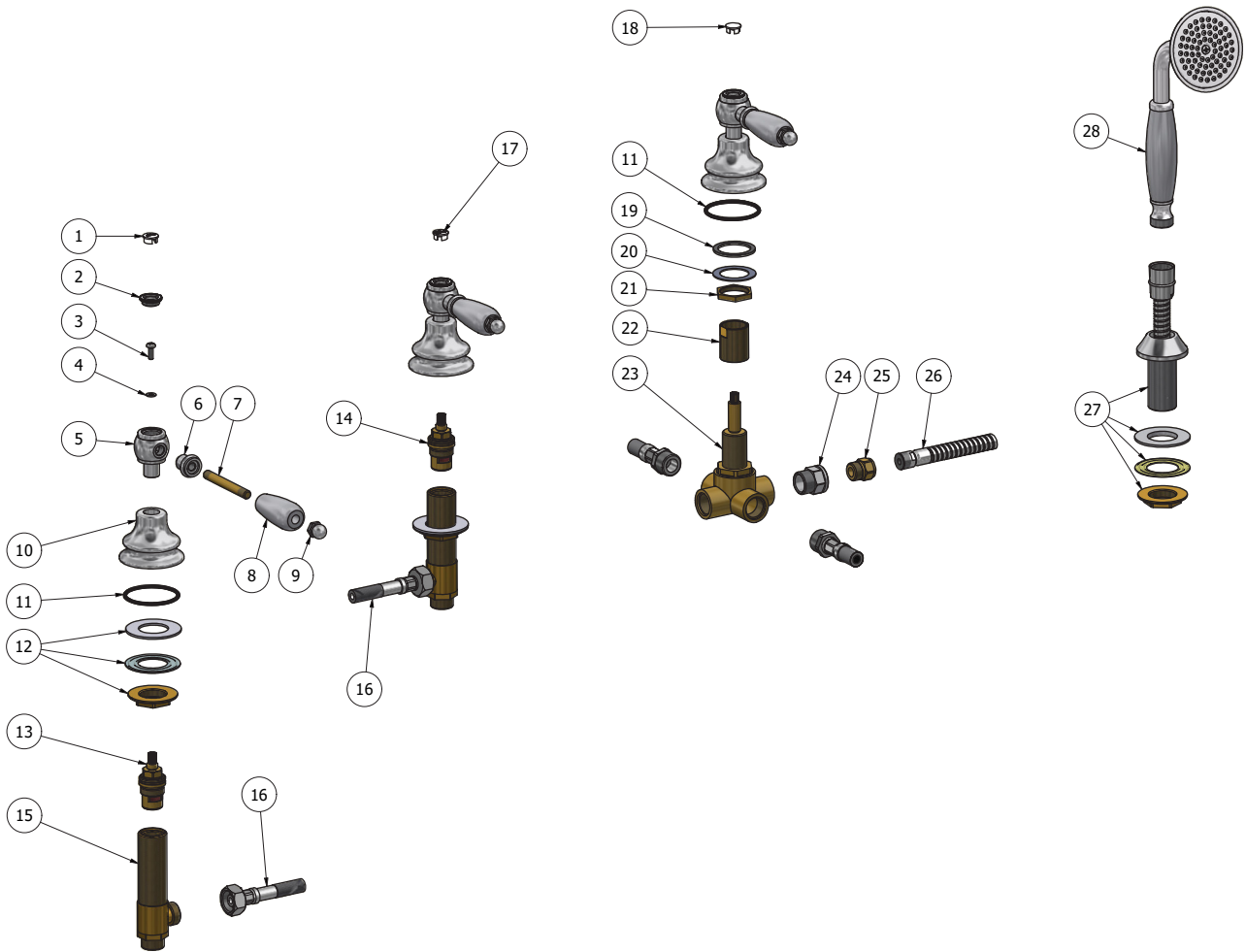
Material

BRASS
According to CuZn40Pb3 (CW614N)
Max Lead content: 2.5%



WE ARE IB

Parts list			
ITEMS	CODE	DESCRIPTION	QTA
1	AQ0013551	Handle's plug hot	1
2	AQ0009069	Cover Ø20 PLS	3
3	AQ0010985	Screw M4x12	3
4	AQ0010229	Washer Ø4	3
5	AC0003397	Lever Ø31.5 H42	3
6	AC0004500	Insert for handle	3
7	AT0004520	Rod M8x1 L68.5	3
8	AQ0004525	Grip handle	3
9	AC0004510	Domed nut	3
10	AC0007131	Bell Ø58.5 W26x19 H44.5	3
11	AQ0010096	OR 45.7x2.62 NBR 70 SH	3
12	AQ0010271	Fixing set	1
13	AQ0002135	Ceramic headwork 90° left	1
14	AQ0003930	Ceramic headwork 90° right	1
15	AS0002250	Washbasin upright W26x19	2
16	AQ0004760	Flex inox G1/2" F G1/2" F L300	2
17	AQ0013552	Handle's plug cold	1
18	AQ0013323	Neutral handle's plug	1
19	AQ0009716	Rubber packing 38x30x2	1
20	AQ0001650	Inox washer 39 x 26,5 x 1	1
21	AS0002010	Clamping nut 26 x 19 H5 CH30	1
22	AS0009995	Bush for headwork W26 x 19 W22 x 19	1
23	AQ0009455	Diverter 2 in 2 out	1
24	AQ0004860	Reduction G1/2" M G3/8" F	1
25	AS0009018	Nipples G3/8" M15x1 H21.2	1
26	AQ0009456	Flex inox G1/2" girevole L600	1
27	AQ0006630	Handshower's support with fixing set	1
28	AQ0008031	Shower	1





WARRANTY

All IB Rubinetterie SpA products are warranted for 10 years from the date of purchase, for the following cases:

- Defects of casting, porosity and chrome plating.
- Operating defects caused by incorrect fabrication.

The warranty provides for repair or replacement of products with fabrication defects recognized by our technical office. There is no other type of compensation anche the merchandise must be returned FOB our warehouse. The warranty only cover surface defects (scatches, dings, etc.) on fitting that have not been installed and used, returned in its original packaging with all components. O-ring, gasket seals and components subject to wear proportional to use are warranted for 2 years.

The warranty is void in the following cases:

Error installing and putting the product into service.

Deterioration of finished surfaces due to use of cleaning products containing acids or abrasive substances. Deterioration of surface with finishes other than chrome plating. Their durability is, in fact, dependent on the user's care and gentleness of use.

Deterioration of the fitting due incorrect installation.

Improper repairs and maintenance performed without the company's prior authorization.

The warranty from IB Rubinetterie SpA is not renewable.

Cleaning

We recommended cleaning the finish surfaces with water and soap, using a soft cloth.

Do not use detergents that contain hydrochloric acid or abrasive substances.

