

**E75759-4**



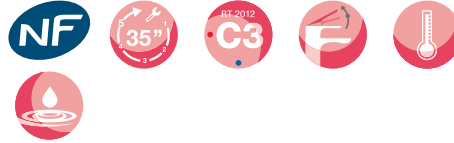
**Collection:** BRIVE

**Finish\*:**



CP - Chrome

**Main features:**



**Features**

- DIMENSIONS: 47 x 48.60 cm
- MATERIAL: 54
- NORMS AND REGULATION: NF: IA - ECAU: E0 C3 A2 U3 (Ge5) - ACS (Certificate of Sanitary Compliance): 15 ACC LY 474
- FLOW RATE: 11 l/mn
- SPOUT PROJECTION: 103
- MECHANISM: C3 water- and energy-saving cartridge
- SINGLE-LEVER TAP: SINGLE- LEVER MIXER
- MECHANISM GUARANTEE: 5 years

- WEIGHT: 1.4 kg
- INSTALLATION TYPE: 1 hole
- TYPE: Single-lever
- HEIGHT UNDER SPOUT: 136
- CONNECTION: With supply hoses
- WASTE : With waste
- INSTALLATION TYPE: 1 hole

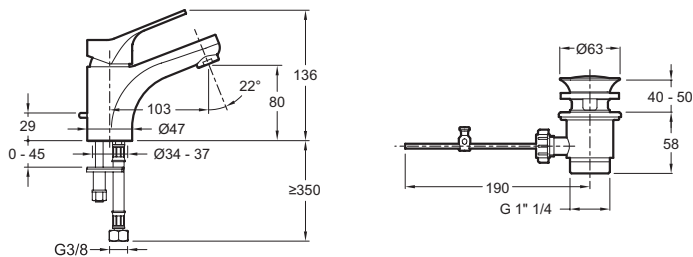
**Consumer benefits**

- WATER SAVING FEATURE: Sensitive flow control
- ENERGY EFFICIENCY: Cold water delivery with lever in centre position

**Installation benefits**

- INSTALLATION IN 35": product equipped with patented 5/35" system for fast, easy installation

**Technical drawing**



Product Specification: Single-lever basin mixer - patented 5/35" installation system. E75759-4. Collection: BRIVE. DIMENSIONS: 47 x 48.60 cm. WEIGHT: 1.4 kg. MATERIAL: 54. INSTALLATION TYPE: 1 hole. NORMS AND REGULATION: NF: IA - ECAU: E0 C3 A2 U3 (Ge5) - ACS (Certificate of Sanitary Compliance): 15 ACC LY 474. TYPE: Single-lever. FLOW RATE: 11 l/mn. HEIGHT UNDER SPOUT: 136. SPOUT PROJECTION: 103. CONNECTION: With supply hoses. MECHANISM: C3 water- and energy-saving cartridge. WASTE : With waste. SINGLE-LEVER TAP: SINGLE- LEVER MIXER. INSTALLATION TYPE: 1 hole. MECHANISM GUARANTEE: 5 years.

\*Due to possible variations in computer and printer calibrations, technical factors and certain finish characteristics, the colors you see may not accurately portray the actual colors and are provided as a guide only.