

Signaling units Ø 60

Harmony[®] XVGU monolithic tower lights

Catalog

July 2016



How can you fit a 6000-page catalog in your pocket?

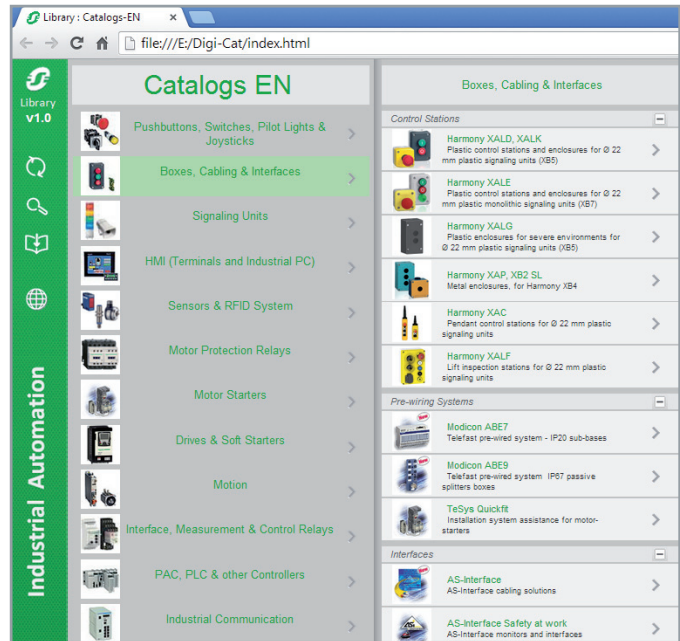
Schneider Electric provides you with the complete set of industrial automation catalogs all on a handy USB key for PC or in an application for tablets



Digi-Cat, a handy USB key for PC



- > Convenient to carry
- > Always up-to-date
- > Environmentally friendly
- > Easy-to-share format



Contact your local representative to get your own Digi-Cat



e-Library, the app for tablets

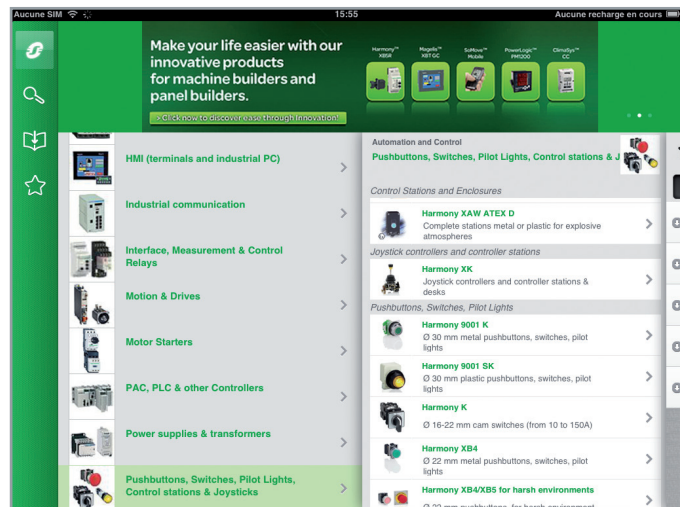
If you have an iPad®:

- > Go to the App Store and search for e-Library
- > or scan the QR code



If you have an Android tablet:

- > Go to the Google Play Store™ and search for eLibrary
- > or scan the QR code



General contents

Harmony® XVGU monolithic tower lights

Selection guide	<i>page 2</i>
■ Presentation	
□ Multi-color USB tower lights, Ø 60 mm	<i>page 6</i>
■ Description	<i>page 8</i>
■ References	
□ Pre-assembled tower lights	<i>page 8</i>
□ Accessories	<i>page 8</i>
□ Associations	<i>page 9</i>
■ Product reference index	<i>page 10</i>

Harmony type XV **Monolithic tower lights**



Type of products	Pre-assembled and pre-cabled USB tower lights	Pre-assembled/pre-cabled tower lights Variable composition tower lights for customer assembly of up to 4 units
Diameter	Ø 60 mm/2.362 in.	Ø 60 mm/2.362 in.
Degree of protection conforming to IEC 60529	IP 54	IP 53 and IP 42 (base mounting) IP 23 (direct aluminium tube mounting, aluminium tube mounting and "L" bracket) IP 53 and IP 42 (aluminium tube mounting and fixing plate) IP 40 (aluminium tube mounting and foldable bracket)
Type of signalling	Steady Flashing "Flash" Sound	Yes Yes – –
Light sources	Incandescent bulb LED bulb Integral LED "Flash" discharge tube Halogen bulb	With buzzer (volume control and alarm type can be set with HMI) – – Yes – –
Colors of illuminated units	Multi-color LEDs (many possible combinations can be set with HMI) <input type="checkbox"/> Red <input type="checkbox"/> Orange <input type="checkbox"/> Green <input type="checkbox"/> Blue	With buzzer – – Yes – – <input type="checkbox"/> Red <input type="checkbox"/> Green <input type="checkbox"/> Amber <input type="checkbox"/> Blue
Connection	USB power cable: – 300 mm/11.81 in. for tube mounting – 400 mm/15.75 in. for direct mounting	Flying leads, length 500 to 560 mm/19.68 to 22.05 in. for tube mounting according to model. Length 900 mm/35.43 in. for base mounting.
Support panel drilling or cut-out	Mounting on support tube with fixing plate: 4 x Ø 6 mm/0.236 in. Direct mounting on horizontal support: 3 x Ø 5 mm/0.197 in.	Base mounting: 3 x Ø 5 mm/0.197 in. Direct aluminium tube mounting: Ø20/0.787 in. Aluminium tube mounting and "L" bracket: 2 x Ø9/0.354 in. Aluminium tube mounting and fixing plate: 4 x Ø6/0.236 in. Aluminium tube mounting and foldable bracket: 4 x Ø6/0.236 in.
Type references	XVGU	XVG

Monolithic tower lights



Type of products	Pre-assembled and pre-cabled tower lights	Pre-assembled and pre-cabled tower lights	Pre-assembled and pre-cabled tower lights
Diameter	Ø 40 mm/1.575 in.	Ø 60 mm/2.36 in.	Ø 100 mm/3.937 in.
Degree of protection conforming to IEC 60529	IP 54 (flat surface installation) IP 23 (vertical surface installation)	IP 54 (flat surface installation) IP 23 (vertical surface installation)	IP 54 (flat surface installation)
Type of signalling	Yes Yes – –	Yes Yes – –	Yes Yes – –
Light sources	With buzzer – – Yes – –	With buzzer – – Yes – –	With siren or buzzer – – Yes – –
Colors of illuminated units	<input type="checkbox"/> Red <input type="checkbox"/> Orange <input type="checkbox"/> Green <input type="checkbox"/> Blue <input type="checkbox"/> Clear	<input type="checkbox"/> Red <input type="checkbox"/> Orange <input type="checkbox"/> Green <input type="checkbox"/> Blue <input type="checkbox"/> Clear	<input type="checkbox"/> Red <input type="checkbox"/> Orange <input type="checkbox"/> Green <input type="checkbox"/> Blue <input type="checkbox"/> Clear
Connection	Flying leads, length 450 mm/17.71 in. to 900 mm/35.43 in. according to model	Flying leads, length 450 mm/17.71 in. to 850 mm/33.46 in. according to model	Flying leads, length 500 mm/19.68 in.
Support panel drilling or cut-out	Mounting on support tube with bracket: 2 x Ø 9 mm/0.354 in. Direct mounting on horizontal support: 3 x Ø 5 mm/0.20 in. Other mounting possibilities with accessories	Mounting on support tube with bracket: 2 x Ø 11 mm/0.43 in. Direct mounting on horizontal support: 3 x Ø 5 mm/0.197 in. Other mounting possibilities with accessories	Direct mounting on horizontal support: – 3 x Ø 6 mm/0.236 in. (without siren) – 3 x Ø 7 mm/0.276 in. (with siren) Other mounting possibilities with accessories
Type references	XVC4	XVC6	XVC1

Harmony type XV **Modular tower lights**



Type of products	Illuminated beacons Variable composition tower lights for customer assembly of up to 5 units	Tower lights for customer assembly of up to 5 units.
Diameter	Ø 70 mm/2.756 in.	Ø 60 mm/2.362 in.
Degree of protection conforming to IEC 60529	IP 65 (mounted on fixing base XVBZ0●) IP 66 (mounted on base unit)	IP 65 for illuminated units IP 54 for audible units IP 55 for flexible mounting unit
Type of signalling	Steady Flashing "Flash" Sound	Yes Yes Yes Yes (buzzer or editable voice)
Light sources	Incandescent bulb LED bulb Integral LED "Flash" discharge tube Halogen bulb	– – Yes – –
Colors of illuminated units	<input type="checkbox"/> Green <input type="checkbox"/> Red <input type="checkbox"/> Orange <input type="checkbox"/> Blue <input type="checkbox"/> Clear <input type="checkbox"/> Yellow	<input type="checkbox"/> Green <input type="checkbox"/> Red <input type="checkbox"/> Orange <input type="checkbox"/> Blue <input type="checkbox"/> White <input type="checkbox"/> Yellow
Connection	Screw clamp terminals	Spring cage connection terminals
Support panel drilling or cut-out	Mounting on support tube: 4 x Ø 5.5 mm/0.217 in. or M5 Vertical mounting: 3 x Ø 5 mm/0.197 in. or M5 Direct mounting: 2 x Ø 4.5 mm/0.177 in. or M4	Mounting on support tube and adjustable support tube: 4 x Ø 6 mm/0.236 in. Flexible wall mounting: 3 x Ø 5 mm/0.197 in. Direct mounting: 2 x Ø 5 mm/0.197 in. 3 x Ø 5 mm/0.197 in. 4 x Ø 5 mm/0.197 in. Mounting on bracket: 2 x Ø 9 mm/0.354 in.
Type references	XVBL, XVBC	XVU

Modular tower lights **Rotating beacons** **Beacons** **Sound solutions**



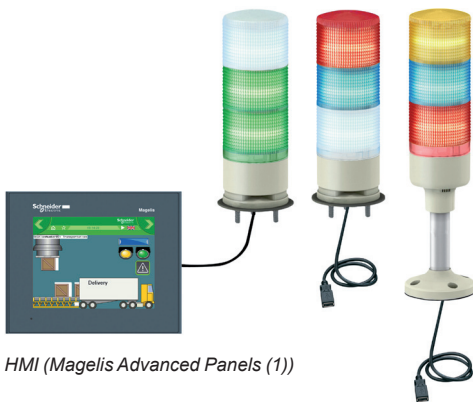
Type of products	Pre-assembled/pre-cabled tower lights Variable composition tower lights for customer assembly of up to 5 units	Pre-cabled rotating beacons Pre-cabled motor-less rotating/flashing beacons	Complete miniature beacons	Sirens and electronic alarms
Diameter	Ø 45 mm/1.772 in.	Ø 84 mm/3.31 in. to Ø 130 mm/5.12 in.	Ø 45 mm/1.772 in.	–
Degree of protection conforming to IEC 60529	IP 54 in vertical position (XVM with plastic fixing plate) IP 42 in horizontal position (XVM with metal bracket) IP 40 in other positions (all types of XVM tower lights)	Ø 84 mm/3.31 in. and Ø 106 mm/4.17 in.: IP 23 (IP 65 with accessory) Ø 120 mm/4.72 in.: IP 23 Ø 130 mm/5.12 in.: IP 66 and IP 67 (depending on voltage) Ø 100 mm/3.94 in.: IP 65 for upright position, IP 23 for sideways and inverted position	IP 40	IP 53 (sirens) IP 54 (electronic alarms) IP 65 (editable voice)
Type of signalling	Yes Yes Yes Yes	Yes – – Yes	Yes – Yes –	– – – Yes (editable voice)
Light sources	Yes Yes – –	– "Super Bright" – –	Yes – – Yes	– – – –
Colors of illuminated units	<input type="checkbox"/> Red <input type="checkbox"/> Green <input type="checkbox"/> Orange <input type="checkbox"/> Blue <input type="checkbox"/> Clear	<input type="checkbox"/> Red <input type="checkbox"/> Orange <input type="checkbox"/> Green <input type="checkbox"/> Blue	<input type="checkbox"/> Green <input type="checkbox"/> Red <input type="checkbox"/> Orange <input type="checkbox"/> Blue <input type="checkbox"/> Clear <input type="checkbox"/> Yellow	–
Connection	Flying leads, length 300 mm/11.81 in. or screw terminals	Flying leads, length 400 mm/15.75 in. (except XVR08: 500 mm/19.68 in.)	Screw clamp terminals	Screw clamp terminals (except XVS14: flying leads, length 500 mm/19.68 in.)
Support panel drilling or cut-out	Mounting on bracket: 2 x Ø 9 mm/0.354 in. Mounting on support tube: 4 x Ø 5.5 mm/0.217 in. or M5	Depending on model: - XVR08 (Ø 84 mm/3.31 in.): 3 x Ø 5 mm/0.197 in. - XVR10 (Ø 106 mm/4.17 in.): 3 x Ø 5 mm/0.197 in. - XVR12 (Ø 120 mm/4.72 in.): 3 x Ø 6 mm/0.236 in. - XVR13 (Ø 130 mm/5.12 in.): 3 x Ø 9 mm/0.354 in. - XVR13●●●L (Ø 130 mm/5.12 in.): 3 x Ø 7 mm/0.276 in. - XVR3 (Ø 100 mm/3.94 in.): 3 x Ø 6 mm/0.236 in.	3 x Ø 3.3 mm/0.130 in. or M3	3 x Ø 6.5 mm/0.256 in.
Type references	XVM	XVR	XVDLS	XVS

Signaling Units

Monolithic tower lights

Harmony type XVGU Ø 60

Multi-color USB tower lights



HMI (Magelis Advanced Panels (1))

Presentation

The monolithic USB tower lights of the Harmony® XVGU range are designed to support HMI (Magelis™ Advanced Panels (1)). These new tower lights with multi-color LEDs are unique and simple-to-use as the states and patterns are directly set and modified in the HMI application.

The XVGU tower lights provide long distance indication of the operating status or sequences of a machine or installation, both visually by means of illuminated signaling units with 360° visibility, and audibly by means of a buzzer.

- The tower light comes with a pre-assembled USB cable for simple wiring and easy integration with the Magelis Advanced Panels (1) (2).
- The tower light settings are selected from the Set screen of the HMI application at the time of integration.
 - The multi-color LEDs on the three levels can be set to numerous color combinations (red, orange, green or blue) for sophisticated signaling.
 - The 2-tone buzzer volume and alarm type (4 pre-recorded types) can be set easily.
- The tower lights allow to optimize your equipment: many customized configurations can be made from a sole product.
- The range involves Ø 60 mm/2.36 in. products and is therefore ideal for use in many activity sectors (textiles, packaging, baggage handling). It is also ideal for use with metal tools, plastic extrusion machines and assembly lines. This range is only for indoor applications.

XVGU tower lights are supplied:

- with 3 multi-color LEDs and a clear lens
- with a 2-tone buzzer
- with pre-assembled USB cable for easy connection (2)
- with USB cable clamp for firm connection
- fitted with one of the following mounting options:
 - direct base mounting (IP 54)
 - aluminium tube mounting and fixing plate (IP 54)

(1) Please refer to "USB tower lights compatible with Magelis Advanced Panels" table on page 9.

(2) For extension, use either the Schneider Electric USB cable (BMXXCAUSBH018) or a third-party USB Type A/mini B cable of maximum length 4 m/13.12 ft.

Signaling Units

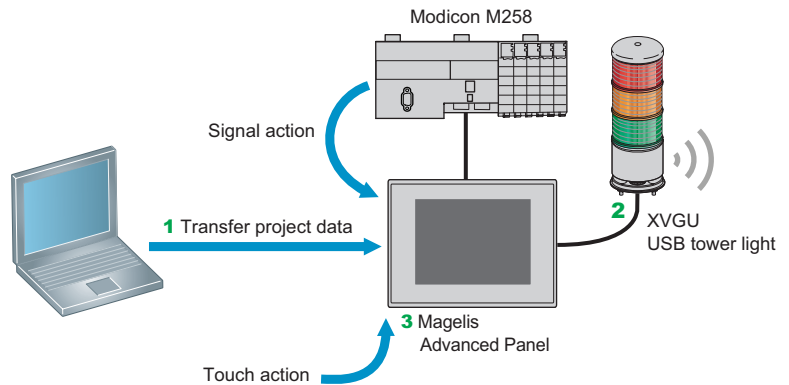
Monolithic tower lights

Harmony type XVGU Ø 60

Multi-color USB tower lights

Presentation (continued)

The following illustrates the integration of XVGU tower lights with the Magelis Advanced Panels (1).



1 The HMI application is created on a computer using the Vijeo designer HMI editor software (V6.1 Service pack 1 or higher). It is then downloaded to the Magelis Advanced Panel (1) via a USB cable for setting situation, color, and buzzer actions.

2 The tower light's pre-assembled USB cable is connected to the Magelis terminal for power supply and signal transmission (2).

3 The LED colors, flashing patterns, and buzzer tones are set and modified in the HMI Set screen.

Illuminated signaling

The light source consists of three multi-color LEDs (red, orange, green or blue) completed with a clear lens to provide an aesthetic look and reliable signaling (clear lenses help to avoid color reflectance in bright environments). When LEDs are not powered, the tower lights appear translucent. The LED colors can be set to many possible combinations of Red, Orange, Green, and Blue.

Audible signaling

The tower light is supplied with a 2-tone buzzer audible signaling unit, the volume of which can be adjusted up to 85 dB. This audible unit with 4 pre-recorded alarm types is located in the base of the tower light.

Environment

The XVGU tower lights are CE, CUL, GOST, UL 508, and RCM certified and conform to EN 61000-6-2 and EN 61000-6-4 standards.

Cabling

XVGU tower lights have pre-assembled USB cable with "Type A female" connector to attach to any standard USB mini B cable. A clamp is provided to prevent unintended removal or disconnection of the tower light from the Magelis Advanced Panel.

(1) Please refer to "USB tower lights compatible with Magelis Advanced Panels" table on page 9.

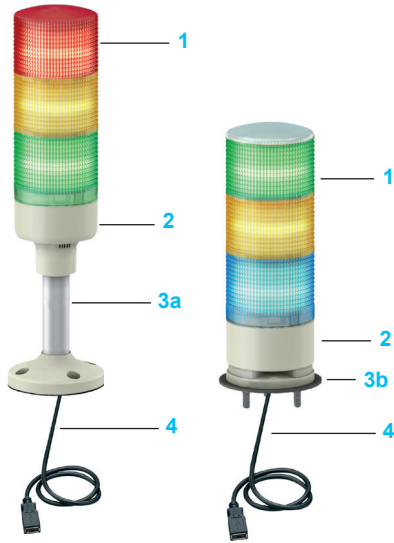
(2) For extension, use either the Schneider Electric USB cable (BMXXCAUSB018) or a third-party USB Type A/mini B cable of maximum length 4 m/13.12 ft.

Signaling Units

Monolithic tower lights

Harmony type XVGU Ø 60

Multi-color USB tower lights



Description

XVGU monolithic tower lights comprise an assembly of:

- Three layers of multi-color illuminated signaling units (red, orange, green, or blue) which are set in the HMI application. Each XVGU tower light is equipped with multi-color LEDs and a clear lens molded from a single piece of clear plastic. The colors are visible only when the LEDs are supplied with power (5 V DC).
- A base unit integrating the buzzer.
- A fixing base for mounting on a horizontal support:
 - a fixing base, comprising a 100 mm/3.94 in. aluminium support tube mounted on a fixing plate,
 - a fixing base fitted with 3 screws for direct mounting.
- A USB cable with "Type A female" connector, the projecting length being 300 mm/11.81 in. for tube mounting and 400 mm/15.75 in. for direct mounting models (1).

Pre-assembled tower lights 5 V, Ø 60 mm/2.36 in.

Description	Light source (included)	Degree of protection	Signaling colors	Reference	Weight kg/lb
With 100 mm/3.94 in. aluminium tube mounting and fixing plate					
Tower light with buzzer	Multi-color LED for various states and patterns	IP 54	Red/Orange/ Green/Blue	XVGU3SHAV	0.300/0.661

With direct base mounting

Tower light with buzzer	Multi-color LED for various states and patterns	IP 54	Red/Orange/ Green/Blue	XVGU3SWV	0.300/0.661
--------------------------------	---	-------	------------------------	-----------------	-------------

Accessories

Description	Utilization	Length m/ft	Reference	Weight kg/lb
Connection cable from PC to the terminal (USB Type A/mini B)	Cable for transferring screen data from a PC (USB Type A) to a HMI (USB Type mini B)	1.8/5.91	BMXXCAUSBH018	0.065/ .143

Note: Signaling colors correspond to a combination of 4 colors (Red, Orange, Green, and Blue) which can be set easily in the HMI application.

(1) For extension, use either the Schneider Electric USB cable (BMXXCAUSBH018) or a third-party USB Type A/mini B cable of maximum length 4 m/13.12 ft.

Signaling Units

Monolithic tower lights

Harmony type XVGU Ø 60

Multi-color USB tower lights

USB tower lights compatible with Magelis Advanced Panels and HMI Controllers



Type of tower light ¹	Type of Advanced Panels or HMI Controllers	Description	Reference ² (1)
XVGU3SWV XVGU3SHAV	Monochrome touch screen Standard Advanced Panels	Multifunction, 5.7" QVGA screen/Black and White/STN	XBTGT2120
		Multifunction, 5.7" QVGA screen/Blue mode/STN	XBTGT2130
	Color touch screen Standard Advanced Panels	Multifunction, 5.7" QVGA screen/STN	XBTGT2220
		Multifunction, 5.7" QVGA screen/TFT	XBTGT2330
		Multifunction, 5.7" VGA screen/TFT	XBTGT2430
		Multifunction, 5.7" QVGA screen/High brightness TFT	XBTGT2930
		Multifunction, 7.5" VGA screen/STN	XBTGT4230
		Multifunction, 7.5" VGA screen/TFT	XBTGT4330
		Multifunction, 7.5" VGA screen/TFT	XBTGT4340
		Multifunction, 10.4" VGA screen/TFT	XBTGT5330
		Multifunction, 10.4" VGA screen/TFT	XBTGT5340
		Multifunction, 10.4" SVGA screen/TFT	XBTGT5430
		Multifunction, 12.1" SVGA screen/TFT	XBTGT6330
		Multifunction, 12.1" SVGA screen/TFT	XBTGT6340
		Multifunction, 15" XGA screen/TFT	XBTGT7340
		Keypad/touch screen Standard Advanced Panels	Multifunction, 5.7" screen/Black and white/STN
	Multifunction, 5.7" screen/Color/TFT		XBTGK2330
	Multifunction, 10.4" screen/Color/TFT		XBTGK5330
	Junction box	Junction Box for XBTGH2 (without Fieldbus)	XBTZGJBOX
	Optimum Advanced Panels	3.5" QVGA screen/TFT	HMIGTO1300
		3.5" QVGA screen/TFT	HMIGTO1310
		5.7" QVGA screen/TFT	HMIGTO2300
		5.7" QVGA screen/TFT	HMIGTO2310
		5.7" QVGA screen/Stainless steel	HMIGTO2315
		7.0" WVGA screen/TFT	HMIGTO3510
		7.5" VGA screen/TFT	HMIGTO4310
		10.4" VGA screen/TFT	HMIGTO5310
		10.4" VGA screen/Stainless steel	HMIGTO5315
		12.1" SVGA screen/TFT	HMIGTO6310
	12.1" SVGA screen/Stainless steel	HMIGTO6315	
	HMI Controllers	3.5" screen QVGA color/TFT	HMISCU6A5
		3.5" screen QVGA color/TFT	HMISCU6B5
		5.7" screen QVGA color/TFT	HMISCU8A5
		5.7" screen QVGA color/TFT	HMISCU8B5
		5.7" screen/Color/STN	XBTGC2230U
		5.7" screen/Color/STN	XBTGC2230T

Note: For more information on Magelis Advanced Panels and HMI Controllers, please refer to our website www.schneider-electric.com.

(1) The minimum required Vijeo designer software version is Vjd 6.1 Service pack 1.

B

BMXXCAUSBH018	8
---------------	---

H

HMIGTO1300	9
HMIGTO1310	9
HMIGTO2300	9
HMIGTO2310	9
HMIGTO2315	9
HMIGTO3510	9
HMIGTO4310	9
HMIGTO5310	9
HMIGTO5315	9
HMIGTO6310	9
HMIGTO6315	9
HMISCU6A5	9
HMISCU6B5	9
HMISCU8A5	9
HMISCU8B5	9

X

XBTGC2230T	9
XBTGC2230U	9
XBTGK2120	9
XBTGK2330	9
XBTGK5330	9
XBTGT2120	9
XBTGT2130	9
XBTGT2220	9
XBTGT2330	9
XBTGT2430	9
XBTGT2930	9
XBTGT4230	9
XBTGT4330	9
XBTGT4340	9
XBTGT5330	9
XBTGT5340	9
XBTGT5430	9
XBTGT6330	9
XBTGT6340	9
XBTGT7340	9
XBTZGJBOX	9
XVGU3SHAV	8 9
XVGU3SWV	8 9

Schneider Electric Industries SAS

Head Office
35, rue Joseph Monier
F-92500 Rueil-Malmaison
France

www.schneider-electric.com

The information provided in this documentation contains general descriptions and/or technical characteristics of the performance of the products contained herein. This documentation is not intended as a substitute for and is not to be used for determining suitability or reliability of these products for specific user applications. It is the duty of any such user or integrator to perform the appropriate and complete risk analysis, evaluation and testing of the products with respect to the relevant specific application or use thereof. Neither Schneider Electric nor any of its affiliates or subsidiaries shall be responsible or liable for misuse of the information contained herein.

Design: Schneider Electric
Photos: Schneider Electric