

TETRA applique collection

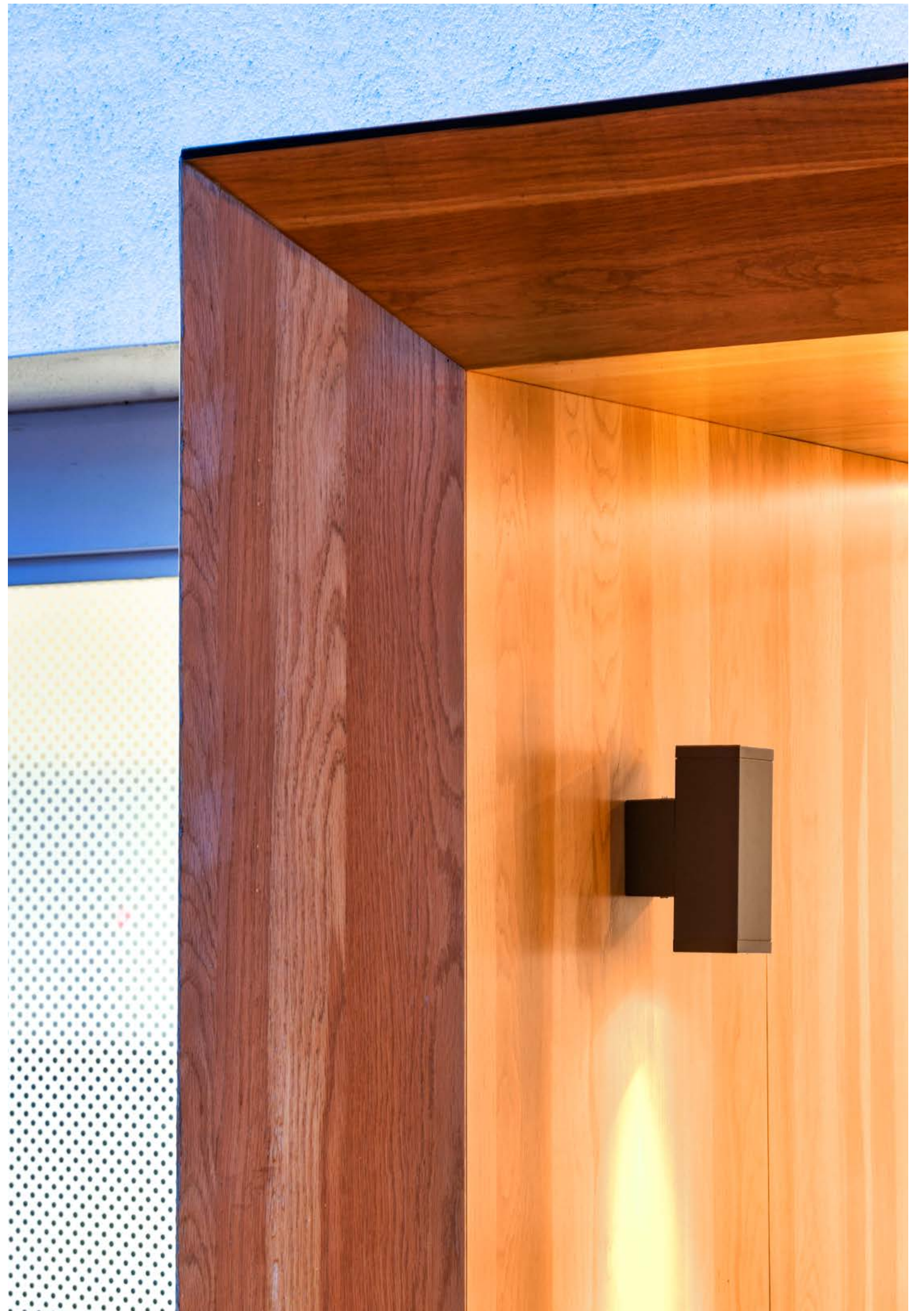


applique

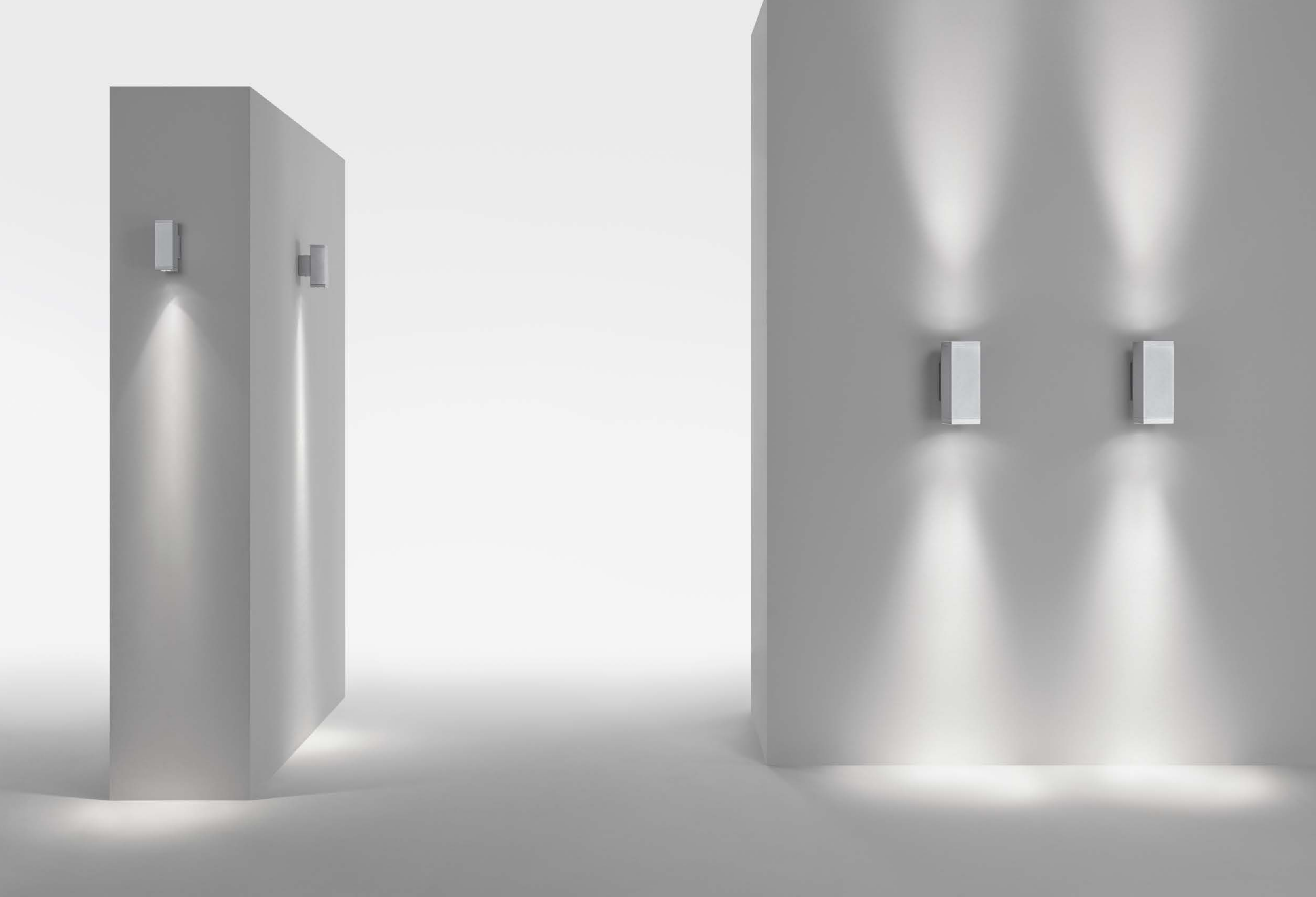


tetra 75 applique

Wall light derived from the square shape: Tetra is a series of devices for functional lighting, with a refined and elegant design. A parallelepiped to apply on the facade. The wall lights are available in versions with single and double emission: in this way, the perfect illumination of any point of the surface is guaranteed, both upwards and downwards. Tetra is perfect for porches and facades.



tetra 75 applique



collection

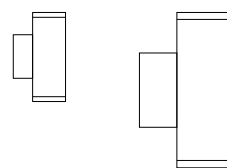


applique

IP65
IK 07

TETRA 75 applique
8 mm extra clear glass
75 x 75 x h. 210 mm

TETRA 140 applique
12 mm extra clear glass
140 x 140 x h. 380 mm



applique



TETRA 75
applique

75 x 75 x h. 210 mm



WHITE LED

3000K CRI>80
220-240V 0/50/60Hz ⊕

2700K / 4000K
available on request

→ single emission



3,9W | 370 lm (*)
1 opening
spot

13°
12280 cd/klm

→ single emission



3,9W | 290 lm (*)
1 opening
wide

44°
1680 cd/klm

WHITE LED

3000K CRI>80
220-240V 0/50/60Hz ⊕

2700K / 4000K
available on request

→ double emission



6,9W | 740 lm (*)
2 openings
spot

2 x 13°
6140 cd/klm

→ double emission



6,9W | 580 lm (*)
2 openings
wide

2 x 44°
840 cd/klm

→ double emission



6,9W | 660 lm (*)
2 openings
spot / wide

13° / 44°
6970 cd/klm

details

Extruded aluminium alloy body. Die-cast closing flange and wall attachment made of aluminium alloy with very low copper content. Wiring made with quick-fit terminals to simplify assembly operations. A4 Stainless steel screws. The product is subjected to galvanic anodizing treatment divided into distinct phases: mechanical satin finishing, surface degreasing, anodic oxidation and finally fixing. Subsequently the product is painted by performing a double pass in-line process, which allows you to generate a single thick protective layer which then generates barrier against atmospheric agents and UV rays. This allows to achieve corrosion resistance performance in salt spray.

standard finishes

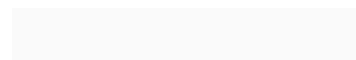
on request finishes



.06 grey



.01 black



.02 white



.08 anthracite



.07 corten



.09 bronze

(*) Real Data



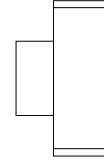


wall effect



TETRA 140
applique

140 x 140 x h. 380 mm



WHITE LED

3000K CRI>80
220-240V 0/50/60Hz ⊕

2700K / 4000K
available on request

→ single emission



11W | 920 lm (*)
1 opening
spot

9°
22470 cd/klm

→ single emission



11W | 785 lm (*)
1 opening
wide

44°
2360 cd/klm

→ single emission



11W | 750 lm (*)
1 opening
elliptical

2910 cd/klm

WHITE LED

3000K CRI>80
220-240V 0/50/60Hz ⊕

2700K / 4000K
available on request

→ double emission



21W | 1840 lm (*)
2 openings
spot

2 x 9°
11235 cd/klm

→ double emission



21W | 1570 lm (*)
2 openings
wide

2 x 44°
1180 cd/klm

→ double emission



21W | 1500 lm (*)
2 openings
elliptical

1455 cd/klm

→ double emission



21W | 1705 lm (*)
2 openings
spot / wide

9° / 44°
4180 cd/klm

(*) Real Data

Tetra 75 applique