

Collection

MARMO

Article

MR398_1

Description

Five holes wall mounted bath filler with diverter and hand-shower

Box Dimensions

470 x 290 x 160 mm

Weight

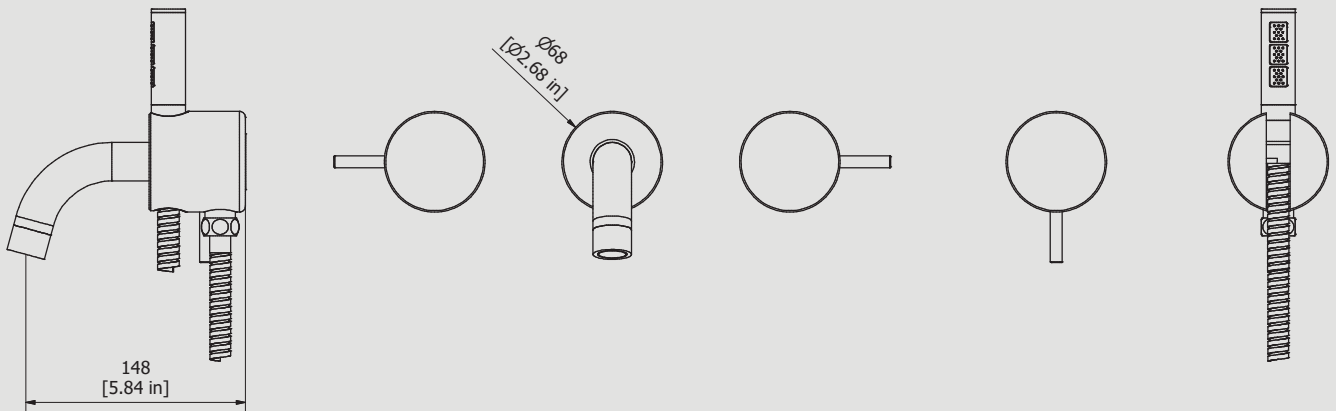
5.8 kg

Finishes

- **CC**
CHROME
- **CF**
BLACK CHROME
- **OO**
GOLD
- **BB**
ANTIQUE BRONZE
- **SS**
BRUSHED NICKEL
- **CS**
BRUSHED BLACK CHROME
- **BO**
MATT WHITE
- **NP**
MATT BLACK
- **IS**
BRUSHED PALE GOLD
- **OS**
BRUSHED GOLD
- **II**
PALE GOLD
- **RR**
ANTIQUE COPPER
- **RS**
ROSE GOLD
- **ON**
NATURAL BRASS
- **SR**
BRUSHED ROSE GOLD
- **PL**
PLATINUM



Dimensions



Cartridge

G1/2" ceramic headworks

Treaded fitting

Treaded fitting G1/2" female

Aerator

M24x1

Flow Rate (+/-10%)

1 BAR	2 BAR	3 BAR
12.1 l/min	17.1 l/min	21 l/min

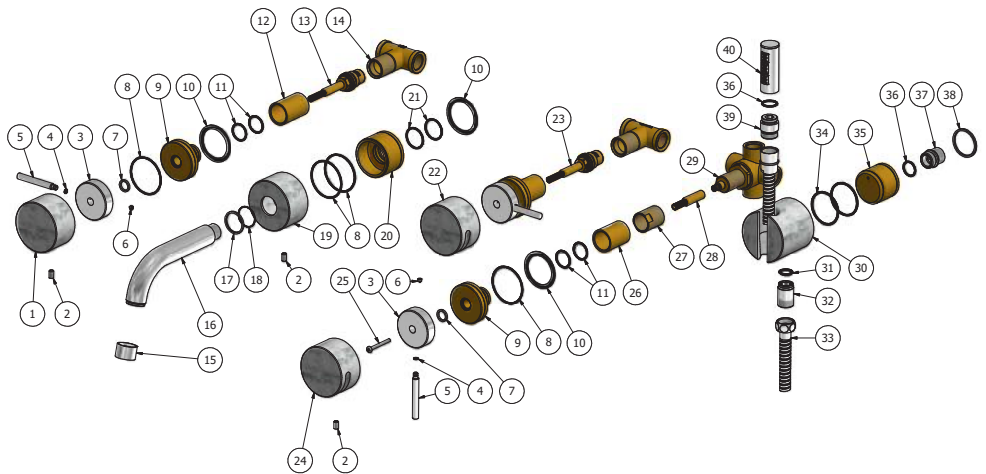
Production

Main body is a single casted pieces

Material

BRASS
According to CuZn35PbAl-B (CB752S)
Max Lead content: 1.36%

Parts list			
ELEM	CODE	DESCRIPTION	QT
1	AQ0014840	Marble cover Ø68 H40 left	1
2	AQ0015105	Nylon grubscrow M6x10 taglio cacciavite p.p.	4
3	AC0012479	Handle Ø51 H22	3
4	AQ0010327	OR 4x1 NBR 70 SH	3
5	AC0012453	Rod Ø8 M6 H63	3
6	AQ0009729	Grubscrow M5x5 cone point	3
7	AQ0011066	Antifriction ring Ø15.8x13.2x2.2	3
8	AQ0001450	OR 47.37x1.78 NBR 70 SH	5
9	AS0012478	Handle's support Ø52.4 Ø24.8 H35	3
10	AQ0009591	Gasket plane Ø40 Ø49.5 H1.5	4
11	AQ0001400	OR 20.35x1.78 NBR 70 SH	6
12	AS0012477	Ring Ø30 M24x1 H44	2
13	AQ0014917	Ceramic headwork 90° left red (FCN0796S-6090RS)	1
14	CC0002005	Built-in stopcocks G1/2"	2
15	AQ0015036	Aerator Ø26 H17 M24x1 flow straightener (40.9100.33301)	1
16	AC0012558	Spout-out Ø26 L145	1
17	AC0012591	Ring Ø30 Ø26.9 H2	1
18	AQ0015103	OR 26x1 NBR 70 SH	1
19	AQ0014949	Marble cover Ø68 H40 carrara's white	1
20	AS0012527	Ring for spout Ø52.4 H34 Ø26.5	1
21	AQ0006586	OR 25.12x1.78 NBR 70 SH	2
22	AQ0014843	Marble cover Ø68 H60 right	1
23	AQ0014918	Ceramic headwork 90° right cold blue (FCN0796D-6090BL)	1
24	AQ0014942	Marble diverter cover Ø68 H40 180°	1
25	AQ0014951	Inox screw M4x55	1
26	AS0012528	Ring Ø30 26x19 H39	1
27	AS0009995	Bush for headwork W26 x 19 W22 x 19	1
28	AS0012529	Extension for diverter's rod 8x20 H56	1
29	AQ0010279	Diverter 2 in - 2 out complete short	1
30	AQ0014944	Marble cover hand shower's support Ø68 H65	1
31	AQ0001390	OR 14x2 NBR 70 SH	1
32	AC0012530	Shower connection piece 1/2" M19x1 H30.2	1
33	AQ0003120	Inox hose G1/2" F G1/2" F cone L150	1
34	AQ0013363	OR 41x2 NBR 70 SH	2
35	AS0012531	Insert Ø44.9 H35	1
36	AQ0004630	OR 17.16x1.78 NBR 70 SH	2
37	AC0012388	Nipple G1/2" G1/2" H26	1
38	AQ0010274	Rubber packing Ø38x33.5x2	1
39	AC0010689	Connection piece for hose	1
40	AQ0012013	Handshower head Ø23 H65	1



WARRANTY

All IB Rubinetterie SpA products are warranted for 10 years from the date of purchase, for the following cases:

- Defects of casting, porosity and chrome plating.
- Operating defects caused by incorrect fabrication.

The warranty provides for repair or replacement of products with fabrication defects recognized by our technical office. There is no other type of compensation anche the merchandise must be returned FOB our warehouse. The warranty only cover surface defects (scatches, dings, etc.) on fitting that have not been installed and used, returned in its original packaging with all components. O-ring, gasket seals and components subject to wear proportional to use are warranted for 2 years.

The warranty is void in the following cases:

Error installing and putting the product into service.

Deterioration of finisched surfaces due to use of cleaning products containing acids or abrasive substances. Deterioration of surface with finishes other than chrome plating. Their durability is, in fact, dependent on the user's care and gentleness of use.

Deterioration of the fitting due incorrect installation.

Improper repairs and maintenance performed without the company's prior authorization.

The warranty from IB Rubinetterie SpA is not renewable.

Cleaning

We recommended cleaning the finish surfaces with water and soap, using a soft cloth.

Do not use detergents that cointain hydrochloric acid or abrasive substances.

