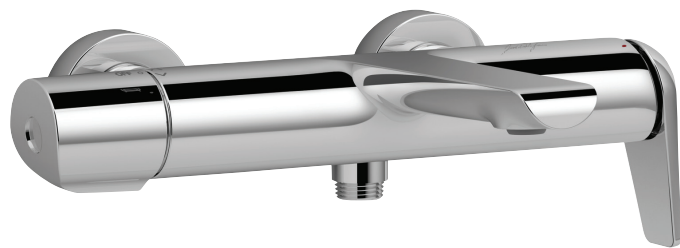


E97369



Collection: AVID

Finish*:



CP - Chrome

Main features:



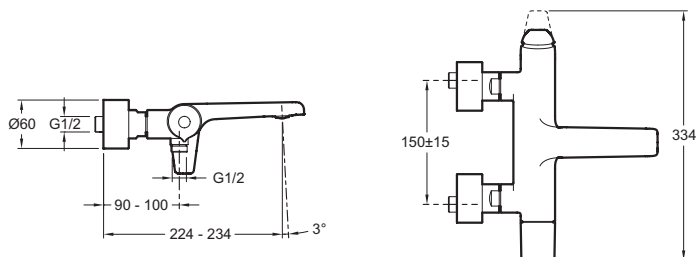
Features

- WEIGHT: 3.7 kg
- INSTALLATION TYPE: 2 holes
- FLOW RATE: 22 l/mn
- MECHANISM: Ceramic disc cartridge
- DIVERTER: Automatic diverter built into handle
- Non-return valve on shower outlet
- MATERIAL: Brass
- TYPE: Single-lever
- CONNECTION: With connectors and wall escutcheons
- HOLE CONFIGURATION: 150 ± 15
- MECHANISM GUARANTEE: 5 years

Consumer benefits

- DESIGNED TO LAST: One-piece, all brass mixer. Metal handle and cartridge pin provide greater resistance.

Technical drawing



Product Specification: Single-lever wall bath/shower mixer. E97369. Collection: AVID. WEIGHT: 3.7 kg. MATERIAL: Brass. INSTALLATION TYPE: 2 holes. TYPE: Single-lever. FLOW RATE: 22 l/mn. CONNECTION: With connectors and wall escutcheons. MECHANISM: Ceramic disc cartridge. HOLE CONFIGURATION: 150 ± 15 . DIVERTER: Automatic diverter built into handle. MECHANISM GUARANTEE: 5 years. Non-return valve on shower outlet.

*Due to possible variations in computer and printer calibrations, technical factors and certain finish characteristics, the colors you see may not accurately portray the actual colors and are provided as a guide only.