

## PAN

ZT28646

Termostatico incasso doccia con deviatore 2/3 vie. / Built-in therm. shower mixer, 2/3 way diverter.



Termostatico incasso doccia da 1/2" e deviatore a 2/3 vie con apertura/chiusura acqua.

1/2" built-in thermostatic shower mixer and 2/3 way diverter with water on/off function.

R97810

Parte incasso termostatico 2 vie / Built-in part -  
2 way thermostatic mixer



R97815

Parte incasso termostatico 3 vie / Built-in part -  
3 way thermostatic mixer



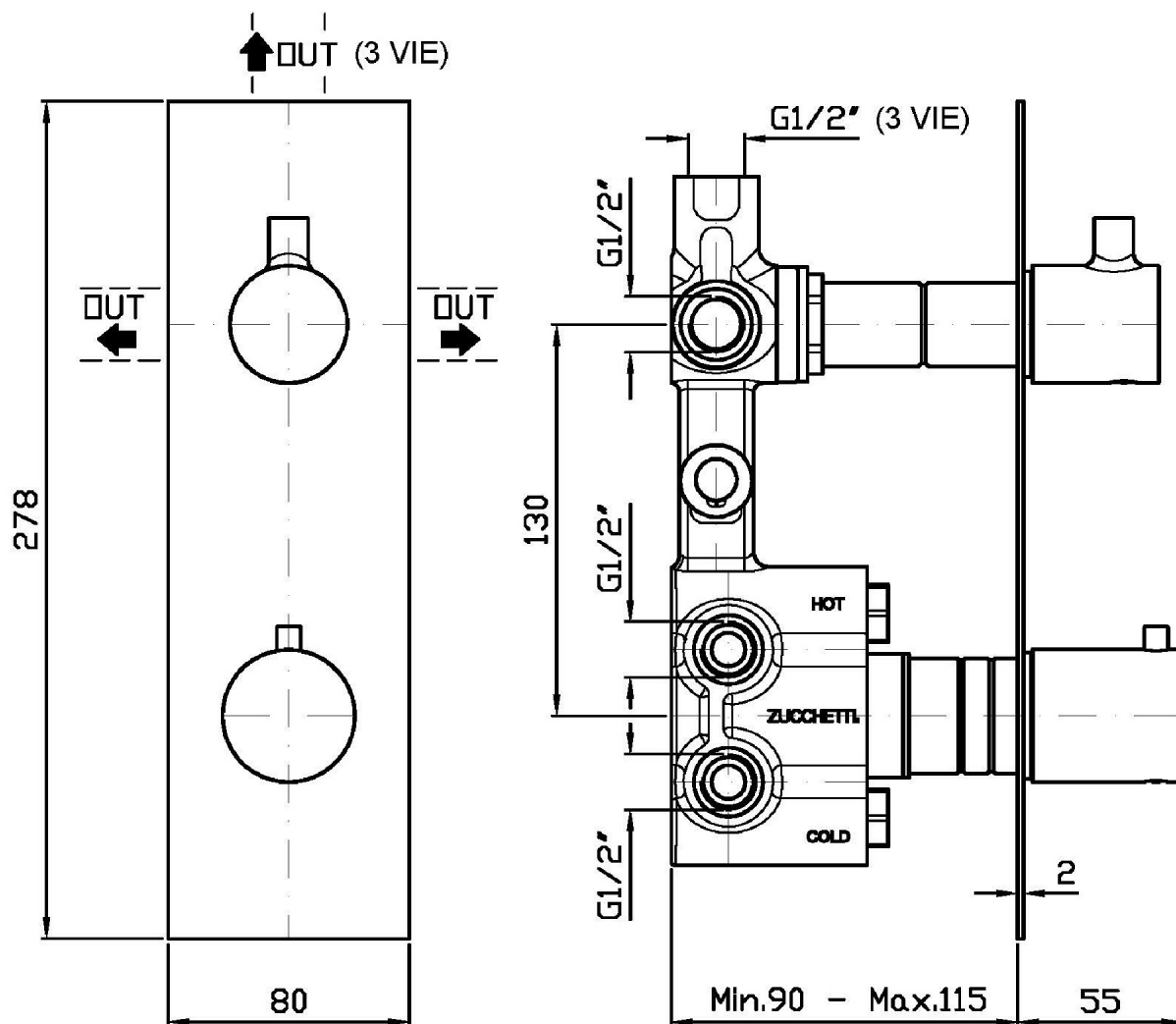
## Finiture / Finishes

Cromo / Chrome	Nickel Spazzolato / Brushed Nickel	Nickel Lucido / Polished Nickel	Oro / Gold	Oro spazzolato / Brushed Gold	Metal Black / Metal Black	Metal Black spazzolato / Brushed Metal Black
Bianco Opaco Goffrato / Embossed Matt White	Nero Opaco Goffrato / Embossed Matt Black	Nero Soft Touch / Soft Touch Black				

## PAN

ZT28646

Disegno Complessivo / Overall Drawing



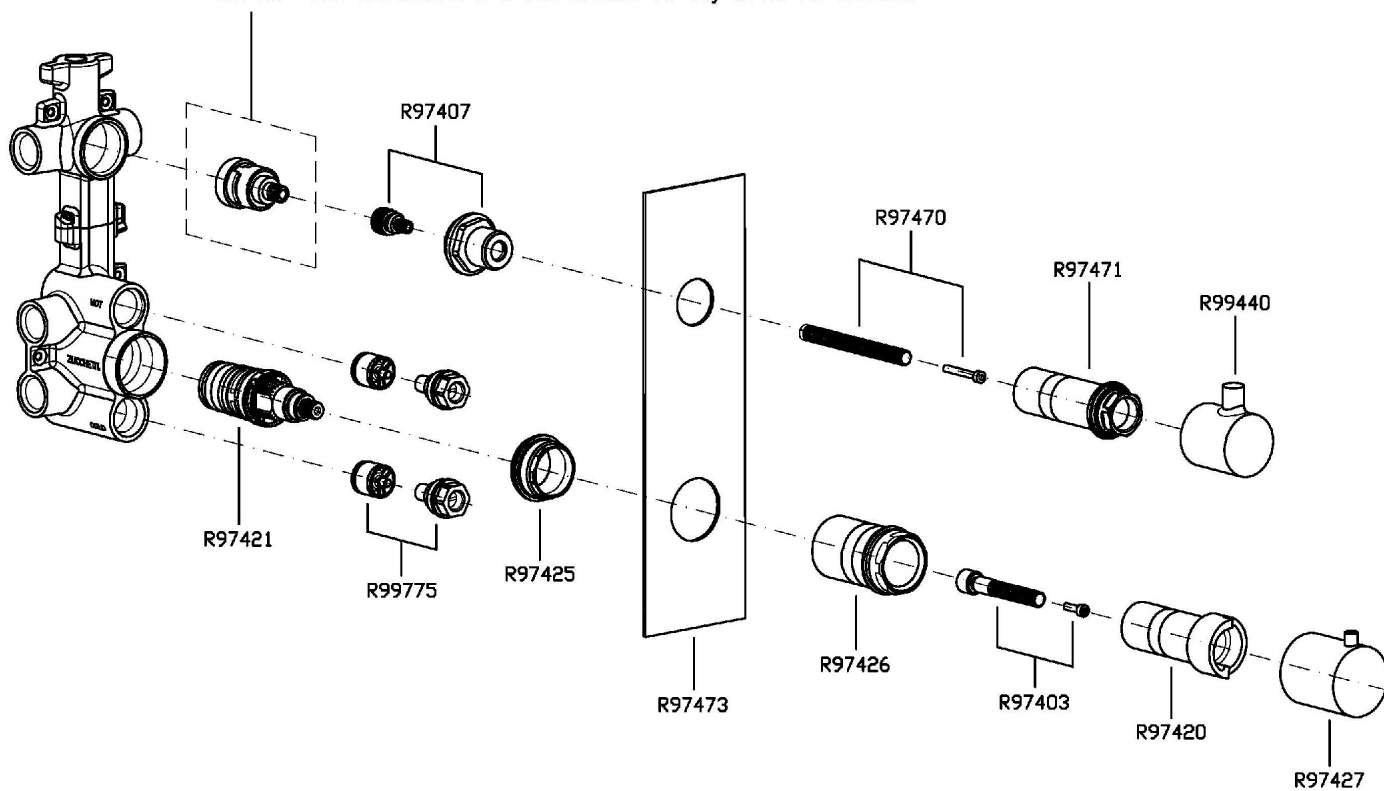
## PAN

ZT28646

Esplosi / Exploded

R97416: PER DEVIATORE A 2 VIE R97810 (2 way diverter R97810)

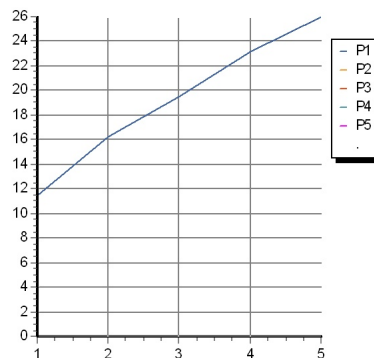
R97417: PER DEVIATORE A 3 VIE R97815 (3 way diverter R97815)



## PAN

### ZT28646 Portate / Flowrates (lt/min)

PRESSIONE PRESSURE	1 BAR	2 BAR	3 BAR	4 BAR	5 BAR
DEVIATORE	11,5	16,2	19,5	23,2	26
P1					
P2					
P3					
P4					
P5					



## PAN

### ZT28646 Pesi e Misure / Weights and Sizes

Peso ( Kg ) Weight ( lb )	1,35 ( Kg )	2,98 ( lb )
Volume test ( dc3 ) - ( in3 )	5,68 ( dc3 )	346,61 ( in3 )
h ( mm ) - ( in )	75,00 ( mm )	2,95 ( in )
L1 ( mm ) - ( in )	180,00 ( mm )	7,09 ( in )
L2 ( mm ) - ( in )	420,00 ( mm )	16,54 ( in )

