

La sobria verticalità di Arpa18_2 rappresenta una moderna estetica che si integra in qualsiasi ambiente. Lo stile di Arpa18_2 si completa nella modulare funzionalità.



Arpa 18 2, verticale, 20 elementi, altezza 364 mm, larghezza 2020 mm, Bianco Perla

Caratteristiche costruttive

collettori a sezione circolare diametro 30 mm
elementi in lamiera d'acciaio diametro 18 mm
filettature estremità collettore 1/2" Gas destra
pressione di esercizio massima ammessa: 10 bar
temperatura di esercizio massima ammessa: 95°C

Dotazione di serie

sistemi di fissaggio al muro con viti e tasselli
tappo cieco da 1/2" con copri tappo
valvola sfiato da 1/2"

Certificazioni



Plus



Dati tecnici

Modello	Profondità (mm)	Altezza (mm)	Interasse (mm)	Peso (kg)	Capacità (lt)	$\Delta t=50^{\circ}\text{C}$ (kcal/h)	$\Delta t=50^{\circ}\text{C}$ (Watt)	$\Delta t=40^{\circ}\text{C}$ (Watt)	$\Delta t=30^{\circ}\text{C}$ (Watt)	$\Delta t=20^{\circ}\text{C}$ (Watt)	Esponente
520	62,0	520	470	0,54	0,23	26,7	31,1	23,3	16,0	9,5	1,296
550	62,0	550	500	0,57	0,24	28,1	32,7	24,5	16,9	10,0	1,296
650	62,0	650	600	0,66	0,28	32,6	37,9	28,4	19,5	11,5	1,298
670	62,0	670	620	0,68	0,29	33,5	38,9	29,1	20,0	11,8	1,298
700	62,0	700	650	0,71	0,30	34,8	40,5	30,3	20,9	12,3	1,299
750	62,0	750	700	0,75	0,32	37,0	43,0	32,2	22,1	13,1	1,300
850	62,0	850	800	0,84	0,36	41,3	48,0	35,9	24,7	14,6	1,302
870	62,0	870	820	0,86	0,37	42,8	49,8	37,2	25,6	15,1	1,302
920	62,0	920	870	0,91	0,39	44,3	51,5	38,5	26,5	15,6	1,303
1220	62,0	1220	1170	1,18	0,50	56,6	65,8	49,1	33,7	19,8	1,308
1520	62,0	1520	1470	1,46	0,62	68,4	79,5	59,3	40,7	23,9	1,312
1820	62,0	1820	1770	1,73	0,74	79,7	92,7	69,1	47,3	27,7	1,319
2020	62,0	2020	1970	1,92	0,82	87,0	101,2	75,3	51,5	30,1	1,324
2220	62,0	2220	2170	2,10	0,90	94,2	109,5	81,4	55,5	32,4	1,329
2520	62,0	2520	2470	2,37	1,01	104,6	121,6	90,3	61,5	35,8	1,336

(*) Grazie alle elevate prestazioni dei radiatori Arpa18_2 Verticale, il Δt ideale per la progettazione a bassa temperatura è 30°C

Per Δt diversi da 50°C utilizzare la formula: $Q=Q_n (\Delta t / 50)^n$

Dotazione di serie

- sistemi di fissaggio al muro con viti e tasselli • tappo cieco da 1/2" con copri tappo • valvola sfiato da 1/2"

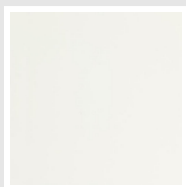
Rese a batteria

Lunghezza (mm)	N° Elementi		520	550	650	670	700	750	850	870	920	1220	1520	1820	2020	2220	2520
109	4	Watt = W =	124	131	152	156	162	172	192	199	206	263	318	371	405	438	486
163	6	Watt = W =	187	196	227	233	243	258	288	298	309	395	477	556	607	657	730
217	8	Watt = W =	249	262	303	311	324	344	384	398	412	526	636	742	810	876	973
271	10	Watt = W =	311	327	379	389	405	430	480	498	515	658	795	927	1012	1095	1216
325	12	Watt = W =	373	392	455	467	486	516	576	597	618	790	954	1112	1214	1314	1459
379	14	Watt = W =	435	458	531	545	567	602	672	696	721	921	1113	1298	1417	1533	1702
433	16	Watt = W =	498	523	606	622	648	688	768	796	824	1053	1272	1483	1619	1752	1946
487	18	Watt = W =	560	589	682	700	729	774	864	896	927	1184	1431	1669	1822	1971	2189
541	20	Watt = W =	622	654	758	778	810	860	960	995	1030	1316	1590	1854	2024	2190	2432
595	22	Watt = W =	684	719	834	856	891	946	1056	1094	1133	1448	1749	2039	2226	2409	2675
649	24	Watt = W =	746	785	910	934	972	1032	1152	1194	1236	1579	1908	2225	2429	2628	2918
703	26	Watt = W =	809	850	985	1011	1053	1118	1248	1294	1339	1711	2067	2410	2631	2847	3162
757	28	Watt = W =	871	916	1061	1089	1134	1204	1344	1393	1442	1842	2226	2596	2834	3066	3405
811	30	Watt = W =	933	981	1137	1167	1215	1290	1440	1492	1545	1974	2385	2781	3036	3285	
865	32	Watt = W =	995	1046	1213	1245	1296	1376	1536	1592	1648	2106	2544	2966	3238		
919	34	Watt = W =	1057	1112	1289	1323	1377	1462	1632	1692	1751	2237	2703	3152	3441		
973	36	Watt = W =	1120	1177	1364	1400	1458	1548	1728	1791	1854	2369	2862	3337	3643		
1027	38	Watt = W =	1182	1243	1440	1478	1539	1634	1824	1890	1957	2500	3021	3523			
1081	40	Watt = W =	1244	1308	1516	1556	1620	1720	1920	1990	2060	2632	3180	3708			
1135	42	Watt = W =	1306	1373	1592	1634	1701	1806	2016	2090	2163	2764	3339				
1189	44	Watt = W =	1368	1439	1668	1712	1782	1892	2112	2189	2266	2895	3498				

Lunghezza (mm)	N° Elementi		520	550	650	670	700	750	850	870	920	1220	1520	1820	2020	2220	2520
1243	46	Watt = W =	1431	1504	1743	1789	1863	1978	2208	2288	2369	3027	3657				
1297	48	Watt = W =	1493	1570	1819	1867	1944	2064	2304	2388	2472	3158					
1351	50	Watt = W =	1555	1635	1895	1945	2025	2150	2400	2488	2575	3290					
1405	52	Watt = W =	1617	1700	1971	2023	2106	2236	2496	2587	2678	3422					
1459	54	Watt = W =	1679	1766	2047	2101	2187	2322	2592	2686	2781	3553					
1513	56	Watt = W =	1742	1831	2122	2178	2268	2408	2688	2786	2884	3685					
1567	58	Watt = W =	1804	1897	2198	2256	2349	2494	2784	2886	2987						
1621	60	Watt = W =	1866	1962	2274	2334	2430	2580	2880	2985	3090						

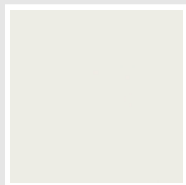
Colori e finiture

STANDARD



Bianco Standard
Cod. 01

CLASSIC



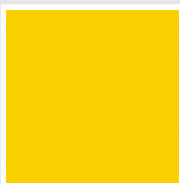
Bianco Edelweiss
Cod. 34



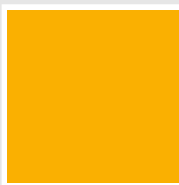
Avorio - RAL 1013
Cod. 02



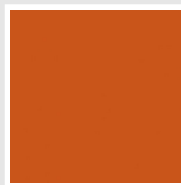
Beige Cream
Cod. 26



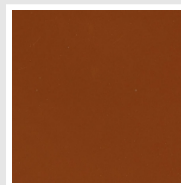
Giallo - RAL 1021
Cod. 04



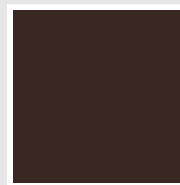
**Giallo Melone -
RAL 1028**
Cod. E7



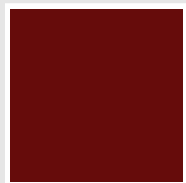
Arancio - RAL 2004
Cod. 17



**Marrone Ruggine -
RAL 8004**
Cod. E1



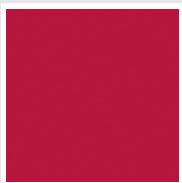
Marrone - RAL 8017
Cod. 09



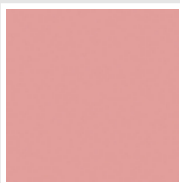
**Amaranto - RAL
3003**
Cod. 06



Rosso - RAL 3000
Cod. 05



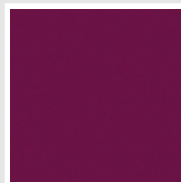
**Rosso Fragola -
RAL 3018**
Cod. Y3



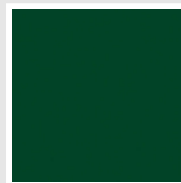
Rosa - RAL 3015
Cod. R2



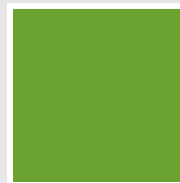
**Lilla Bluastro - RAL
4005**
Cod. R3



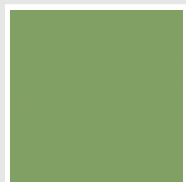
**Porpora Traffico -
RAL 4006**
Cod. R6



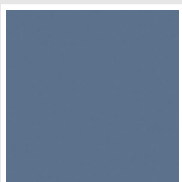
**Verde Bosco - RAL
6005**
Cod. 19



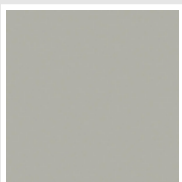
**Verde Erba - RAL
6018**
Cod. N3



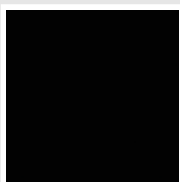
**Verde Salvia - RAL
6021**
Cod. E6



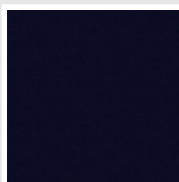
**Blu Pastello - RAL
5024**
Cod. G7



Grigio Manhattan
Cod. 03

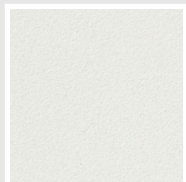


Nero - RAL 9005
Cod. 10

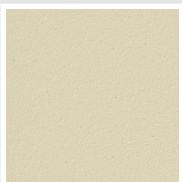


Deep Blue
Cod. 2F

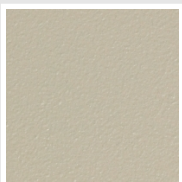
SPECIAL



Bianco Perla
Cod. 16



Quartz 1
Cod. 1C



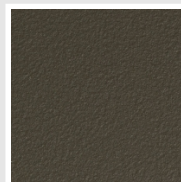
Sablé
Cod. Y4



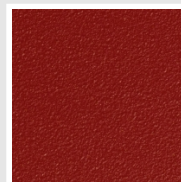
Quartz 2
Cod. 2C



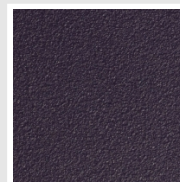
Sunstone
Cod. 2D



Bruno Tabacco
Cod. 1B



Flame Red
Cod. 7D



Purple Blue
Cod. 1D



Azurite 3
Cod. 6C

Grigio Medio
Cod. 4D

**Grigio Titanio
Metallizzato - RAL
9023**
Cod. L3

Grigio Perla
Cod. L6

Nero Grafite
Cod. 18

Grigio Quarzo
Cod. 31

Nero Satinato
Cod. 30

Bianco Opaco
Cod. J8



Nero Opaco
Cod. K1

Agave
Cod. 9N

Blu Baltico
Cod. 1P

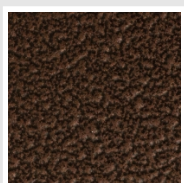
Ghiaccio
Cod. 3P

**Blu Colomba
Opaco - RAL 5014**
Cod. 4P

**Grigio Chiaro
Opaco**
Cod. 8N

**Grigio Cenere - Ral
7021**
Cod. G1

Grigio Martellato
Cod. 32



Rame Martellato
Cod. J4

RAL



Altri colori RAL (previa fattibilità)
Cod. ALTRIRAL

I colori rappresentati in questa cartella non sono da considerarsi impegnativi. I diversi processi tecnologici di verniciatura ed i materiali utilizzati per la realizzazione possono non avere una perfetta corrispondenza cromatica con il prodotto consegnato. L'azienda Irsap si riserva la facoltà di apportare in qualsiasi momento tutte le modifiche necessarie per il miglioramento del prodotto.