

HAMP

SOFA 2

REF.: 76747



Materials

Structure of natural Teak. Batyline fabric.

Dimensions

Length x width x height:

167 x 91 x 75 cm. / 65.7 x 35.8 x 29.5 in.

Seating height: 41 cm. / 16.1 in.

Armrests height: 57 cm. / 22.4 in.

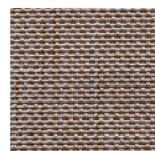
Weight: 32 Kg. / 70 lb.

Volume: 1.44 m³.

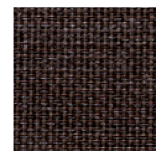
Finish

Fabric color:

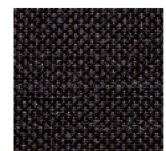
Batyline 09



Batyline 10



Batyline 11

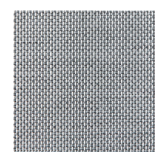


Cushion content

Polyurethane Foam 35Kg HR Density.

Structure:

Batyline 13



Natural Teak



Fabric

100% Solution Dyed Acrylic with stain and mildew resistant treatment.

Avoid condensation from hot and humidity.

Good oil repellency. Light fastness 7/8.

Warranty 5 years. **See available fabrics samples.**