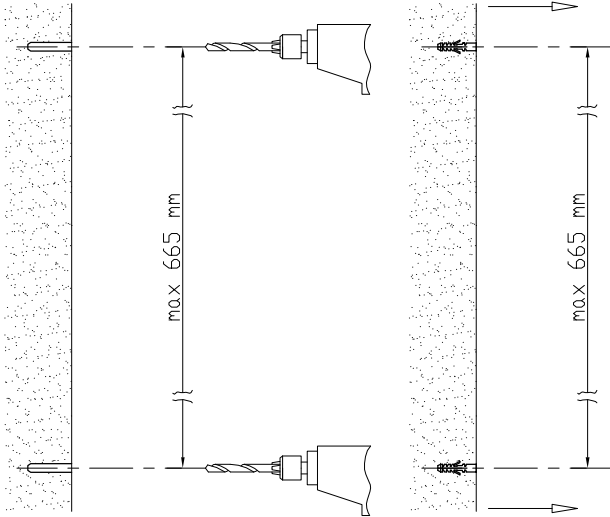


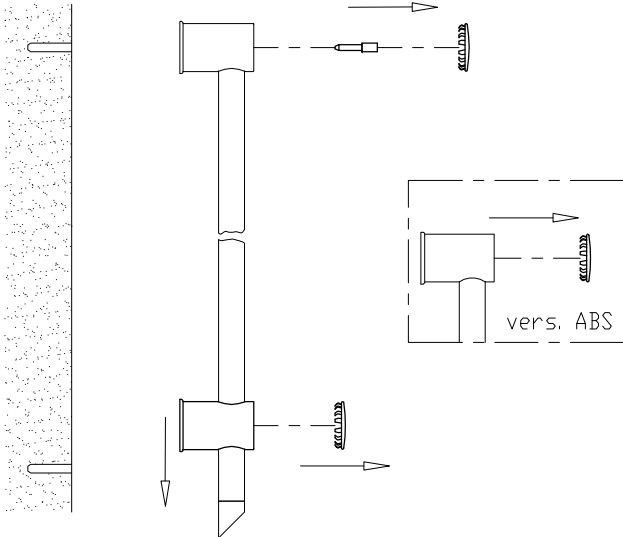
ISTRUZIONI PER IL MONTAGGIO

ASSEMBLING INSTRUCTIONS

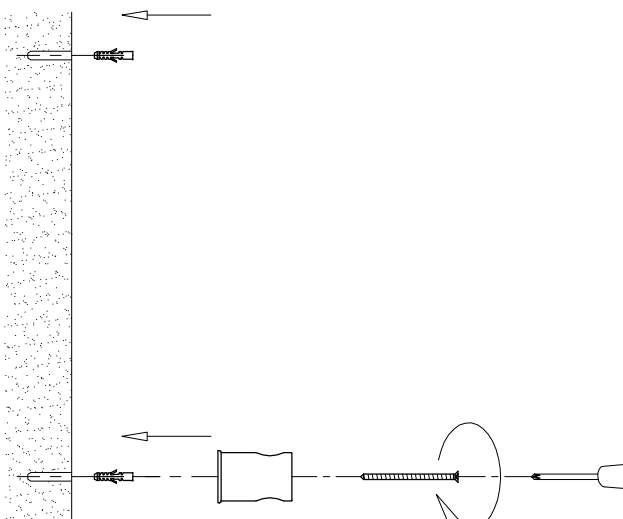


- 1) Praticare due fori da \varnothing 8 mm.
1) Make two holes of diameter 8 mm.

- 1A) Con fori già esistenti.
Rimuovere i tasselli.
1A) With existing holes.
Remove the dowels.



- 2) Rimuovere le placchette, la spina ed il supporto.
2) Remove the plates, the plug and the holder.

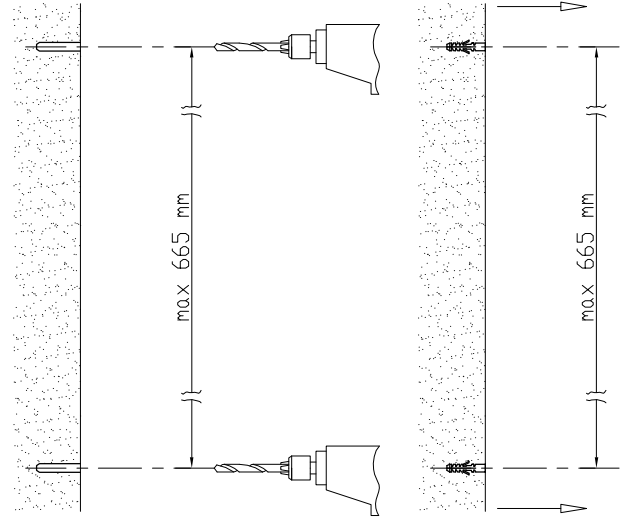


- 3) Inserire i tasselli forniti e fissare con la vite.
3) Insert the two supplied dowels and fix with the screw.

IST0017 Rev.00 del 07/05/2008

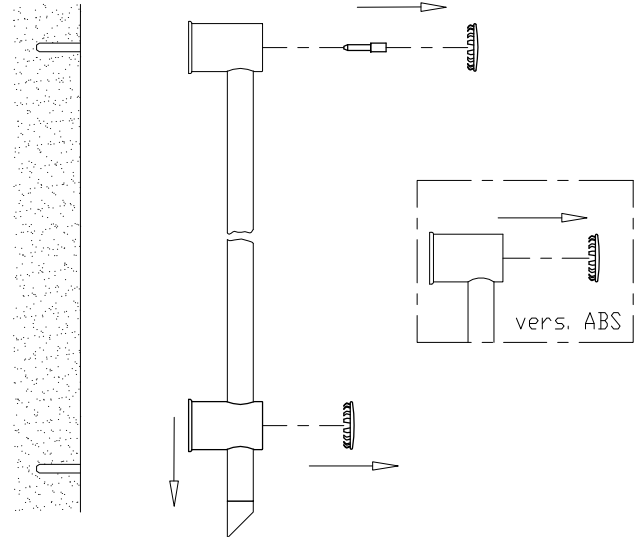
ISTRUZIONI PER IL MONTAGGIO

ASSEMBLING INSTRUCTIONS

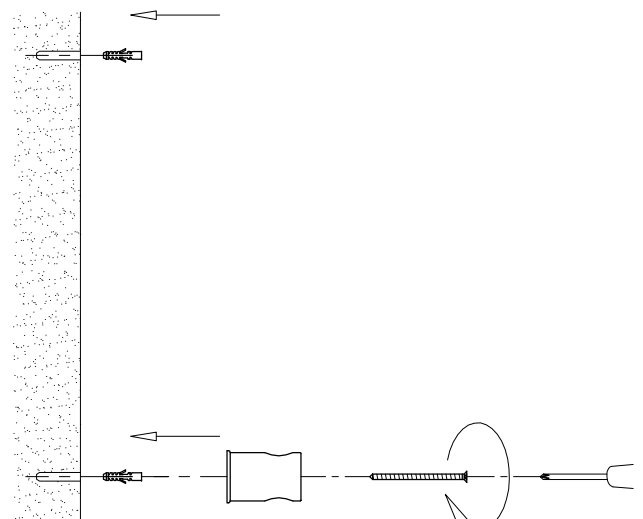


- 1) Praticare due fori da \varnothing 8 mm.
1) Make two holes of diameter 8 mm.

- 1A) Con fori già esistenti.
Rimuovere i tasselli.
1A) With existing holes.
Remove the dowels

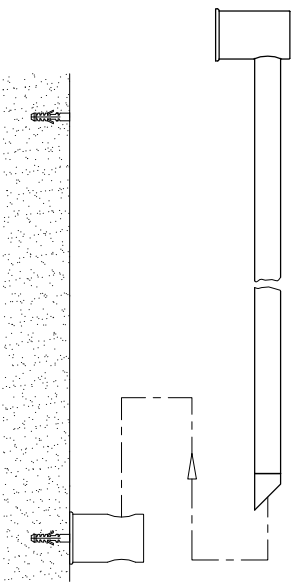


- 2) Rimuovere le placchette, la spina ed il supporto.
2) Remove the plates, the plug and the holder.

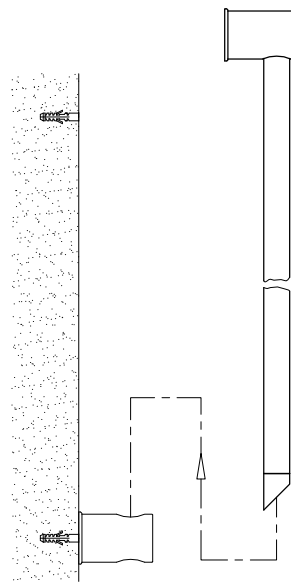


- 3) Inserire i tasselli forniti e fissare con la vite.
3) Insert the two supplied dowels and fix with the screw.

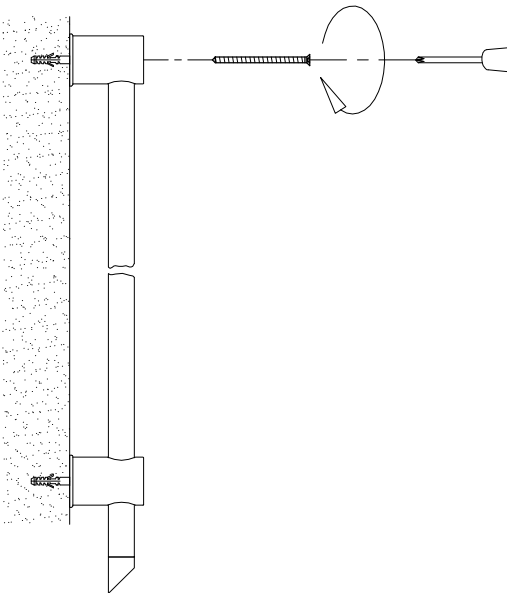
IST0017 Rev.00 del 07/05/2008



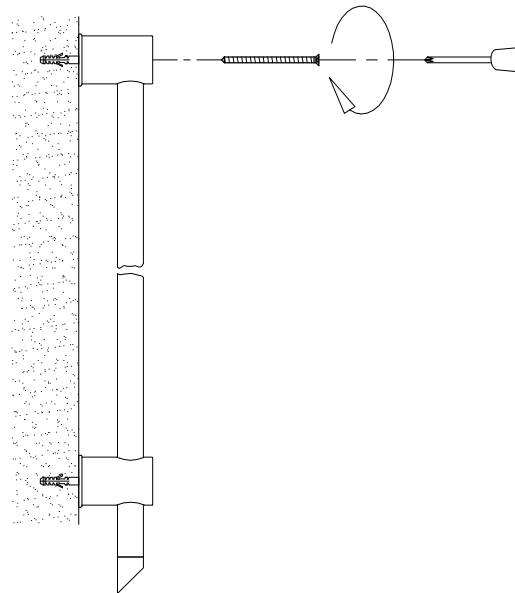
4) Inserire la rampa.
4) Insert the sliding rail.



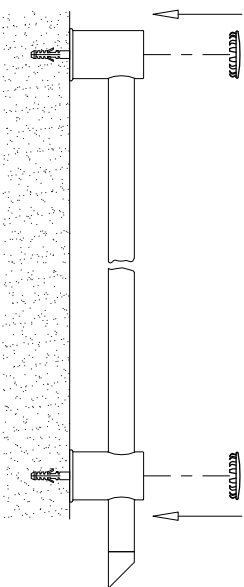
4) Inserire la rampa.
4) Insert the sliding rail.



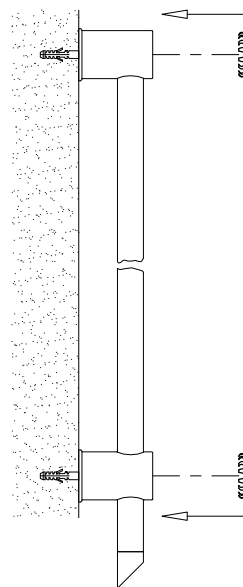
5) Fissare con la vite.
5) Fix with the screw.



5) Fissare con la vite.
5) Fix with the screw.



6) Applicare le placchette a pressione.
6) Put the plates with pressure.



6) Applicare le placchette a pressione.
6) Put the plates with pressure.