

STICK

ARCHITECTURAL OUTDOOR LIGHTING



ARCHITECTURAL OUTDOOR LIGHTING

Gaspare Inglese

bollard

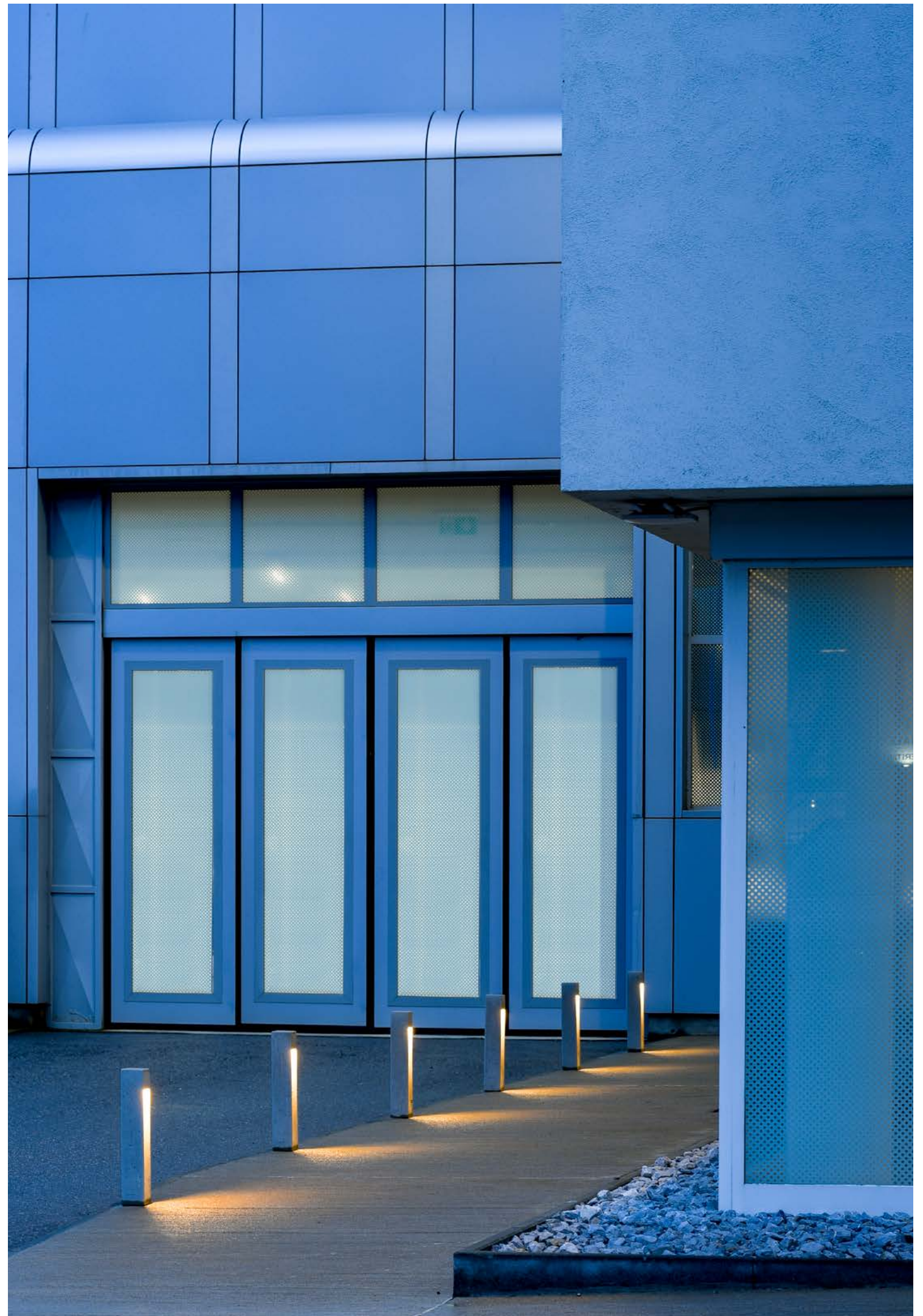
STICK



bollard

A bollard in precast concrete by perfect volume: a parallelepiped which recalls, by primitive shapes and sharp edges, monuments of civilization disappeared. The light is projected through cuts and inclined planes. Stick is suitable for illuminating pedestrian pathways and footpaths of modern constructions.

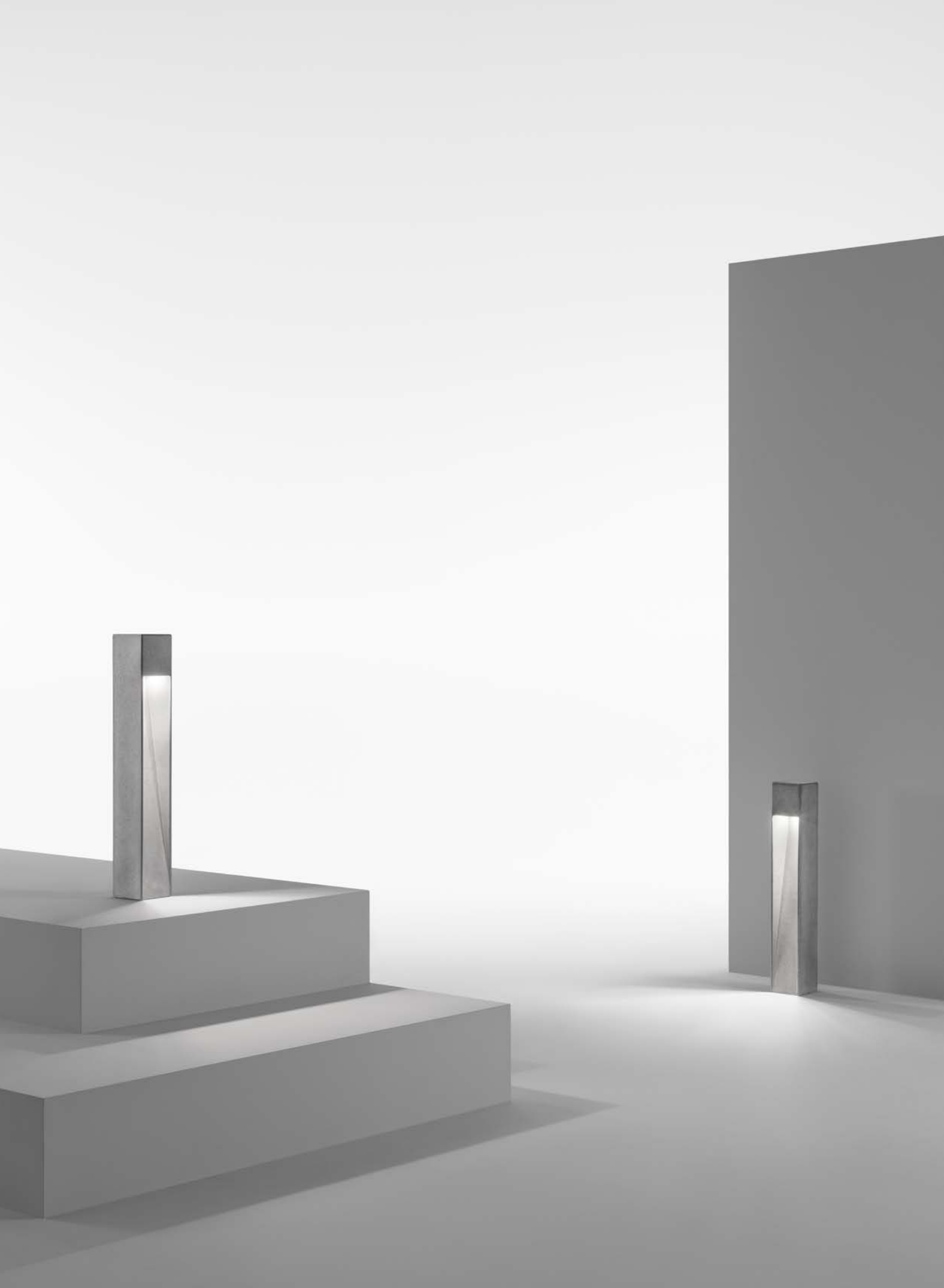
ARCHITECTURAL OUTDOOR LIGHTING



bollard

STICK

ARCHITECTURAL OUTDOOR LIGHTING



collection




IP65
IK 06

2 mm polycarbonate
diffuser

90x90 x h. 550 mm



WHITE LED

3000K CRI>80
220-240V 50/60Hz 

2700K / 4000K
available on request



9W | 305 lm (*)
1 opening
diffuse



58° x 42°
980 cd/klm

(*) Real Data

details

Precast concrete body. No visible screws. Floor fixing flange with AISI 316 stainless steel completely concealed. PMMA diffuser.

standard finishes



natural