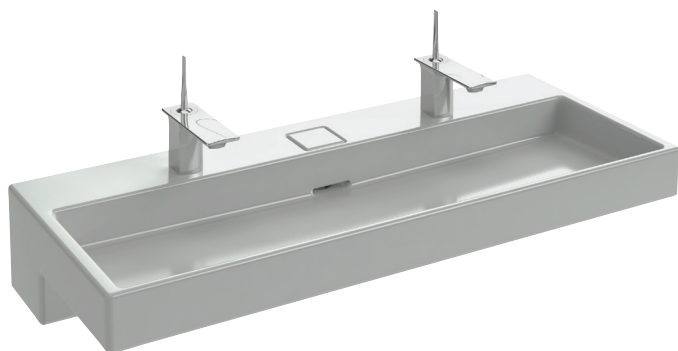


EXB9112



Collection: TERRACE

Finish*:



00 - White

Main features:



Features

- **DIMENSIONS:** 120 x 49 cm
- **MATERIAL:** Ceramic
- **FAUCET DRILLING:** 2 tap holes
- **INSTALLATION:** STANDARD
- **NUMBER OF VANITY BASINS FOR VANITY TOPS:** Single basin vanity top for 2 taps
- **SUPPLIED WITH:** LED edge lighting
- With LED strip lighting (230 V/12V, energy efficiency class A++)
- Innovative concealed drain system patented by Kohler
- **WEIGHT:** 37.2 kg
- **INSTALLATION TYPE:** Self-supporting or can be mounted on a specific cabinet
- **TAP DRILLING:** 2 tap holes
- **OVERFLOW:** With overflow hole
- **PRODUCT INCLUDED:** (Tap and fixing kit not included)
- **TECHNOLOGY:** FreeDrain system
- Geometrically-inspired L-shaped vanity top provides a functional design element

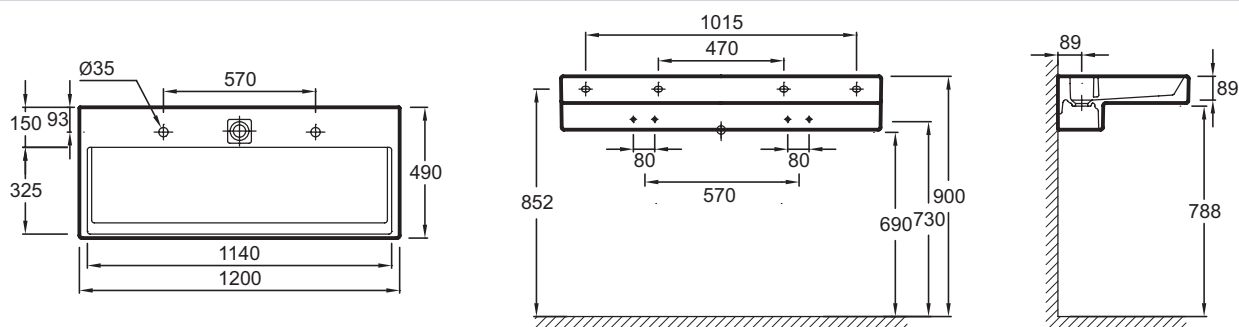
Consumer benefits

- **UNIQUE DESIGN:** Esthetic, elegant, precise geometrics for a contemporary design with L-shaped architecture
- **TECHNOLOGICAL INNOVATION:** FreeDrain is a patented offset waste system that lets the user control drainage with a simple touch to the plate
- **CLEVER:** Vanity top with integral lighting
- **EASY CARE:** With no center waste, there is room for an easy-to-clean wide rear ledge on the vanity top

Optional products

- EB1188: Base unit 120 cm

Technical drawing



Product Specification: Vanity top 120 cm. EXB9112. Collection: TERRACE. DIMENSIONS: 120 x 49 cm. WEIGHT: 37.2 kg. MATERIAL: Ceramic. INSTALLATION TYPE: Self-supporting or can be mounted on a specific cabinet. FAUCET DRILLING: 2 tap holes. TAP DRILLING: 2 tap holes. INSTALLATION: STANDARD. OVERFLOW: With overflow hole. NUMBER OF VANITY BASINS FOR VANITY TOPS: Single basin vanity top for 2 taps. PRODUCT INCLUDED: (Tap and fixing kit not included). SUPPLIED WITH: LED edge lighting. TECHNOLOGY: FreeDrain system. With LED strip lighting (230 V/12V, energy efficiency class A++). Geometrically-inspired L-shaped vanity top provides a functional design element. Innovative concealed drain system patented by Kohler.