

indoor

# Huma

## Upholstered armchair with metal legs / sillón comedor tapizado con patas metálicas

Mario Ruiz, 2017

T071 M

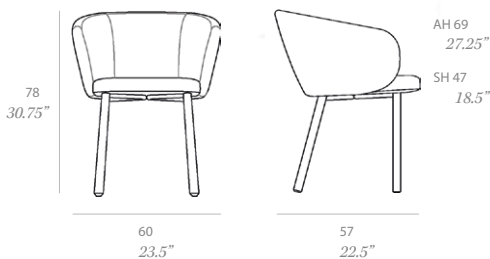


Upholstered armchair with metal legs. Backrest comes in steel tube covered with cold-cured moulded polyurethane foam. Upholstered seat and backrest. Multiple upholstery options are available: natural or faux leather, virgin wool fabrics, velvet and polypropylene.

Sillón de comedor tapizado con patas metálicas. La estructura del respaldo es de tubo de acero revestido con espuma flexible de poliuretano. Asiento y respaldo tapizados con múltiples opciones de disponibles: piel natural o sintética, tejidos de lana virgen, terciopelo y polipropileno.

### Shipment details

Qty	1 armchair (1 box)
Volume	0,33 m3 / 11.65 ft3
Gross weight	35 kg / 37 lb
Net weight	26 kg / 29 lb
Item dimensions (width x depth x height)	60 x 57 x 78 cm 23.5" x 22.5" x 30.75"
COM (1, 40 - 1,50 m / 54"-59")	2,00 m / 2.19 yd



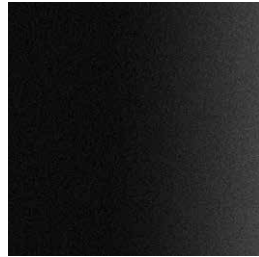
**Legs / patas**

**metallic finishes / metales**

---



100 FT white  
fine textured



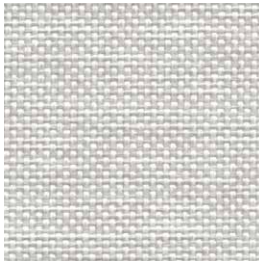
101 FT Black  
fine textured



108 FT oxide  
fine textured

Cushions / confección

group 1 - dolce Crevin®



dolce 07



dolce 05



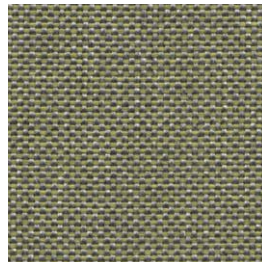
dolce 53



dolce 47



dolce 24



dolce 30

group 1 - valencia™ faux leather



valencia 1049



valencia 0020



valencia 9035

Cushions / confección

group 2 - remix 2 Kvadrat®



remix 113

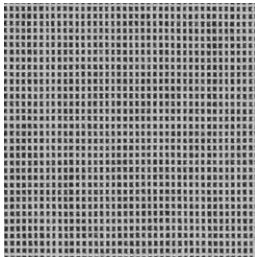


remix 233

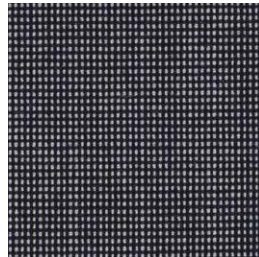


remix 393

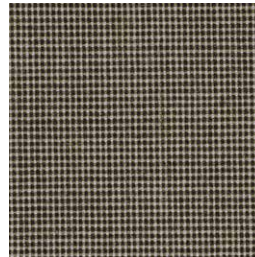
group 2 - umami Kvadrat®



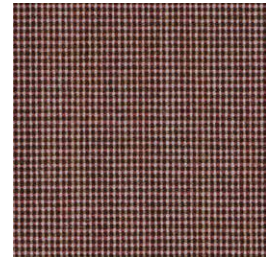
umami 111



umami 191

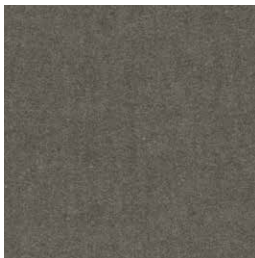


umami 251

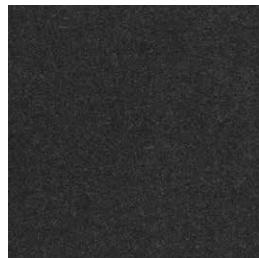


umami 441

group 2 - harald 3 Kvadrat® / Raf Simons



harald 242



harald 283



harald 582



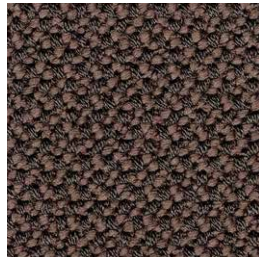
harald 982

Cushions / confección

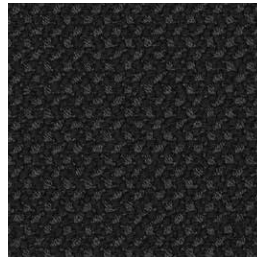
group 2 - credo Rohi®



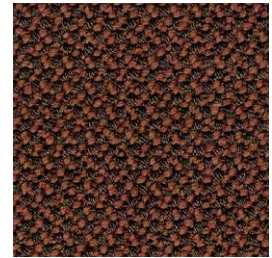
credo jasmin



credo walnut



credo black



credo kupfer



credo heart



credo pistazie

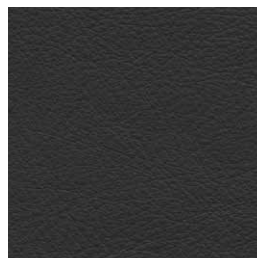
group 3 - elmosoft Elmo® leather



elmosoft 02020



elmosoft 93129



elmosoft 99999