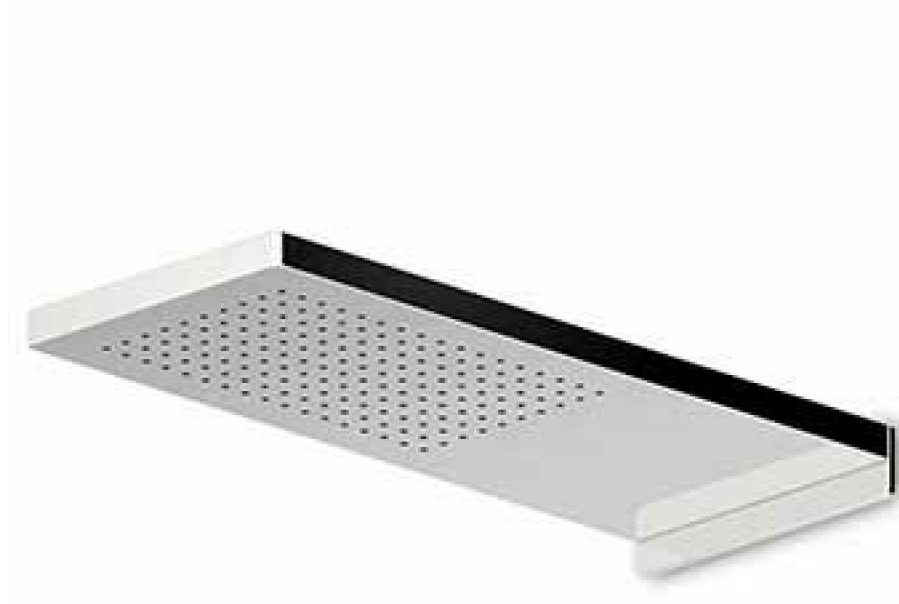


SHOWER

Z94153

Sistema doccia 240x570 mm a parete. / 240x570 mm wall mounted shower system.



Sistema doccia 240x570 mm in acciaio inox a parete con getto a pioggia. Portata minima richiesta 12 lt/min.

240x570 mm wall mounted stainless steel rain shower system. Minimum flowrate requested 12 lt/min.

Finiture / Finishes

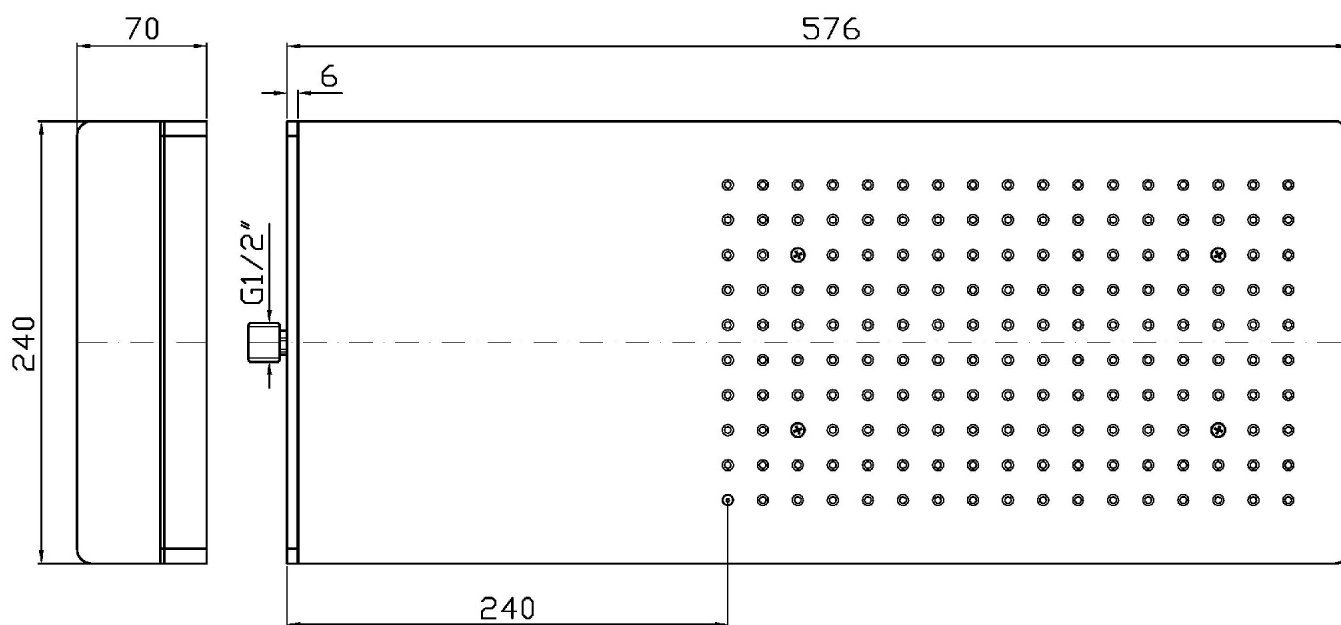


Cromo / Chrome

SHOWER

Z94153

Disegno Complessivo / Overall Drawing

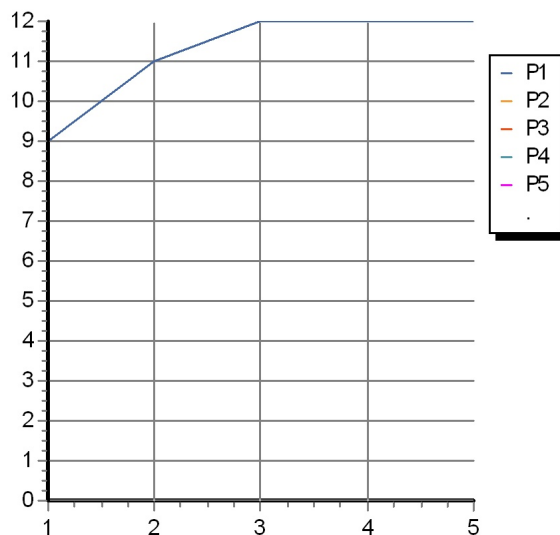


SHOWER

Z94153

Portate / Flowrates (lt/min)

PRESSIONE PRESSURE	1 BAR	2 BAR	3 BAR	4 BAR	5 BAR
SOFFIONE SHOWER HEAD <i>P1</i>	9	11	12	12	12
<i>P2</i>					
<i>P3</i>					
<i>P4</i>					
<i>P5</i>					



SHOWER

Z94153

Pesi e Misure / Weights and Sizes

Peso (Kg) Weight (lb)	10,10 (Kg)	22,27 (lb)
Volume test (dc3) - (in3)	21,09 (dc3)	1286,99 (in3)
h (mm) - (in)	100,00 (mm)	3,94 (in)
L1 (mm) - (in)	310,00 (mm)	12,20 (in)
L2 (mm) - (in)	680,00 (mm)	26,77 (in)

