

Reference

4105.

Application

Outdoor

Installation type

Surface

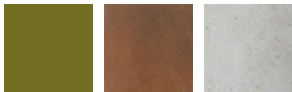
Description

Outdoor bollard light designed by Xuclà & Alemany. It gives a pleasant, subtle light through the methacrylate diffuser, and can withstand tough outdoor conditions. Available in khaki lacquer, oxide lacquer and concrete.

Diffuser

Acrylic diffuser

Finish

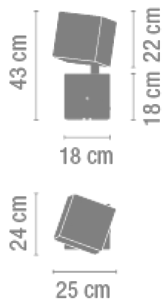


4105-07.
Khaki lacquer

4105-54.
Oxide-brown
lacquer

4105-80.
Concrete

Sketch

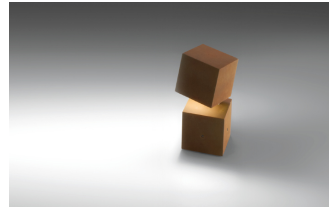


Electrical characteristics

1 x COMPACT FLUORESCENT E27 230V 15W



Total 15 W



Physical characteristics

1 Box / 0.51 x 0.35 x 0.34 m. / Vol. 0.0598 m³ /
Gross weight 7.6 kg. / Net weight 4.7 kg.

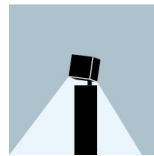
Installation and assembly

Follow instructions of the installation guide

Light distribution

Ground lighting

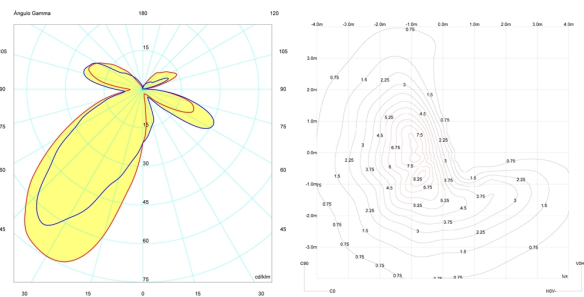
Reduced-height outdoor lamp to shade light on the ground.



Photometric data

Efficiency : 23.00%
Coordinate system : C-G
Total flux : 900.00 lm
Maximum value : 82.36 cd/klm
Light position : C=150.00 G=30.00
Double symmetrical : 2

Isolux : Isolux (suelo)
Light position :
X=0.00m Y=0.00m Z=3.00m
Light rotation :



Certificates

