

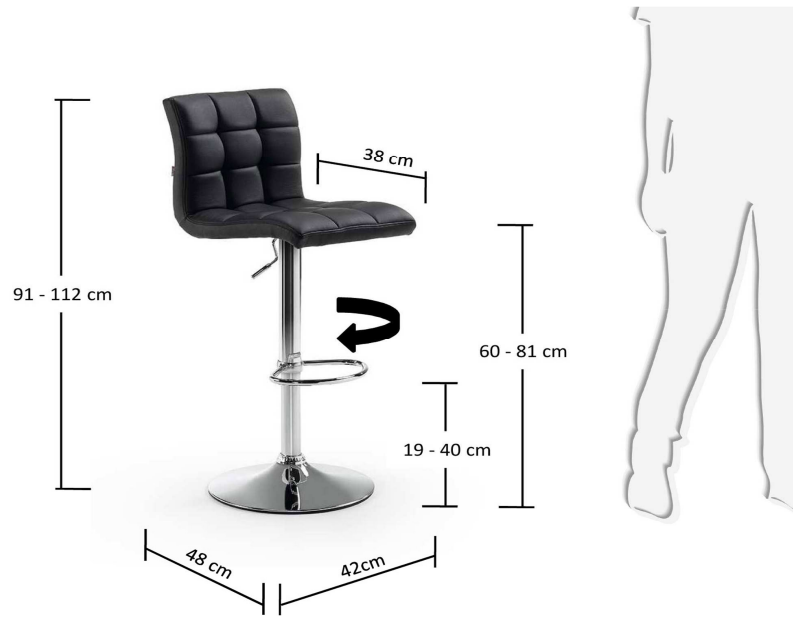


LODI

|                     |  |
|---------------------|--|
| product code        | C052U01  |
| product description | LODI Barstool metal chrome Pu black<br>Barstool in synthetic leather. Swivel and liftable chromed leg. |

|                             |                    |
|-----------------------------|--------------------|
| <b>product sizes</b>        |                    |
| height x width x depth (cm) | 91 - 112 x 42 x 48 |
| product weight (Kg)         | 8                  |
| seat height (cm)            | 60 - 81            |
| seat depth (cm)             | 38                 |
| armrest height (cm)         |                    |

technical drawings

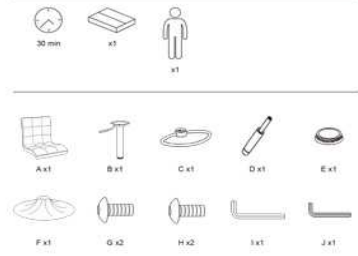
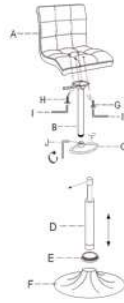


|                            |          |
|----------------------------|----------|
| <b>product features</b>    |          |
| use (domestic/office)      | Domestic |
| appliance (inner/outer)    | Inner    |
| stackable (yes/no)         | No       |
| adjustable height (yes/no) | Yes      |
| foldable (yes/no)          | No       |
| swivel (yes/no)            | Yes      |
| max. load (Kg)             | 130      |

|                           |                  |
|---------------------------|------------------|
| seat material             | Plywood and foam |
| seat finishing            | PU               |
| seat density foam (kg/m3) | 24               |
| seat detachable (yes/no)  | No               |
| seat grammage (g/m2)      | 350              |

|   |   |
|---|---|
| backrest material                         | Plywood and foam  |
| backrest finishing                        | PU  |
| backrest density foam (kg/m3)             | 24  |
| backrest detachable (yes/no)              | No  |
| backrest grammage (g/m2)                  | 350   |
| legs material                             | Steel   |
| legs finishing                            | Chromed   |
| feet protection (yes/no)                  | Yes   |
| adjustable feet (yes/no)                  | No  |
| armrest (yes/no)                          | No  |
| armrest material                          |   |
| armrest finishing                         |   |
| armrest density foam (kg/m3)              |   |
| armrest detachable (yes/no)               | No  |
| armrest grammage (g/m2)                   |   |
| RAL Specifications                        | RAL EFFECT (E2): RAL 790-4 // RAL CLASSIC (K5): RAL 9004  |
| castors information                       |   |
| footrest included                         | No  |
| size and shape variation (yes/no)         | No  |
| color variation (yes/no)                  | No  |
| other details                             |   |
| general warnings                          | Do not place near direct sources of heat. Keep away from direct solar light. Do not use abrasive products like acetones, bleaches, solvents, etc. |
| specific use and care instructions        | Clean with a damp cloth and dry immediately   |
| years of guarantee                        | 2   |
| made according to                         | Manufactured according to EN-12520:2015 for household use seats.  |
| good to know                              |   |
| <b>assembly</b>                           |   |
| assembly required (yes/no)                | Yes   |
| difficulty of assembly (hard/medium/easy) | Easy  |
| assembly time (min)                       | 30  |
| people required                           | 1   |
| assembly suggestions                      | Remove the plastic cap before assembling  |

assembly instructions



4

C052

C052

5

**packaging**

|                              |             |
|------------------------------|-------------|
| units per lot                | 2           |
| cbm (m3) / gross weight (Kg) | 0,067 / 9,2 |
| nº of boxes                  | 1           |

|  |                                     |
|--|-------------------------------------|
| box 1  | 1                                   |
| description                                    | LODI Barstool metal chrome Pu black |
| description box                                | FULL ITEM                           |
| height x width x depth (cm)                    | 44 x 61 x 50                        |
| cbm (m3) / gross weight (Kg) / net weight (Kg) | 0,067 / 9,2 / 8                     |

|  |       |
|--|-------|
| box 2  |       |
| description                                    |       |
| description box                                |       |
| height x width x depth (cm)                    | x x x |
| cbm (m3) / gross weight (Kg) / net weight (Kg) | / /   |