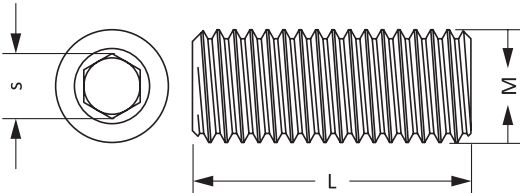


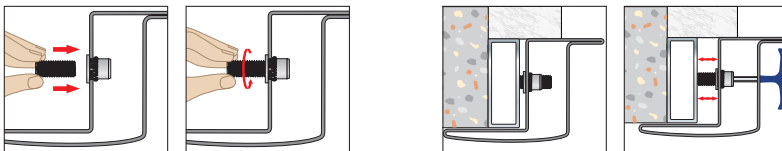
XA31 Grano con cava esagonale passante, in alluminio



SCHEDA TECNICA



M	diametro grano
L	lunghezza grano
s	Misura cava esagonale
T_{inst}	coppia massima di serraggio
N_k	carico caratteristico di rottura a trazione
V_k	carico caratteristico di rottura a taglio



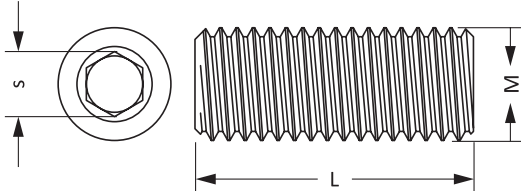
DATI TECNICI E RISULTATI DI PROVA SU VITI XA 31

Codice Articolo	Misura Grano <i>M x L (mm)</i>	s <i>(mm)</i>	T _{inst} <i>(Nm)</i>	N _k <i>(kN)</i>	V _k <i>(kN)</i>
cava esagonale passante (s): 6 mm					
XA 31 12 020	M12 x 20	6	18	9	4,5
XA 31 12 030	M12 x 30				
XA 31 12 040	M12 x 40				

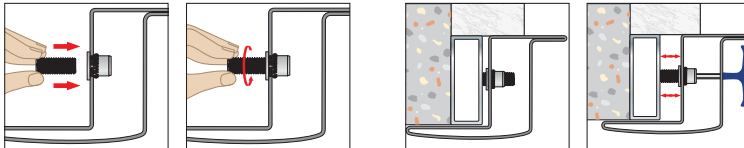
XA31 Full hexagon socket set screw, in aluminium



TECHNICAL DATA SHEET



M	diameter
L	length
s	hex recess
T_{inst}	recommended setting torque
N_k	Characteristic breaking tensile load
V_k	Characteristic breaking shear load



TECHNICAL DATA AND TEST RESULTS ON XA 31 SCREWS

Item Code	Size <i>M x L (mm)</i>	<i>s</i> (mm)	T_{inst} (Nm)	N_k (kN)	V_k (kN)
hex recess (s): 6 mm					
XA 31 12 020	M12 x 20	6	18	9	4,5
XA 31 12 030	M12 x 30				
XA 31 12 040	M12 x 40				