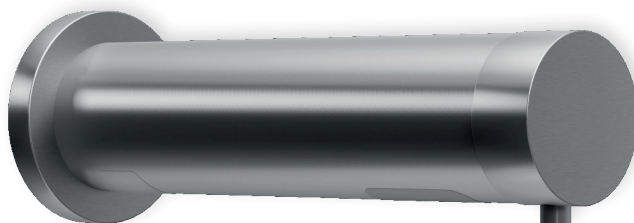


## S260

## Electronic soap dispenser

The S260 electronic wall-mounted sensor soap dispenser is designed for an installation on a dry wall or panel with permanent access to the mounting tail/nut for servicing and/or repairs. Suitable for all types of sanitary facilities thanks to its multiple choice of finishes and its minimalist look.



References	Power supply	Finishes
S260-S_SEC	Mains	Brushed stainless steel
S260-B_SEC	Mains	Polished brass finish
S260-N_SEC	Mains	Matte black finish
S260-S_BAT	Battery	Brushed stainless steel
S260-B_BAT	Battery	Polished brass finish
S260-N_BAT	Battery	Matte black finish

### Characteristics

Finishes	Brushed stainless steel (S)/Polished brass finish (B)/Matte black finish (N)
Dimensions	Ø28xL150mm
Viscosity	100–3800 cPs
Type of soap	All types, except microbead soap
Soap dose	1.4cc (adjustable with remote control)
Soap tank	1 Litre
Sensor range	35-155mm (adjustable with remote control)
Power supply	Adaptor 12V (_SEC)-cable length 5M Battery case IP67 (_BAT)-cable length 0.50M batteries not included-6 x Alkaline D batteries
Length of cable from rear of dispenser	1.30M (possibility to add cable extension(s))
Supply hose length	0.90M–distance between soap dispenser and tank
Warranty	5 years

## Optional accessories

---

SSP06001026	Power splitter with 2 outputs
SSP06001027	Power splitter with 3 outputs
SSP06001028	Power splitter with 4 outputs
SSP06009016	Electrical cable male-female extension 1 meter
SSP06009021	Electrical cable male-female extension 3 meters
SSP07100014	Remote control for electronic soap dispensers
SSP06530013	Junction box 230/12V for connecting up to 10 soap dispensers
RSP06000084	Output cable for junction box female connector

## Installation info

---

### Wall cut-out

The S260 is designed to be installed through a partition where there is a technical duct and/or permanent access to the mounting tail/nut for servicing and/or repairs. Drill a 23 to 24mm hole where you want to install the spout of the faucet, and a small 2 to 3mm diameter hole just above in the centre line of the previous one for the anti-rotation pin (contact us for the cutting plan [contact@duten.fr](mailto:contact@duten.fr)). It is always advisable to use thread lock when tightening the nut.

### Planning of sanitary facilities

To avoid reflection problems, do not install the sensor directly opposite other faucet/soap dispenser sensors, other infrared devices or a reflective surface such as a stainless steel surface. The choice of other accessories must also be taken into consideration, such as the finish of the waste drain which may reflect light and interfere with the sensor. Particular care must also be taken in positioning the light in the room, especially with tap sensors that are directed downwards. A distance of at least 300mm should be maintained between the sensor and the bottom of the washbasin.

## Maintenance

---

Never use products containing hydrochloric acid, formic acid, acetic acid or bleach containing chlorine. Never use abrasive products or tools (scouring liquid, scouring sponge, dish sponge, stainless steel ball, etc.). Use of any prohibited cleaning or maintenance products or substances could damage the surface of the soap dispenser. Only use soap and water when cleaning the surface of the taps and then wipe dry with a clean cloth or towel. When cleaning other areas of the washroom, the faucets should be protected from any splattering of the products that are used.

## Certifications

---

CE

## Related products

---

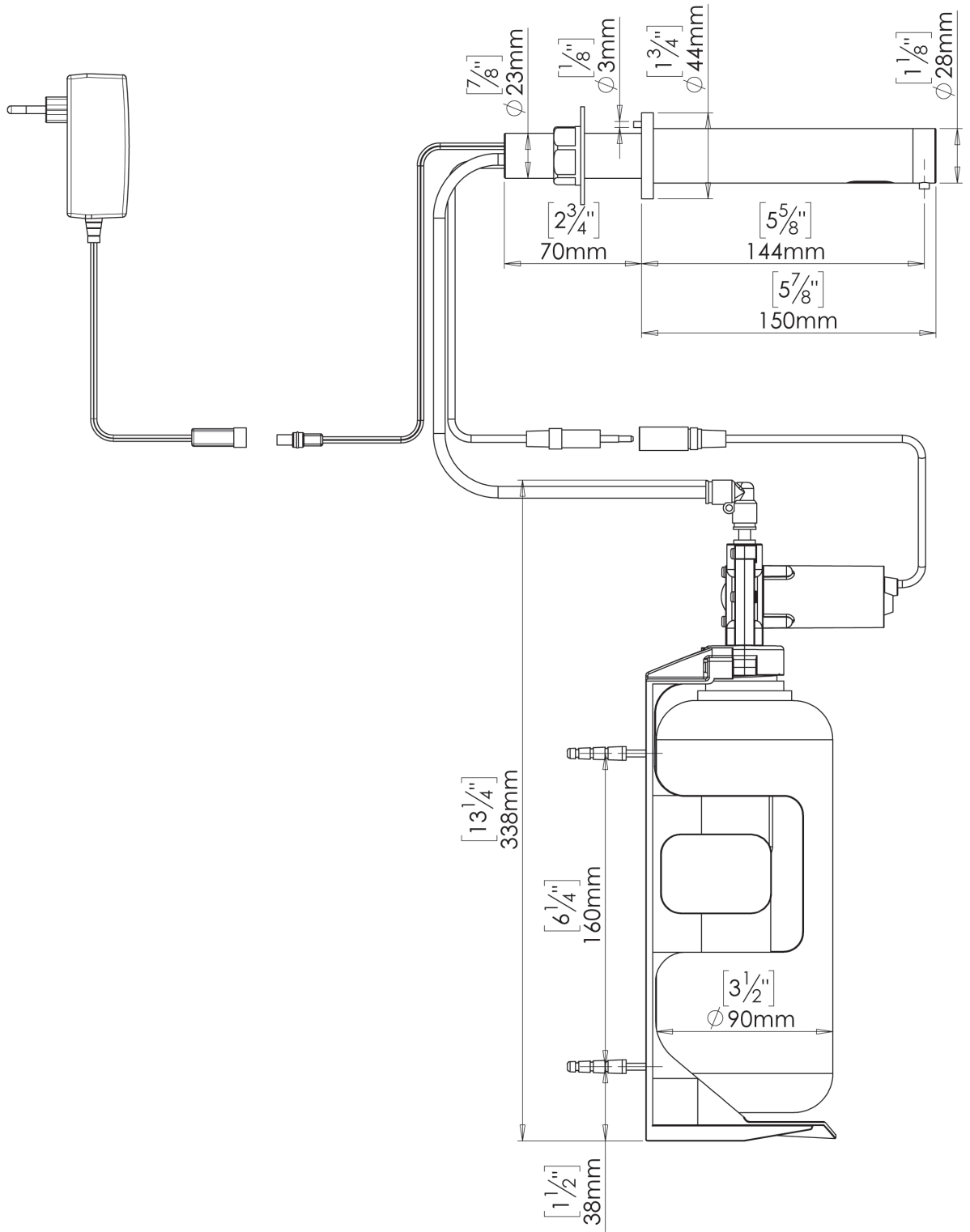
Tap	R360
-----	------

## Related documents

---

Installation manuel	<a href="mailto:contact@duten.fr">contact@duten.fr</a>
Certifications	<a href="mailto:contact@duten.fr">contact@duten.fr</a>

Technical diagram-mains version



Technical diagram-battery version

