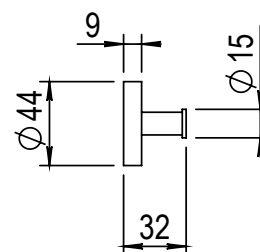
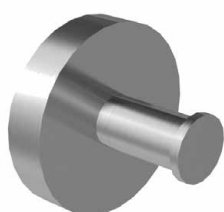


Réf. **81.613**

Porte manteau



CARACTÉRISTIQUES

Porte manteau
Robe hook

FINITION USUELLE



IX Inox Brossé Mat
Matt Stainless Steel

FINITIONS PVD



CR Cuivre Rose Brossé Mat
Matt Pink Copper



DB Doré Brossé Mat
Gold Brass



MG Canon de Fusil
Metal Gun

