



RIEDER

# NEW COLLECTION

NEW COLOURS . NEW TEXTURES . NEW FORMPARTS



**8** NEW  
**COLOURS**

**4** NEW  
**TEXTURES**

**23** MORE  
**TEXTURES**  
*on request*

NEW ÖKO SKIN  
**PLANKS**

**4** NEW COLOUR  
**COLLECTIONS** *greyscale, bricky,  
timber, natural stone (end of 2018)*

formparts.fab



Following current trends and developments, Rieder offers a range of individual building envelopes. In collaboration with architects and planners new colour collections and special textures were developed.



RIEDER

## concrete skin ■

The large-format panels are 13 mm thin and offer architects manifold opportunities in the design of individual facades, regarding colours, textures and forms.

*Sizes and textures*

width: 1200 - 1310 mm

length: 2500, 3100, 3600 mm

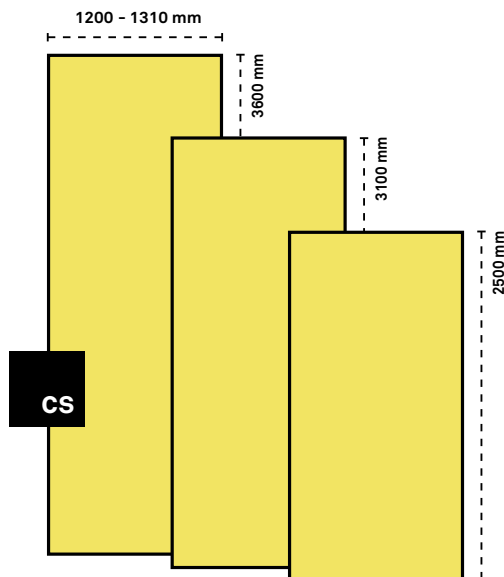
travertine, groove, crater, vintage

*Custom sizes and textures*

width: 1200 - 1500 mm

length: max. 4500 mm

23 more textures on request



## öko skin ■■■

With öko skin, Rieder is offering concrete facades in slat format. A vivid interplay of colours emerges through the variety of surfaces. In comparison to wood, öko skin is maintenance free.

*Sizes*

width: max. 302 mm

length: 1800 mm

*Custom sizes*

width: 70 - 302 mm

length: 700 - 2500 mm

## formparts ▭

The formed concrete elements, either formparts.fab or formparts.mono, with a monolithic appearance provide a high flexibility of architectural concrete and a wide range of design possibilities and act as refined privacy screen and sun protection.

# The material fibreC

authentic and natural



## CONCRETE IS ALIVE

Glassfibre reinforced concrete is a natural material and creates a special and vivid concrete facade. fibreC is durable and 100 % recyclable.



## ZERO WASTE

Through the zero waste initiative, the Rieder Group wants to accept its social responsibility. This includes reducing or avoiding pre and post consumer waste and optimising the product life cycle in a sustainable manner.



## CRYSTALLINE SILICA FREE POLICY

Rieder consistently implements the highest environmental and health standards and endeavours to minimise harmful and poisonous substances. The material is free of crystalline silica and without hazardous components.



## FIRE PROTECTION

The material guarantees absolute safety and fire resistance due to its excellent thermal properties (fire protection class A1 „non-combustible“ according to DIN 4102).

bricky



#NEWCOLOURS

## bricky

ös

CS

Inspired by traditional construction materials the new colour collection bricky has been created. The bricky collection is colourful and lively. It is based on red shades, which are reminiscent of the atmosphere of old brick houses.

[www.rieder.cc/bricky](http://www.rieder.cc/bricky)



timber





RIEDER

[www.rieder.cc/timber](http://www.rieder.cc/timber)


#NEWCOLOURS

## timber

The timber collection is inspired by the magnificent variety of nature's colours. The colour shades and smooth, sand-blasted or polished surfaces enhance the modern effect of glassfibre reinforced concrete. The new colour world is based on quiet, grounded shades of brown and a wooden look. It offers a mix of rustic style with a Scandinavian touch.

CS

ös







RIEDER

[www.rieder.cc/greyscale](http://www.rieder.cc/greyscale)



## greyscale

These seven colours are presenting the new greyscale collection. It emphasises the naturalness of the concrete material. The authentic appearance gives the material an unmistakable and honest character. The greyscale adds liveliness and depth to every facade.

CS

ös

fp

# texture travertine

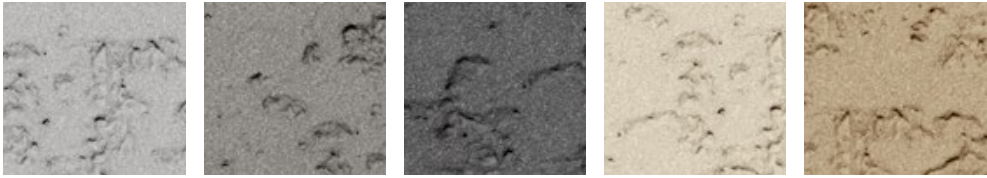




RIEDER

texture travertine

## #NEWTXTURES



## travertine

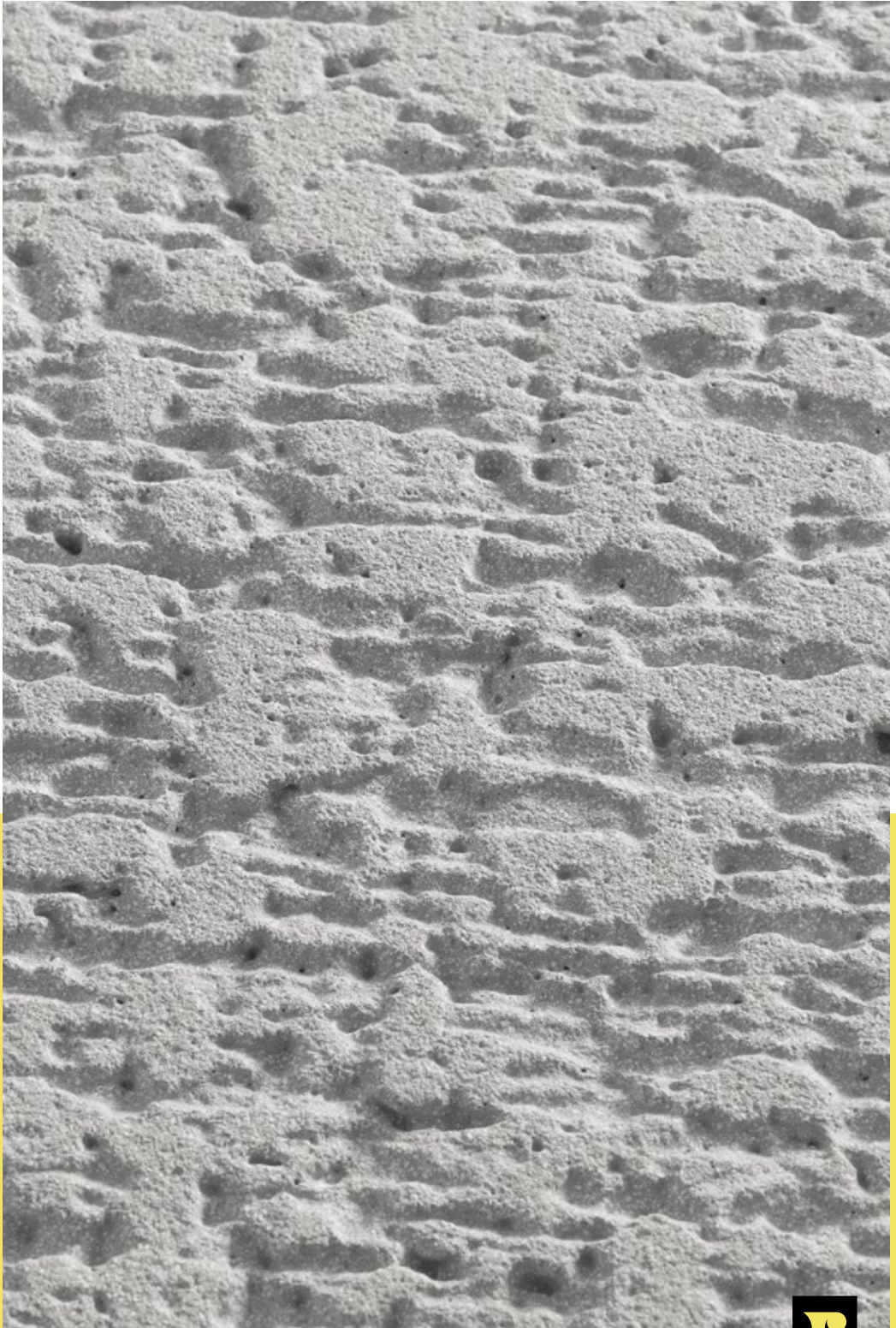
CS

The various rough structures create an exciting interplay of light and shadow that changes depending on the angle of view.

travertine is available as concrete skin panels with a 13 - 18 mm thickness in the colours ivory, silvergrey, anthracite, sahara and sandstone.

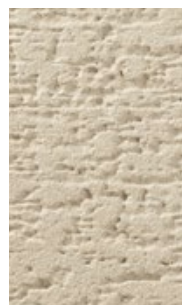
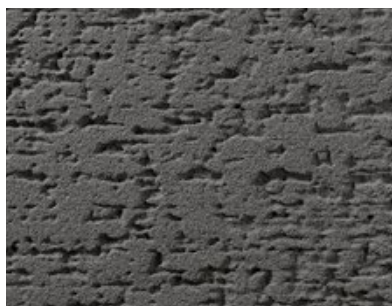
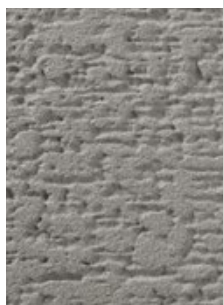
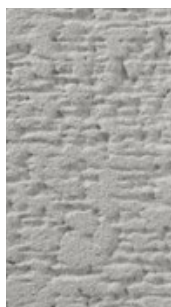
[www.rieder.cc/textures](http://www.rieder.cc/textures)

# texture crater





RIEDER



## crater

CS

The different characteristics better emphasise the naturalness of the concrete material and the authentic appearance.

crater is available as concrete skin panels with a 13 - 18 mm thickness in the colours ivory, silvergrey, anthracite, sahra and sandstone.

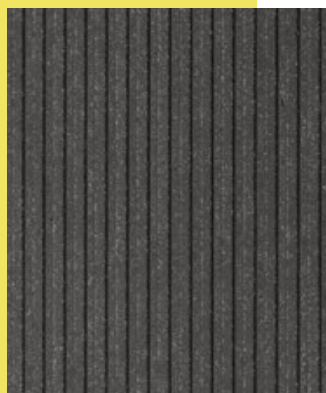
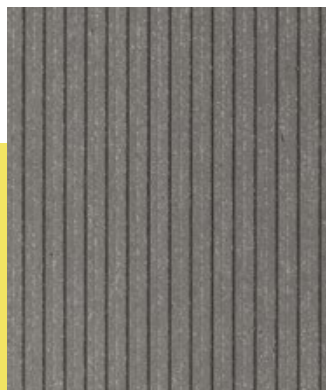
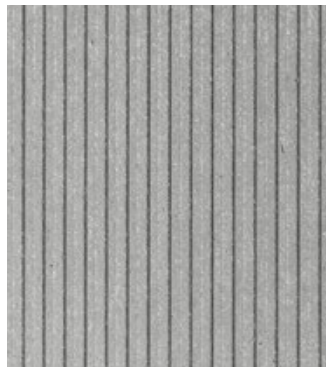
#NEWTEXTURES

# texture groove





RIEDER



CS

## groove

Accentuated lines in two different finishes ferro and ferro light, create a lively relief and set exciting highlights on every facade.

groove is available as concrete skin panels with a 13 - 15 mm thickness in the colours ivory, silvergrey and anthracite.

#NEWTXTURES



# texture vintage





RIEDER

## vintage

The natural imperfection and visual irregularity of the vintage panels give the facade a unique appearance and above all individuality, since no slab is like any other. The combination of traditional craftsmanship and new knowledge and the commitment to simplicity and naturalness is reflected in this new texture.

”

PARE DOWN TO THE ESSENCE,  
BUT DON'T REMOVE THE POETRY.

*Leonard Koren*

#NEWTXTURES

vintage is available as concrete skin panels and öko skin slats in anthracite.

CS

ös



## formparts.fab



The new, sharp-edged formparts.fab are the evolution of the formparts product. One of the benefits is that the maximum processing width is larger. In addition, a wider range of finishes and textures offer various design options. Rieder offers optional services, such as design development, facade optimisation, static calculations, mock-ups and more.

## #NEWFORMPARTS

*Length*  
**max. 4500 mm**

*Shapes*  
**L-, U- or  
 special forms**

*Thickness*  
**13 mm**

*Chamfer*  
**3 mm ± 1.5 mm  
 2 mm ± 1 mm (on request)**



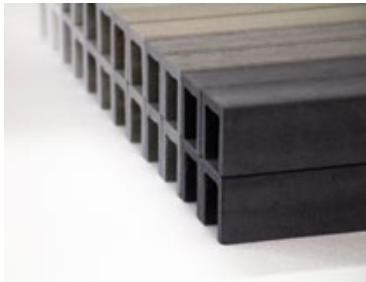
*mono vs. fab*



RIEDER

## formparts.mono

The curved elements are cut-to-measure as an individual piece. The shaped parts can be combined with large-format concrete skin facade panels.



Marine Base Amsterdam, Netherlands | Bureau SLA

*Processing width*  
**max. 1500 mm**

*Length*  
**max. 4500 mm**

*Shapes*  
**L-, U-, C- or special forms**

*Thickness* **13 mm**

*Radius*  
**3 - 8 mm (Range S)**  
**8 - 12 mm (Range M)**  
**12 - 15 mm (Range L)**



RIEDER

## Endless possibilities

The new water jet system offers even more flexibility when cutting and thus countless new opportunities for creative ideas.

#NEWFACADES



CS



## öko skin planks

#NEWFACADES



ös

The new öko skin planks with three different widths enable architects numerous possibilities in slatted design. They are available in widths of 70, 147 and 302 mm and a length of 3100 mm (3600 mm on request).

# CONCRETE

