

RIEDER

con  
crete  
treated  
sures

north america edition

# a treasure map of concrete facades

The development of fibreC glassfibre reinforced concrete was inspired by Rieder's vision of a concrete cladding panel that is both stable and light-weight. The aesthetic panels with only 13 mm thickness give architects plenty of scope in the design of individual facades. Glassfibre reinforced concrete is non-combustible and made of mineral-based raw materials, giving the panels their unique characteristics. Besides the large-format panels concrete skin Rieder also distributes öko skin slats and formed concrete elements with integrated fastening called formparts. The combination of sustainable products provides an economical solution for the entire building envelope.

The products are available in various colors and textures. They add liveliness and depth to any facade. The different structures create an exciting interplay of light and shadow that changes depending on the angle of view. The diverse characteristics better emphasize the naturalness of the concrete material and the authentic appearance.



## Solstice on the Park Chicago

*concrete skin / sahara, sandstone, anthracite, liquid black / ferro*

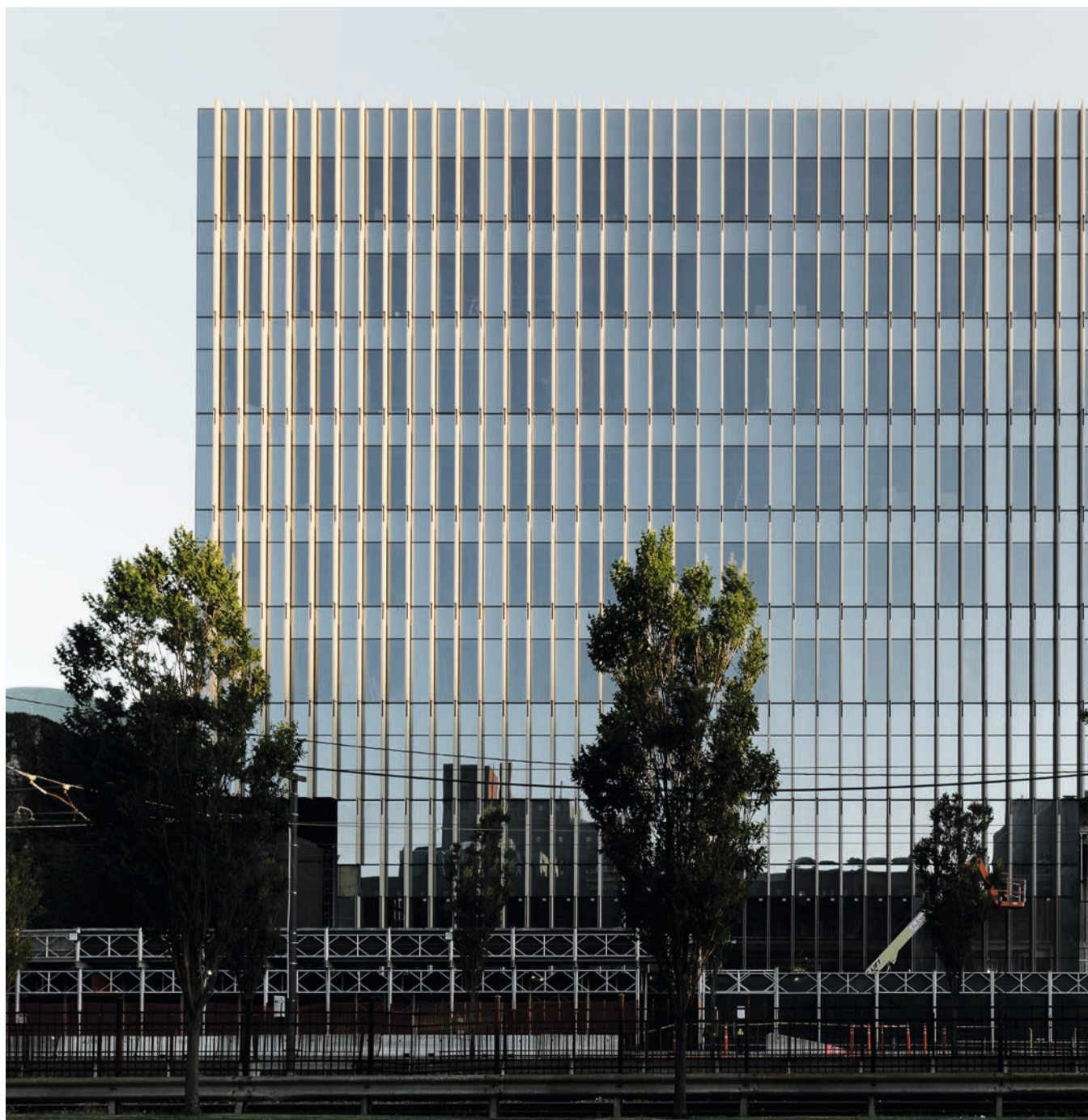
STUDIO GANG





**Harrison Common New Jersey**  
*concrete skin / off-white, liquid black / ferro light*  
MINNO & WASKO ARCHITECTS & PLANNERS

**Boston University**  
**CENTER FOR INTEGRATED LIFE SCIENCES AND ENGINEERING**  
*formparts, concrete skin / sandstone, liquid black / ferro, ferro light*  
PAYETTE



# zero waste



Rieder's aim is to reduce or avoid pre- and post-consumer waste and to optimize the product life cycle in a sustainable manner.



## Oberlin Gateway Center

*öko skin* / terra / ferro, ferro light, matt  
SOLOMON CORDWELL BUENZ SCB MI



## Dental Clinic KaTi Hibbing

*öko skin* / silvergrey, anthracite / ferro, ferro light  
YUNKER ASSOCIATES ARCHITECTURE



## Pan Am Toronto

*concrete skin* / polar white, anthracite / ferro light, matt  
DAOUST LESTAGE



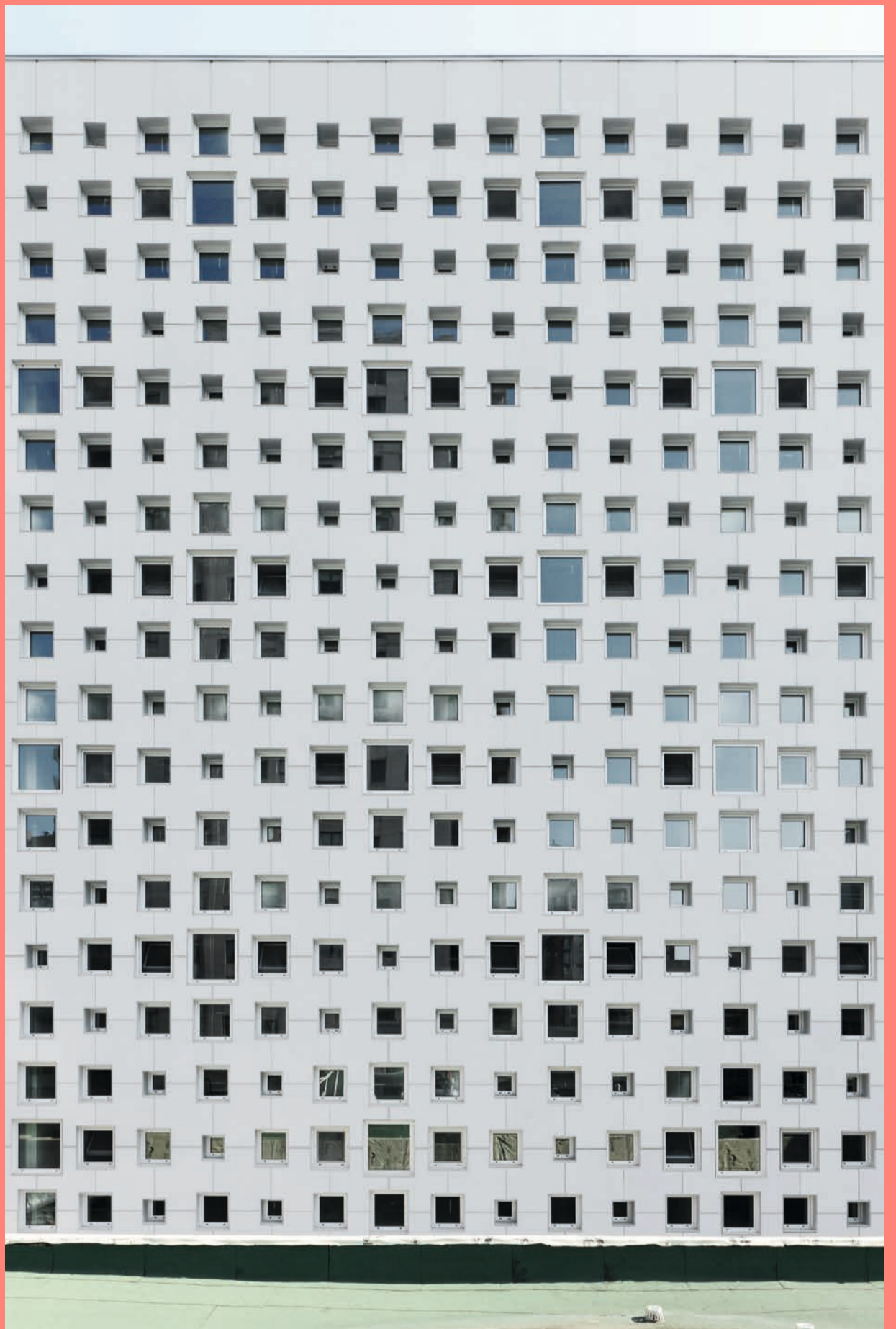
## Residence W. Toronto

*öko skin* / liquid black / ferro, ferro light, matt  
DIAMOND + SCHMITT ARCHITECTS INC.



a  
fine  
gent  
in a  
lace  
coat

The luxury hotel with its pixelated facade offers the theatrical backdrop for the history-charged Mount Stephen in Montreal. Lemay architects abstracted motifs from the interior of the heritage-protected Canadian landmark and, with the geometric arrangement of concrete skin elements created the perfect background for the new hotel complex that is the Canadian architectural jewel. The old part of the Mount Stephen Hotel, designed by architect William Titus Thomas, is a historic monument of Quebec.



**Le Mount Stephen Hotel Montreal**

*concrete skin / ivory / ferro*

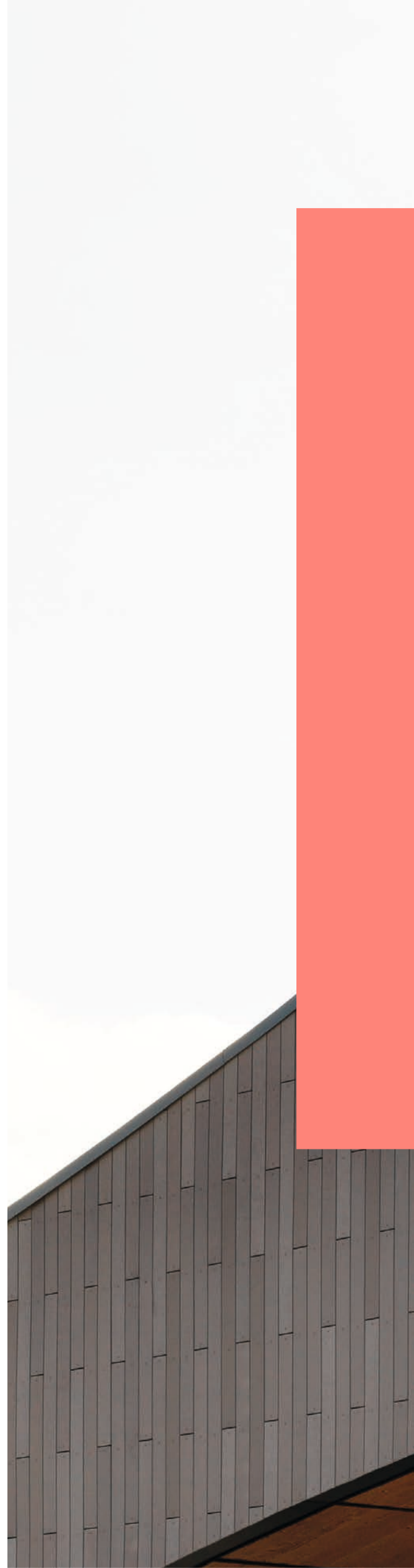
LEMAY ARCHITECTS





**St. Denis School Toronto**

*öko skin / special color*  
BORTOLOTTI ARCHITECTURE







# stay away from lonely places

by Ron Terada

**Titletown Sledding Pavilion Ashwaubenon**

*öko skin / terra / ferro, ferro light, matt*

ROSSETTI ARCHITECTS



### USTA Ticket Office New York

*öko skin* / special color / ferro, ferro light, matt  
ROSSETTI ARCHITECTS

### 710 Grand Chicago

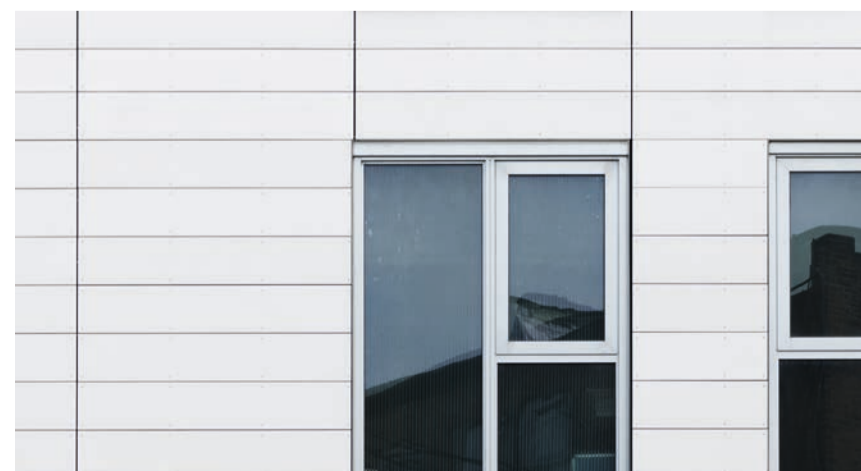
*öko skin* / polar white / ferro, ferro light, matt  
BRININSTOOL + LYNCH LTD.



**crystalline  
silica  
free**



Rieder consistently implements the highest environmental and health standards. The material is free of crystalline silica and without hazardous components.





### New Street Apartment Building Boston

*öko skin* / terra / ferro, ferro light **concrete skin** / anthracite / ferro, ferro light  
ADD INC.

### Maison des Aines de Terrebonne

*öko skin* / liquid black / ferro, ferro light



### Aspira Business & Finance High School Chicago

**concrete skin** / ivory / ferro light  
MODE ARCHITECTS

# öko skin as a canvas



Gravity, the unique live-work-play campus in the capital of the US state of Ohio, impresses with versatile design concepts and subtle visions. The architecture of the building complex is strongly influenced by its neighbourhood and echoes the artistic, versatile and sometimes angular atmosphere of the Franklinton district. NBBJ architects drew their inspiration for the exterior facade fitted with öko skin by Rieder from ship containers.

If you take a closer look at the Gravity Project you will get an immediate sense of the unusual vision behind it. The 5-storey high self-portrait of the Brazilian muralist Eduardo Kobra alone leaves a lasting impression.

## Gravity Project Columbus, Ohio

öko skin / off-white, anthracite / ferro, ferro light, matt  
NBBJ ARCHITECTS & ARCHITECTURAL ALLIANCE INC.



## Joliet Junior College Chicago

*öko skin* / liquid black / ferro, ferro light  
DEMONICA KEMPER ARCHITECTS



## Canada Goose, Park Hyatt Chicago

*öko skin* / liquid black / ferro, ferro light, matt  
*concrete skin* / liquid black, polar white / ferro, matt  
*formparts* / liquid black, polar white / ferro  
DAVID A. LEVY ASSOCIATES

## The Collegiate School New York

*concrete skin* / liquid black / ferro light  
KOHN PEDERSEN FOX ASSOCIATES PC





## fire protection



The material guarantees absolute safety and fire resistance (non-combustible ASTM fire rating).

### Primary school Sainte-Catherine-de-la-Jacques-Cartier

*öko skin / liquid black / ferro, ferro light, matt*

ABCP ARCHITECTURE





### Queen Street Toronto

*concrete skin / polar white, liquid black / ferro, matt*  
MONTGOMERY SISAM ARCHITECTS



### Sheridan College Oakville

*concrete skin / sandstone / ferro, matt*  
ROUNTHWAITE DICK & HADLEY ARCHITECTS



