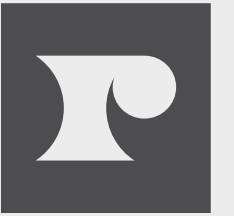


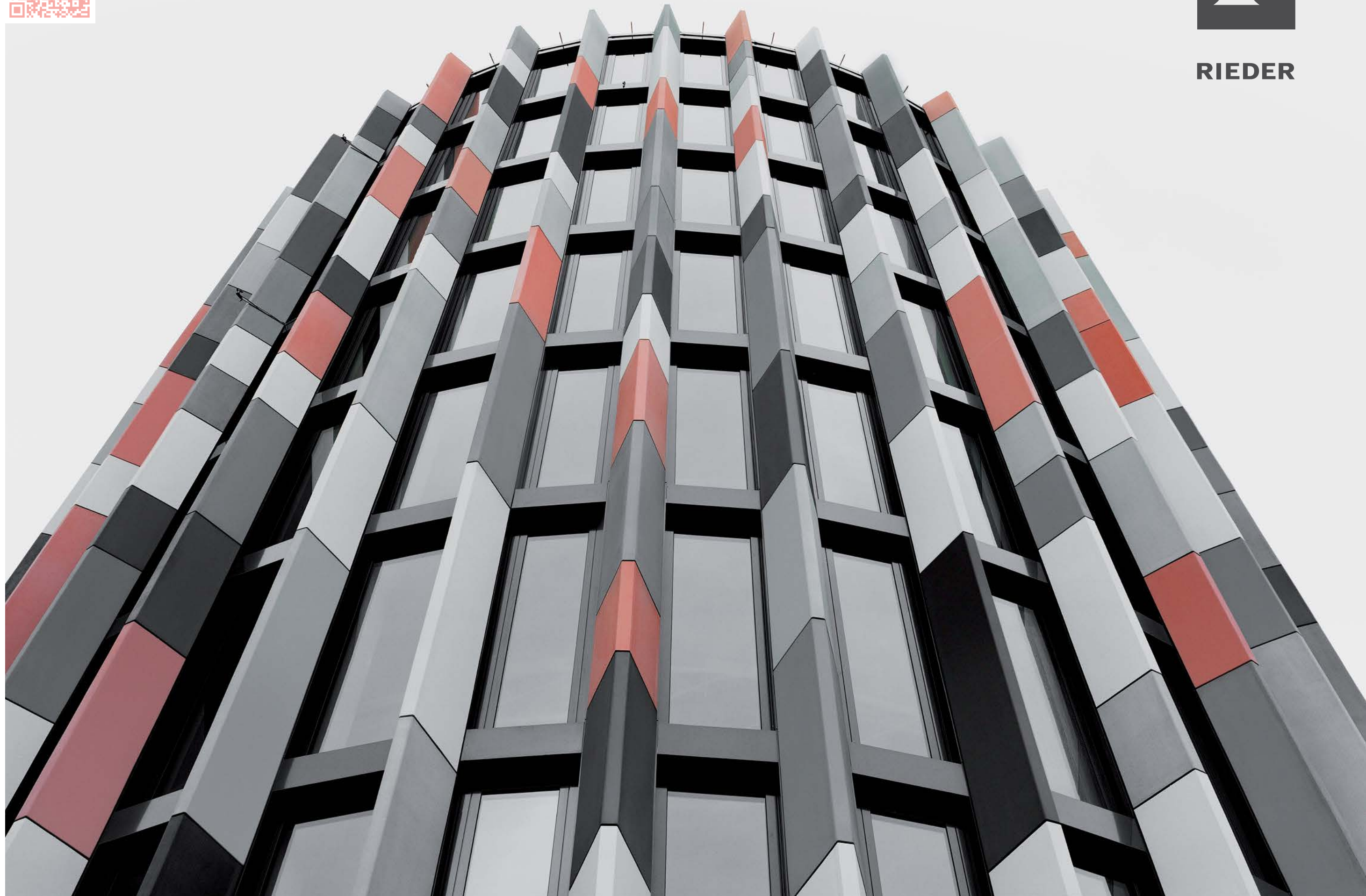
Rieder Smart Elements GmbH

Mühlenweg 22
5751 Maishofen
Austria

T: +43 6542 690 844
E-mail: office@rieder.cc
www.rieder.cc



RIEDER



LOOKBOOK



Please note: Subject to misprints and typesetting errors. Due to technical reasons printed colours may differ from the original shade. All information, logos, text, graphics and images within this document are subject to copyright. The processing and use in media is allowed only with prior written permission of Rieder.

Photo Copyrights: Ditz Fejer: 9-12, 16-18, 26-27, 30-31, 39-40, 43-44, 46, 50, 55-56, 61, 66, 69-74 | Rasmus Norlander: Cover, 2, 13-15, 19, 23-25, 28, 31-34, 41-42, 47-49, 51, 58, 63-65 | Jo Pesendorfer: 20 | Mike Huber: 29 | Daniel Lunghi: 35, 45 | paul ott fotografiert: 36 | Helene Binet: 52 | Fernando Guerra: 52 | Hertha Hurnaus: 59 | Gunter Bieringer: 60 | Scagliola Brakkee: 62

Graphic Design: Julia Bücheler | Rieder Smart Elements GmbH (07/2012)

Contact: For more details regarding products, application possibilities, planning, sales terms, prices etc. please consult your local fibreC sales partner or download the Technical Manual Facade on www.rieder.cc. You can find the contact details of your local sales person and the international partner network of Rieder on www.rieder.cc.

Sales:
Rieder Smart Elements GmbH | Mühlenweg 22 | 5751 Maishofen | Austria
T: +43 (0)6542 690 844 | F: +43 (0)6542 690 855 | E: office@rieder.cc

Production:
Rieder Faserbeton-Elemente GmbH | Bergstr. 3a | 83059 Kolbermoor | Germany
T: +49 (0)8031 90167 0 | F: +49 (0)8031 90167 169 | E: office@rieder.cc





Austria: Buddhist Center, Vienna | Bank BTV Mitterweg, Innsbruck | Cultural Center, St. Pölten | Domicilium, Linz | Frank Stronach Institute, Graz | Opera House, Bregenz | **Australia:** State Library, Sydney | Mudjee Tafe, Armidale | Villa Putty Beach, Killcare | Office Building 456 Lonsdale Street, Melbourne | Perth College, Mount Lawley | **Canada:** University of Windsor, Toronto | Sheridan College, Oakville | Centre for Sustainable Development, Montreal | Canmet Mc Master Innovation Park, Hamilton | Inuit Cultural Center, Clyde River | Ritchie Brothers Auction House, Vancouver | Faculty of Engineering, University of Waterloo, Waterloo | **Czech Republic:** Prosek Point, Prague | Main Point Karlin, Prague | **Cyprus:** Villa A, Limassol | **Finland:** Herttoniemi Metro Station, Helsinki | Hakaniemenkatu Apartments, Helsinki | **France:** Fashion Shop, Paris | Foyer Conde, Lyon | **Germany:** Hotel Ramada, Berlin | Coffee Plaza, Hamburg | Broadcasting Studio SWR, Stuttgart | Office Building GE 2, Munich | Pandion Vista, Cologne | **Great Britain:** Milton Park, Milton | St. Benedict's School, Ealing | Library University of Liverpool, Liverpool | Dumfries and Galloway College, Dumfries | Ikea, Coventry | Penywaun Primary School, Aberdare | **Hungary:** Buda-Cash Brokerhouse, Budapest | **Ireland:** Maldron Hotel Citywest Kingswood, Dublin | **Israel:** City Museum, Tel Aviv | Old City Hall, Tel Aviv | **Italy:** Apartments Via Salaino, Milan | Headquater Rainbow, Loreto | Banca Carim, Rimini | Primary School, St. Walburg | Villa P, Meran | Shopping Center, Castelfranco | Terraglio, Treviso | **Kuwait:** Villa A, Kuwait City | **Luxemburg:** Fashion Shop Grand Rue, Luxemburg City | Centre Orchimont, Howald | Justice de Paix, Esch/Alzette | Radiotherapy Center Artur GIE, Esch/Alzette | **Netherlands:** Hotel Novotel, Amsterdam | Dormitory Blok 1 Presikhaaf, Arnhem | Legro Helmond, Helmond | **Norway:** Holmenkollen Ski Jump, Oslo | **Poland:** Copernicus Science Center, Warsaw | P.A.N. University, Warsaw | TRIO Apartments, Warsaw | MOCAK Museum of Modern Art, Krakow | Shopping Center Renoma, Wroclaw | **Slovakia:** City Business Center, Bratislava | **South Africa:** Soccer City Stadium for FIFA Worldcup 2010, Johannesburg | **South Korea:** Villa Gwacheon-si, Seoul | **Spain:** Sant Joan De Reus University Hospital, Tarragona | Zaragoza Bridge Pavilion, Zaragoza | **Russia:** J&T Bank, Moscow | Villa E, St. Petersburg | Football Club School, Krasnodar | Villa P, Artyom | **United States of America:** The Standard Hotel, New York City | University of New Mexico, Cancer Center, Albuquerque | Miramar College, San Diego | Office Building Harrison Street, San Francisco | Verma Residence, Chicago | Butts-Mehre Heritage Hall, Athens | Northern Arizona University Wellness Center, Flagstaff | Helios Building of Lawrence Berkeley National Laboratory, Berkley | Limelight Networks, Tempe

[fibreC cladding panels]

The facade of a building is much more than a protective mantle. It also lends a building its distinct appearance and identity and is an essential component of architecture. The development of fibreC was inspired by Rieder's vision of a concrete cladding panel that is both stable and lightweight, able to withstand the effects of weather and environmental conditions and at the same time sustainable and aesthetic. fibreC – the name is an acronym of the words "glassfibre" and "concrete" – is a glassfibre-reinforced concrete panel that unites the advantages of both glassfibres and concrete. Glassfibre-reinforced concrete is made of purely mineral raw materials, which give the panels their unique characteristics. The authentic appearance creates a vivid facade.

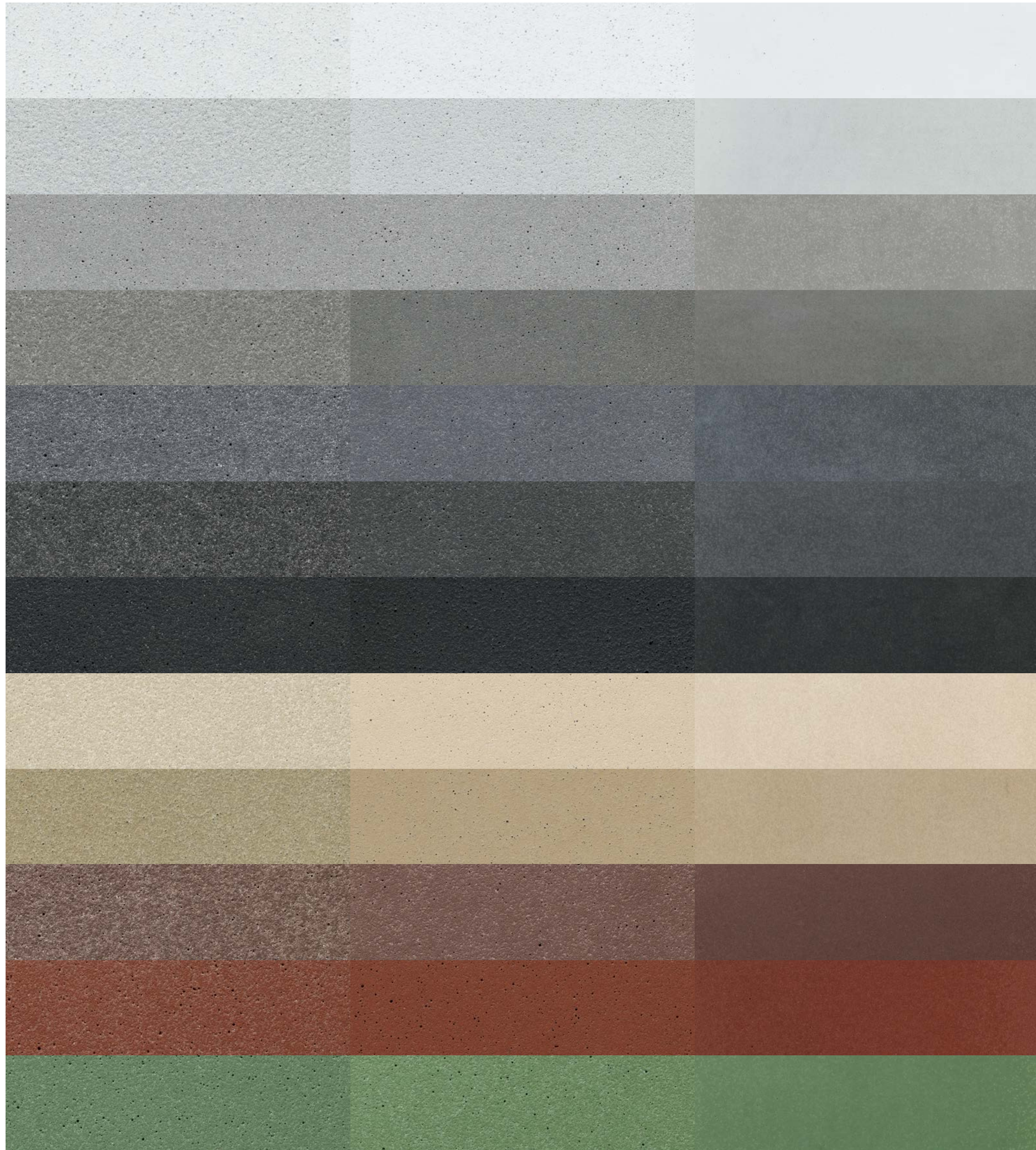
[fibreC Fassadenplatten]

Die Fassade ist nicht nur die schützende Haut eines Gebäudes. Sie gibt ihm gleichzeitig sein Erscheinungsbild und Identität und ist daher elementarer Bestandteil von Architektur. Die Vision einer dünnen und zugleich stabilen Fassadenplatte aus Beton, die Umwelteinflüssen stand hält und dabei nachhaltig und ästhetisch ist, prägte Rieder bei der Entwicklung von fibreC. fibreC (abgeleitet von engl. „glassfibre“ und „concrete“) ist eine mit Glasfasern verstärkte Betonplatte, welche die Vorteile von Glasfasern und Beton in sich vereint. Glasfaserbeton besteht aus mineralischen Rohstoffen, die einen einzigartigen Materialcharakter erzeugen. Das authentische Erscheinungsbild erzeugt eine Lebendigkeit an der Fassade.

FE Ferro

FL Ferro Light

MA Matt



Polar White
Polar White

Off-White
Off-White

Ivory
Elfenbein

Silvergrey
Silbergrau

Chrome
Chrome

Anthracite
Anthrazit

Liquide Black
Liquide Black

Sahara
Sahara

Sandstone
Sandstein

Terra
Terra

Terracotta
Terracotta

Green
Grün

fibreC facade panels are available in three standard sizes: 2500 x 1200 mm, 3100 x 1200 mm and 3600 x 1200 mm. The large-format panels are 13 mm thin and give architects plenty of scope in the design of individual facades. The panels can be produced in any requested dimensions up to the maximum standard size. Rieder offers cutting-waste optimization for project-specific dimensions. The panels are dyed throughout with natural colour pigments and are available in 12 different colours and three surface textures - FE Ferro (sandblasted), FE Ferro Light (sandblasted at lower pressure) and MA Matt (brushed, smooth surface), with countless creative possibilities with regard to colour, structure and form.

fibreC Fassadenplatten sind in drei Standardformaten erhältlich: 2500 x 1200 mm, 3100 x 1200 mm und 3600 x 1200 mm. Die großformatigen Platten sind 13 mm dünn und öffnen einen großen Spielraum für die Gestaltung individueller Fassaden. Innerhalb der maximalen Standardgröße ist das Format frei konfektionierbar. Für projektbezogene Aufmaße bietet Rieder eine Verschnittoptimierung. Die Platten sind mit natürlichen Farbpigmenten vollständig durchgefärbt und bieten in 12 Farben mit je drei Oberflächenprägungen FE Ferro (sandgestrahlt), FE Ferro Light (leicht sandgestrahlt) und MA Matt (glatt) zahlreiche Möglichkeiten für den kreativen Umgang mit Farbe, Struktur und Form.



Technical Data
Technische Daten

[Concrete with character]

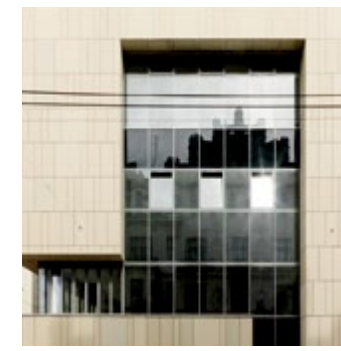
Concrete is a natural product and Rieder sees it as such, with all its vital signs and characteristics. Only natural raw materials are used for the production of fibreC to ensure the authenticity of this sustainable product. Lively surfaces with an interplay of colour shades and light cloud effects, rather than dead and clinical surfaces are characteristic of fibreC and appeal to our senses. The structure of fibreC, which is typical for concrete, gives the material an unmistakable, honest character.

[Beton mit Charakter]

Beton besteht aus natürlichen Rohstoffen und wird von Rieder auch als Naturprodukt verstanden. Deshalb wird bei der Produktion von fibreC ebenfalls mit natürlichen Rohstoffen gearbeitet, um die Authentizität des nachhaltigen Produktes zu wahren. Lebendige Oberflächen mit einem Wechselspiel an Farbschattierungen und Wolkeneffekten anstatt toter Oberflächen sind für fibreC charakteristisch und betonen die Sinnlichkeit des Materials. Die betontypische Struktur verleiht dem Werkstoff einen unverwechselbaren, ehrlichen Materialcharakter.

[COMPROMISE COMES FROM
A FEAR OF BEING PURE] Eero Saarinen





Buddhist Center Vienna, AT | Moser Architects Vienna, AT | 800 m² fibreC facade | silbergrey & sandstone | FE | adhesive
Buddhistisches Zentrum Wien, AT | Moser Architekten Wien, AT | 800 m² fibreC Fassade | silbergrau & sandstein | FE | geklebt



Hydropower Plant Neubruck Scheibbs, AT | Juland Barcelona Vienna, AT | 550 m² fibreC facade | anthracite | FL & MA | riveted
Kraftwerk Neubruck Scheibbs, AT | Juland Barcelona Vienna, AT | 550m² fibreC Fassade | anthrazit | FL & MA | genietet

Swarovski Business Building Wattens, AT | Malojer Construction Management Innsbruck, AT | 1,000 m² fibreC facade | anthracite | FE | undercut anchors
Swarovski Bürogebäude Wattens, AT | Malojer Baumanagement Innsbruck, AT | 1.000 m² fibreC Fassade | antrazit | FE | Hinterschnittanker



Copernicus Science Center Warsaw, PL | RA-2 Laboratorium Architektury Gilner + Kubec Warsaw, PL | 13,000 m² fibreC facade | various colours | MA | riveted
Kopernikus Wissenschaftszentrum Warschau, PL | RA-2 Laboratorium Architektury Gilner + Kubec Warschau, PL | 13.000 m² fibreC Fassade | diverse Farben | MA | genietet

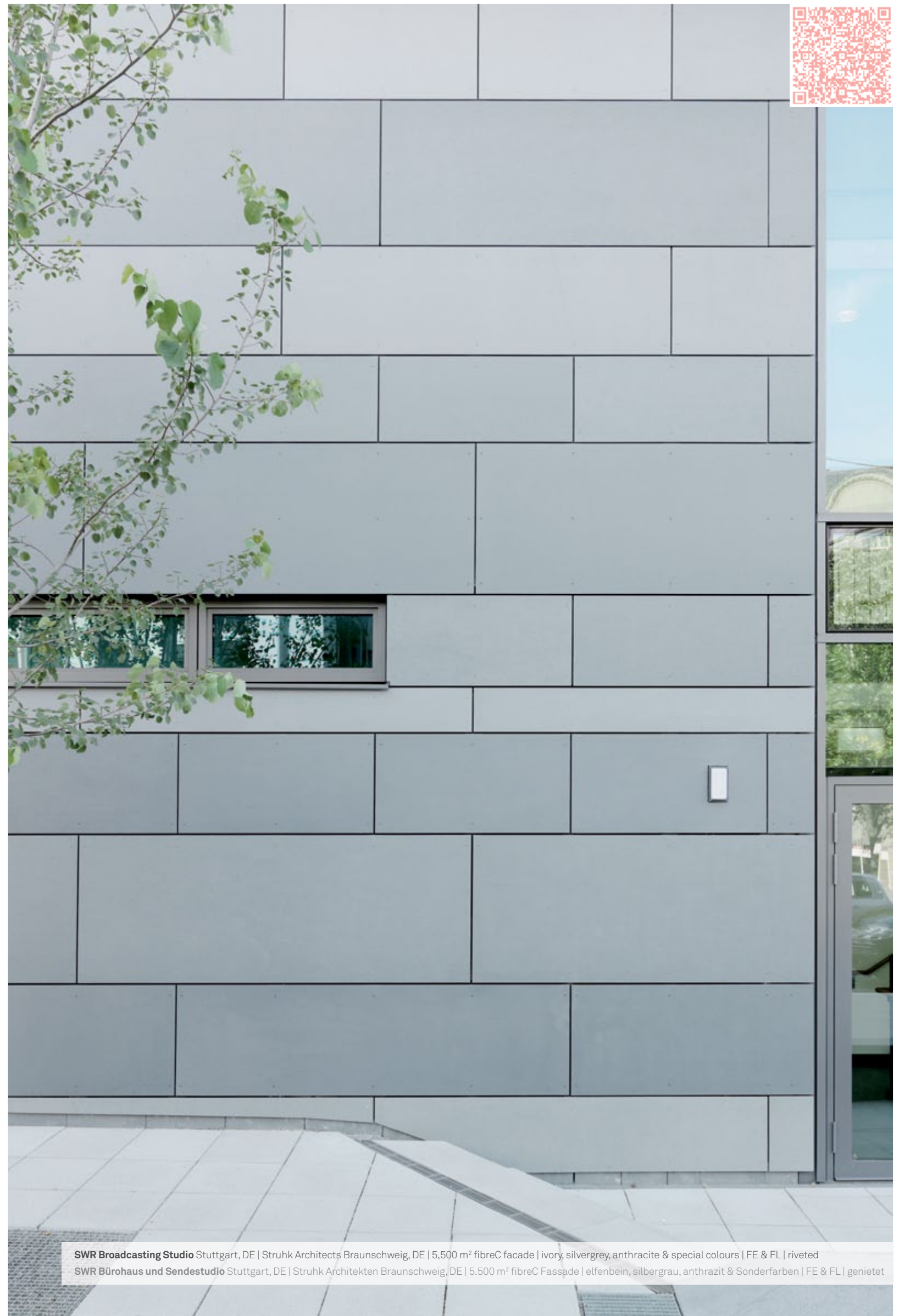
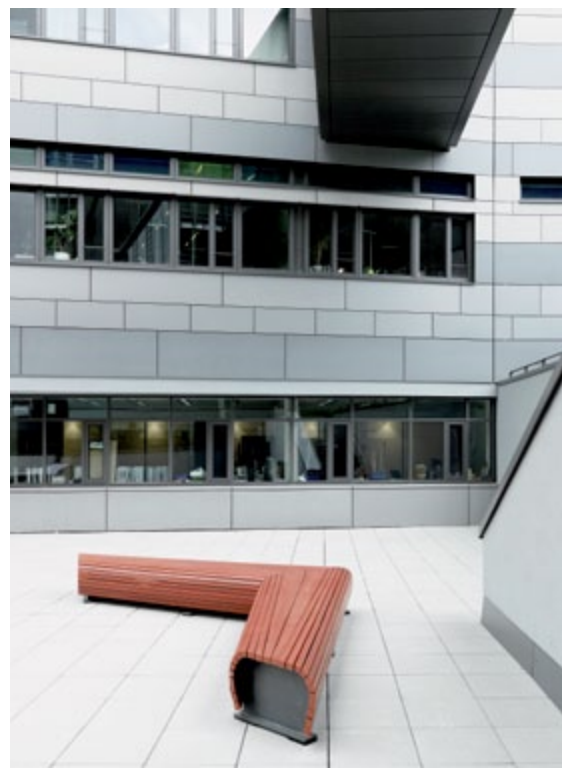




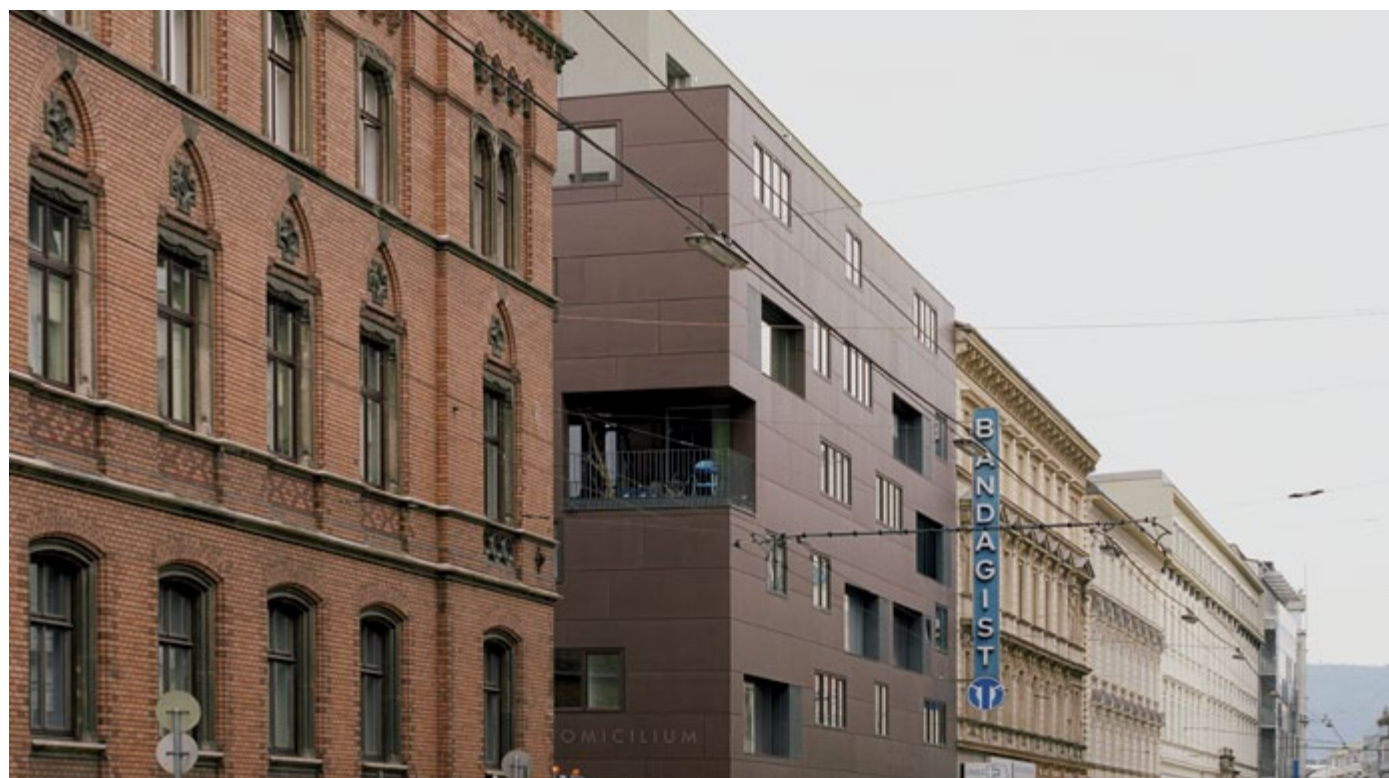
TRIO Apartments Warsaw, PL | JEMS Architects Warsaw, PL | 13,000 m² fibreC facade | sandstone | MA | riveted
 TRIO Wohngebäude Warschau, PL | JEMS Architekten Warschau, PL | 13,000 m² fibreC Fassade | sandstein | MA | genietet



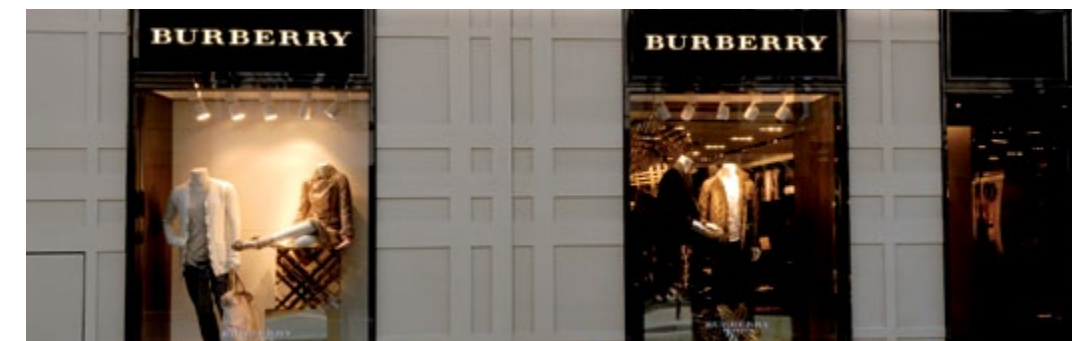
Hotel Sonne Dornbirn, AT | Huber Planungsgesellschaft Dornbirn, AT | 300 m² fibreC facade | terra | FL | riveted & screwed
 Hotel Sonne Dornbirn, AT | Huber Planungsgesellschaft Dornbirn, AT | 300 m² fibreC Fassade | terra | FL | genietet & geschraubt



SWR Broadcasting Studio Stuttgart, DE | Struhk Architects Braunschweig, DE | 5,500 m² fibreC facade | ivory, silvergrey, anthracite & special colours | FE & FL | riveted
SWR Bürohaus und Sendestudio Stuttgart, DE | Struhk Architekten Braunschweig, DE | 5,500 m² fibreC Fassade | elfenbein, silbergrau, anthrazit & Sonderfarben | FE & FL | genietet



Domicilium Linz, AT | Riepl Riepl Architects Linz, AT | 1.200 m² fibreC facade | terra | MA | adhesive
 Domicilium Linz, AT | Riepl Riepl Architekten Linz, AT | 1.200 m² fibreC Fassade | terra | MA | geklebt



Fashion Shop Rue du Dragon Paris, FR | Ganter Interior GmbH Waldkirch, DE | 110 m² fibreC facade | sandstone | FE | undercut anchors
 Fashion Shop Rue du Dragon Paris, FR | Ganter Interior GmbH Waldkirch, DE | 110 m² fibreC Fassade | sandstein | FE | Hinterschnittanker



[Sustainable]

Concrete is a sustainable material suitable for leading-edge, future-oriented architecture. This building material embodies durability and stability of value. The ecological idea behind concrete is consistently implemented in the manufacturing of fibreC. Unlike other facade materials, such as fibre cement, aluminium or HPL, the production of fibreC requires a low amount of primary energy, which in turn minimizes CO² emissions and the greenhouse effect (source: IBO product test). fibreC consists of purely mineral raw materials and is therefore completely recyclable.

Rieder pursues a holistic approach that covers the entire range of sustainability and meets the high demands of ambitious modern architecture. Many projects built and evaluated in accordance with the international LEED® System (Leadership in Energy & Environmental Design) have been awarded their LEED certificate to a substantial extent thanks to their sustainable fibreC facade. Rieder is committed to making an active contribution to the energy turnaround through continuous research and further development of its products and production processes.

[Nachhaltig]

In Bezug auf Nachhaltigkeit ist Beton ein wesentlicher Gestalter der Zukunft. Der Baustoff steht für Dauerhaftigkeit und damit Wertbeständigkeit. Diesen ökologischen Grundgedanken verfolgt Rieder auch bei der Fertigung von fibreC. Im Gegensatz zu anderen Fassadenmaterialien wie Faserzement, Aluminium oder HPL wird bei der Produktion von fibreC nur wenig Primärenergie verbraucht, was sich wiederum auf eine niedrigere CO² Belastung und einen minimalen Treibhauseffekt auswirkt (Quelle: IBO Produktprüfung). Da fibreC auf mineralischen Grundmaterialien basiert, ist der Werkstoff vollständig recyclebar.

Rieders holistischer Ansatz beleuchtet das gesamte Spektrum der Nachhaltigkeit unter der Prämisse der anspruchsvollen Architektur. Viele Projekte, die nach dem internationalen LEED® System (Leadership in Energy and Environmental Design) bewertet wurden, verdanken ihre Auszeichnung unter anderem der nachhaltigen fibreC Fassade. Rieder vereint Funktionalität, Ästhetik und Intelligenz an der Fassade und will durch kontinuierliche Forschung und Weiterentwicklung der Produkte und Produktionsprozesse einen aktiven Beitrag zur Energiewende leisten.

[THE BEST WAY TO PREDICT
YOUR FUTURE IS TO CREATE IT] Abraham Lincoln



MIPIM
Award Cannes
&
LEED Platinum
Project

Main Point Karlin Prague, CZ | DaM Architects Prague, CZ | 6,800 m² fibreC facade | various colours | FE | undercut anchors
Main Point Karlin Prag, CZ | DaM Architekten Prag, CZ | 6,800 m² fibreC Fassade | diverse Farben | FE | Hinterechttanker

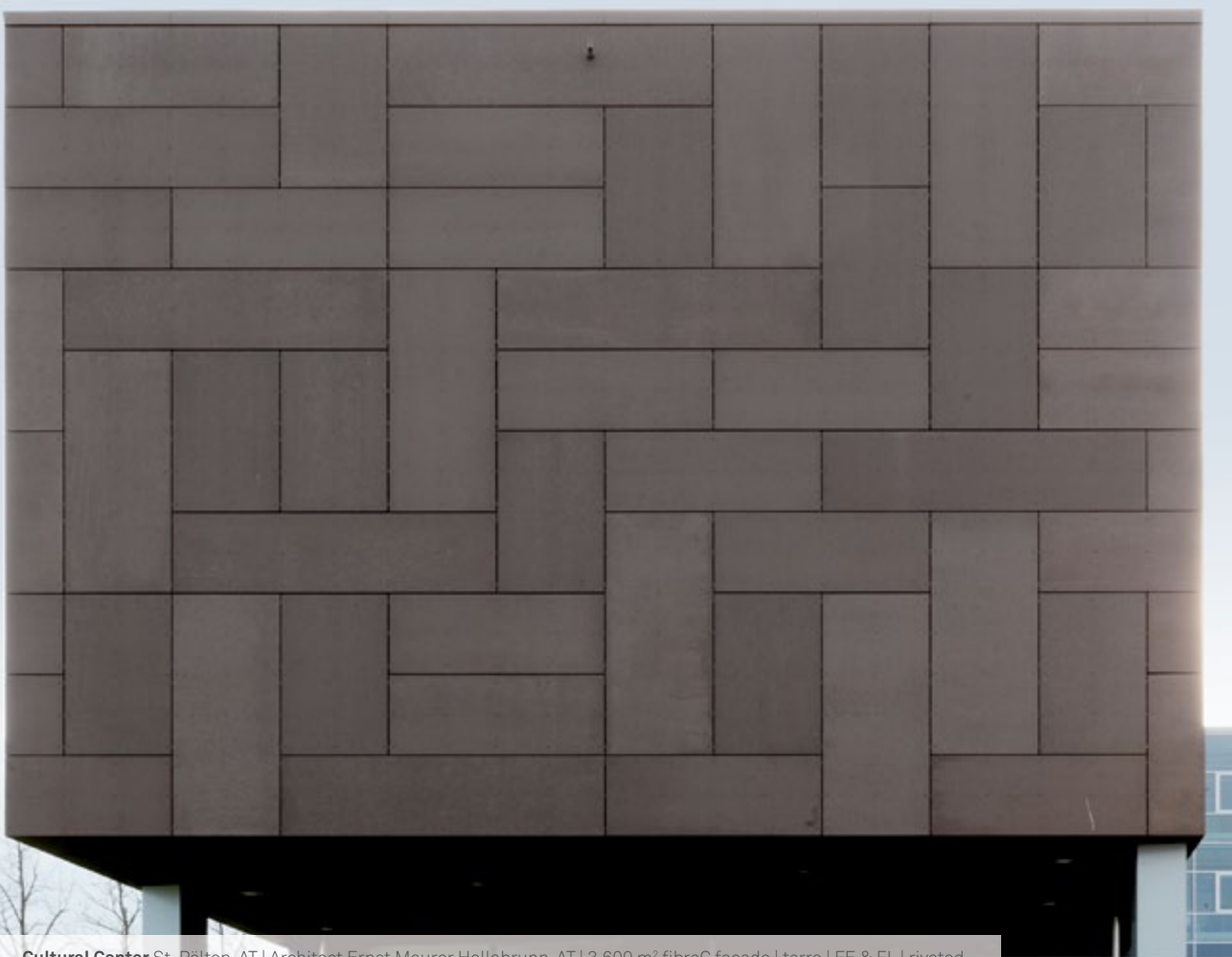




Bavaria Office Hamburg, DE | Axthelm Architects Potsdam, DE | 1,900 m² fibreC facade | ivory | MA | undercut anchors
Bavaria Office Hamburg, DE | Axthelm Architekten Potsdam, DE | 1.900 m² fibreC Fassade | elfenbein | MA | Hinterschnittanker
Coffee Plaza Hamburg, DE | Richard Meier & Partners Architects LLP New York City, US | 850 m² fibreC facade | anthracite | FE | undercut anchors
Coffee Plaza Hamburg, DE | Richard Meier & Partners Architects LLP New York City, US | 850 m² fibreC Fassade | anthrazit | FE | Hinterschnittanker



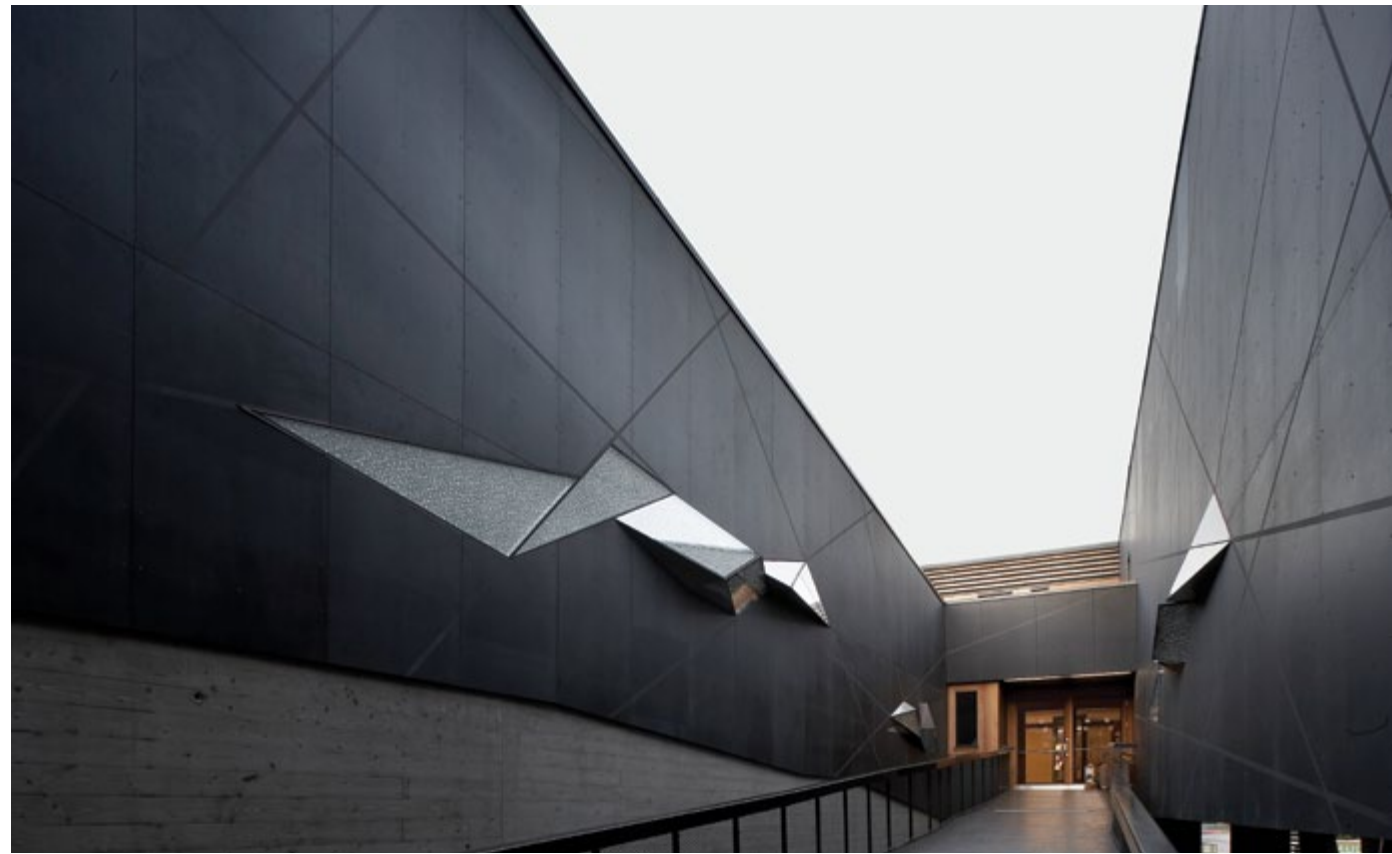
Villa D. Bischofshofen, AT | Architect Matthias Viehhauser Salzburg, AT | 700 m² fibreC facade | terra | FL | adhesive
Haus D. Bischofshofen, AT | Architekt Matthias Viehhauser Salzburg, AT | 700 m² fibreC Fassade | terra | FL | geklebt



Cultural Center St. Pölten, AT | Architect Ernst Maurer Hollabrunn, AT | 3,600 m² fibreC facade | terra | FE & FL | riveted
Kulturdepot St. Pölten, AT | Architekt Ernst Maurer Hollabrunn, AT | 3.600 m² fibreC Fassade | terra | FE & FL | genietet



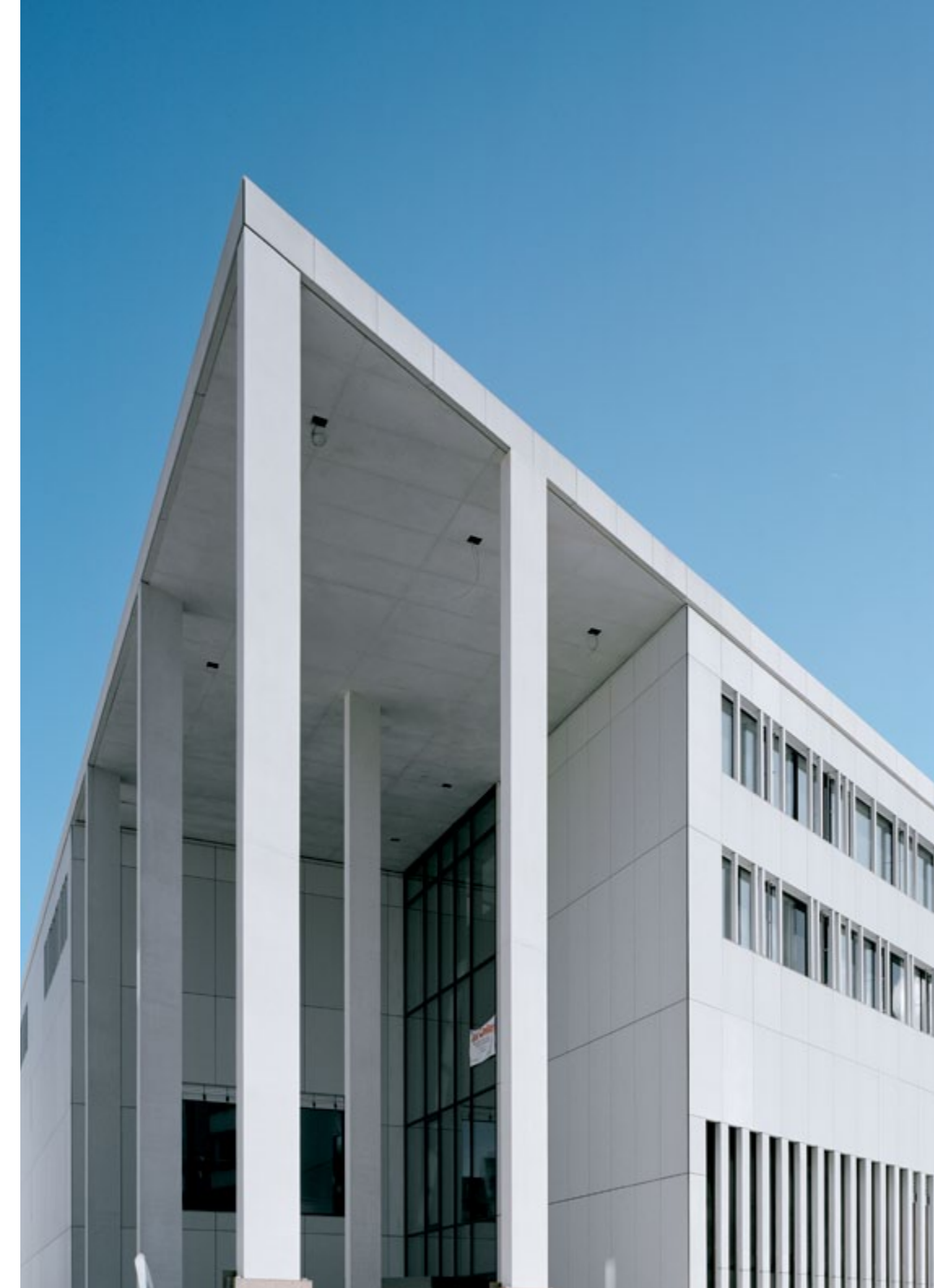
P.A.N. University Warsaw, PL | Kontrapunkt V Projekt Krakow, PL | 2,100 m² fibreC facade | silvergrey | FE & MA | riveted
P.A.N. Uniwersytät Warszawa, PL | Kontrapunkt V Projekt Krakau, PL | 2.100 m² fibreC Fassade | silbergrau | FE & MA | genietet



National Park Center Mittersill, AT | Forsthuber & Scheithauer Architects Salzburg, AT | 500 m² fibreC facade | anthracite | MA | screwed
Nationalparkzentrum Mittersill, AT | Forsthuber & Scheithauer Architekten Salzburg, AT | 500 m² fibreC Fassade | anthrazit | MA | geschraubt



Sports Shop Mitterer, Leogang, AT | W2 Manufaktur GmbH, Leogang, AT | 600 m² fibreC facade | terra | FE | riveted
Sportshop Mitterer, Leogang, AT | W2 Manufaktur GmbH, Leogang, AT | 600 m² fibreC Fassade | terra | FE | genietet



Villa R. Maishofen, AT | Dietrich Untertrifaller Bregenz, AT | 500 m² fibreC interior wall | ivory | MA | adhesive
Haus R. Maishofen, AT | Dietrich Untertrifaller Bregenz, AT | 500 m² fibreC Innenwand | elfenbein | MA | geklebt
Justice de Paix Esch/Alzette, LU | Architect Jim Clemes sa, LU | 3,500 m² fibreC facade | polar white | FE | undercut anchors
Friedensgericht Esch/Alzette, LU | Architekt Jim Clemes sa, LU | 3.500 m² fibreC Fassade | polar white | FE | Hinterschnittanker



Storefront for Art and Architecture New York City, US | Architects Steven Holl & Vito Acconci New York City, US | 100 m² fibreC facade | silbergrey | MA | geschraubt
Storefront for Art and Architecture New York City, US | Architekten Steven Holl & Vito Acconci New York City, US | 100 m² fibreC Fassade | silbergrau | MA | geschraubt

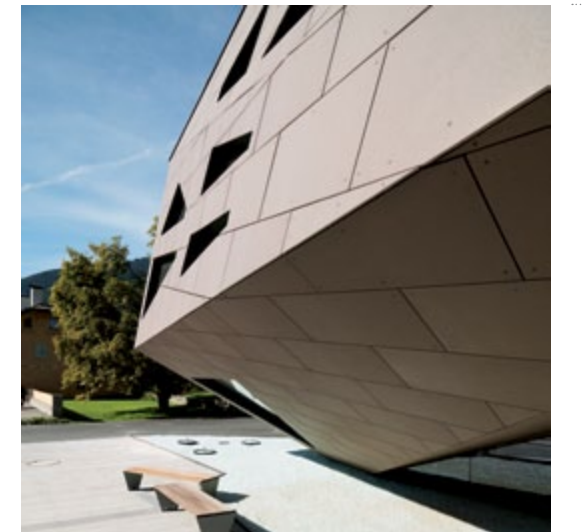


Miramar College San Diego, US | Carrier Johnson Architecture San Diego, US | 900 m² fibreC facade | terracotta | MA | screwed
 Miramar College San Diego, US | Carrier Johnson Architektur San Diego, US | 900 m² fibreC Fassade | terracotta | MA | geschraubt



Community Center Abfaltersbach, AT | Machné Architects Innsbruck, AT | 1,000 m² fibreC facade | ivory, silvergrey & mocca brown | FE | screwed

Gemeindezentrum Abfaltersbach, AT | Machné Architekten Innsbruck, AT | 1.000 m² fibreC Fassade | elfenbein, silbergrau & mocca braun | FE | geschraubt



[Individual]

Hardly any material has changed more in the public's perception in recent years than concrete, which was called „marble of our time“ by Le Corbusier: from the grey material of past monotonous construction to a popular material for architects and designers who strive for a pure aestheticism that appeals to the senses.

fibrec glassfibre-reinforced concrete speaks many languages. Facades with a stunning and lively play of colours are achieved by using the same colour in different textures. Special colours, perforations, individual forms and three-dimensional elements offer planners ample scope for creativity. Depending on the architect's preferences, fibrec facades can remain discretely in the background or add additional strength and contour to a building.

[Individuell]

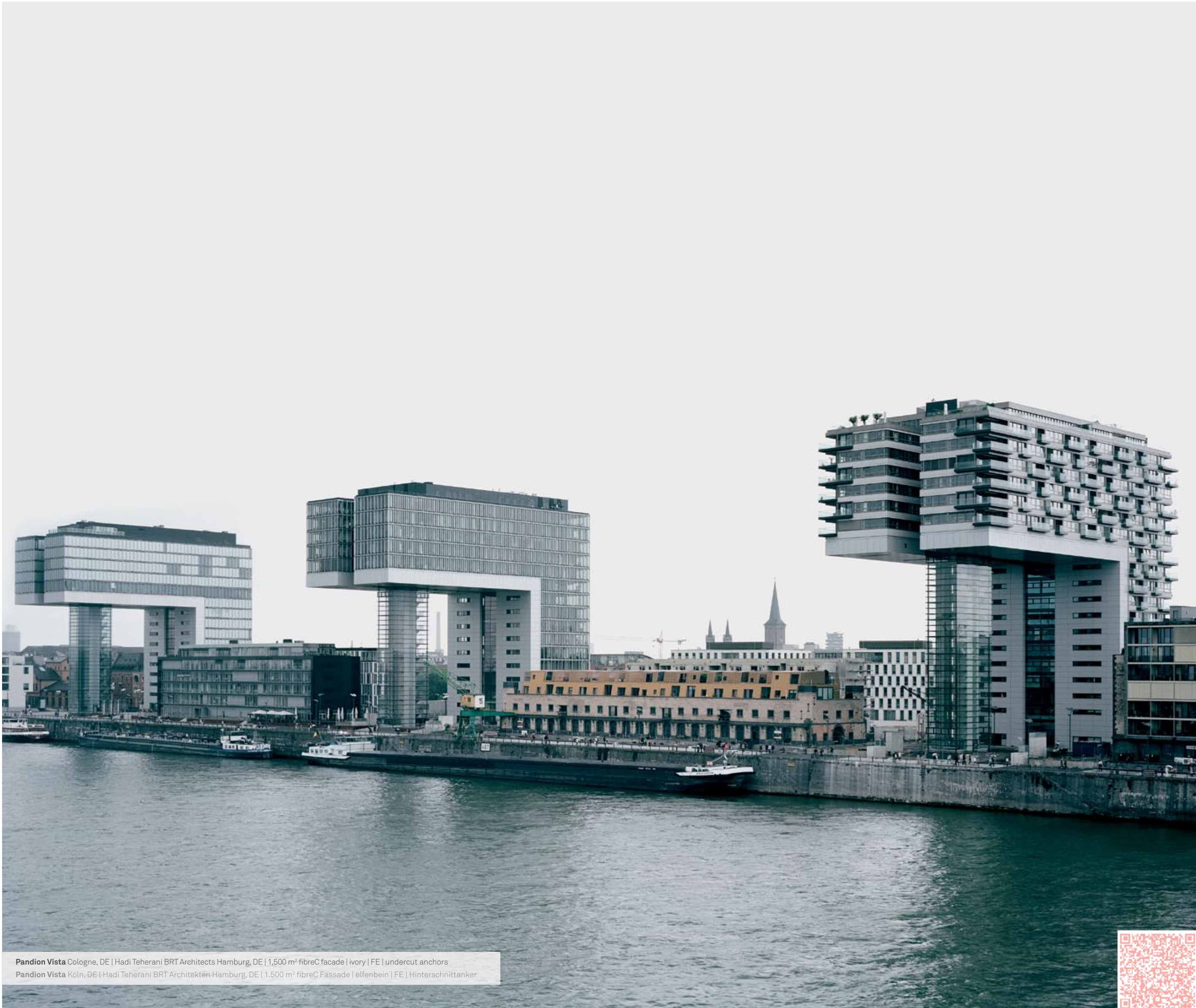
Kaum ein Material hat sich in der Wahrnehmung der Menschen in den letzten Jahren mehr gewandelt als der von Le Corbusier als „Marmor der Moderne“ bezeichnete Baustoff Beton: Vom grauen Material der monotonen Bausünden vergangener Jahre hin zum sinnlichen Material für Architekten und Planer auf der Suche nach purer Ästhetik.

fibrec Glasfaserbeton hat viele Sprachen. Die Kombination derselben Farbe in unterschiedlicher Textur verleiht der Fassade ein spannendes und lebendiges Farbspiel. Sonderfarben, Perforierungen, individuelle Formen und dreidimensionale Elemente bieten ein weites Feld für die Kreativität der Planer. Je nach Wunsch bleibt die fibrec Fassade dezent im Hintergrund oder verleiht der Architektur zusätzlich Stärke und Kontur.

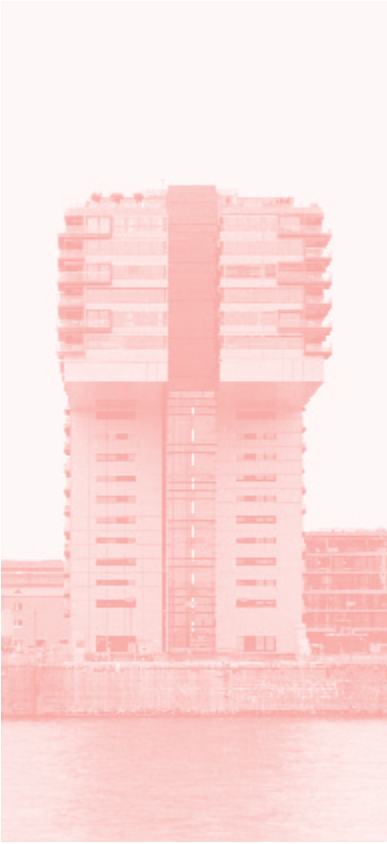
[EVERYTHING BEGINS WITH AN IDEA] Earl Nightingale

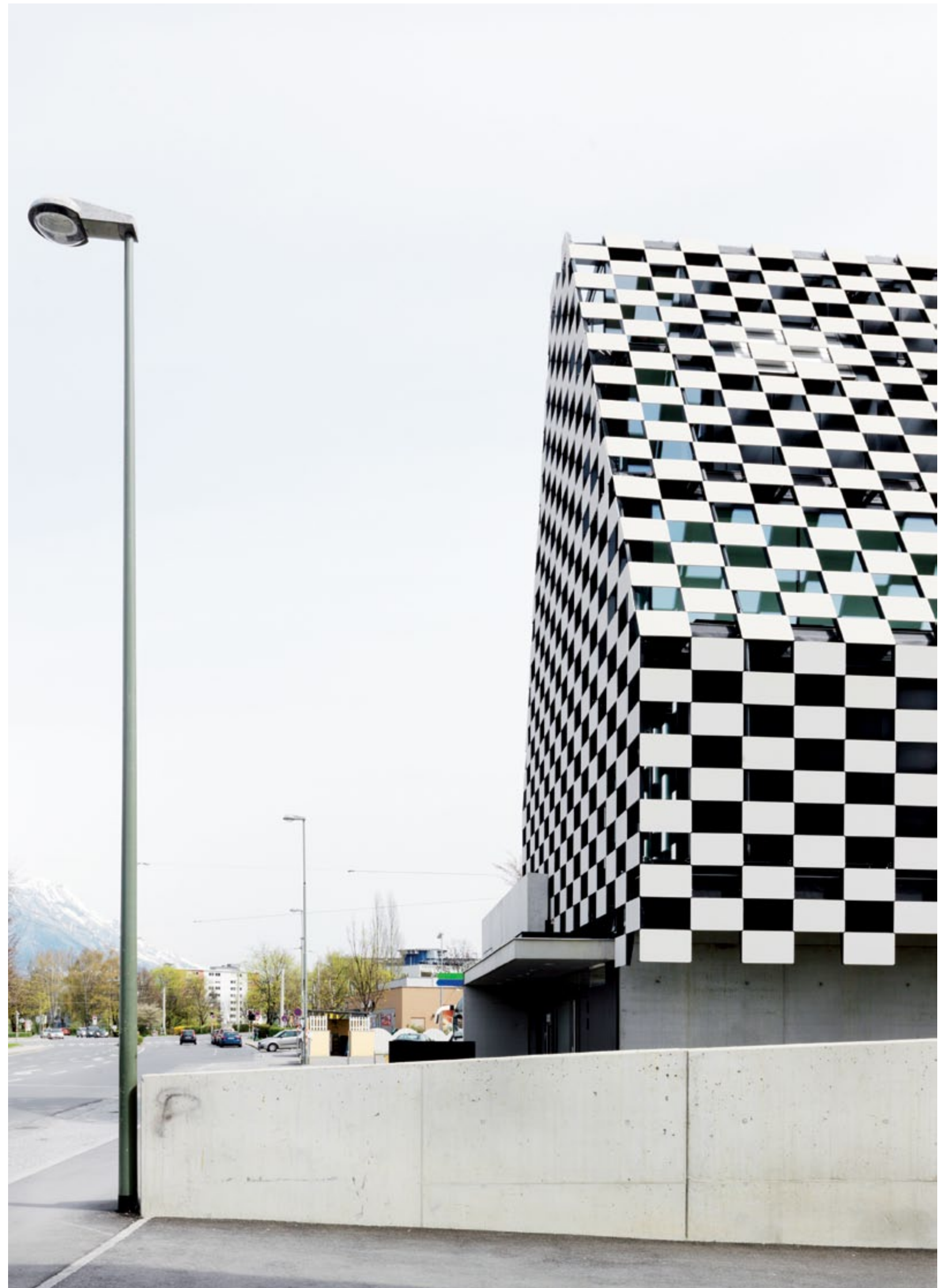


Park & Ride Aderklaa Vienna, AT | AW Architects Vienna, AT | 1,800 m² fibreC facade | ivory, sandstone & anthracite | FE, FL & MA | riveted
Park & Ride Aderklaa Wien, AT | AW Architekten Wien, AT | 1.800m² fibreC Fassade | elfenbein, sandstein & anthrazit | FE, FL & MA | genietet



Pandion Vista Cologne, DE | Hadi Teherani BRT Architects Hamburg, DE | 1,500 m² fibreC facade | ivory | FE | undercut anchors
Pandion Vista Köln, DE | Hadi Teherani BRT Architekten Hamburg, DE | 1.500 m² fibreC Fassade | elfenbein | FE | Hinterschnittanker

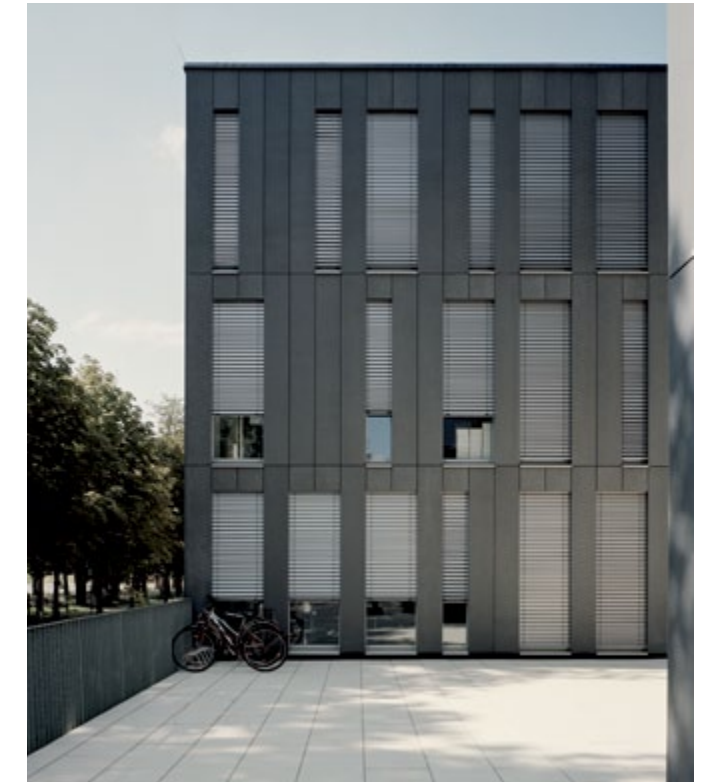




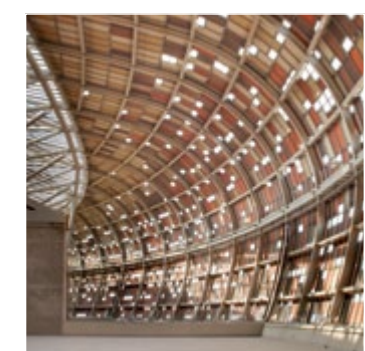
Bank BTV Mitterweg Innsbruck, AT | Architect Rainer Köberl Innsbruck, AT | 350 m² fibreC facade | ivory | FE | special fastening
Bank BTV Mitterweg Innsbruck, AT | Architekt Rainer Köberl Innsbruck, AT | 350 m² fibreC Fassade | elfenbein | FE | Spezialbefestigung



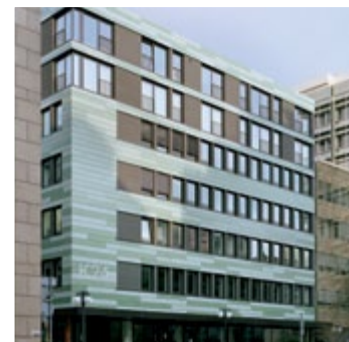
University of New Mexico Albuquerque, US | RMKM Architects Albuquerque, US | 5,850 m² fibreC facade | terracotta | FE, FL & MA | screwed
 University of New Mexico Albuquerque, US | RMKM Architekten Albuquerque, US | 5,850 m² fibreCFassade | terracotta | FE, FL & MA | geschraubt



Office Building Salzburg, AT | Schuster Architects Salzburg, AT | 1,100 m² fibreC facade | anthracite | FE | adhesive
 Bürogebäude Salzburg, AT | Schuster Architekten Salzburg, AT | 1,100 m² fibreCFassade | anthrazit | FE | geklebt



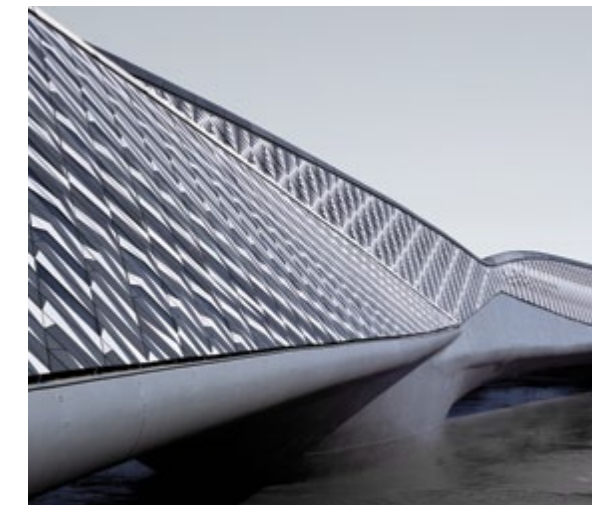
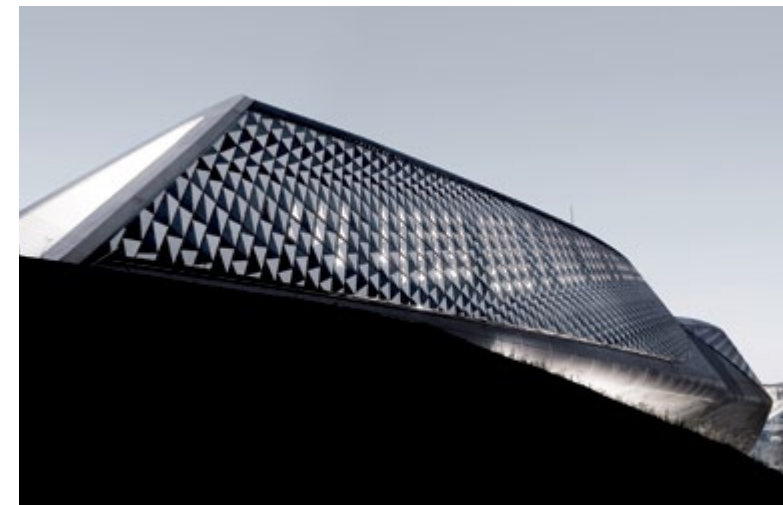
Soccer City Stadium for FIFA Worldcup 2010 Johannesburg, ZA | Boogertman Urban Edge & Partners, ZA | 30.000 m² fibreC facade | African colours | FE, FL & MA | riveted
Soccer City Stadion für den FIFA Worldcup 2010 Johannesburg, ZA | Boogertman Urban Edge & Partners, ZA | 30.000 m² fibreC Fassade | afrikanische Farben | FE, FL & MA | genietet



Office Building K24 Stuttgart, DE | Willwersch Architects Stuttgart, DE | 450 m² fibreC facade | green | FE & MA | riveted
 Bürogebäude K24 Stuttgart, DE | Willwersch Architekten Stuttgart, DE | 450 m² fibreC Fassade | grün | FE & MA | genietet



Printing Plant Schwarzach, AT | Huber Planungsgesellschaft Dornbirn, AT | 950 m² fibreC facade | anthracite | FL | riveted
 Offsetdruckerei Schwarzach, AT | Huber Planungsgesellschaft Dornbirn, AT | 950 m² fibreC Fassade | anthrazit | FL | genietet



Zaragoza Bridge Pavilion for EXPO 2008 Zaragoza, ES | Zaha Hadid Architects London, UK | 11,500 m² fibreC facade | grey shades | FE | riveted
Zaragoza Bridge Pavilion für die EXPO 2008 Saragossa, ES | Zaha Hadid Architekten London, UK | 11.500 m² fibreC Fassade | Grautöne | FE | genietet

[Safe]

For planners facade design is much more than an architectural task. Apart from aspects like aesthetics, efficiency and sustainability, they also have to take into account the safety of the materials and building systems. fibreC meets the requirements of fire protection class A1 „noncombustible“ and is environmentally neutral, as no additional treatment or chemical coatings are necessary for fire protection. The well-tried use of fibreC panels in professional bread and pizza ovens and the associated stringent tests and food certificates give the ecological material fibreC an excellent health certificate. fibreC has turned the low-tech material concrete of the past into a high-tech building material for the future. Innovations and developments in the field of concrete technology pave the way for a new, exciting future - towards intelligent facades.

[Sicher]

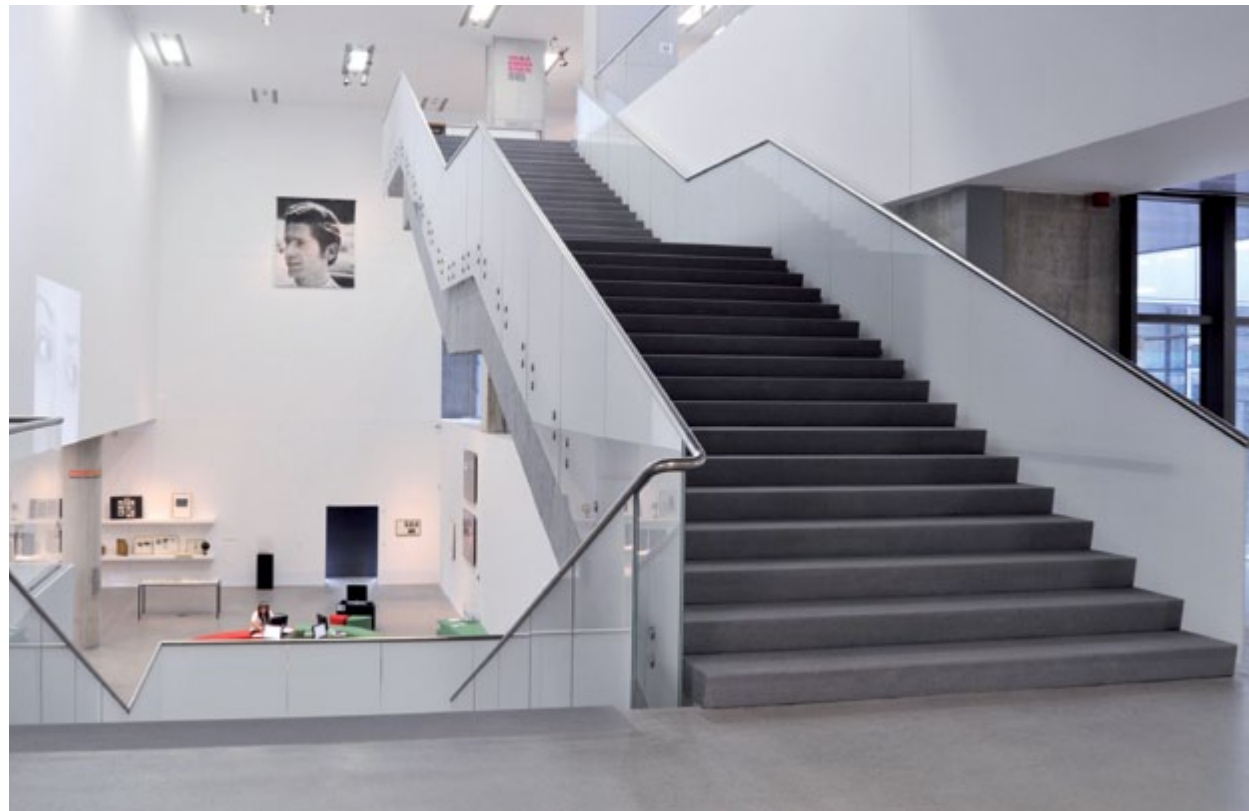
Für Planer ist die Fassadengestaltung wesentlich mehr als eine architektonische Entwurfsaufgabe. Neben Ästhetik, Wirtschaftlichkeit und Nachhaltigkeit spielt auch die Sicherheit der eingesetzten Materialien und Bausysteme eine große Rolle. Durch die Brandschutzklasse A1 „nicht brennbar“ ist der Einsatz von fibreC umweltneutral, da keine zusätzlichen Behandlungen und chemischen Beschichtungen zum Brandschutz benötigt werden. Die Verwendung von fibreC Platten in professionellen Brot- und Pizzaöfen und den damit verbundenen strengen Prüfungen und Lebensmittelzertifikaten stellen dem ökologischen Werkstoff fibreC ein Gesundheitszeugnis der besonderen Art aus. Aus dem Low-tech-Material Beton der Vergangenheit ist durch fibreC ein High-tech-Baustoff geworden. Beton-technologische Innovationen und Entwicklungen weisen den Weg in eine neue, spannende Zukunft - in Richtung intelligente Fassaden.

[QUALITY IS NEVER AN ACCIDENT,
IT IS ALWAYS THE RESULT OF HIGH
INTENTION]

William A. Foster



Buda-Cash Brokerhouse Budapest, HU | Architect Ekler Dezső Budapest, HU | 1,100 m² fibreC facade | terra | FE | undercut anchors
Buda-Cash Brokerhaus Budapest, HU | Architekt Ekler Dezső Budapest, HU | 1,100 m² fibreC Fassade | terra | FE | Hinterschnittanker



Museum of Contemporary Art Zagreb, HR | Architect Igor Franic Zagreb, HR | 2,000 m² fibreC interior wall and stairs | anthracite | FL & MA | adhesive
 Museum für Zeitgenössische Kunst Zagreb, HR | Architekt Igor Franic Zagreb, HR | 2.000 m² fibreC Innenwand und Treppen | anthrazit | FL & MA | geklebt

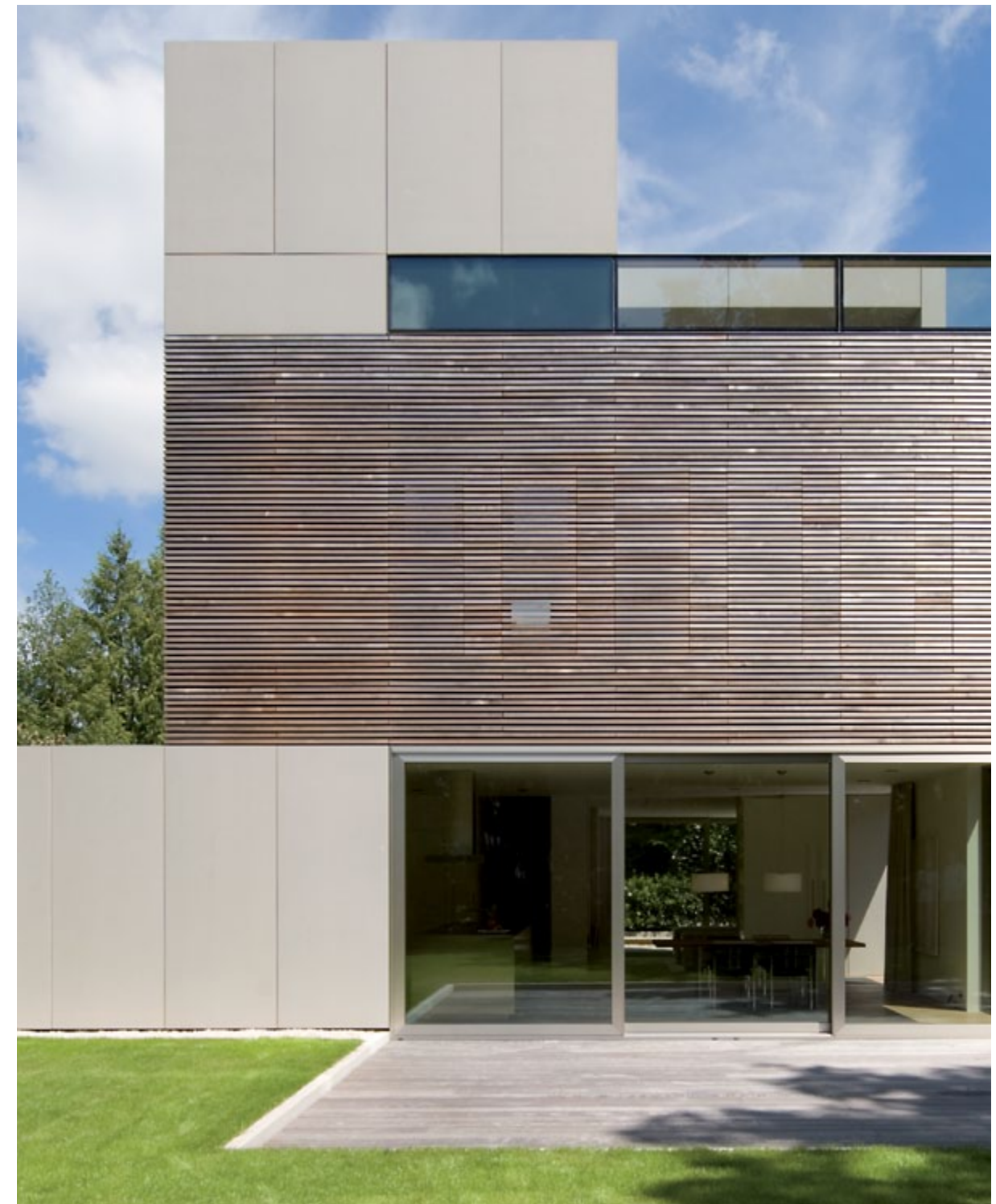
Fashion Shop Grand Rue Luxemburg, LU | Tatiana Fabeck Architecture Koerich, LU | 600 m² fibreC facade | sahara | FE | undercut anchors
 Fashion Shop Grand Rue Luxemburg, LU | Tatiana Fabeck Architektur Koerich, LU | 600 m² fibreC Fassade | sahara | FE | Hinterschnittanker





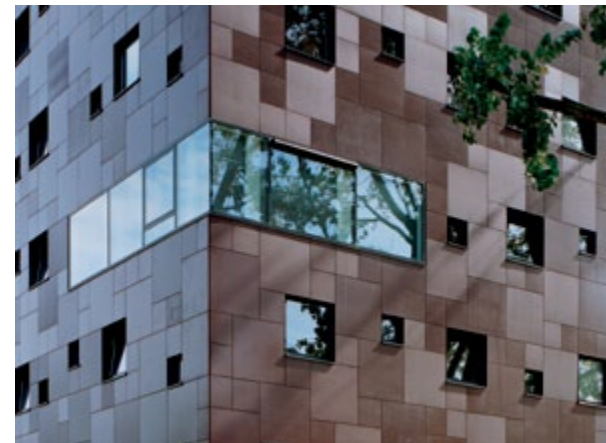
Primary School St. Walburg, IT | S.O.F.A. Architects Vienna, AT | 1,200 m² fibreC facade | silbergrey & anthracite | FE | riveted
Grundschule St. Walburg, IT | S.O.F.A. Architekten Wien, AT | 1,200 m² fibreC Fassade | silbergrau & anthrazit | FE | genietet

Villa K. Munich, DE | Lynx Architecture Munich, DE | 350 m² fibreC facade | ivory | FE | adhesive
Haus K. München, DE | Lynx Architecture München, DE | 350 m² fibreC Fassade | elfenbein | FE | geklebt





Hydropower Plant Dientenbach Lend, AT | 500 m² fibreC facade | bianco | FE | lap siding
 Wasserkraftwerk Dientenbach Lend, AT | 500 m² fibreC Fassade | bianco | FE | Stülp-schalung



Dormitory Blok 1 Presikhaaf Arnhem, NL | Group A Rotterdam, NL | 1.900 m² fibreC facade | terra | FE & FL & MA | screwed
 Studentenwohnheim Blok 1 Presikhaaf Arnhem, NL | Group A Rotterdam, NL | 1.900 m² fibreC Fassade | terra | FE & FL & MA | geschraubt



Radiotherapy Center Artur GIE Esch/Alzette, LU | Architect Jim Clemes sa Esch/Alzette, LU | 1,300 m² fibreC facade | bianco | MA | undercut anchors
Radiotherapiezentrum Artur GIE Esch/Alzette, LU | Architekt Jim Clemes sa Esch/Alzette, LU | 1.300 m² fibreC Fassade | bianco | MA | Hinterschnittanker





Centre Orchimont Howald, LU | Architect Ferdinand Krier Luxemburg, LU | 1.800 m² fibreC facade | anthracite & terracotta | FE & MA | undercut anchors
 Einkaufszentrum Orchimont Howald, LU | Architekt Ferdinand Krier Luxemburg, LU | 1.800 m² fibreC Fassade | anthrazit & terracotta | FE & MA | Hinterschnittanker



Railway Station Traisengasse Vienna, AT | Architect Albert Wimmer ZT Vienna, AT | 1.800 m² fibreC facade | liquide black | FL | riveted
 Bahnhof Traisengasse Wien, AT | Architekt Albert Wimmer ZT Wien, AT | 1.800 m² fibreC Fassade | liquide black | FL | genietet



Holzverkleidungen prägen weltweit viele Regionen sowohl in der traditionellen wie auch modernen Architektur. Leider bringen sie vor allem an exponierten Fassaden viel Wartungsaufwand mit sich und können ihre optischen Vorzüge oft nicht dauerhaft halten. Hier bietet Öko Skin von Rieder eine beliebte Alternative: die schmalen Paneele aus Glasfaserbeton müssen weder abgeschliffen noch gestrichen werden. Ein weiterer deutlicher Vorteil gegenüber Holz ist die Brandschutzklasse A1 - nicht brennbar. Mit Öko Skin von Rieder erobert Beton nun auch Regionen und Gebäudearten, die bisher Baustoffen wie Holz vorbehalten waren. Öko Skin – Schön wie Holz, nachhaltig wie Beton.

BOOKMARK

\ o with two dots \ ö is a character used in several Latin alphabets. It represents the unlauded form of o \ the pronunciation of ö is like “i” in “Sir” \ ö can be transcribed as “oe” \ ö is a typical character of Austria \ The ö of **Öko Skin** stands for **Österreich (Austria), ökologisch (ecological), ökonomisch (economical).**

In many regions wood is an important design element of both traditional and modern architecture. The main disadvantages of wood are its high maintenance requirements and the fact that it does not retain its attractive appearance in the long term, particularly if the facade is strongly weather-exposed. Rieder Öko Skin offers an ideal alternative: the slender glassfibre concrete panels neither have to be sanded nor painted. Another substantial advantage over wood is the fact that Öko Skin meets fire protection class A1 and is noncombustible. Öko Skin allows Rieder to capture regions and building types previously reserved to traditional building materials such as wood. Öko Skin – as beautiful as wood, as sustainable as concrete.



Atelier R. Maishofen, AT | 100 m² Öko Skin slat wall panels | terra | screwed
Atelier R. Maishofen, AT | 100 m² Öko Skin Betonlatten | terra | geschraubt





Apartments Dorfvilla Maishofen, AT | Architect Klaus Dick Maishofen, AT | 250 m² Öko Skin slat wall panels | silvergrey | screwed
Appartments Dorfvilla Maishofen, AT | Architekt Klaus Dick Maishofen, AT | 250 m² Öko Skin Betonlatten | silbergrau | geschraubt



Bernkogel Cableway Station Saalbach Hinterglemm, AT | Melzer and Hopfner Architects Bregenz, AT | 800 m² Öko Skin slat wall panels | terra | riveted
Bernkogel Bergstation Saalbach Hinterglemm, AT | Melzer und Hopfner Architekten Bregenz, AT | 800 m² Öko Skin Betonlatten | terra | genietet
Skiing Center Bürglalm Dienten, AT | Hasenauer Architects Saalfelden, AT | 650 m² Öko Skin slat wall panels | terra | screwed
Schizentrum Bürglalm Dienten, AT | Hasenauer Architekten Saalfelden, AT | 650 m² Öko Skin Betonlatten | terra | geschraubt



Office Building Glaskontor Gießen, DE | Gerhard Schymik Architects Gießen, DE | 360 m² Öko Skin slat wall panels | liquide black | riveted
Bürogebäude Glaskontor Gießen, DE | Gerhard Schymik Architekten Gießen, DE | 360 m² Öko Skin Betonlatten | liquide black | genietet



Villa M. St. Georgen, AT | 200 m² Öko Skin slat wall panels | silvergrey | screwed
Haus M. St. Georgen, AT | 200 m² Öko Skin Betonlatten | silbergrau | geschraubt

PROJECT	LOCATION	COUNTRY	PRODUCT	COLOUR	SURFACE	FASTENING	SIZE	BUILDING TYPE	PAGE
Apartments Dorfvilla	Maishofen	AT	Öko Skin	silvergrey	-	screwed	250 m³	Hotel	70
Atelier R.	Maishofen	AT	Öko Skin	terra	-	screwed	100 m²	Residential Building	68-69
Bank BTV Mitterweg	Innsbruck	AT	fibreC	ivory	FE	special fastening	350 m²	Commercial Premises	42-43
Bavaria Office	Hamburg	DE	fibreC	ivory	MA	undercut anchors	1,900 m²	Office Building	24
Bernkogel Cableway Station	Saalbach Hinterglemm	AT	Öko Skin	terra	-	riveted	800 m²	Public Building	71
Buda-Cash Brokerhouse	Budapest	HU	fibreC	terra	FE	undercut anchors	1,100 m²	Commercial Premises	54-55
Buddhist Center	Vienna	AT	fibreC	silvergrey & sandstone	FE	adhesive	800 m²	Public Building	8-9
Centre Orchimont	Howald	LU	fibreC	anthracite & terracotta	FE & MA	undercut anchors	1,800 m²	Commercial Premises	64
Coffee Plaza	Hamburg	DE	fibreC	anthracite	FE	undercut anchors	850 m²	Office Building	24
Community Center	Abfaltersbach	AT	fibreC	ivory, silvergrey & mocca brown	FE	screwed	1,000 m²	Public Building	35
Copernicus Science Center	Warsaw	PL	fibreC	various	MA	riveted	13,000 m²	Museum	12-13
Cultural Center	St. Pölten	AT	fibreC	terra	FE & FL	riveted	3,600 m²	Public Building	26
Domicilium	Linz	AT	fibreC	terra	MA	adhesive	1,200 m²	Residential Building	18
Dormitory Blok 1	Arnhem	NL	fibreC	terra	FE, FL & MA	screwed	1,900 m²	Residential Building	61
Fashion Shop Rue du Dragon	Paris	FR	fibreC	sandstone	FE	undercut anchors	110 m²	Commercial Premises	19
Fashion Shop Grand Rue	Luxemburg	LU	fibreC	sahara	FE	undercut anchors	600 m²	Commercial Premises	57
Hotel Sonne	Dornbirn	AT	fibreC	terra	FL	riveted & screwed	300 m²	Hotel	15
Hydropower Plant Dientenbach	Lend	AT	fibreC	bianco	FE	lap siding	500 m²	Industry	60
Hydropower Plant Neubruck	Scheibbs	AT	fibreC	anthracite	FL & MA	riveted	550 m²	Industry	10
Justice de Paix	Esch/Alzette	LU	fibreC	polar white	FE	undercut anchors	3,500 m²	Public Building	31
Main Point Karlin	Prague	CZ	fibreC	various	FE	undercut anchors	6,800 m²	Office Building	22-23
Miramar College	San Diego	US	fibreC	terracotta	MA	screwed	900 m²	Educational Institution	34
Museum of Contemporary Art	Zagreb	HR	fibreC	anthracite	FL & MA	adhesive	2,000 m²	Museum	56
National Park Center	Mittersill	AT	fibreC	anthracite	MA	screwed	500 m²	Museum	28
Office Building Glaskontor	Gießen	DE	Öko Skin	liquide black	-	riveted	360 m²	Office Building	72
Office Building K24	Stuttgart	DE	fibreC	green	FE & MA	riveted	450 m²	Office Building	48
Office Building	Salzburg	AT	fibreC	anthracite	FE	adhesive	1,100 m²	Office Building	45
Pandion Vista	Cologne	DE	fibreC	ivory	FE	undercut anchors	1,500 m²	Residential Building	40-41
P.A.N. University	Warsaw	PL	fibreC	silvergrey	FE & MA	riveted	2,100 m²	Educational Institution	27
Park & Ride Aderklaa	Vienna	AT	fibreC	ivory, sandstone & anthracite	FE, FL & MA	riveted	1,800 m²	Public Building	38-39
Primary School	St. Walburg	IT	fibreC	silvergrey & anthracite	FE	riveted	1,200 m²	Educational Institution	58
Printing Plant Schwarzach	Schwarzach	AT	fibreC	anthracite	FL	riveted	950 m²	Industry	49
Radiotherapy Center Artur GIE	Esch/Alzette	LU	fibreC	bianco	MA	undercut anchors	1,300 m²	Public Building	62-63
Railway Station Traisengasse	Vienna	AT	fibreC	liquide black	FL	riveted	1,800 m²	Public Building	65
Skiing Center Bürglalm	Dienten	AT	Öko Skin	terra	-	screwed	650 m²	Public Building	71
Soccer City Stadium	Johannesburg	ZA	fibreC	African colours	FE, FL & MA	riveted	30,000m²	Public Building	46-47
Sports Shop Mitterer	Leogang	AT	fibreC	terra	FE	riveted	600 m²	Commercial Premises	29
Storefront for Art and Architecture	New York City	US	fibreC	silvergrey	MA	screwed	100 m²	Museum	32-33
Swarovski Business Building	Wattens	AT	fibreC	anthracite	FE	undercut anchors	1,000 m²	Office Building	11
SWR Broadcasting Studio	Stuttgart	DE	fibreC	ivory, silvergrey, anthracite & special colours	FE & FL	riveted	5,500 m²	Office Building	16-17
TRIO Apartments	Warsaw	PL	fibreC	sandstone	MA	riveted	13,000 m²	Residential Building	14
University of New Mexico	Albuquerque	US	fibreC	terracotta	FE, FL & MA	screwed	5,850 m²	Public Building	44
Villa D.	Bischofshofen	AT	fibreC	terra	FL	adhesive	700 m²	Residential Building	25
Villa K.	Munich	DE	fibreC	ivory	FE	adhesive	350 m²	Residential Building	59
Villa M.	St. Georgen	AT	Öko Skin	silvergrey	-	screwed	200 m²	Residential Building	73
Villa R.	Maishofen	AT	fibreC	ivory	MA	adhesive	500 m²	Residential Building	30
Zaragoza Bridge Pavilion	Zaragoza	ES	fibreC	grey shades	FE	riveted	11,500 m²	Public Building	50-51