

News 2020

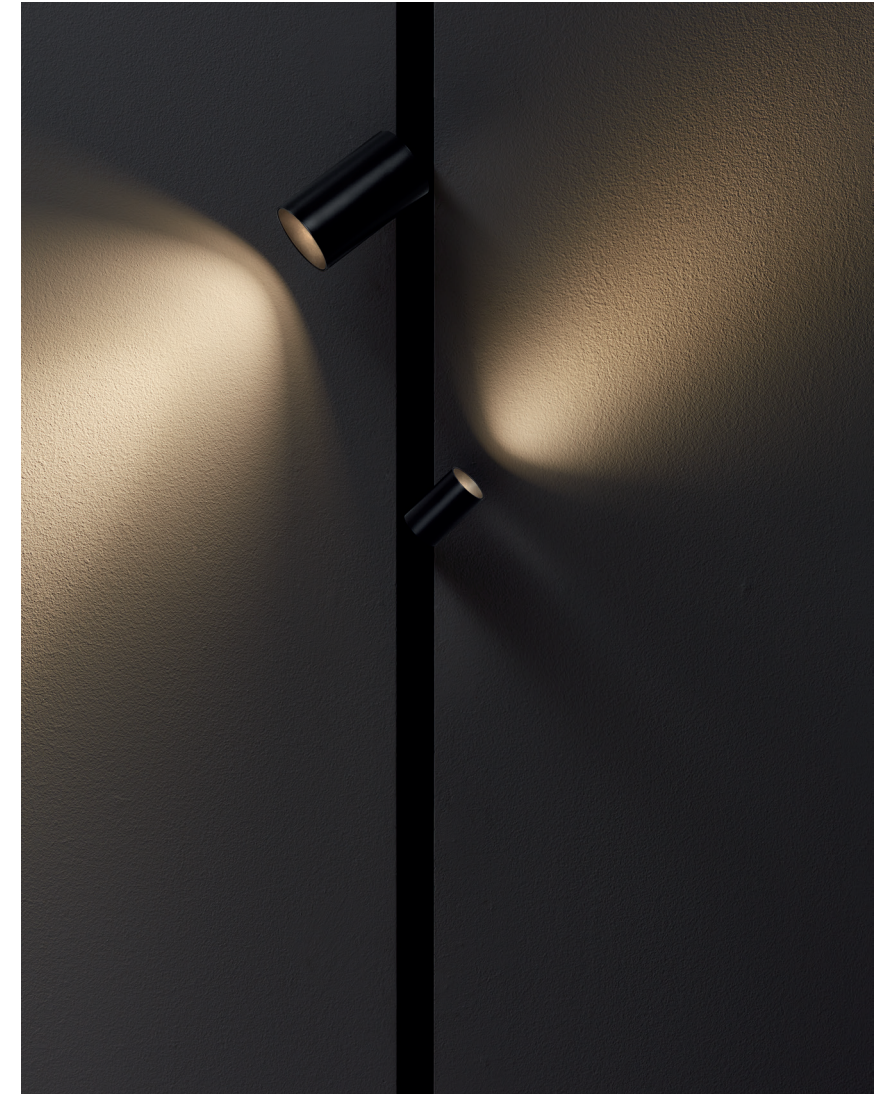
Technical



LEDS C4



Low voltage



Track 48 is a multi-use track system which combines a magnetic frame and low 48V track. This system can be installed vertically or horizontally along a wall or ceiling and then there is a choice of surface, recessed and suspended mounting options. Track 48 offers designers a greater flexibility in a lighting scheme as it can power lots of different types of luminaires such as spotlights, pendants and linear lights from one source. Coupled with the ability to adjust and move the light points at anytime which really suits multifunctional spaces such as restaurants.



Spotlights with a minimal and versatile design, which come in a wide range of finishes, allowing them to blend in with the space or to stand out on their own. This versatility makes them unique pieces, perfect for commercial, restaurant or hotel spaces.

The high-tech linear track Bento low voltage offers high visual confort and excellent optical control. It is intended for modern and contemporary spaces, where confort and integration are of paramount importance, such as offices, communal areas in hotels, conference rooms and exhibition venues.





Kiva low voltage, with its clean and ultra-compact design, fits perfectly into 48V rails. It has excellent optical control and comes in a DALI version. Decorative matte gold and satin nickel finishes.





Veneto, Vela and Punto low voltage are magnetic and adjustable pendant lights that fit into 48V rails.

Veneto reinterprets classic luxury with a luminaire in simple shapes and fine finishes and offers diffuse and delicate light that is warm and intimate.

Vela is a cylindrical and delicate pendant that integrates perfectly into the space, highlighting any element it focuses on.

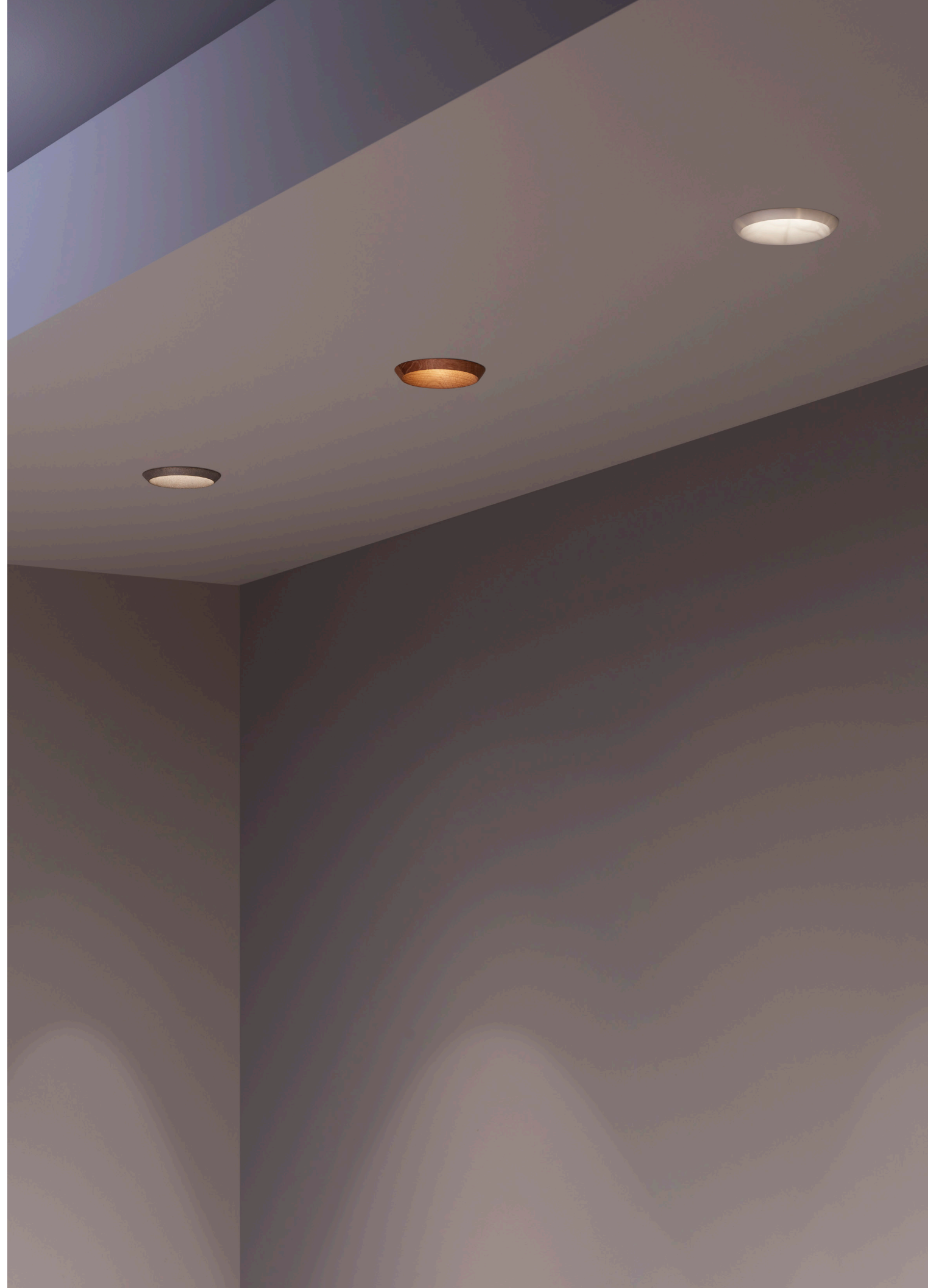
Punto is a spherical and minimalist pendant that places the entire emphasis on the use of light. A focused light, with a high chromatic reproduction and visual comfort.

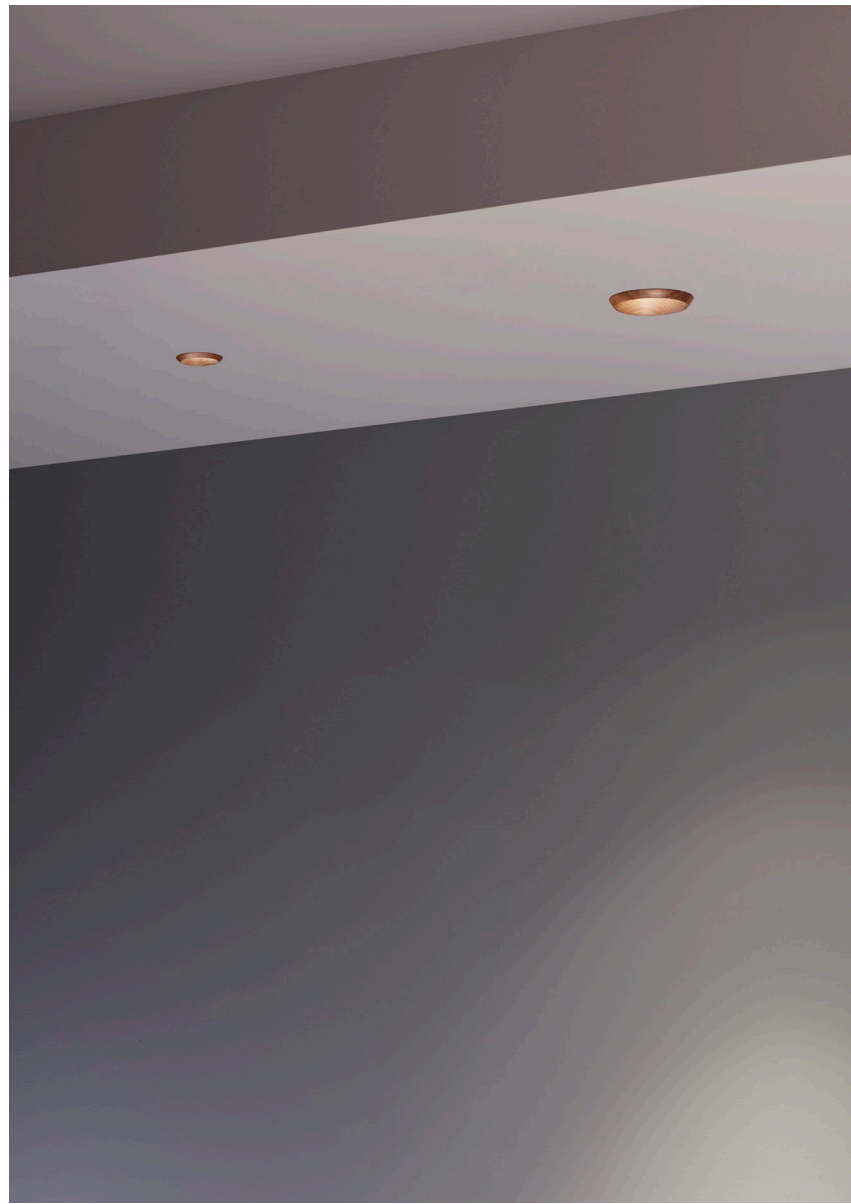


Play



The most flexible and functional product family on the market, with LED modules from 1 to 18W and 36 to 110 mm sized frames. All the efficacy, optical control and easy installation of the Play family, with countless decorative options to personalize the installation. The ideal point of balance between functionalism and aesthetics.





Solutions manufactured in fine materials, such as walnut and oak sourced from sustainable forests, so that architects, designers and interior decorators can integrate the materials used into both the ambience and the lighting.



Alabaster and concrete are pure architectural materials for spaces where every detail counts.



Play Snoot with a high-comfort, fully-adjustable frame.

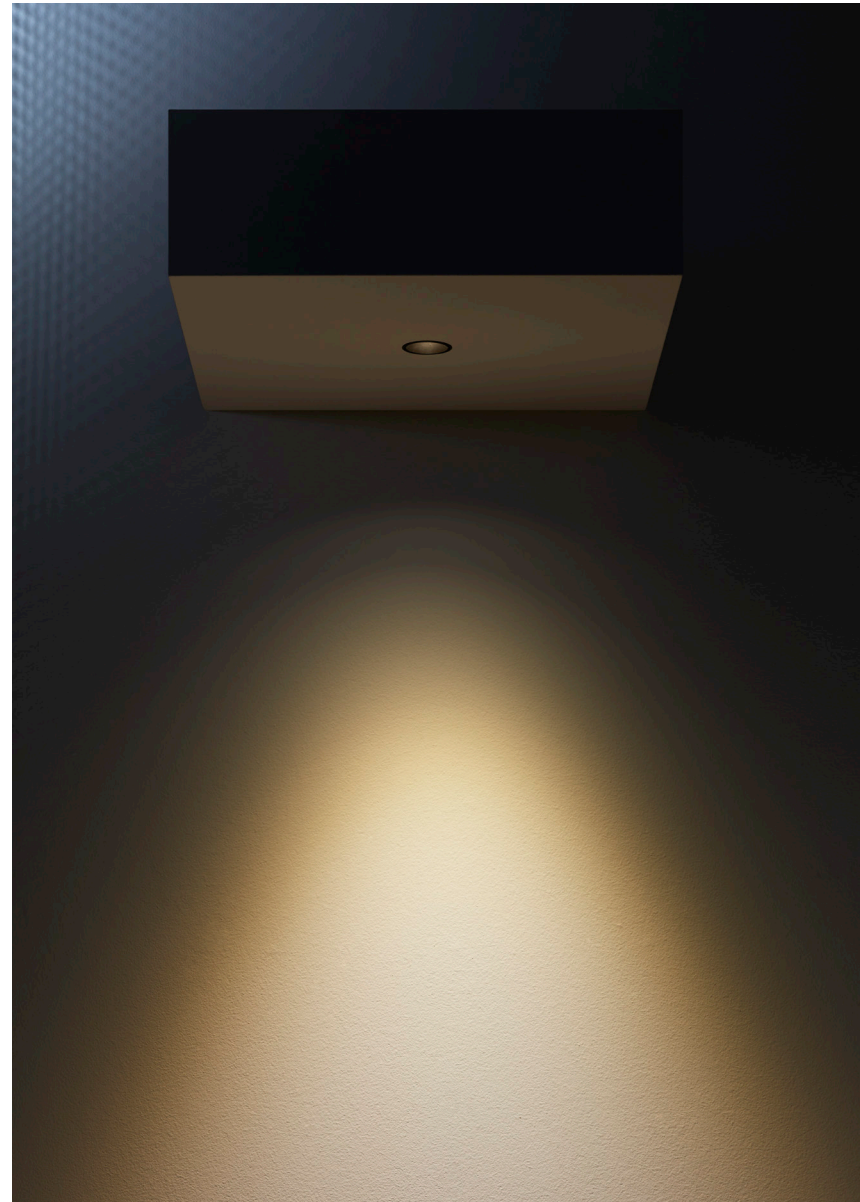


Play Soft with a smooth frame for greater integration into the ceiling.

Play High Visual Comfort offers a glare-free frame and superb visual comfort, thanks to a UGR of less than 13.



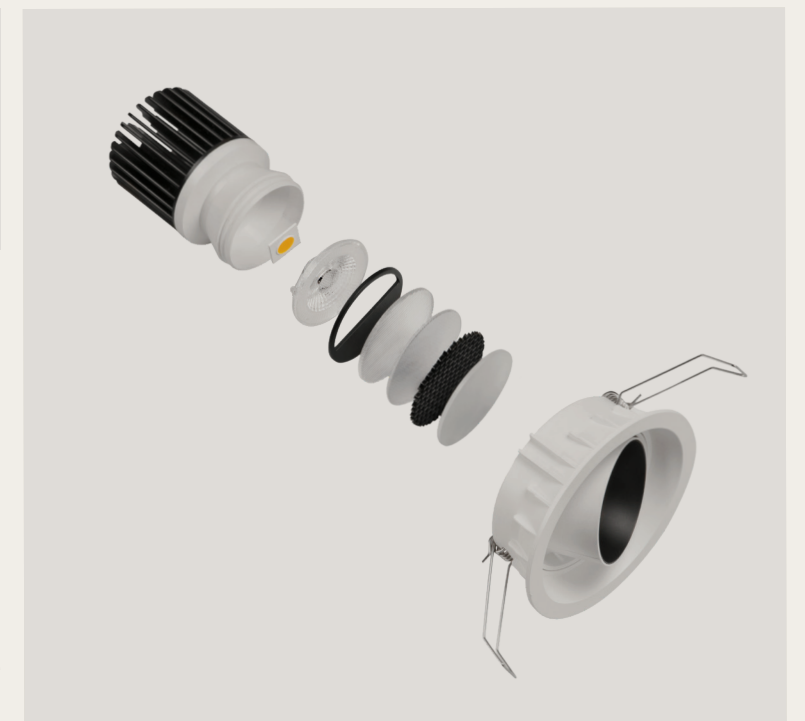
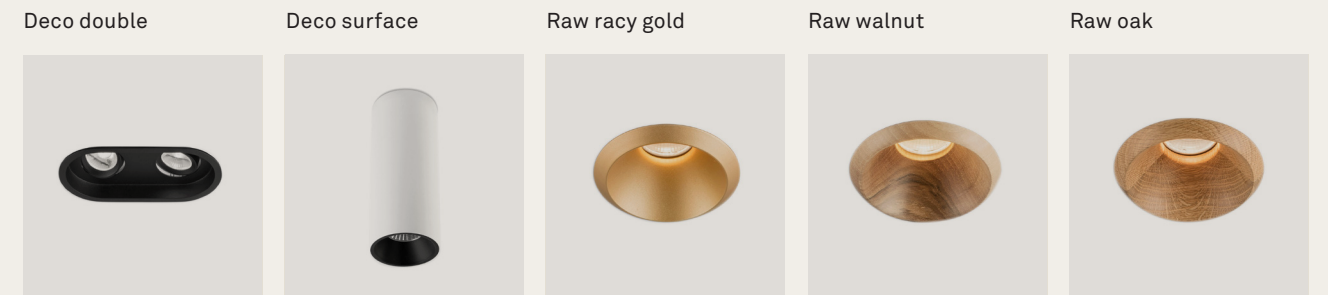
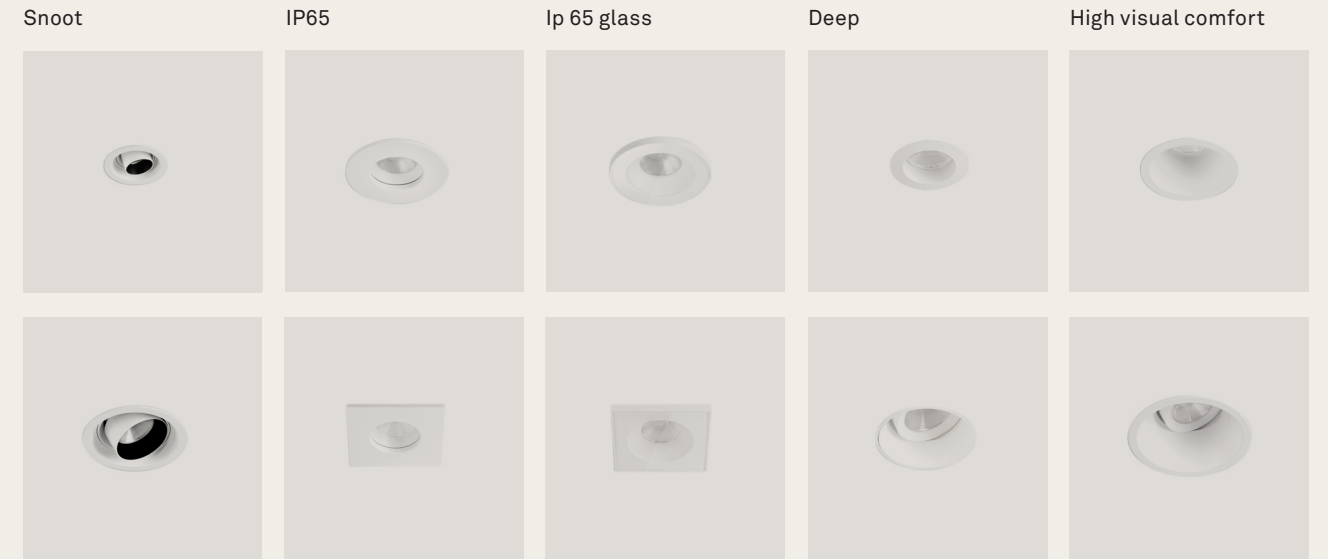
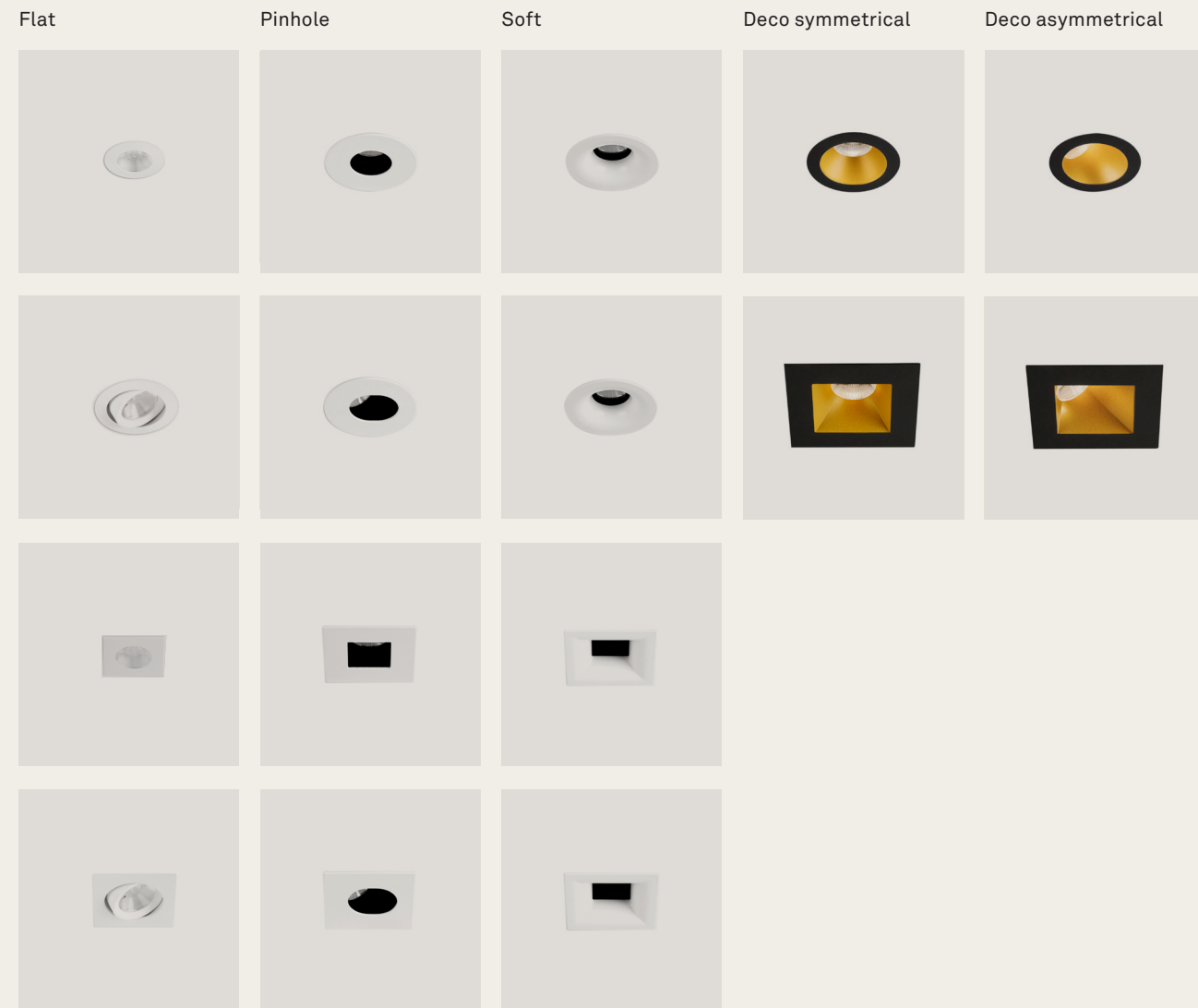




Play deco frames offers different installation types -embedded, surface or suspension-, structure -with or without support frame - and, finishes such as white, black, gold, satin or chrome. And IP56 and IP65 Glass frames are specific options for damp environments.



Play frames & Accesories

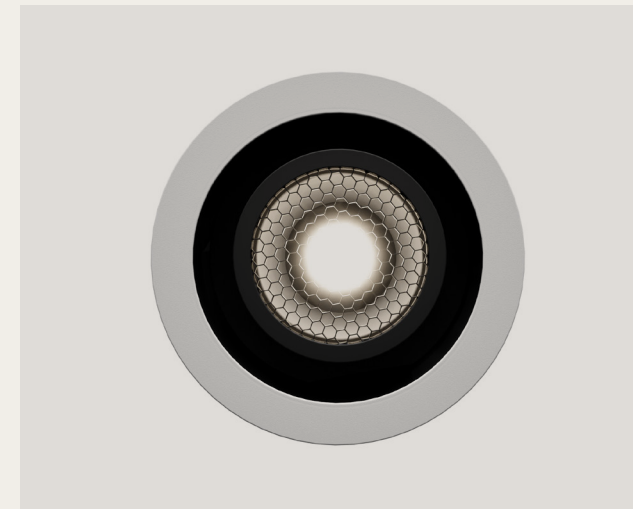


A wide range of lens options are available for better light control such as elliptical diffusers, square diffusers and honeycomb.
www.leds-c4.com/en/play



Biwa

Biwa, the result of the partnership between BMLD and LEDS C4, is a small compact downlight designed for accent lighting. It allows you to create dramatic effects and play with the light and dark of the scene, illuminating elements within a space. It projects a crisp, clean, spot-free halo and is highly adjustable in both tilt and rotation.



A wide range of accessories are available such as honeycomb, elliptical diffuser, square diffuser, warm filter and neutral filter.

